

BASIS OF ELEVATION: 4560.12' TOP OF 3" BRASS DISC USGS A142

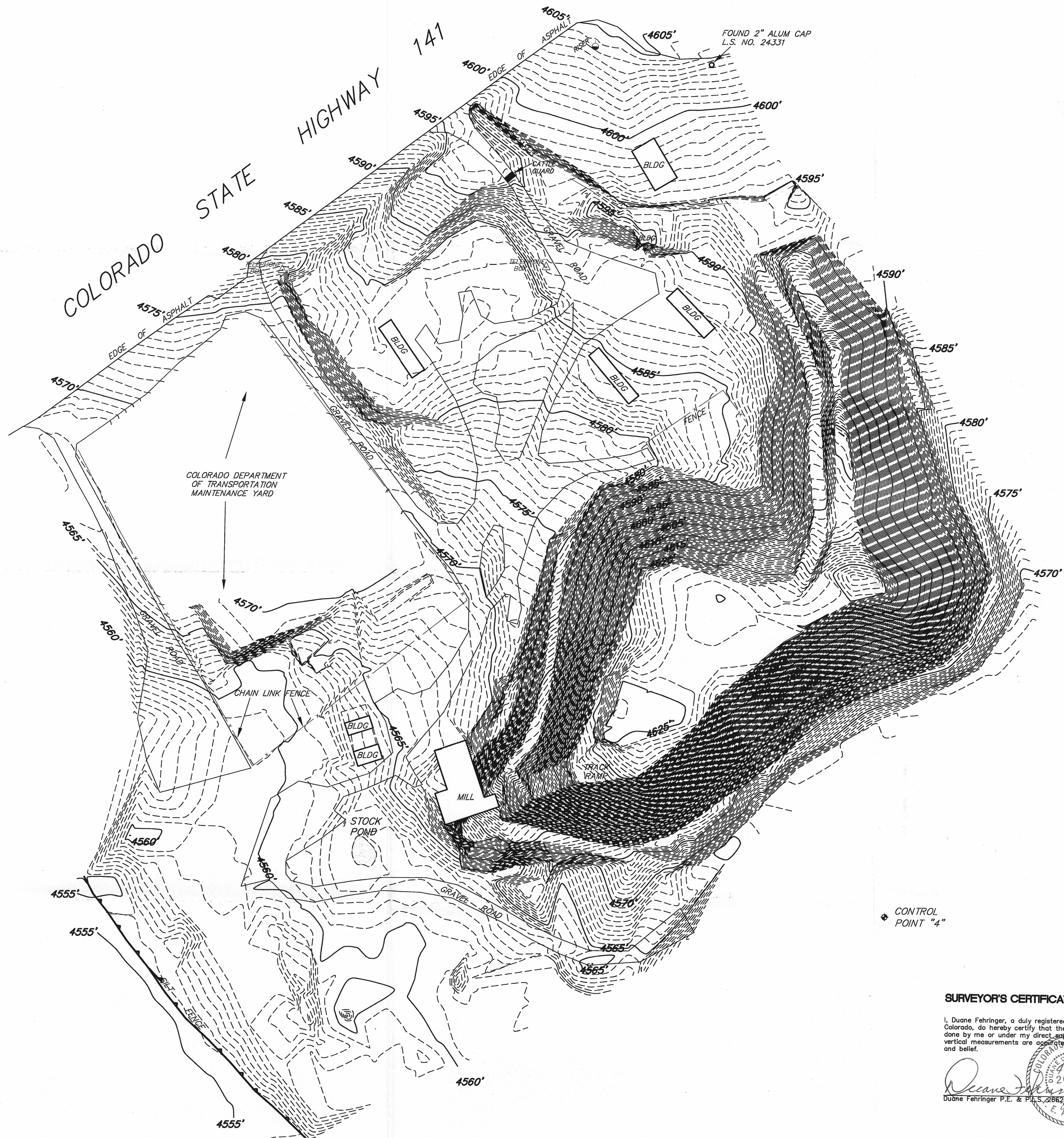
CONTROL POINT "2"

BENCHMARK - ELEV=4560.12'  
FOUND 3" BRASS DISC  
USGS A142

FOUND CDOT R/W MONUMENT

CONTROL POINT "1"

NOTICE: According to Colorado law you must commence any legal action based upon any defect in this survey within three years after you first discover such defect. In no event, may any action based upon any defect in this survey be commenced more than ten years from the date of certification shown hereon.



**SURVEYOR'S CERTIFICATE**

I, Duane Fehringer, a duly registered land surveyor in the State of Colorado, do hereby certify that the survey shown hereon was done by me or under my direct supervision, and the horizontal and vertical measurements are accurate to the best of my knowledge and belief.

*Duane Fehringer*  
Duane Fehringer P.E. & P.L.S. 288278  
COLORADO REGISTERED LAND SURVEYOR  
NO. 26626

NO.	DATE	REVISION	BY

**Inter-Mountain Engineering Ltd.**  
 892 CONTINENTAL AVENUE, SUITE 107, LITTLETON, CO 80120  
 303.949.5872  
 FAX: 303.949.5873  
 INTERMOUNTAINENGINEERING.COM

FRONTIER ENVIRONMENTAL  
 This document was prepared for the exclusive use of the client specified hereon. The use of this document or the information contained herein by any other person without the express written authorization of Inter-Mountain Engineering Ltd. is prohibited. In the event that any other person, firm or entity desires to use, copy, or modify this document for any purpose they must first obtain written authorization from Inter-Mountain Engineering Ltd. This authorization shall be in writing and shall be valid to the extent within one year of the date hereof. Use after that period is not authorized.

**TOPOGRAPHICAL MAP**  
 GATEWAY PROJECT  
 MESA COUNTY, COLORADO

DESIGNED BY:	---
DRAWN BY:	TV
CHECKED BY:	D.D.F.
DATE ISSUED:	4/19/06
PROJECT NO.	06-0021S
SHEET NO.	1 OF 1