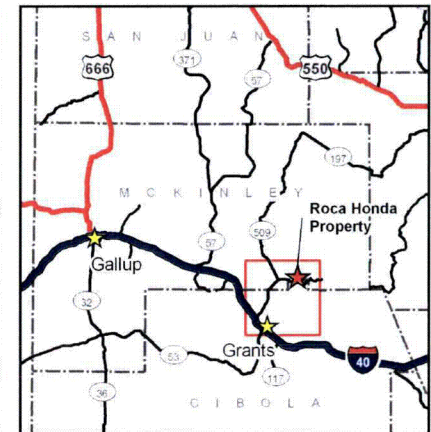
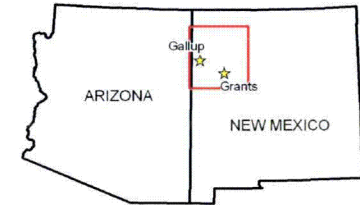


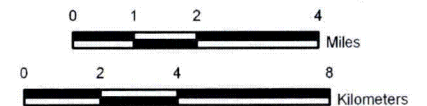
Strathmore Resources, Ltd. Roca Honda Project Access Map Sects. 9, 10, & 16

Location Maps



Red frame denotes area of detail at left

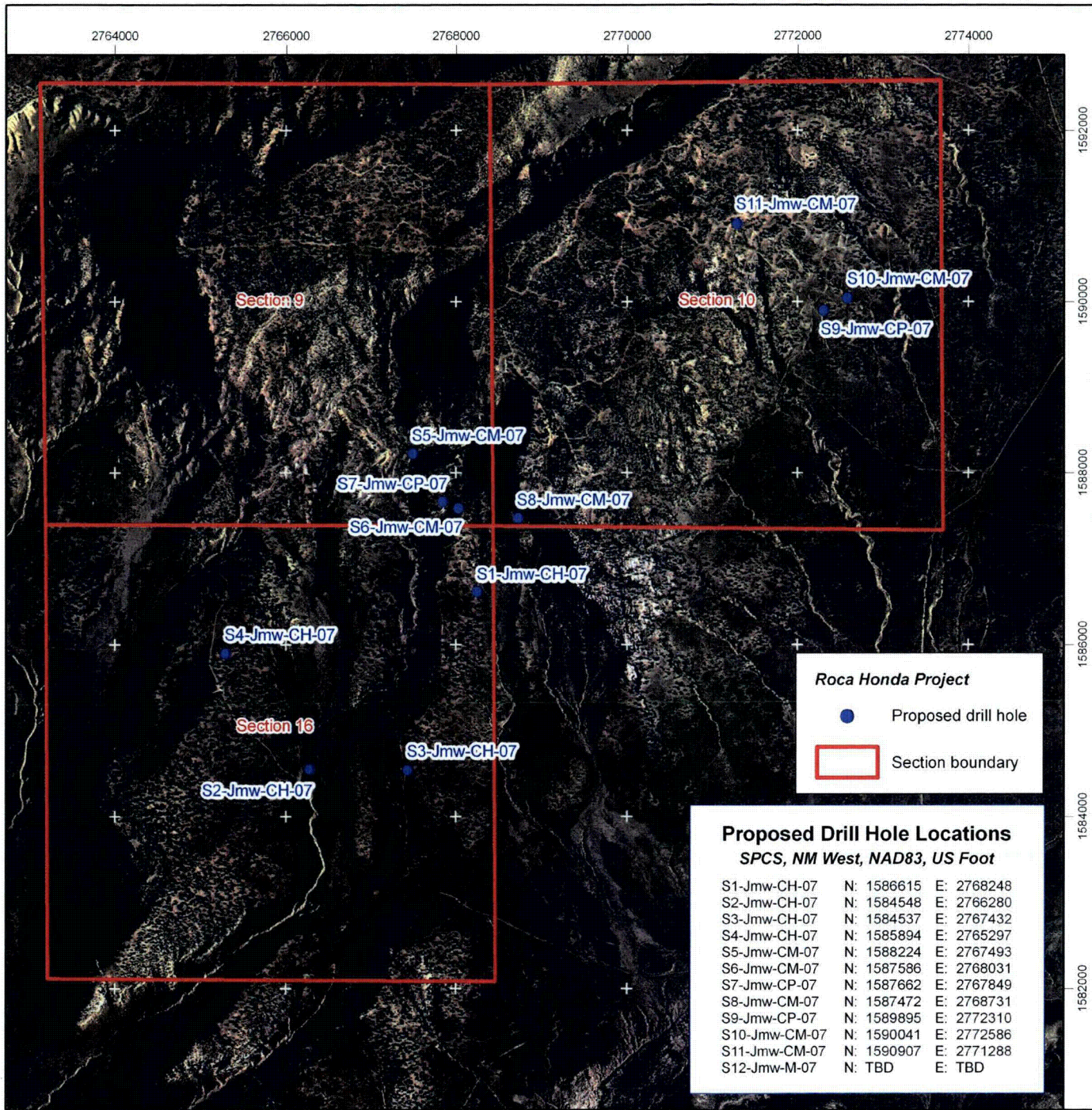
State Plane Coordinate System
New Mexico, Western Zone, US Foot
NAD83



STRATHMORE RESOURCES, US, Ltd.
Exploration and Development
Santa Fe, New Mexico

LOCATION/ACCESS MAP
ROCA HONDA PROJECT
SECTS. 9, 10, & 16, T 13 N - R 8 W
McKinley County, New Mexico, USA

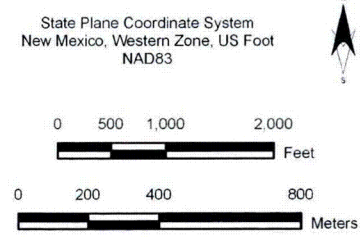
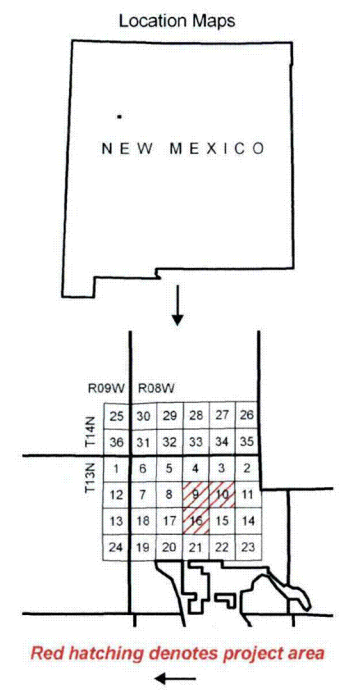
| | | | | | |
|----------|-----|-----------|-----------------------------------|--------|----------|
| Geology: | n/a | Drafting: | D.C. Green Apogen Technologies | Scale: | n/a |
| Notes: | | | | Date: | 04.20.07 |



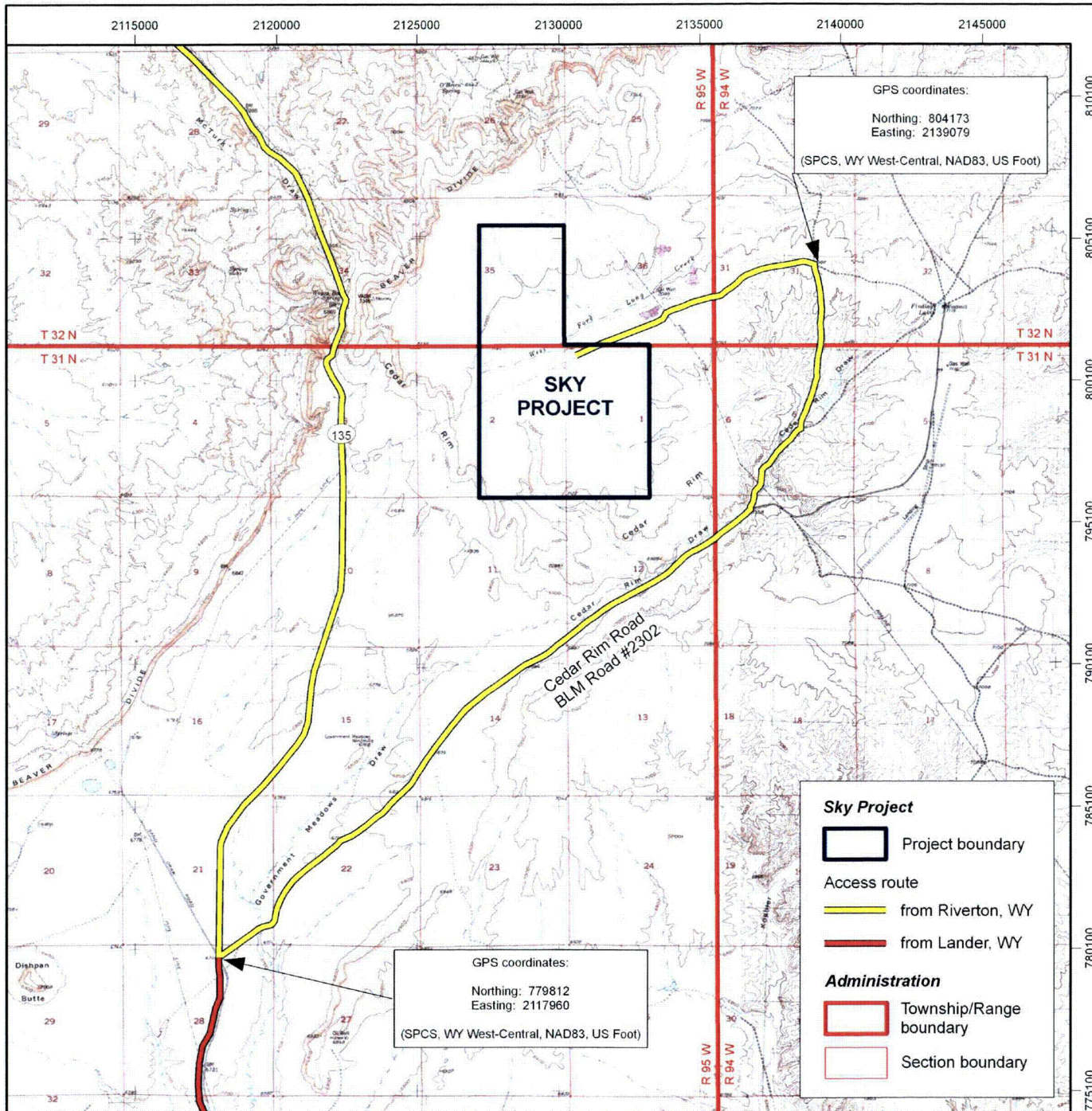
Proposed Drill Hole Locations
SPCS, NM West, NAD83, US Foot

| | | |
|---------------|------------|------------|
| S1-Jmw-CH-07 | N: 1586615 | E: 2768248 |
| S2-Jmw-CH-07 | N: 1584548 | E: 2766280 |
| S3-Jmw-CH-07 | N: 1584537 | E: 2767432 |
| S4-Jmw-CH-07 | N: 1585894 | E: 2765297 |
| S5-Jmw-CM-07 | N: 1588224 | E: 2767493 |
| S6-Jmw-CM-07 | N: 1587586 | E: 2768031 |
| S7-Jmw-CP-07 | N: 1587662 | E: 2767849 |
| S8-Jmw-CM-07 | N: 1587472 | E: 2768731 |
| S9-Jmw-CP-07 | N: 1589895 | E: 2772310 |
| S10-Jmw-CM-07 | N: 1590041 | E: 2772586 |
| S11-Jmw-CM-07 | N: 1590907 | E: 2771288 |
| S12-Jmw-M-07 | N: TBD | E: TBD |

Strathmore Resources, Ltd.
Roca Honda Project
Proposed Exploration
Drill Holes (Sects. 9, 10, & 16)

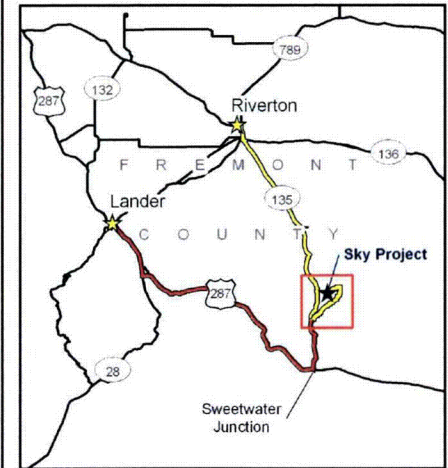
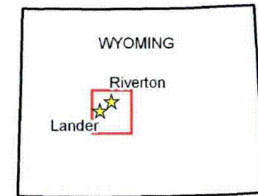


| | | |
|---|---|----------------|
| STRATHMORE RESOURCES, US, Ltd. Exploration and Development Santa Fe, New Mexico | | |
| PROPOSED EXPLORATION DRILL HOLES ROCA HONDA PROJECT SECTS. 9, 10 & 16, T 13 N - R 8 W McKinley County, New Mexico, USA | | |
| Geology: | Drafting: Darren C. Green Apogon Technologies | Scale: n/a |
| Notes: | | Date: 04.20.07 |



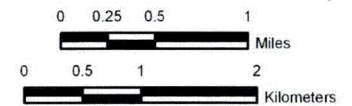
Strathmore Resources Sky Project Location/Access Map

Location Maps



Red frame denotes area of detail at left

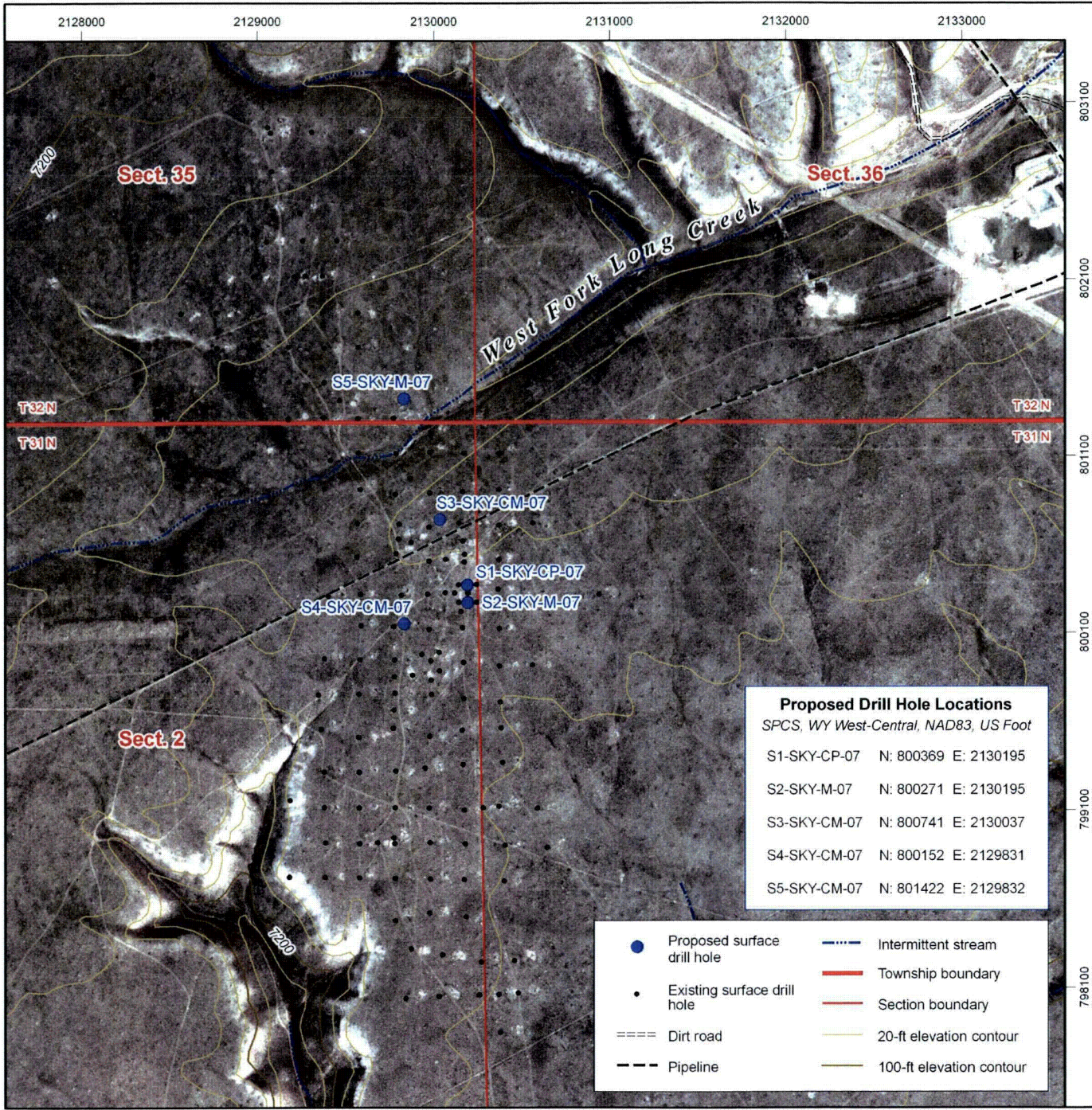
State Plane Coordinate System
Wyoming, West-Central Zone, US Foot
NAD83



STRATHMORE RESOURCES, US, Ltd.
Exploration and Development
Riverton, Wyoming

LOCATION/ACCESS MAP
SKY PROJECT
Claim #'s: CR-1 to CR-50
Fremont County, Wyoming, USA

| | | | | | |
|----------|-----|-----------|-----------------------------------|--------|----------|
| Geology: | n/a | Drafting: | D.C. Green Apogen Technologies | Scale: | n/a |
| Notes: | | | | Date: | 09.19.06 |



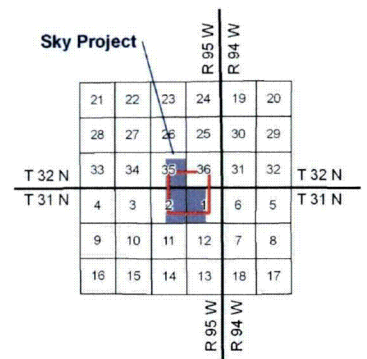
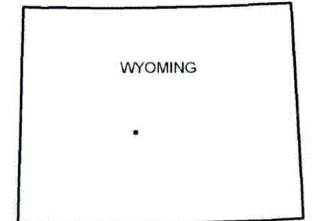
Proposed Drill Hole Locations
 SPCS, WY West-Central, NAD83, US Foot

| | | |
|--------------|-----------|------------|
| S1-SKY-CP-07 | N: 800369 | E: 2130195 |
| S2-SKY-M-07 | N: 800271 | E: 2130195 |
| S3-SKY-CM-07 | N: 800741 | E: 2130037 |
| S4-SKY-CM-07 | N: 800152 | E: 2129831 |
| S5-SKY-M-07 | N: 801422 | E: 2129832 |

- Proposed surface drill hole
- Existing surface drill hole
- ==== Dirt road
- - - Pipeline
- Intermittent stream
- Township boundary
- Section boundary
- 20-ft elevation contour
- 100-ft elevation contour

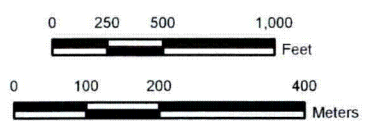
Strathmore Resources Sky Project Proposed Exploration Drill Holes

Location Maps



Red frame denotes area of detail at left

State Plane Coordinate System
 Wyoming, West-Central Zone, US Foot
 NAD83



| | | |
|---|---|----------------|
| STRATHMORE RESOURCES, US, Ltd. Exploration and Development Riverton, Wyoming | | |
| PROPOSED EXPLORATION DRILL HOLES SKY PROJECT Claim #'s: CR-1 to CR-50 Fremont County, Wyoming, USA | | |
| Geology: | Drafting: D.C. Green Apogen Technologies | Scale: n/a |
| Notes: | | Date: 09.21.06 |