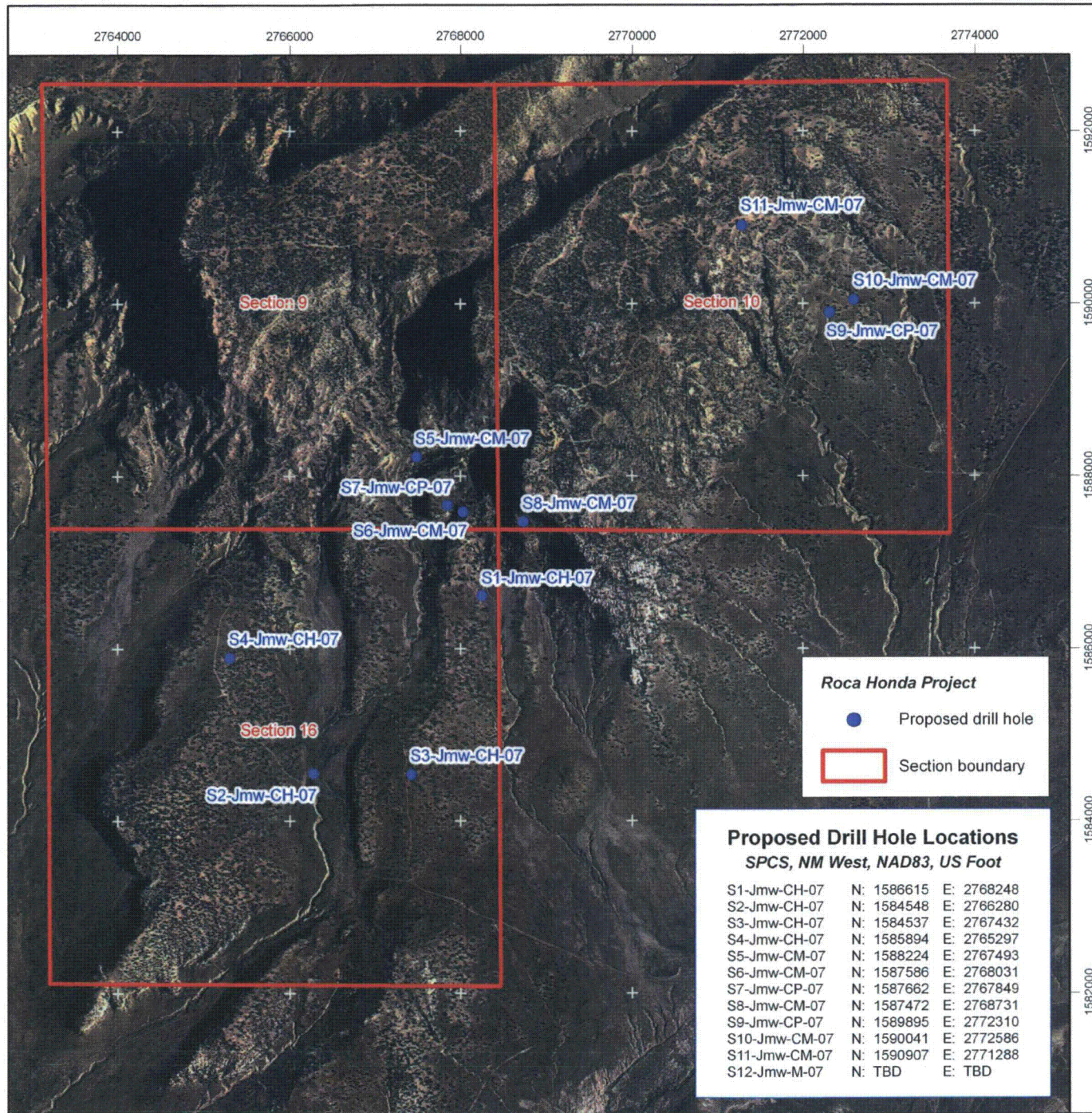


# **ATTACHMENT 4**

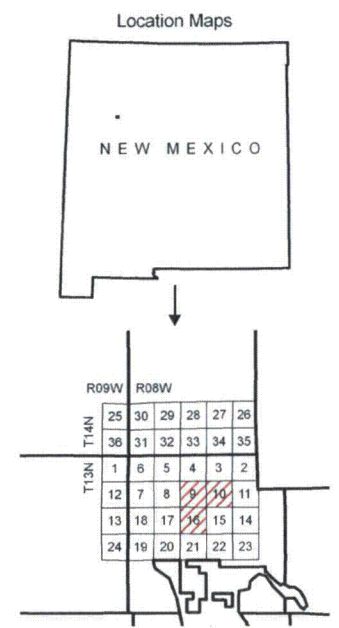
**STRATHMORE MINERAL CORPORATION  
ROCA HONDA HANDOUTS**



**Proposed Drill Hole Locations**  
SPCS, NM West, NAD83, US Foot

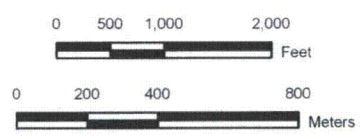
|               |            |            |
|---------------|------------|------------|
| S1-Jmw-CH-07  | N: 1586615 | E: 2768248 |
| S2-Jmw-CH-07  | N: 1584548 | E: 2766280 |
| S3-Jmw-CH-07  | N: 1584537 | E: 2767432 |
| S4-Jmw-CH-07  | N: 1585894 | E: 2765297 |
| S5-Jmw-CM-07  | N: 1588224 | E: 2767493 |
| S6-Jmw-CM-07  | N: 1587586 | E: 2768031 |
| S7-Jmw-CP-07  | N: 1587662 | E: 2767849 |
| S8-Jmw-CM-07  | N: 1587472 | E: 2768731 |
| S9-Jmw-CP-07  | N: 1589895 | E: 2772310 |
| S10-Jmw-CM-07 | N: 1590041 | E: 2772586 |
| S11-Jmw-CM-07 | N: 1590907 | E: 2771288 |
| S12-Jmw-M-07  | N: TBD     | E: TBD     |

**Strathmore Resources, Ltd.  
Roca Honda Project  
Proposed Exploration  
Drill Holes (Sects. 9, 10, & 16)**



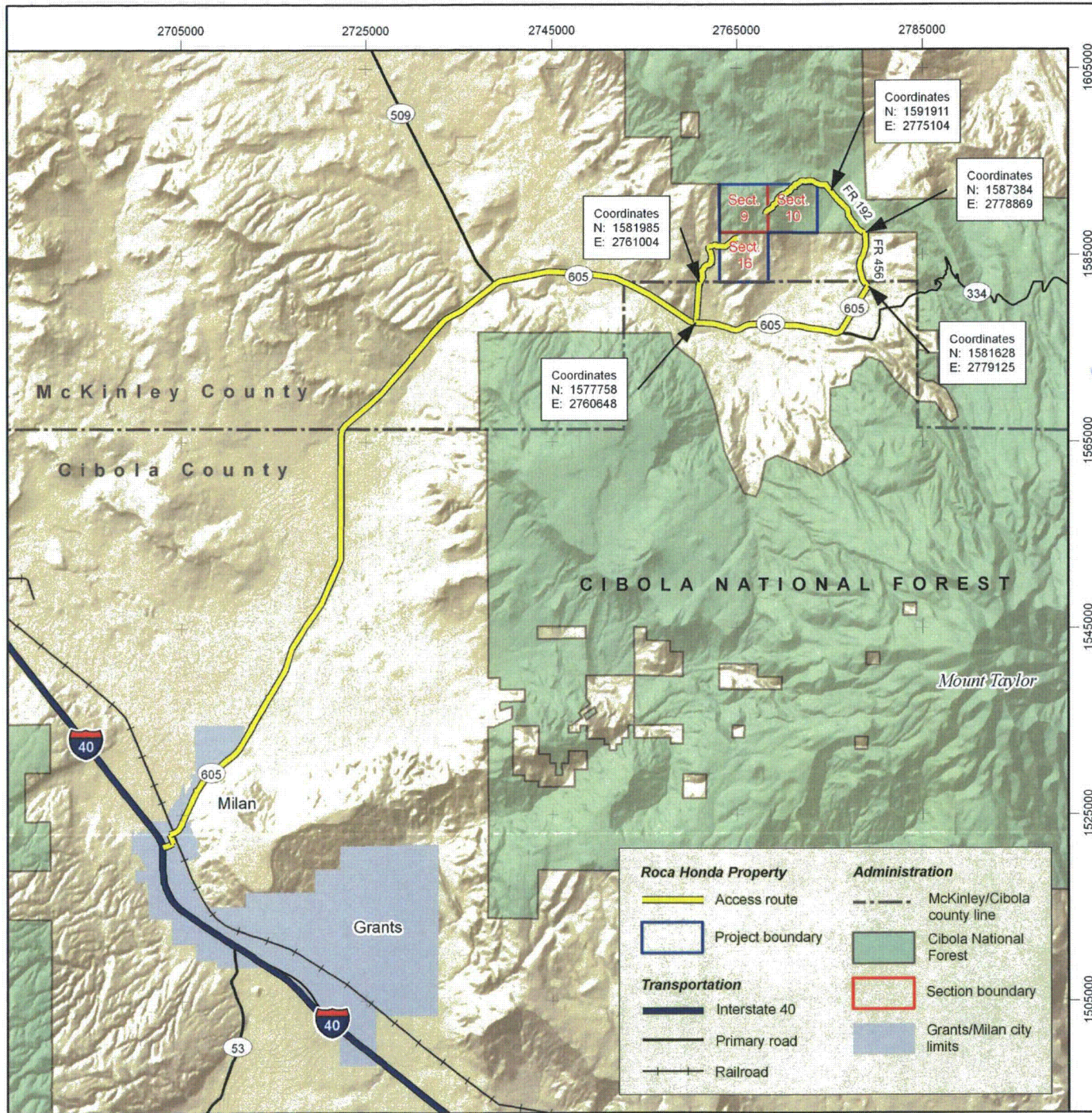
Red hatching denotes project area

State Plane Coordinate System  
New Mexico, Western Zone, US Foot  
NAD83



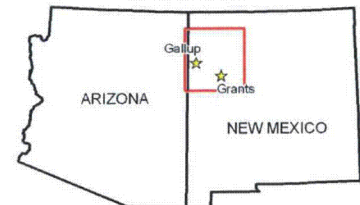
|   |  |                |
|---|--|----------------|
| <b>STRATHMORE RESOURCES, US, Ltd.</b><br>Exploration and Development<br>Santa Fe, New Mexico                                    |  |                |
| PROPOSED EXPLORATION DRILL HOLES<br>ROCA HONDA PROJECT<br>SECTS. 9, 10 & 16, T 13 N - R 8 W<br>McKinley County, New Mexico, USA |  |                |
| Geology:  | Drafting: Darren C. Green<br>Apogen Technologies | Scale: n/a     |
| Notes:  |  | Date: 04.20.07 |





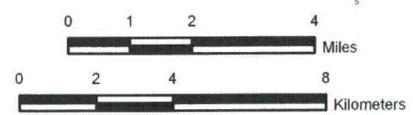
# Strathmore Resources, Ltd. Roca Honda Project Access Map Sects. 9, 10, & 16

Location Maps



Red frame denotes area of detail at left

State Plane Coordinate System  
New Mexico, Western Zone, US Foot  
NAD83



| Roca Honda Property   |                  | Administration |                             |
|-----------------------|------------------|----------------|-----------------------------|
|                       | Access route     |                | McKinley/Cibola county line |
|                       | Project boundary |                | Cibola National Forest      |
| <b>Transportation</b> |                  |                | Section boundary            |
|                       | Interstate 40    |                | Grants/Milan city limits    |
|                       | Primary road     |                |                             |
|                       | Railroad         |                |                             |

|   |   |                |
|---|---|----------------|
| <b>STRATHMORE RESOURCES, US, Ltd.</b><br>Exploration and Development<br>Santa Fe, New Mexico                        |   |                |
| LOCATION/ACCESS MAP<br>ROCA HONDA PROJECT<br>SECTS. 9, 10, & 16, T 13 N - R 8 W<br>McKinley County, New Mexico, USA |   |                |
| Geology:  | Drafting: D.C. Green<br>Apogen Technologies | Scale:<br>n/a  |
| Notes:  |   | Date: 04.20.07 |