



APR 11 2007

Technical Specification 6.9.1.9

LR-N07-0028

U.S. Nuclear Regulatory Commission
ATTN: Document Control Desk
Washington DC 20555-001

Salem Nuclear Generating Station Unit 1
Facility Operating License No. DPR-70
NRC Docket No. 50-272

SUBJECT: CORE OPERATING LIMITS REPORT - CYCLE 19

In accordance with section 6.9.1.9 of the Salem Unit 1 Technical Specifications, PSEG Nuclear LLC submits the Core Operating Limits Report (COLR) for Salem Unit 1 Cycle 19 in Attachment 1 to this letter.

Should you have any questions regarding this submittal, please contact Mr. E. Villar at (856) 339-5456.

Sincerely,

A handwritten signature in black ink, appearing to read "Thomas P. Joyce", with a long horizontal flourish extending to the right.

Thomas P. Joyce
Site Vice President - Salem

Attachments (1)

A001

APR 11 2007

Document Control Desk
Page 2
LR-N07-0028

C Mr. Samuel Collins, Administrator - Region I
U. S. Nuclear Regulatory Commission
475 Allendale Road
King of Prussia, PA 19406

U. S. Nuclear Regulatory Commission
Attn: Mr. R. Ennis, Licensing Project Manager – Salem
Mail Stop 08B1
Washington, DC 20555-0001

USNRC Senior Resident Inspector - Salem (X24)

Mr. K. Tosch, Manager IV
Bureau of Nuclear Engineering
P.O. Box 415
Trenton, NJ 08625

Attachment 1
LR-N07-0028

Core Operating Limit Report For Salem Unit 1, Cycle 19

COLR SALEM 1
Revision 0
NF-PSE-07-10
January 2007

Core Operating Limits Report for Salem Unit 1, Cycle 19

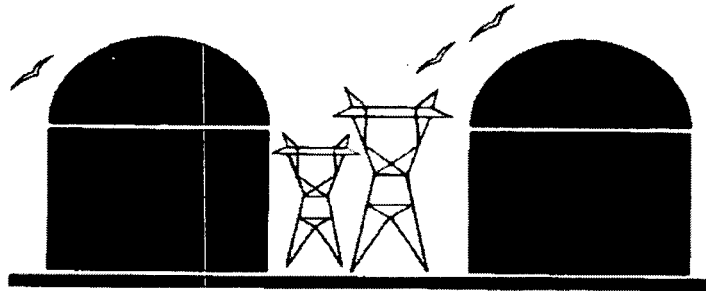


TABLE OF CONTENTS

<u>Section Number</u>	<u>Section Title</u>	<u>Page Number</u>
	Table of Contents	2
	List of Figures	3
1.0	Core Operating Limits Report	4
2.0	Operating Limits	5
2.1	Moderator Temperature Coefficient (Specification 3.1.1.4)	5
2.2	Control Rod Insertion Limits (Specification 3.1.3.5)	6
2.3	Axial Flux Difference (Specification 3.2.1)	6
2.4	Heat Flux Hot Channel Factor – $F_Q(z)$ (Specification 3.2.2)	6
2.5	Nuclear Enthalpy Rise Hot Channel Factor $F_{\Delta H}^N$ (Specification 3.2.3)	8
2.6	Boron Concentration (Specification 3.9.1)	8
3.0	References	9

LIST OF FIGURES

<u>Figure Number</u>	<u>Figure Title</u>	<u>Page Number</u>
1	Rod Bank Insertion Limits vs. Thermal Power	10
2	Axial Flux Difference Limits as a Function of Rated Thermal Power	11
3	$K(z)$ – Normalized $F_Q(z)$ as a Function of Core Height	12

1.0 CORE OPERATING LIMITS REPORT

This Core Operating Limits Report (COLR) for Salem Unit 1 Cycle 19 has been prepared in accordance with the requirements of Technical Specification 6.9.1.9.

The Technical Specifications affected by this report are listed below:

- 3.1.1.4 Moderator Temperature Coefficient
- 3.1.3.5 Control Rod Insertion Limits
- 3.2.1 Axial Flux Difference
- 3.2.2 Heat Flux Hot Channel Factor - $F_Q(Z)$
- 3.2.3 Nuclear Enthalpy Rise Hot Channel Factor - $F_{\Delta H}^N$
- 3.9.1 Boron Concentration

2.0 OPERATING LIMITS

The cycle-specific parameter limits for the specifications listed in Section 1.0 are presented in the following subsections. These limits have been developed using the NRC-approved methodologies specified in Technical Specification 6.9.1.9.

2.1 Moderator Temperature Coefficient (Specification 3.1.1.4)

2.1.1 The Moderator Temperature Coefficient (MTC) limits are:

The BOL/ARO/HZP-MTC shall be less positive than or equal to $0 \Delta k/k/^{\circ}F$.

The EOL/ARO/RTP-MTC shall be less negative than or equal to $-4.4 \times 10^{-4} \Delta k/k/^{\circ}F$.

2.1.2 The MTC Surveillance limit is:

The 300 ppm/ARO/RTP-MTC should be less negative than or equal to $-3.7 \times 10^{-4} \Delta k/k/^{\circ}F$.

where: BOL stands for Beginning of Cycle Life

ARO stands for All Rods Out

HZP stands for Hot Zero THERMAL POWER

EOL stands for End of Cycle Life

RTP stands for Rated THERMAL POWER

2.2 Control Rod Insertion Limits (Specification 3.1.3.5)

2.2.1 The control rod banks shall be limited in physical insertion as shown in Figure 1.

2.3 Axial Flux Difference (Specification 3.2.1)

[Constant Axial Offset Control (CAOC) Methodology]

2.3.1 The Axial Flux Difference (AFD) target band shall be the more restrictive of (+6%, -9%) or the target band as defined in Reference 2.

2.3.2 The AFD Acceptable Operation Limits are provided in Figure 2.

2.4 Heat Flux Hot Channel Factor - $F_Q(Z)$ (Specification 3.2.2)

[F_{xy} Methodology]

$$F_Q(Z) \leq \frac{F_Q^{RTP}}{P} * K(Z) \text{ for } P > 0.5$$

$$F_Q(Z) \leq \frac{F_Q^{RTP}}{0.5} * K(Z) \text{ for } P \leq 0.5$$

$$\text{where: } P = \frac{\text{THERMAL POWER}}{\text{RATED THERMAL POWER}}$$

$$2.4.1 \quad F_Q^{RTP} = 2.40$$

2.4.2 $K(Z)$ is provided in Figure 3.

$$2.4.3 \quad F_{xy}^L = F_{xy}^{RTP} [1.0 + PF_{xy}(1.0 - P)]$$

where: $F_{xy}^{RTP} =$

1.89	for unrodded upper core planes 1 through 7
1.77	for unrodded core planes 8 through 23
1.79	for unrodded core planes 24 through 54
1.85	for unrodded lower core planes 55 through 61
2.13	for the core planes containing Bank D control rods

$$PF_{xy} = 0.3$$

- 2.4.4 If the Power Distribution Monitoring System (PDMS) is used for core power distribution surveillance and is OPERABLE, as defined in Technical Specification 3.3.3.14, the uncertainty, U_{FQ} , to be applied to the Heat Flux Hot Channel Factor $F_Q(z)$ shall be calculated by the following formula:

$$U_{FQ} = \left(1.0 + \frac{U_Q}{100.0} \right) \bullet U_e$$

where:

U_Q = Uncertainty for power peaking factor as defined in equation 5-19 of Reference 1.

U_e = Engineering uncertainty factor.
= 1.03

Note: U_{FQ} = PDMS Surveillance Report Core Monitor Fxy Uncertainty in %.

- 2.4.5 If the INCORE movable detectors are used for core power distribution surveillance, the uncertainty, U_{FQ} , to be applied to the Heat Flux Hot Channel Factor $F_Q(z)$ shall be calculated by the following formula:

$$U_{FQ} = U_{qu} \bullet U_e$$

where:

U_{qu} = Base F_Q measurement uncertainty.
= 1.05

U_e = Engineering uncertainty factor.
= 1.03

2.5 Nuclear Enthalpy Rise Hot Channel Factor - $F_{\Delta H}^N$ (Specification 3.2.3)

$$F_{\Delta H}^N = F_{\Delta H}^{RTP} [1.0 + PF_{\Delta H} (1.0 - P)]$$

where: $P = \frac{\text{THERMAL POWER}}{\text{RATED THERMAL POWER}}$

2.5.1 $F_{\Delta H}^{RTP} = 1.65$

2.5.2 $PF_{\Delta H} = 0.3$

2.5.3 If the Power Distribution Monitoring System (PDMS) is used for core power distribution surveillance and is OPERABLE, as defined in Technical Specification 3.3.3.14, the uncertainty, $U_{F_{\Delta H}}$, to be applied to the Nuclear Enthalpy Rise Hot Channel Factor, $F_{\Delta H}^N$, shall be calculated by the following formula:

$$U_{F_{\Delta H}} = 1.0 + \frac{U_{\Delta H}}{100.0}$$

where:

$U_{\Delta H}$ = Uncertainty for enthalpy rise Nuclear Enthalpy Rise Hot Channel Factor as defined in equation 5-19 of Reference 1.

2.5.4 If the INCORE movable detectors are used for core power distribution surveillance, the uncertainty, $U_{F_{\Delta H}}$, to be applied to the Nuclear Enthalpy Rise Hot Channel Factor $F_{\Delta H}^N$ shall be calculated by the following formula:

$$U_{F_{\Delta H}} = U_{F_{\Delta Hm}}$$

where:

$U_{F_{\Delta Hm}}$ = Base $F_{\Delta H}$ measurement uncertainty.
= 1.04

2.6 Boron Concentration (Specification 3.9.1)

A Mode 6 boron concentration, maintained at or above 2170 ppm, in the Reactor Coolant System, the fuel storage pool, the refueling canal, and the refueling cavity ensures the most restrictive of the following reactivity conditions is met:

- a) A K-effective (K_{eff}) of 0.95 or less at All Rods In (ARI), Cold Zero Power (CZP) conditions with a 1% $\Delta k/k$ uncertainty added.
- b) A K_{eff} of 0.99 or less at All Rods Out (ARO), CZP conditions with a 1% $\Delta k/k$ uncertainty added.
- c) A boron concentration of greater than or equal to 2000 ppm, which includes a 50 ppm conservative allowance for uncertainties.

3.0 REFERENCES

1. WCAP-12472-P-A, BEACON Core Monitoring and Operations Support System, August 1994.
2. Salem Unit 1 Reactor Engineering Procedure, S1.RE-RA.ZZ-0011(Q), Tables.
3. Salem Nuclear Generating Station Unit No. 1, Amendment No. 272, License No. DPR-70, Docket No. 50-272.

FIGURE 1

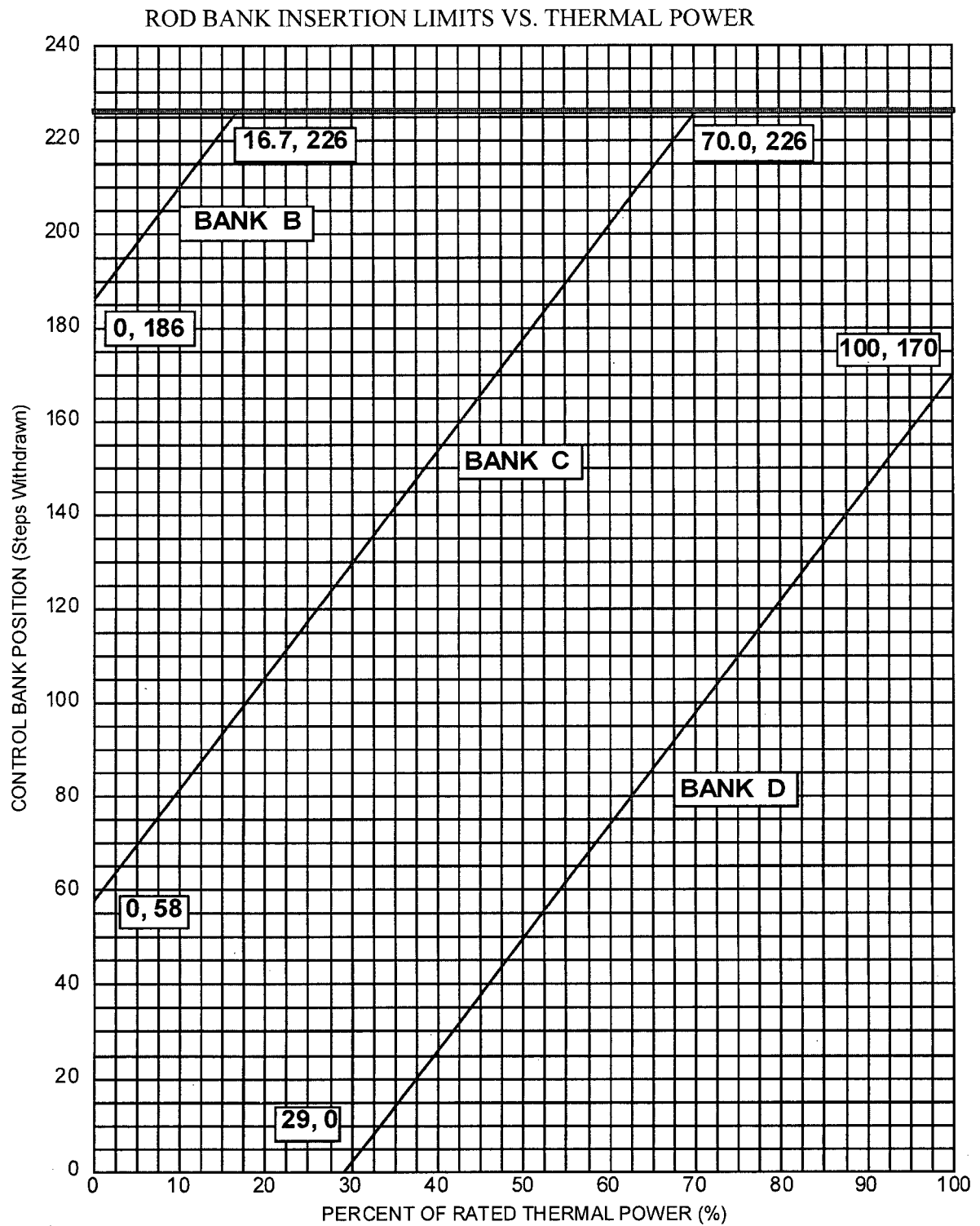


FIGURE 2

AXIAL FLUX DIFFERENCE LIMITS AS A FUNCTION OF RATED
THERMAL POWER

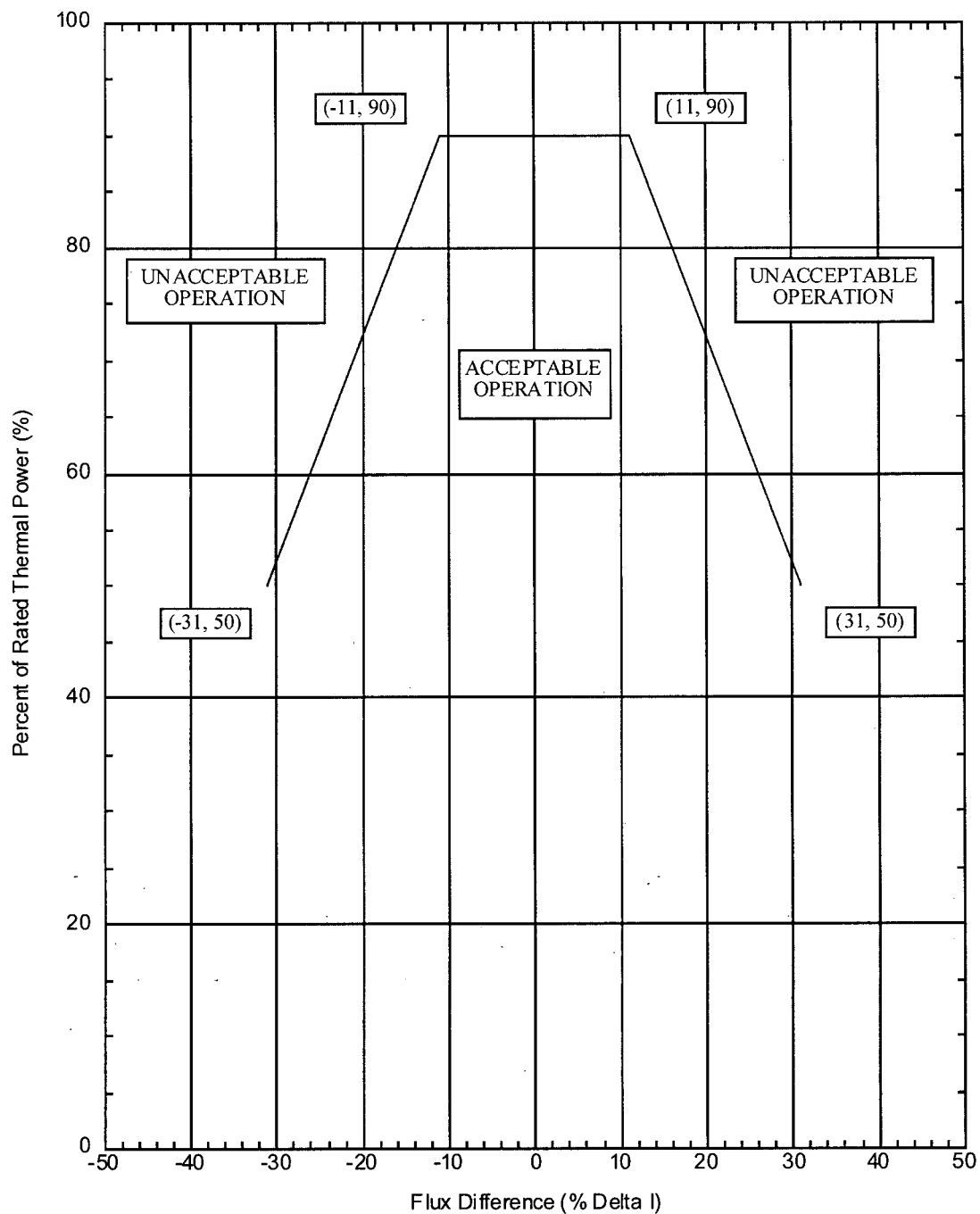


FIGURE 3

$K(Z)$ – NORMALIZED FQ(Z) AS A FUNCTION OF CORE HEIGHT

