



# SSM Cardinal Glennon Children's Hospital

Missouri Quality Award Winner

1465 S. Grand Boulevard • St. Louis, MO 63104-1095 • (314) 577 5600 *phone* • [www.cardinalglennon.com](http://www.cardinalglennon.com)

February 19, 2007

U.S. Nuclear Regulatory Commission  
Region III  
Material License Section  
2443 Warrensville Road, Suite 210  
Lisle, IL 60532-4352

I am writing to amend our NRC License Number 24-32264-01. Atchwawee Luisiri, MD has been appointed Medical Director of the Diagnostic Imaging Department. Dr. Luisiri is a board certified radiologist on the staff of SSM Cardinal Glennon Children's Hospital (Board certification attached). She replaces E. Richard Graviss, MD who had been Medical Director and Radiation Safety Officer. In her role as Medical Director, Dr. Luisiri will also serve as the hospital Radiation Safety Officer effective 1/1/2007.

We apologize for the delay in submitting this information to you as we had an incorrect address on our original letter (see attached).

If you have any questions regarding this change, please contact Cindy Strawhun, Blood Bank Supervisor at 314.268.2700 extension 1376.

Please direct any and all further NRC communications to:

Cindy Strawhun  
Blood Bank Supervisor

SSM Cardinal Glennon Children's Hospital  
1465 South Grand Boulevard  
St. Louis, MO 63104-1095

Phone: 314.577.5626 x1376  
Fax: 314.268.6484  
Email: [Cindy\\_Strawhun@ssmhc.com](mailto:Cindy_Strawhun@ssmhc.com)

Thank you.

Cindy Strawhun  
Blood Bank Supervisor

cc: Carol Gocken  
Dr. Luisiri

SSM Health Care  
Malcolm Baldrige National Quality Award

THROUGH OUR EXCEPTIONAL HEALTH CARE SERVICES, WE REVEAL THE HEALING PRESENCE OF GOD.

RECEIVED FEB 27 2007



SSM Cardinal Glennon Children's Medical Center

Missouri Quality Award Winner

1465 S. Grand Boulevard ▪ St. Louis, MO 63104-1095 ▪ (314) 577 5600 *phone* ▪ [www.cardinalglennon.com](http://www.cardinalglennon.com)

January 24, 2007

Nuclear Regulatory Commission  
Material License Branch Region III  
801 Warrensville Road  
Lisle, IL 60532-4351

I am writing to amend our NRC License Number 24-32264-01. Atchwawee Luisiri, MD has been appointed Medical Director of the Diagnostic Imaging Department. Dr. Luisiri is a board certified radiologist on the staff of SSM Cardinal Glennon Children's Hospital (Board certification attached). She replaces E. Richard Graviss, MD who had been Medical Director and Radiation Safety Officer. In her role as Medical Director, Dr. Luisiri will also serve as the hospital Radiation Safety Officer effective 1/1/2007.

If you have any questions regarding this change, please contact Cindy Strawhun, Blood Bank Supervisor at 314.268.2700 extension 1376.

Please direct any and all further NRC communications to:

Cindy Strawhun  
Blood Bank Supervisor

SSM Cardinal Glennon Children's Hospital  
1465 South Grand Boulevard  
St. Louis, MO 63104-1095

Phone: 314.577.5626 x1376  
Fax: 314.268.6484  
Email: [Cindy\\_Strawhun@ssmhc.com](mailto:Cindy_Strawhun@ssmhc.com)

Thank you.

Cindy Strawhun  
Blood Bank Supervisor

cc: Helen Gagen  
Dr. Luisiri

SSM Health Care  
Malcolm Baldrige National Quality Award  
First Health Care Recipient

THROUGH OUR EXCEPTIONAL HEALTH CARE SERVICES, WE REVEAL THE HEALING PRESENCE OF GOD.

# The American Board of Radiology

*Organized through the cooperation of the  
American College of Radiology, the American Roentgen Ray Society,  
the American Radium Society, the Radiological Society of North America,  
the Section on Radiology of the American Medical Association,  
the American Society for Therapeutic Radiology and Oncology, the Association of  
University Radiologists, and the American Association of Physicists in Medicine  
Hereby acknowledges that*

**Atchawee Luisiri, MD**

*Has successfully fulfilled the requirements of this Board's  
Maintenance of Certification Program and is certified as a  
Diplomate of the American Board of Radiology*

**Diagnostic Radiology**

*with Subspecialty Certification in*

**Pediatric Radiology**



Certificate No. 22880

*Alton A. Seidel, M.D.*  
President

*Richard T. Hoppe MD*  
Secretary-Treasurer

*R.P. Hatten*  
Executive Director

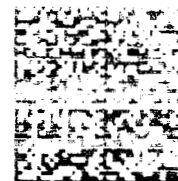


This 10-year certificate is valid  
through December 31, 2015

  
SSM Cardinal Glennon Children's Hospital

1465 S. Grand Boulevard  
St. Louis, MO 63104-1095

PRESORTED  
FIRST CLASS



04-06-2011 10:14  
\$00.308  
METROPCS  
BANK OF AMERICA  
US POSTAGE

U.S. Nuclear Regulatory Commission  
Region III  
Material License Section  
2443 Warrensville Road, Suite 210  
Lisle, IL 60532-4352

AAFLNG 60532

