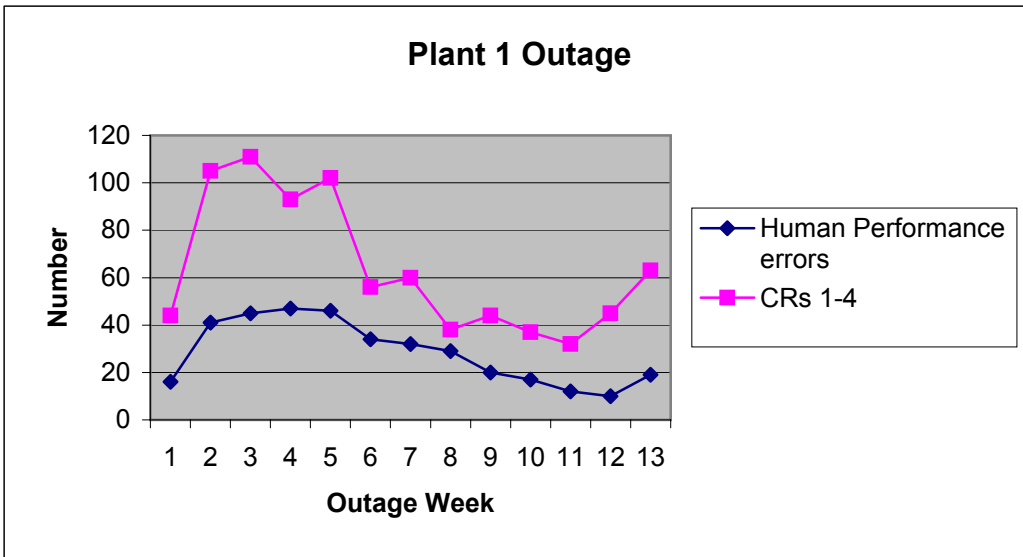
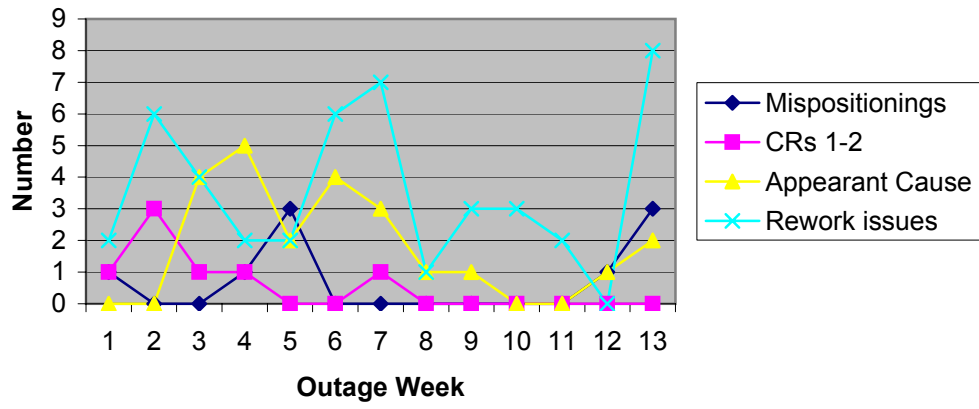


WK	3a	3c	3d	3e	3f	3g
1	16	44	1	1	0	2
2	41	105	0	3	0	6
3	45	111	0	1	4	4
4	47	93	1	1	5	2
5	46	102	3	0	2	2
6	34	56	0	0	4	6
7	32	60	0	1	3	7
8	29	38	0	0	1	1
9	20	44	0	0	1	3
10	17	37	0	0	0	3
11	12	32	0	0	0	2
12	10	45	1	0	1	0
13	19	63	3	0	2	8

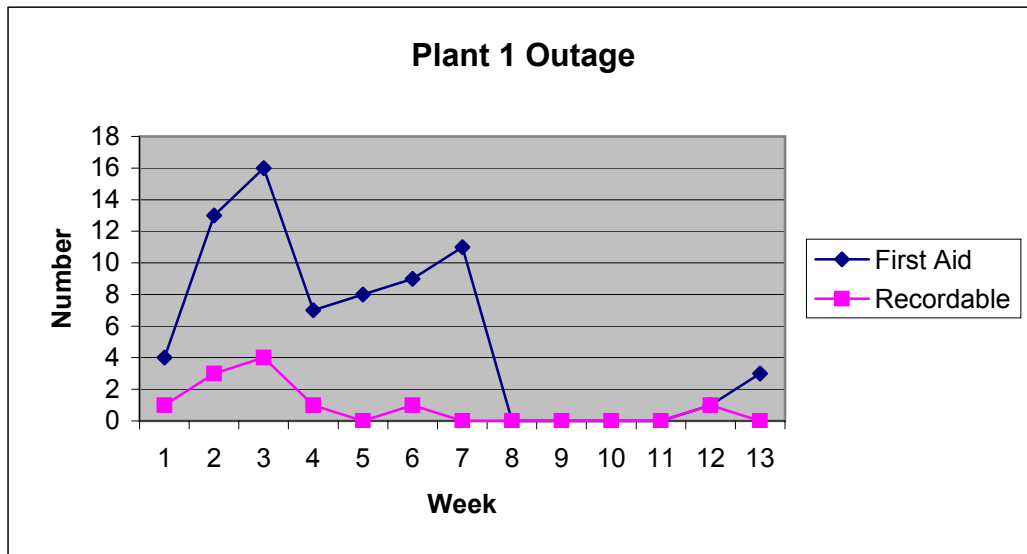


Plant 1 Outage



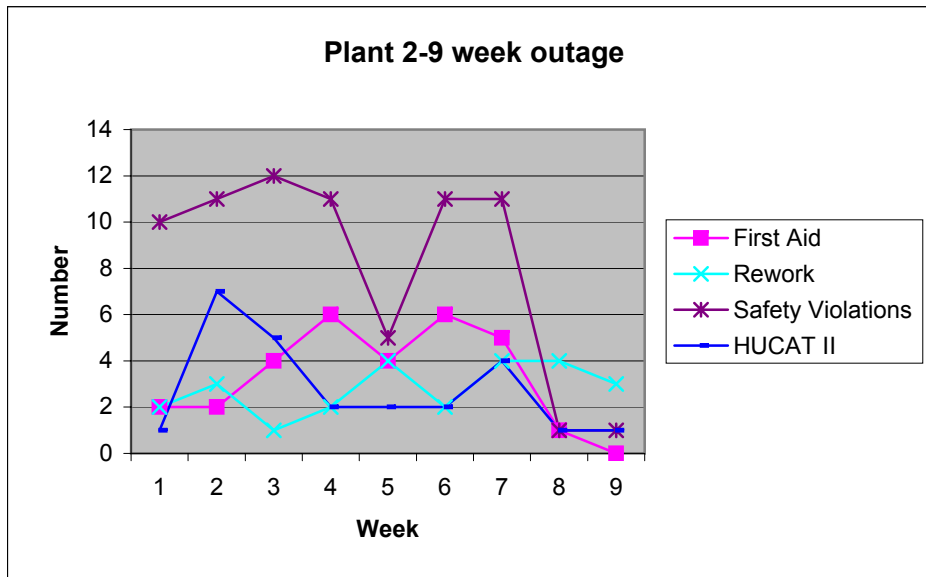
Industrial Safety Data

4	1	0
13	3	0
16	4	0
7	1	0
8	0	0
9	1	0
11	0	0
0	0	0
0	0	0
0	0	0
0	0	0
1	1	0
3	0	0

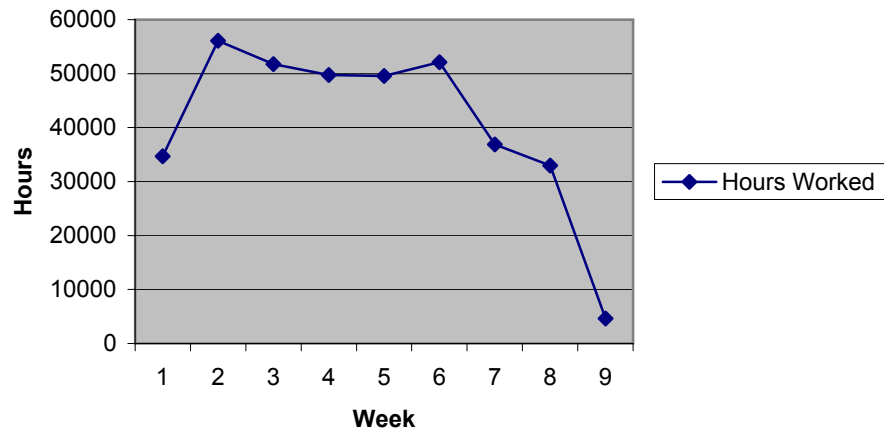


Plant 2 Outage Data

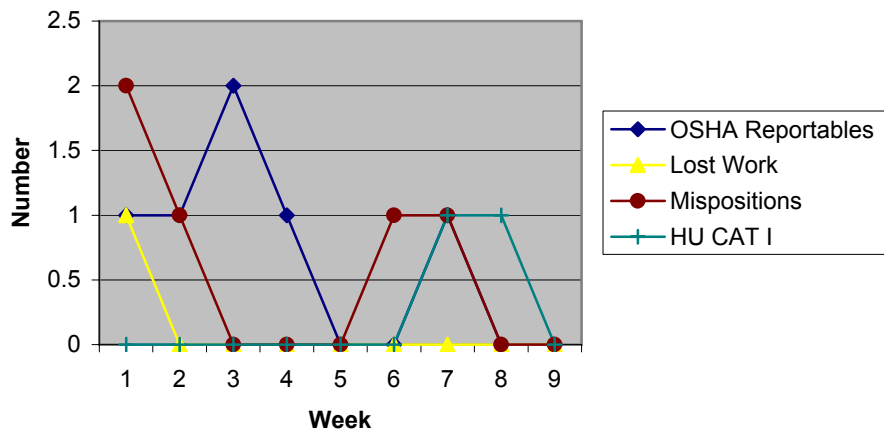
Week	1	2	3	4	5	6	7	8	9
OSHA Recordable	1	1	2	1	0	0	1	0	0
First Aid	2	2	4	6	4	6	5	1	0
Lost Work Case	1	0	0	0	0	0	0	0	0
Quality/Worker practices/rework	2	3	1	2	4	2	4	4	3
At Risk behavior/ Safety violation	10	11	12	11	5	11	11	1	1
Mispositioning	2	1	0	0	0	1	1	0	0
HU CAT I	0	0	0	0	0	0	1	1	0
HU CAT II	1	7	5	2	2	2	4	1	1
Weekly Schedule Variance (Hrs)	33	71	75.5	131	45	78	48	21	-21
Actual Man-hrs worked per week	34698	56073	51745	49750	49578	52141	36896	32988	4636



Plant 2-9 week outage

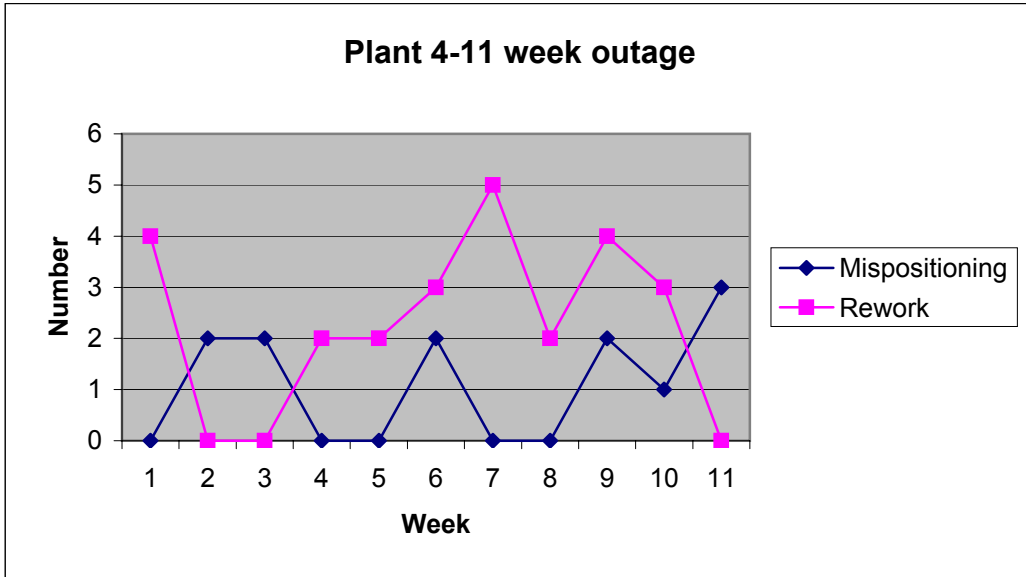


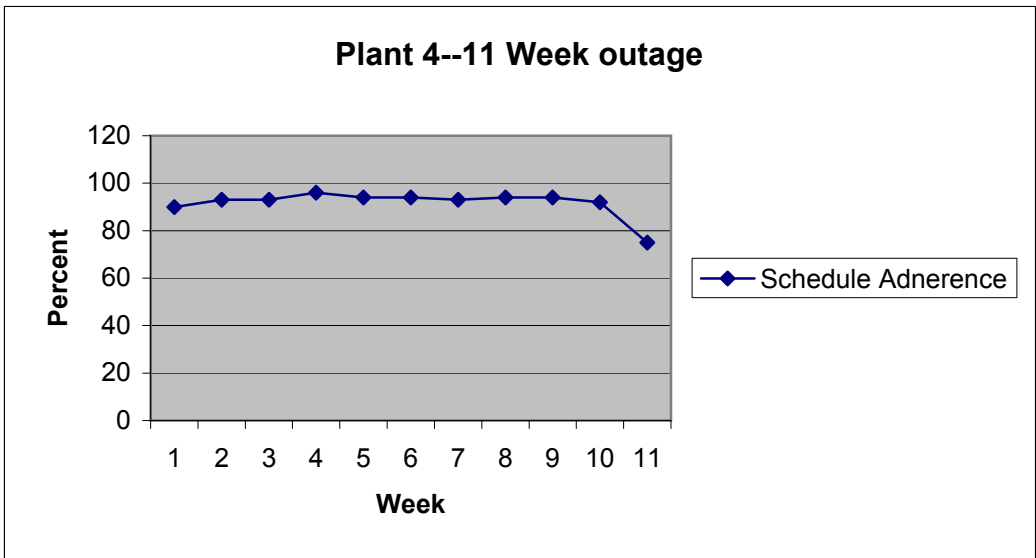
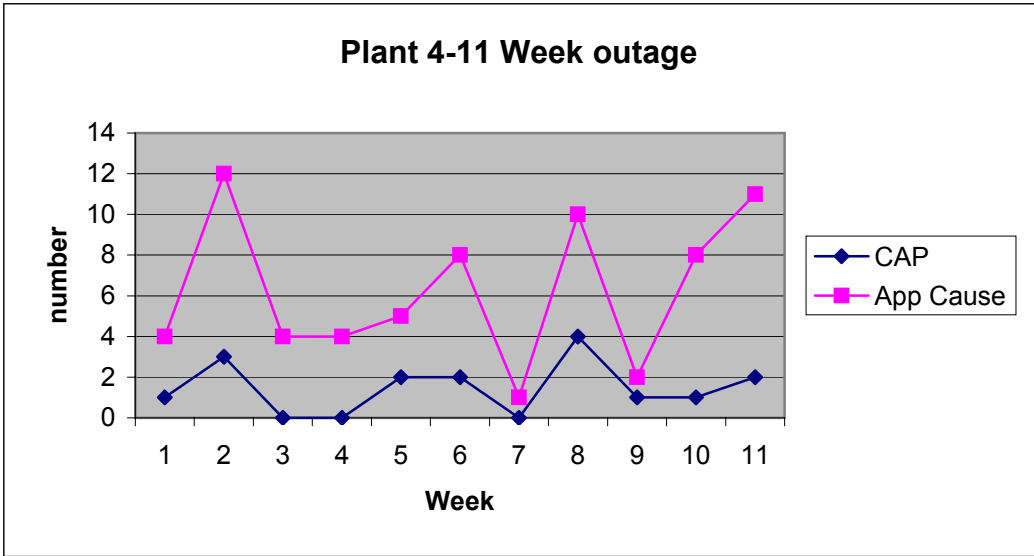
Plant 2-9 week outage



Plant 4 Outage:

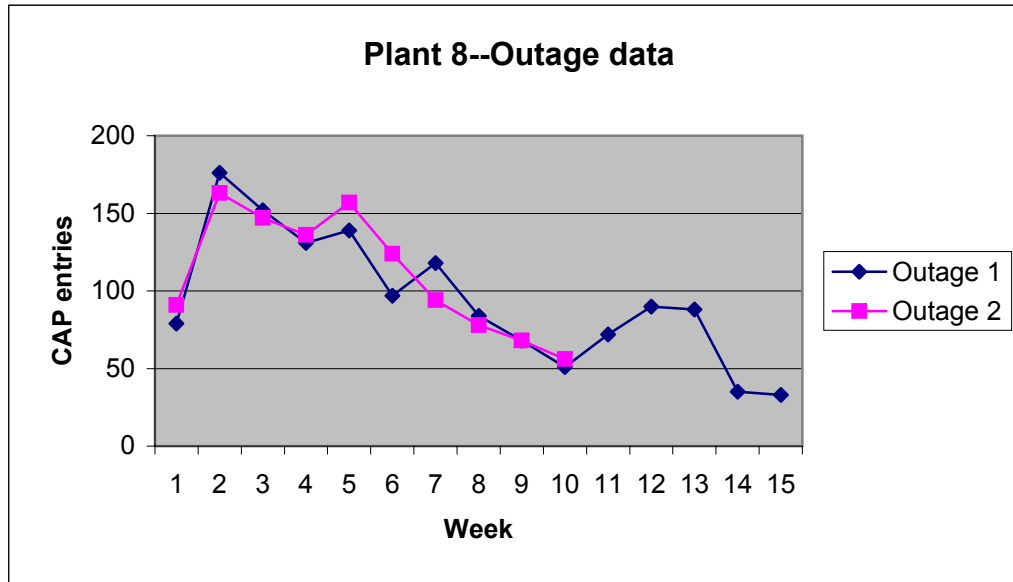
	dates	Mispositionings	Repeat Maint	OSHA Recordables	Sked Adh.	App Cause	CAP 1&2
Week 1	9/10 to 9/16	0	4	0	90	1	4
Week 2	9/17 to 9/23	2	0	0	93	3	12
Week 3	9/24 to 9/30	2	0	0	93	0	4
Week 4	10/1 to 10/7	0	2	0	96	0	4
Week 5	10/8 to 10/14	0	2	0	94	2	5
Week 6	10/15 to 10/21	2	3	0	94	2	8
Week 7	10/22 to 10/28	0	5	0	93	0	1
Week 8	10/29 to 11/4	0	2	0	94	4	10
Week 9	11/5 to 11/11	2	4	0	94	1	2
Week 10	11/12 to 11/18	1	3	0	92	1	8
Week 11	11/19 to 11/25	3	0	0	75	2	11
		12	25	0			





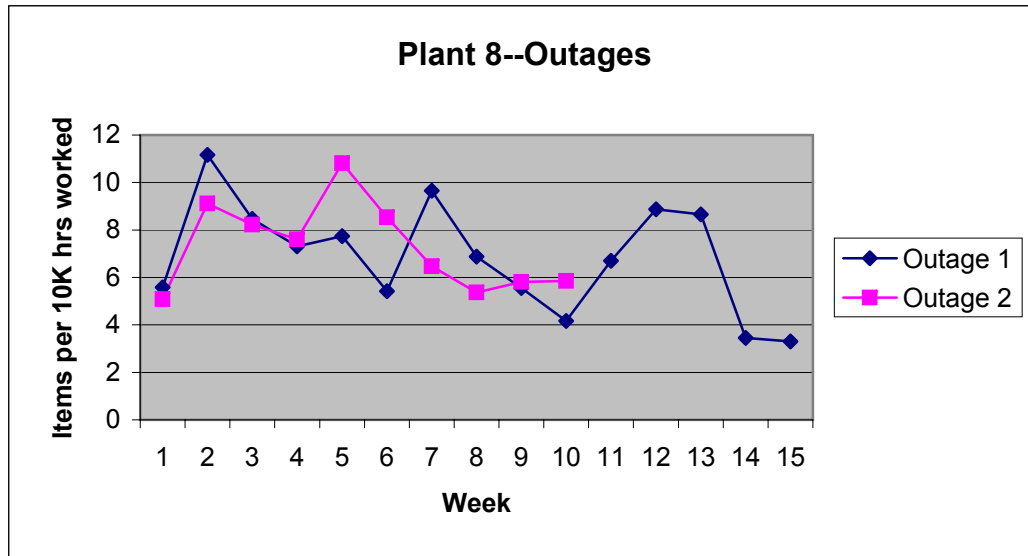
Plant 8

Week	1	2	3	4	5	6	7	8	9	10	11	12	13	14	15	Total
Outage 1	79	176	152	131	139	97	118	84	68	51	72	90	88	35	33	1413
Outage 2	91	163	147	136	157	124	94	78	68	56						1114



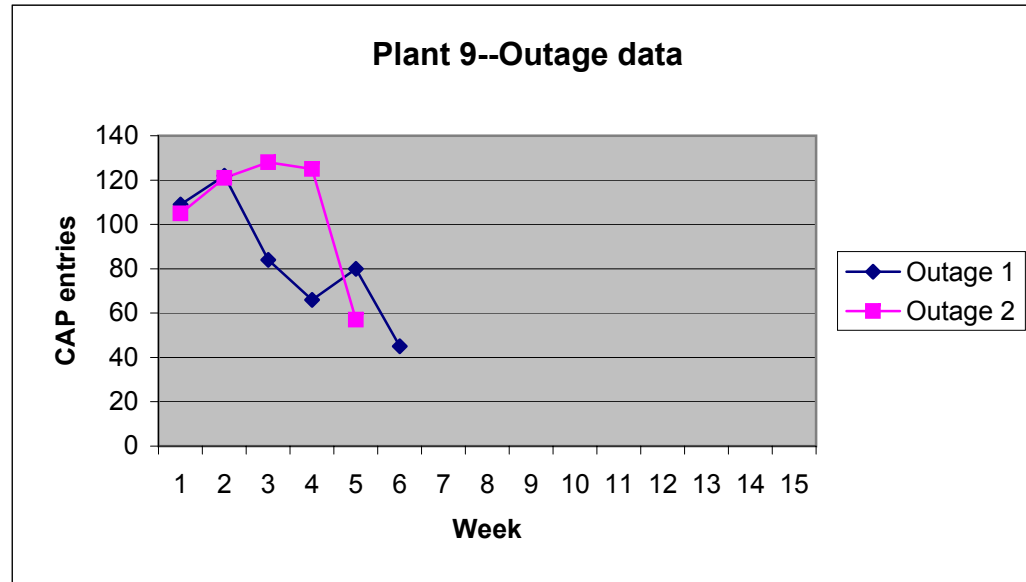
The event rate per 10000 hours worked was also reproted:

Week	1	2	3	4	5	6	7	8	9	10	11	12	13	14	15
Outage 1	5.58	11.16	8.47	7.3	7.74	5.42	9.65	6.87	5.56	4.17	6.7	8.87	8.66	3.45	3.3
Outage 2	5.08	9.12	8.22	7.6	10.8	8.53	6.47	5.37	5.81	5.85					



Plant 9

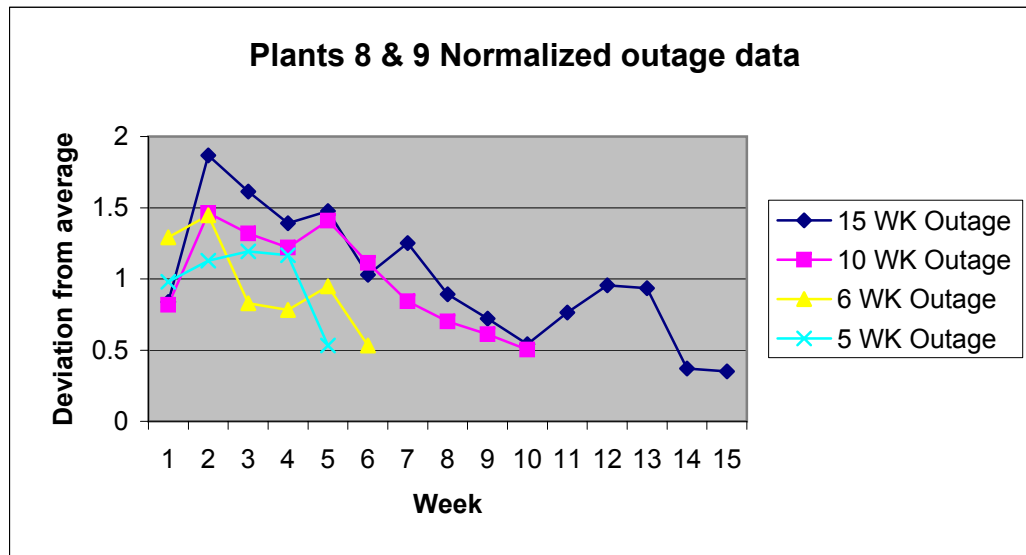
Week	1	2	3	4	5	6
Outage 1	109	122	84	66	80	45
Outage 2	105	121	128	125	57	



Normalized Data:

Week	1	2	3	4	5	6	7	8	9	10	11	12
8-1	79	176	152	131	139	97	118	84	68	51	72	90
8-2	91	163	147	136	157	124	94	78	68	56		
9-1	109	122	84	66	80	45						
9-2	105	121	128	125	57							

Week	1	2	3	4	5	6	7	8	9	10	11	12
8-1	0.838641	1.868365	1.613588	1.390658	1.475584	1.029724	1.252654	0.89172	0.721868	0.541401	0.764331	0.955414
8-2	0.816876	1.463196	1.319569	1.220826	1.409336	1.113106	0.843806	0.70018	0.610413	0.502693		
9-1	1.29249	1.44664	0.83004	0.782609	0.948617	0.533597						
9-2	0.979478	1.128731	1.19403	1.166045	0.531716							



Total
506
536

13	14	15 Total	
88	35	33	1413
			1114
			506
			536

13	14	15
0.934183	0.37155	0.350318

Plant Plant 3
 Group Operations
 Status Operating

D is 8 hour days
 S is 8 hour swings
 N is 8 hour nights
 T is 8 hour training

	x x																																		
Crew/Day	1	2	3	4	5	6	7	8	9	10	11	12	13	14	15	16	17	18	19	20	21	22	23	24	25	26	27	28	29	30	31	32	33	34	35
	M	T	W	T	F	S	S	M	T	W	T	F	S	S	M	T	W	T	F	S	S	M	T	W	T	F	S	S	M	T	W	T	F	S	S
A			T	S	S	S	S	S	S	S			N	N	N	N	N	N	N					T	T	T	D	D	D	D	D	D	D		
B	N	N	N	N	N					T	T	T	D	D	D	D	D	D	D					T	S	S	S	S	S	S	S			N	N
C			T	T	T	D	D	D	D	D	D	D					T	S	S	S	S	S	S	S			N	N	N	N	N	N	N		
D	D	D	D	D	D					T	S	S	S	S	S	S	S			N	N	N	N	N	N						T	T	T	D	D
E	S	S	S			N	N	N	N	N	N	N					T	T	T	D	D	D	D	D	D					T	S	S	S	S	

Plant Plant 5--Six shift rotation
 Group Operations
 Status Operating

D is 8 hour days
 S is 8 hour swings
 N is 8 hour nights
 T is 8 hour training
 A is 12 hour days
 P is 12 our nights
 Average is 40 hrs/wk

	x x																																		
Crew/Day	1	2	3	4	5	6	7	8	9	10	11	12	13	14	15	16	17	18	19	20	21	22	23	24	25	26	27	28	29	30	31	32	33	34	35
	M	T	W	T	F	S	S	M	T	W	T	F	S	S	M	T	W	T	F	S	S	M	T	W	T	F	S	S	M	T	W	T	F	S	S
A		D	D	D	D	A	A	D			N	N	P	P	N	N	N					R	R	R	R			S	S	S	S	S			
B	T	T	T	T	T				D	D	D	D	A	A	D			N	N	P	P	N	N	N				R	R	R	R				
C	S	S	S	S	S			T	T	T	T	T				D	D	D	D	A	A	D			N	N	P	P	N	N	N				
D	R	R	R	R				S	S	S	S	S			T	T	T	T	T				D	D	D	D	A	A	D			N	N	P	P
E	N	N	N					R	R	R	R				S	S	S	S	S			T	T	T	T	T			D	D	D	D	A	A	
F	D			N	N	P	P	N	N	N					R	R	R	R					S	S	S	S	S		T	T	T	T	T		

Plant Plant 6--Six shift rotation
 Group Operations
 Status Operating

D is 8 hour days
 S is 8 hour swings
 N is 8 hour nights
 T is 8 hour training

Average is 40 hrs/wk

	X X																																			
Crew/Day	1	2	3	4	5	6	7	8	9	10	11	12	13	14	15	16	17	18	19	20	21	22	23	24	25	26	27	28	29	30	31	32	33	34	35	
	M	T	W	T	F	S	S	M	T	W	T	F	S	S	M	T	W	T	F	S	S	M	T	W	T	F	S	S	M	T	W	T	F	S	S	
A	D	D	D	D	D					T	T	T	D	D	T			S	S	S	S	S	S	S			N	N	N	N	N	N	N			
B			T	T	T	D	D	T			S	S	S	S	S	S			N	N	N	N	N	N	N	N			R	R	R	R	R			
C	T			S	S	S	S	S	S	S			N	N	N	N	N	N	N			R	R	R	R	R			D	D	D	D	D			
D	S	S				N	N	N	N	N	N	N			R	R	R	R	R			D	D	D	D	D					T	T	T	D	D	
E	N	N	N	N	N			R	R	R	R	R			D	D	D	D	D					T	T	T	D	D	T			S	S	S	S	S
F	R	R	R	R	R			D	D	D	D	D					T	T	T	D	D	T			S	S	S	S	S	S	S	S			N	N

Plant Plant 6--5 shift rotation
 Group Operations
 Status Operating

D is 8 hour days
 S is 8 hour swings
 N is 8 hour nights
 T is 8 hour training

Average is 40 hrs/wk

	X X																																			
Crew/Day	1	2	3	4	5	6	7	8	9	10	11	12	13	14	15	16	17	18	19	20	21	22	23	24	25	26	27	28	29	30	31	32	33	34	35	
	M	T	W	T	F	S	S	M	T	W	T	F	S	S	M	T	W	T	F	S	S	M	T	W	T	F	S	S	M	T	W	T	F	S	S	
A	D	D	D	D	D					T	T	T	D	D	T			S	S	S	S	S	S	S			N	N	N	N	N	N	N			
B			T	T	T	D	D	T			S	S	S	S	S	S			N	N	N	N	N	N	N	N			D	D	D	D	D			
C	T			S	S	S	S	S	S	S			N	N	N	N	N	N	N			D	D	D	D	D					T	T	T	D	D	
D	S	S	S			N	N	N	N	N	N	N			D	D	D	D	D					T	T	T	D	D	T			S	S	S	S	S
E	N	N	N	N	N			D	D	D	D	D					T	T	T	D	D	T			S	S	S	S	S	S	S	S			N	N

Plant Plant 7
 Group Operations
 Status Operating

D is 8 hour days
 S is 8 hour swings
 N is 8 hour nights
 T is 8 hour training

Average is 40 hrs/wk
 A is 12 hour days
 P is 12 hour nights

		X	X	X	X	X	X	X	X	X	X	X	X	X	X	X	X	X	X	X	X	X	X	X	X	X	X	X	X	X	X	X	X	X	X	X	X	X	X	X	X
Crew/Day	1	2	3	4	5	6	7	8	9	10	11	12	13	14	15	16	17	18	19	20	21	22	23	24	25	26	27	28	29	30	31	32	33	34	35						
	M	T	W	T	F	S	S	M	T	W	T	F	S	S	M	T	W	T	F	S	S	M	T	W	T	F	S	S	M	T	W	T	F	S	S						
A	D	D	D			N	P	P	N	N	N	N			T	T	T	T				S	S	S	S	S			R	R	R	R									
B	P	N	N	N	N			T	T	T	T	T			S	S	S	S	S			R	R	R	R							D	D	A	A						
C	T	T	T	T	T			S	S	S	S	S			R	R	R	R							D	D	A	A	D	D	D				N	P					
D	S	S	S	S	S			R	R	R	R						D	D	A	A	D	D	D			N	P	P	N	N	N	N	N								
E	R	R	R	R							D	D	A	A	D	D	D			N	P	P	N	N	N	N			T	T	T	T	T								
F				D	D	A	A	D	D	D			N	P	P	N	N	N	N			T	T	T	T	T			S	S	S	S	S								

Plant 5 (Cont.)

	x	x	x	x	x	x	
36	37	38	39	40	41	42	
M	T	W	T	F	S	S	
T	T	T	T	T			
S	S	S	S	S			
R	R	R	R				
N	N	N					
D			N	N	P	P	
	D	D	D	D	A	A	

Plant 6 (Cont.)

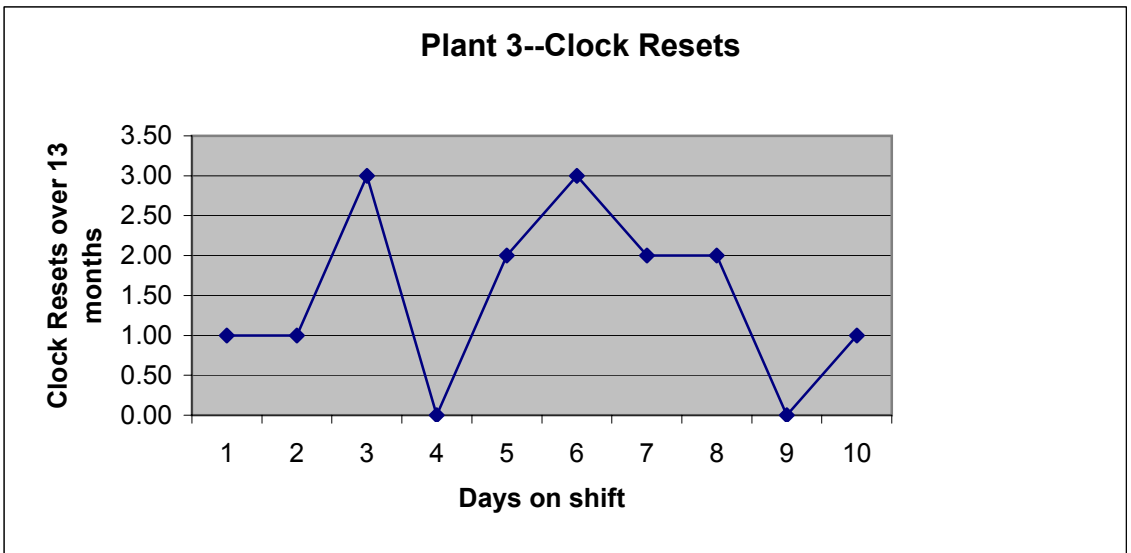
X	X	X	X	X	X	
36	37	38	39	40	41	42
M	T	W	T	F	S	S
R	R	R	R	R		
D	D	D	D	D		
		T	T	T	D	D
T			S	S	S	S
S	S	S			N	N
N	N	N	N	N		

Plant 7 (Cont.)

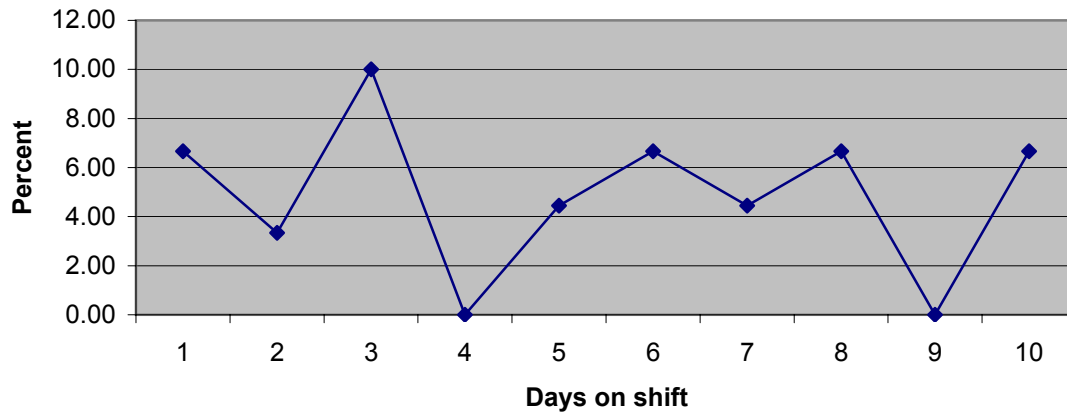
X	X	X	X	X	X	X
36	37	38	39	40	41	42
M	T	W	T	F	S	S
			D	D	A	A
D	D	D			N	P
P	N	N	N	N		
T	T	T	T	T		
S	S	S	S	S		
R	R	R	R			

Plant 3 Data

Day	1.00	2.00	3.00	4.00	5.00	6.00	7.00	8.00	9.00	10.00	Total
Clock Resets	1.00	1.00	3.00	0.00	2.00	3.00	2.00	2.00	0.00	1.00	15.00
Day number	1	2	3	4	5	6	7	8	9	10	
Days	T	T	T	D	D	D	D	D	D	D	
Evening	T	S	S	S	S	S	S	S			
Night	N	N	N	N	N	N	N				
Days per cycle	1.00	2.00	2.00	3.00	3.00	3.00	3.00	2.00	1.00	1.00	21.00
Percent each	4.76	9.52	9.52	14.29	14.29	14.29	14.29	9.52	4.76	4.76	
Events per day worked	1.00	0.50	1.50	0.00	0.67	1.00	0.67	1.00	0.00	1.00	
Percentage	6.67	3.33	10.00	0.00	4.44	6.67	4.44	6.67	0.00	6.67	



Plant 3--Operations Clock Resets

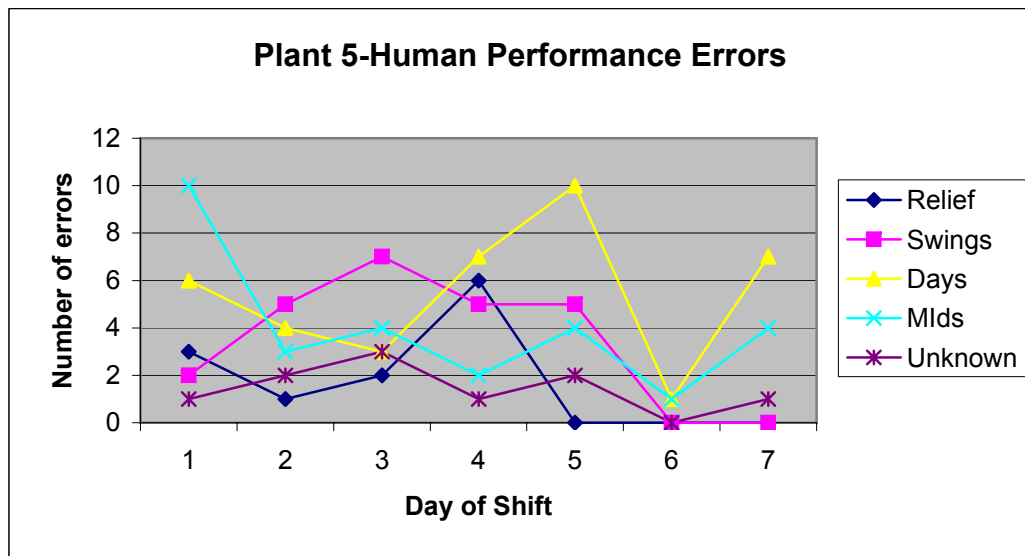


	Sum	Percent
Days 1 to 6	14.00	66.67
Days 7 to 10	7.00	33.33
1 of 10 reports. 6 days		20.00
Events Day 1-6	10.00	0.67
EventsDay 7-10	5.00	0.33

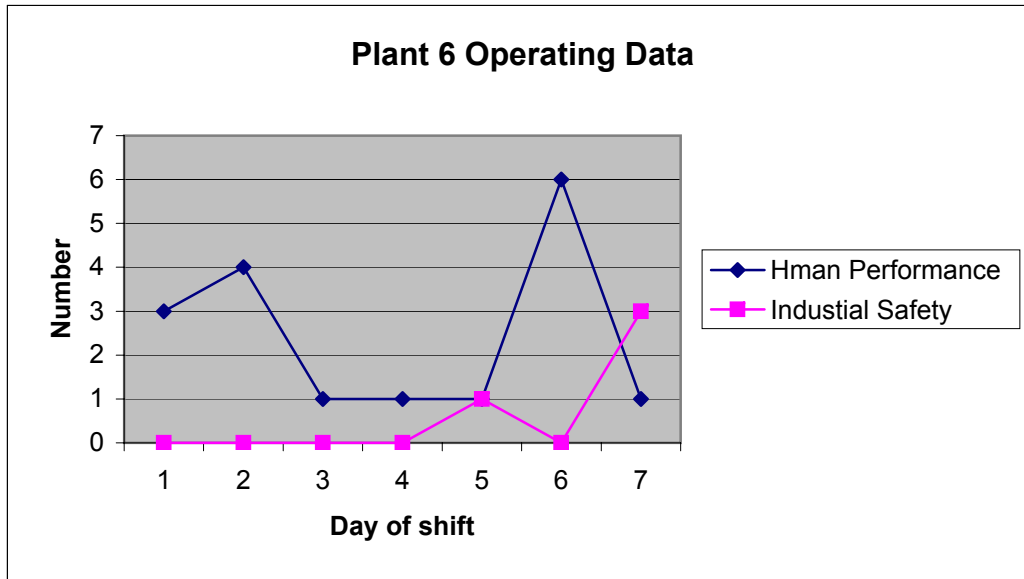
Plant 5

Plant 5 provide a summary human performance errors in all categories without separataing data.

	Day 1	Day 2	Day 3	Day 4	Day 5	Day 6	Day 7	Sum	Average
Relief M -F	3	1	2	6	0	0	0	12	2.4
Swings M - F	2	5	7	5	5	0	0	24	4.8
Days T - M	6	4	3	7	10	1	7	38	5.428571
Mids Th - W	10	3	4	2	4	1	4	28	4
Unknown M - S	1	2	3	1	2	0	1	10	1.428571

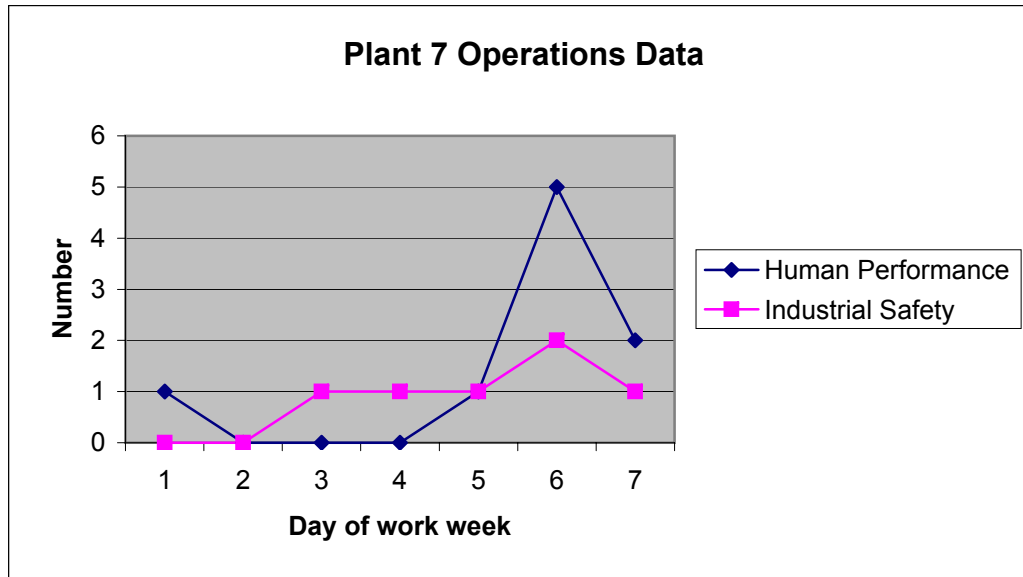


Plant 6							
Day of Shift	1	2	3	4	5	6	7
Human Performance errors	3	4	1	1	1	6	1
Industrial Safety	0	0	0	0	1	0	3



Plant 7

Day of work week	1	2	3	4	5	6	7
Human Performance Errors	1	0	0	0	1	5	2
Industrial Safety Incidents	0	0	1	1	1	2	1



	Day 1			Day 2			Day 3		
	00 to 08	08 to 16	16 to 24	00 to 08	08 to 16	16 to 24	00 to 08	08 to 16	16 to 24
Crew 1		Days	--48 hour break--						Swings
Crew 2			Swings	--24 hour break--			Nights		
Crew 3	Nights	--48 hour break--						Days	

Note: In calculating days off only midnight to midnight days were counted in which there was no work. In the normal 8-hour rotation, if 24-hour periods were counted there would be two extra 24-hour periods. However, experience indicates that the extra time is involved in adjusting to the new shift schedule. In a 12-hour rotation there would be one extra 24-hour period.