

## Daily Survey Journal

Page 1 of 1

Survey Area No.: <i>SVC-01</i>	Survey Area Name:	Survey Date: <i>11-30-05</i> <i>12-01-05</i>
Survey Unit No. and Name: <i>SVC-01-18</i>		
Specific instructions for using the Daily Survey Journal.		
<p>1 The Daily Survey Journal provides the means to record those items required by the FSSP Worksheet as well as any deviations or anomalies that should be brought to the attention of the cognizant FSS Radiological Engineer or the FSS Project Manager.</p> <p>2 All documentation will be complete and legible.</p>		
TIME	NOTES FOR SURVEY DATE	
<i>0700</i>	<i>Pre Job brief for FSSP SVC-01-18 see APF 0626.02</i>	
	<i>Survey Team members R. Shippee T. Mayer C. Crosier</i>	
<i>1400</i>	<i>Collected ambient background measurements IAW</i>	
	<i>Step 3 Gen. Instructions + DP 8866 using <sup>See Attached</sup> Form.</i>	
	<i>E-600 # 5156 Cal Due 2-22-06 +</i>	
	<i>HP-100C # 51597 Cal Due <sup>28th</sup> 2-22-06 eff .135</i>	
	<i>Pre Ops Source check "SAT"</i>	
<i>1450</i>	<i>Collected 25 Fixed Point Measurements IAW</i>	
	<i>step 4 + DP 8534. All FPMs are &lt; the investigation</i>	
	<i>action level. For instrument data see Bkgd measurements</i>	
<i>late entry 0800</i>	<i>established the random start grid locations for</i>	
	<i>FPM IAW. step 2 of the plan. A total of 25 FPM.</i>	
	<i>locations were marked on the concrete surface.</i>	
<i>12-01-05</i>		
<i>0800</i>	<i>Post Ops Source check of instruments "SAT"</i>	

Completed by *Ronald Shippee* Date *12-01-05*  
FSS Field Supervisor

Reviewed by *J. Brown* Date *12-14-05*  
FSS Radiological Engineer





PORTABLE/GAMMA RDS & SOURCE CHECK FORM

E-600  
Meter  
Type

HP100C  
Detector  
Type

51597  
Detector  
Number

E-21  
Source  
ID

18236  
Net  
Acceptance  
Criteria  
- 20%

23754 27354  
Net  
Acceptance  
Criteria <sup>DN</sup> 11.30.05  
+ 20%

PRE USE CHECKS								POST USE CHECKS							
Date	Time	Audible Check	Alarm Check	BKG Counts	SRC Counts	Net Counts	Int	Date	Time	Audible Check	Alarm Check	BKG Counts	SRC Counts	Net Counts	Int
12-1-05	0824	SAT	N/A	208	22800	22592	ND	12-1-05	0730	SAT	N/A	155	22200	22045	DN
12-1-05	0730	SAT	N/A	155	22200	22045	DN	12-1-05	1240	SAT	N/A	143	21800	21657	DN
12-1-05	1240	SAT	N/A	143	21800	21657	DN	12-1-05	1420	SAT	N/A	165	19670	19505	DN
12-2-05	1000	SAT	N/A	247	22400	22153	DN	12-5-05	0830	SAT	N/A	216	23200	22984	DN
12-5-05	0830	SAT	N/A	216	23200	22984	DN								**
12-5-05	0605	SAT	N/A	281	23400	23119	DN	12-6-05	1515 1515 1315	SAT	N/A	181	22300	22119	DN
* 12-6-05	0945	SAT	N/A	118	19690	19572	DN	* 12-6-05	1330	SAT	N/A	197	21400	21203	VB
* 12-6-05	1330	SAT	N/A	197	21400	21203	VB	* 12-6-05	1445	SAT	N/A	134	21000	20866	DN
12-7-05	0615	SAT	N/A	234	23100	22866	DN								**
* 12-7-05	1415	SAT	N/A	146	26800	26654	DN	* 12-7-05	1700	SAT	N/A	152	19630	19478	DN
12-8-05	0700	SAT	N/A	225	22600	22325	DN								**
								A							
								N							

RP Supervisor Review: [Signature] (1)

(1) If any post-use source check failures occur, ensure that the condition is documented by a Condition Report.

\* Source check "SAT" 28° F per SAS.

\*\* Not Used.

\*\* Source check "SAT" 17° F per SAS.

**Daily Survey Journal**

Page 1 of 1

Survey Area No.: <i>SVC-01</i>	Survey Area Name:	Survey Date: <i>12-1-05</i>
Survey Unit No. and Name: <i>SVC-01-18</i>		
Specific instructions for using the Daily Survey Journal.		
<p>1 The Daily Survey Journal provides the means to record those items required by the FSSP Worksheet as well as any deviations or anomalies that should be brought to the attention of the cognizant FSS Radiological Engineer or the FSS Project Manager.</p> <p>2 All documentation will be complete and legible.</p>		
TIME	NOTES FOR SURVEY DATE	
<i>0630</i>	<i>Pre Job brief for FSSP - SVC-01-18-00</i>	
	<i>see APF 0626.2 concrete scan survey.</i>	
	<i>Survey Team</i>	
	<i>R Shippee sup. T. Moyers, C Crasick.</i>	
	<i>Performed concrete scan surveys @ the following #</i>	
	<i>instruments:</i>	
	<i>E-600 02490</i>	<i>Cal DVE. 2-15-06</i>
	<i>HP-100-C 51598</i>	<i>2-8-06 Eff 0.146</i>
	<i>E-600 5156</i>	<i>2-22-06</i>
	<i>HP-100-C 51547</i>	<i>2-28-06 Eff 0.135</i>
	<i>E-600 02488</i>	<i>3-15-06</i>
	<i>SPA-3 61034</i>	<i>12-22-<sup>05</sup><del>06</del> Eff 233 <sup>cpm/pci/g</sup></i>
	<i>E-600 01645</i>	<i>3-30-06</i>
	<i>SPA-3 51846</i>	<i>12-02-05 Eff 271 <sup>cpm/pci/g</sup></i>
<i>1240</i>	<i>Commenced scan survey @ E-600/HP-100c @ 1/2" distance</i>	
	<i>scan speed 2"/sec. Irregular concrete surface also scanned</i>	
	<i>@ E-600/SPA-3 @ 3" distance, scan speed .25 m/sec.</i>	
<i>1600</i>	<i>All scan surveys complete No Scan Indication Identified</i>	
	<i>Post Ops source check "SKT"</i>	

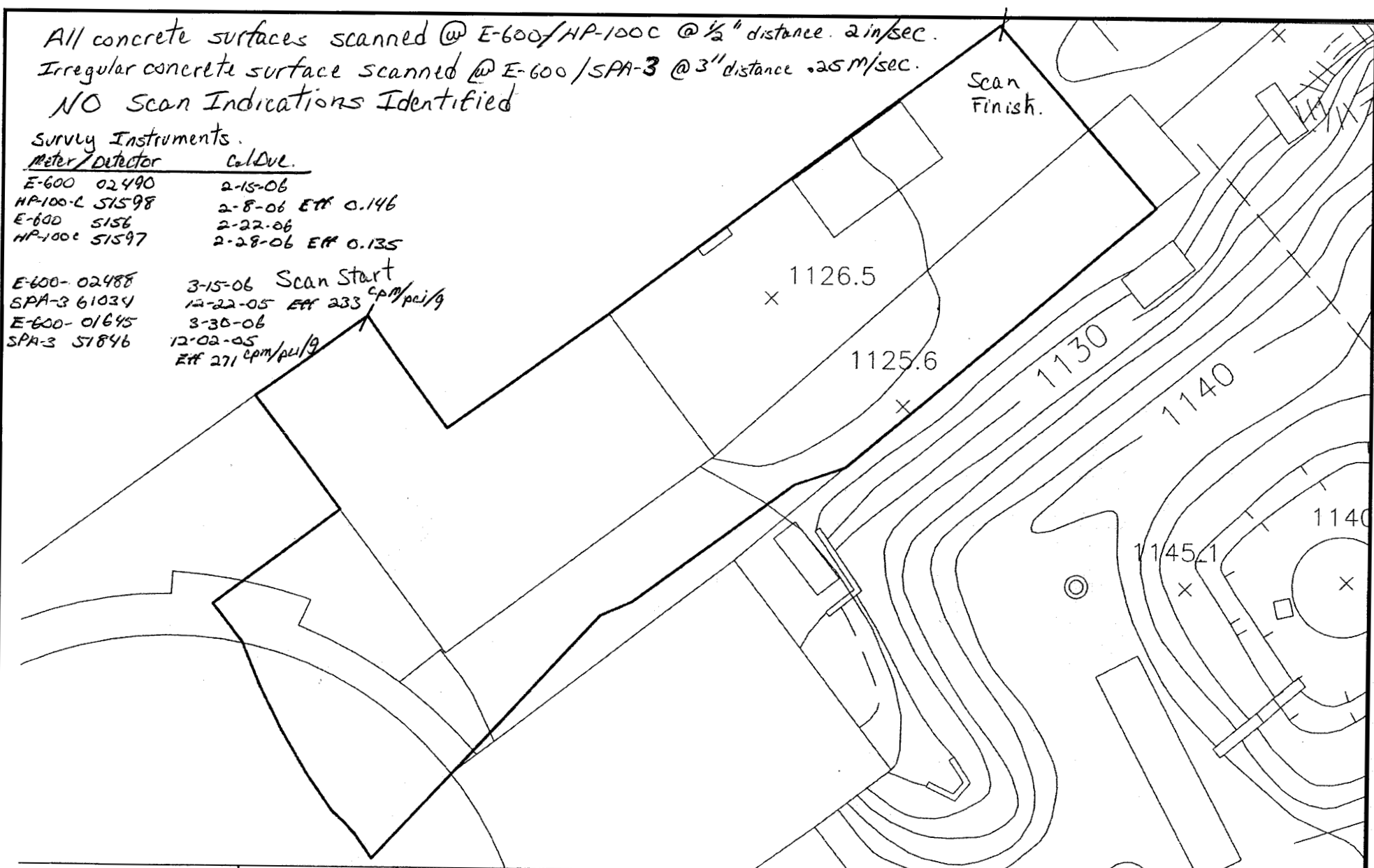
Completed by *Ronald Shippee* Date *12-1-05*  
 FSS Field Supervisor

Reviewed by *J. Brism* Date *12-14-05*  
 FSS Radiological Engineer

All concrete surfaces scanned @ E-600/HP-100C @ 1/2" distance. 2 in/sec.  
 Irregular concrete surface scanned @ E-600/SPA-3 @ 3" distance .25 m/sec.  
 NO Scan Indications Identified

Survey Instruments.

Meter/Detector	Cal Due.
E-600 02490	2-15-06
HP-100-C 51598	2-8-06 EFF 0.146
E-600 5156	2-22-06
HP-100C 51597	2-28-06 EFF 0.135
E-600-02488	3-15-06 Scan Start
SPA-3 61034	12-22-05 EFF 233 cpm/psi/g
E-600-01645	3-30-06
SPA-3 51846	12-02-05 EFF 271 cpm/psi/g



Legend  
 ~ = Survey Unit Boundary  
 DPF-8865.1

Map current as of  
 November 14, 2005  
 SVC-01-18 12-01-05  
 Scan Survey 1240  
 R. Shippel T. Moyers C. Crosier

Yankee Atomic Power Company

Reviewed by:  
 Date:



PORTABLE/GAMMA RADIATION SOURCE CHECK FORM

E-600  
Meter  
Type

HP100C  
Detector  
Type

51597  
Detector  
Number

E-21  
Source  
ID

18236  
Net  
Acceptance  
Criteria  
- 20%

23754 27354  
Net  
Acceptance  
Criteria  
+ 20%  
DN  
11.30.05

PRE USE CHECKS								POST USE CHECKS							
Date	Time	Audible Check	Alarm Check	BKG Counts	SRC Counts	Net Counts	Int	Date	Time	Audible Check	Alarm Check	BKG Counts	SRC Counts	Net Counts	Int
12-1-05	0824	SAT	N/A	208	22800	22592	ND	12-1-05	0730	SAT	N/A	155	22200	22045	DN
12-1-05	0730	SAT	N/A	155	22200	22045	DN	12-1-05	1240	SAT	N/A	143	21800	21657	DN
12-1-05	1240	SAT	N/A	143	21800	21657	DN	12-1-05	1420	SAT	N/A	165	19670	19505	DN
12-2-05	1000	SAT	N/A	247	22400	22153	DN	12-5-05	0530	SAT	N/A	216	23200	22984	ND
12-5-05	0530	SAT	N/A	216	23200	22984	ND								**
12-6-05	0605	SAT	N/A	281	23400	23119	DN	12-6-05	1515 1515 1515	SAT	N/A	181	22300	22119	DN
* 12-6-05	0945	SAT	N/A	118	19690	19572	DN	* 12-6-05	1330	SAT	N/A	197	21400	21203	VB
* 12-6-05	1330	SAT	N/A	197	21400	21203	VB	* 12-6-05	1445	SAT	N/A	134	21000	20866	DN
12-7-05	0615	SAT	N/A	234	23100	22866	DN								**
* 12-7-05	1415	SAT	N/A	146	26800	26654	DN	* 12-7-05	1700	SAT	N/A	152	19630	19478	DN
12-8-05	0700	SAT	N/A	225	22600	22325	DN								**
								A							
								N							

RP Supervisor Review: [Signature] (1)

(1) If any post-use source check failures occur, ensure that the condition is documented by a Condition Report.

\* Source check "SAT" 28° F per SAS.

\*\* Not Used.

\*\*\* Source check "SAT" 17° F per SAS.



PORTABLE/GAMMA SOURCE CHECK FORM

E-600  
Meter  
Type

HP100C  
Detector  
Type

51598  
Detector  
Number

E-21  
Source  
ID

19392  
Net  
Acceptance  
Criteria  
- 20%

29088  
Net  
Acceptance  
Criteria  
+ 20%

PRE USE CHECKS								POST USE CHECKS							
Date	Time	Audible Check	Alarm Check	BKG Counts	SRC Counts	Net Counts	Int	Date	Time	Audible Check	Alarm Check	BKG Counts	SRC Counts	Net Counts	Int
11-7-05	1000	SAT	N/A	271	23800	23529	DN	11-7-05	1235	SAT	N/A	182	21000	20818	DN
11-8-05	0715	SAT	N/A	276	23900	23624	DN	11-8-05	1535	SAT	N/A	229	20600	20371	DN
11-28-05	0850	SAT	N/A	205	22900	22695	DN								**
11-30-05	0817	SAT	N/A	200	23400	23200	US	12-1-05	0700	SAT	N/A	158	22500	22342	DN
12-1-05	0700	SAT	N/A	158	22500	22342	DN	12-1-05	1215	SAT	N/A	200	22200	22000	DN
12-1-05	1215	SAT	N/A	200	22200	22000	DN	12-1-05	1415	SAT	N/A	152	21700	21548	DN
12-2-05	1000	SAT	N/A	250	23600	23350	DN	12-3-05	1024	SAT	N/A	201	23700	23499	US
12-3-05	1024	SAT	N/A	201	23700	23499	US	12-5-05	0812	SAT	N/A	189	23600	23401	US
12-5-05	0812	SAT	N/A	189	23600	23401	US								**
12-6-05	0610	SAT	N/A	225	23700	23475	DN	12-6-05	1515	SAT	N/A	210	23300	23090	DN
* 12-6-05	0940	SAT	N/A	101	20000	19899	DN	* 12-6-05	1330	SAT	N/A	196	23400	23204	VB
* 12-6-05	1330	SAT	N/A	196	23400	23204	VB	* 12-6-05	1445	SAT	N/A	108	23400	23292	DN
12-7-05	0615	SAT	N/A	215	23400	23185	DN	12-8-05	0600	SAT	N/A	200	23200	23000	DN
12-8-05	0600	SAT	N/A	200	23200	23000	DN								**
12-8					22600		DN								

DN 12-13-05

DN 12-13-05

DN 12-13-05

RP Supervisor Review: Tina [Signature]

" If any post-use source check failures occur, ensure that the condition is documented by a Condition Report.

\* Source CK "SAT" 28° F per SAS.

\*\* Not Used.

