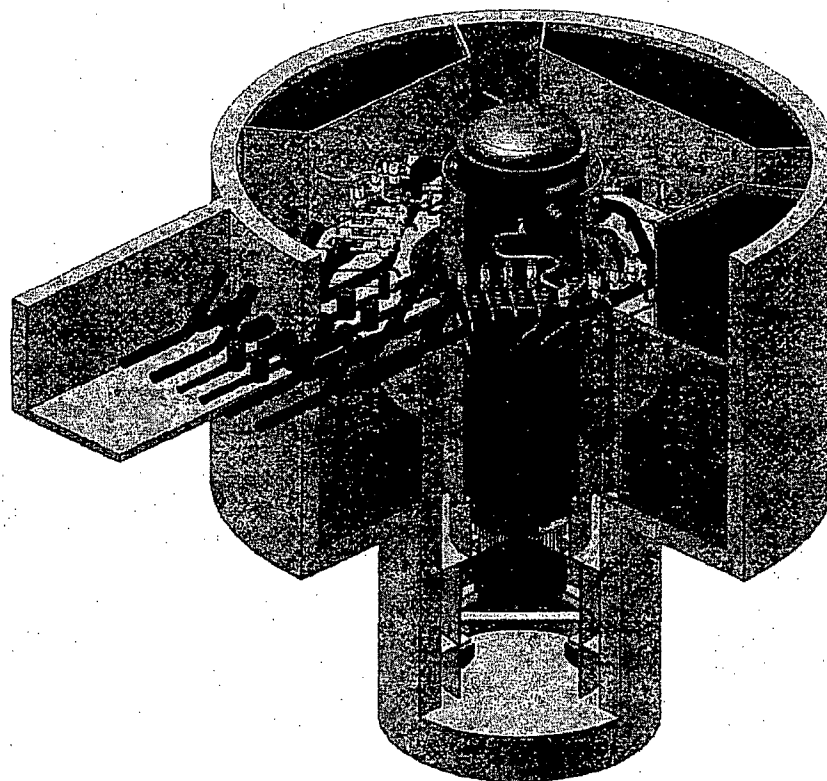


# ESBWR Technical Specifications

## DCD Chapter 16 & 16B, Rev 2



January 10, 2007

# Technical Specifications, Rev 2

## MEETING GOALS

- Overview of Significant Changes in Revision 2
- “N-2”<sup>(#)</sup> Changes to I&C and Electrical Specifications
- Overview of Issues Considered for Inclusion in Revision 3
- ESBWR Shutdown Condition Technical Specifications

(#) – Reference to Design Change Allowing any three Divisions to meet analyses assumptions + Single Failure

# Technical Specifications, Rev 2

## **Significant Changes in Revision 2**

- Two Types of Bracketed Items
  - DCD Open Item = “{ ... }”
  - COL Information Item = “[ ... ]”
- “N-2” Design Changes Addressed
- New TS 5.5.11, “Setpoint Control Program (SCP)”
  - Revised Channel Calibrations to Reference SCP
  - Bases Consistent with TSTF-493 Content
  - RIS 2006-017 Issues Addressed  
(details to be provided in RAI 7.1-23 Response)
- “Allowable Values” changed to “Setting Basis”

# Technical Specifications, Rev 2

## **Significant Changes in Revision 2**

- Response Time Testing Included in Actuation TS
  - Addresses Response of Entire Loop
  - Bases To Be Updated in Rev 3 (Per NUREG-1434)
- Post Accident Monitoring TS Reflects RG 1.97, r4
  - Type A Variables Only – [COLA May Remove Spec]
  - Revision 3 to Include “N-2” LCO Wording
- SRV LCO Clarified: Overpressure Function Only
  - safety “mode” vs safety “function”
  - ATWS Mitigation SRVs Not Included in Total Required

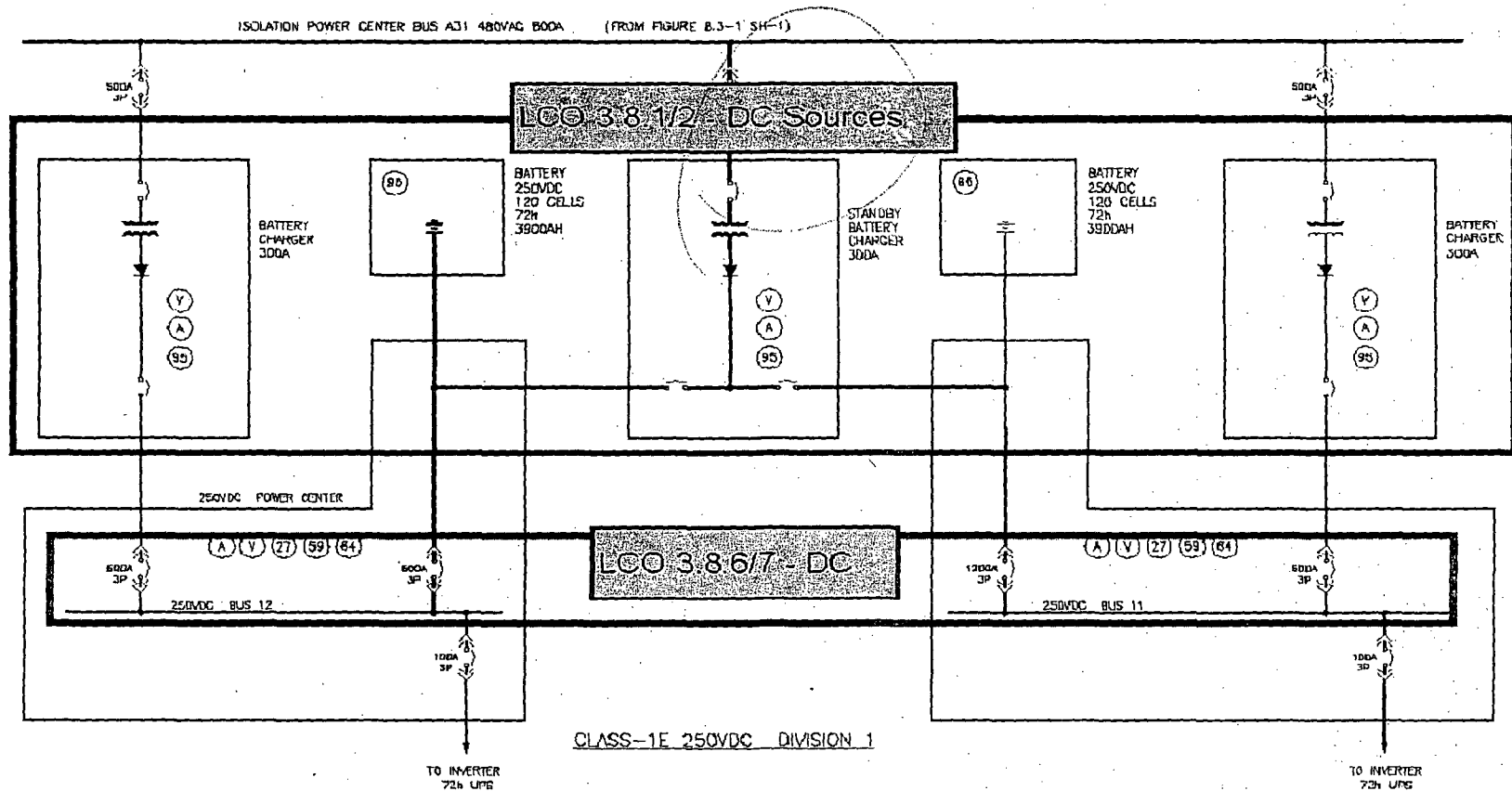
# Technical Specifications, Rev 2

## **Significant Changes in Revision 2**

- Wetwell-to-Drywell Vacuum Breaker Line Isolation Valves, and the Associated Actuation Instrumentation, Including the Proximity Switches
- DC Sources Specifications Revised
  - Address “N-2” Design
  - Eliminate 24-Hr Battery – All Batteries 72 Hr Service
  - Revise Inoperability Completion Times (RAI 16.2-82)
  - Did Not Apply “End State” TSTF Revisions

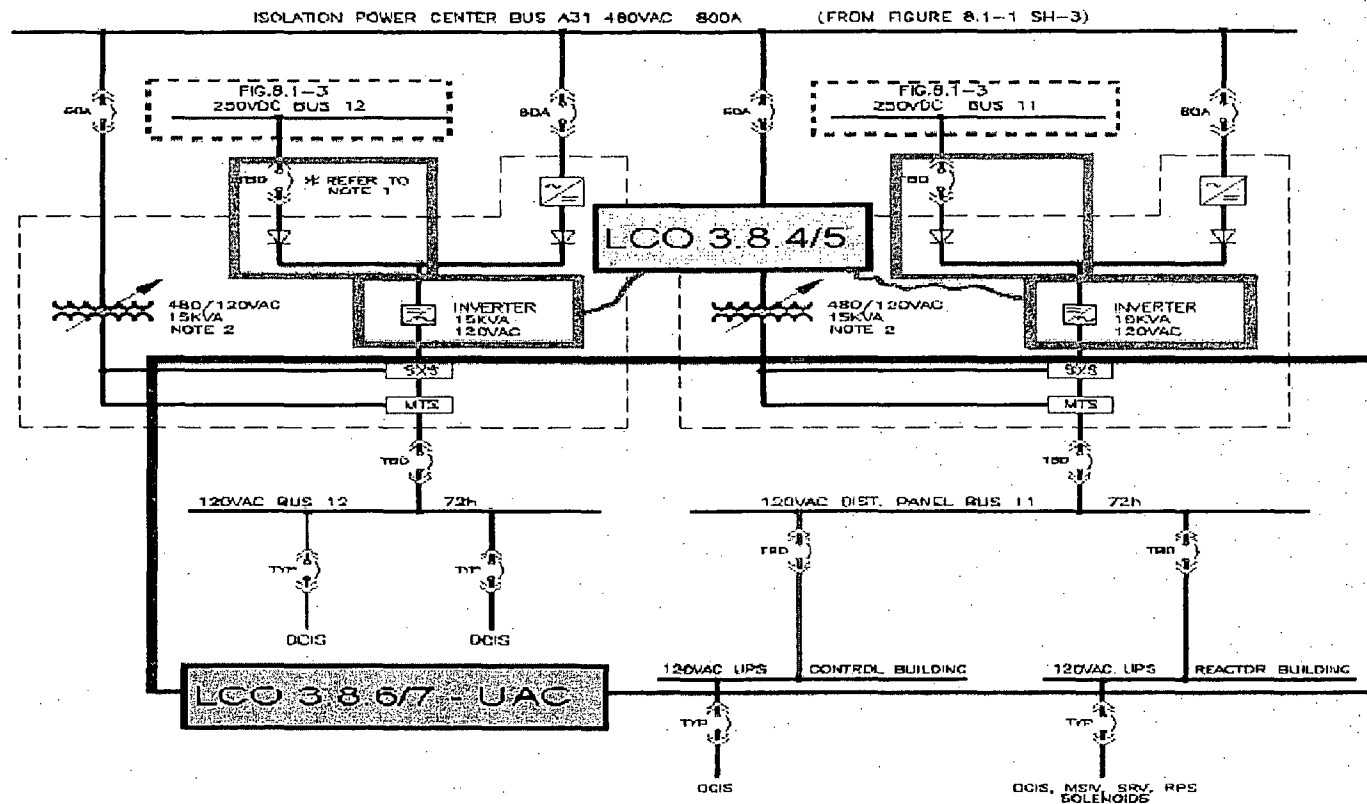
# Technical Specifications, Rev 2

- LCO "N-2" Statements [Portion of DCD Figure 8.1-3]



# Technical Specifications, Rev 2

- LCO "N-2" Statements [Portion of DCD Figure 8.1-4]



CLASS 1E UNINTERRUPTIBLE POWER SUPPLY DIVISION 1

# Technical Specifications, Rev 3 (Preliminary)

## **Issues Considered for Inclusion in Revision 3**

- New Specification Requirements (RAI 16.0-1)
  - SCRRI (Select Control Rod Run-In) Function
  - Float Valves for the Drywell Spillover Pipes
  - Main FW Pump Breakers & Actuation Instrumentation
- Generic Changes Post-NUREG-1434, REV 3.1 (RAI 16.0-3)
  - TSTF-448, Control Room Habitability – LCO 3.7.2 Impact
  - TSTF-360, DC Electrical Rewrite – DC Sources Impact
  - TSTF-497, Inservice Testing Program - SR 3.0.2 Application
- RWCU-SDC Isolation in Shutdown Conditions (RAI 16.2-45)
- Closing DCD Open Items



# Technical Specifications, Rev 2

## **Shutdown Cooling Technical Specifications**

- Isolation Condenser System (ICS) LCOs 3.5.4 & 3.5.5
  - Safety-Related Means in MODES 3, 4, 5
  - One Train Adequate When > 2 hr Post-Shutdown
- Gravity-Driven Cooling System (GDACS) LCOs 3.5.3
  - Safety-Related Means in MODES 5 & 6 (until flooded)

## **Other Shutdown Technical Specifications**

- Generally Consistent With NUREG-1434, Rev 3.1

# Technical Specifications - Summary

- Significant Changes Are Included in Revision 2
- DCD Open Items (vs. COL Information Items) Identified
- Scope of Revision 3 is Preliminary
- Shutdown Specifications Scope Generally Consistent with NUREG-1434, Rev 3.1