

EDO Principal Correspondence Control

FROM: DUE: / /

EDO CONTROL: G20061071
DOC DT: 12/19/06
FINAL REPLY:

Mary Lampert
Duxbury, Massachusetts

TO:

Chairman Klein

FOR SIGNATURE OF :

** GRN **

CRC NO: 06-0668

DESC:

Concerns the Pilgrim Nuclear Power Station

ROUTING:

Reyes
Virgilio
Kane
Silber
Johnson
Collins, RI

DATE: 12/30/06

ASSIGNED TO:

NRR

CONTACT:

Dyer

SPECIAL INSTRUCTIONS OR REMARKS:

Appropriate Action

Template: SECY-017

E-Russ: SECY-01

OFFICE OF THE SECRETARY
CORRESPONDENCE CONTROL TICKET

Date Printed: Dec 29, 2006 10:09

PAPER NUMBER: LTR-06-0668 LOGGING DATE: 12/28/2006

ACTION OFFICE: EDO

AUTHOR: Mary Lampert

AFFILIATION: MA

ADDRESSEE: Dale Klein

SUBJECT: Concerns the Pilgrim nuclear power station

ACTION: Appropriate

DISTRIBUTION:

LETTER DATE: 12/19/2006

ACKNOWLEDGED No

SPECIAL HANDLING:

Made publicly available via ADAMS via EDO/DPC

NOTES:

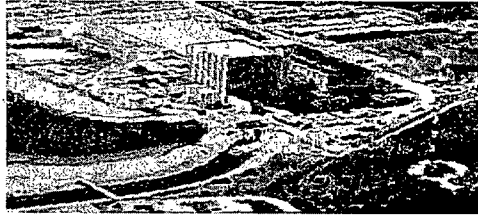
FILE LOCATION: ADAMS

DATE DUE:

DATE SIGNED:

EDO --G20061071

Pilgrim Watch



148 Washington St., Duxbury MA 02332

Tel 781-934-0389 Fax 781-934-5579 E-Mail Mary.Lampert@comcast.net

December 19, 2006

Chairman Dale E. Klein
United States Nuclear Regulatory Commission
Washington DC 20555

CHAIRMAN REC'D
06 DEC 26 PM 3:45

Dear Chairman Klein.

This past October the Nuclear Regulatory Commission announced that the Seabrook Station had been chosen as one of six nuclear power plants nationwide to be part of a study of the consequences of an accident that would release radioactivity into the atmosphere. The other nuclear plants being reviewed are Diablo Canyon in California; Duane Arnold in Iowa; Fermi in Michigan; Peach Bottom in Pennsylvania; and Salem in New Jersey. The study is expected to take three years.

I understand from your press release that "The sites were picked based on the demographics of the surrounding communities and the type of containment used," according Scott Brunnell of the Nuclear Regulatory Commission. While this study could be invaluable to better understand how accidents could occur within containment buildings; how containment could be breached; how radioactive plumes could travel; and how effective emergency planning would be, I am concerned that the Pilgrim Nuclear Power Station in Massachusetts was not chosen.

Pilgrim is located in Plymouth, Massachusetts – "America's Hometown." Its location has considerable symbolic value increasing the probability that it would be chosen as a target; and Harvard and MIT are nearby and known as valuable institutions of higher learning throughout the world. Pilgrim has one mile of continuous shoreline frontage on Cape Cod Bay making it especially vulnerable to an attack

from the water. Numerous secondary airports are close by- their security is minimal - less than <5 minutes from Hyannis to Pilgrim. We know that a small plane loaded with explosives could accomplish the task, easily. Last, Pilgrim is a BWR, GE Mark I containment, with a densely packed spent fuel pool outside primary containment, vulnerable from three sides.

Estimates of Costs and Latent Cancers Following Releases of Cesium-137 from Pilgrim's Spent-Fuel Pool¹

	10% release C-137	100% release C-137
Cost (billions)	\$105-\$175 billion	\$342-\$488 Billion
Latent Cancers	8,000	24,000

Entergy applied to extend Pilgrim's license, January 2006. Including Pilgrim in the study of the consequences of an accident while the license extension is under review would have made sense. Information gained from NRC's study clearly would pertain to the Severe Accident Mitigation Analysis required in the re-licensing review process.

We are concerned that this particular nuclear plant directly on our vulnerable East Coast is not a priority, but has been relegated to eventual review - this is not acceptable to our community.

Sincerely,



Mary Lampert
Pilgrim Watch, Director
148 Washington Street
Duxbury, MA 02332

¹ Source: The Massachusetts Attorney General's Request for a Hearing and Petition for Leave to Intervene With respect to Entergy Nuclear Operations Inc.'s Application for Renewal of the Pilgrim Nuclear Power Plants Operating License and Petition for Backfit Order Requiring New Design features to Protect Against Spent Fuel Pool Accidents, Docket No. 50-293, May 26, 2006 includes a Report to The Massachusetts Attorney General On The Potential Consequences Of A Spent Fuel Pool Fire At The Pilgrim Or Vermont Yankee Nuclear Plant, Jan Beyea, PhD., May 25, 2006.