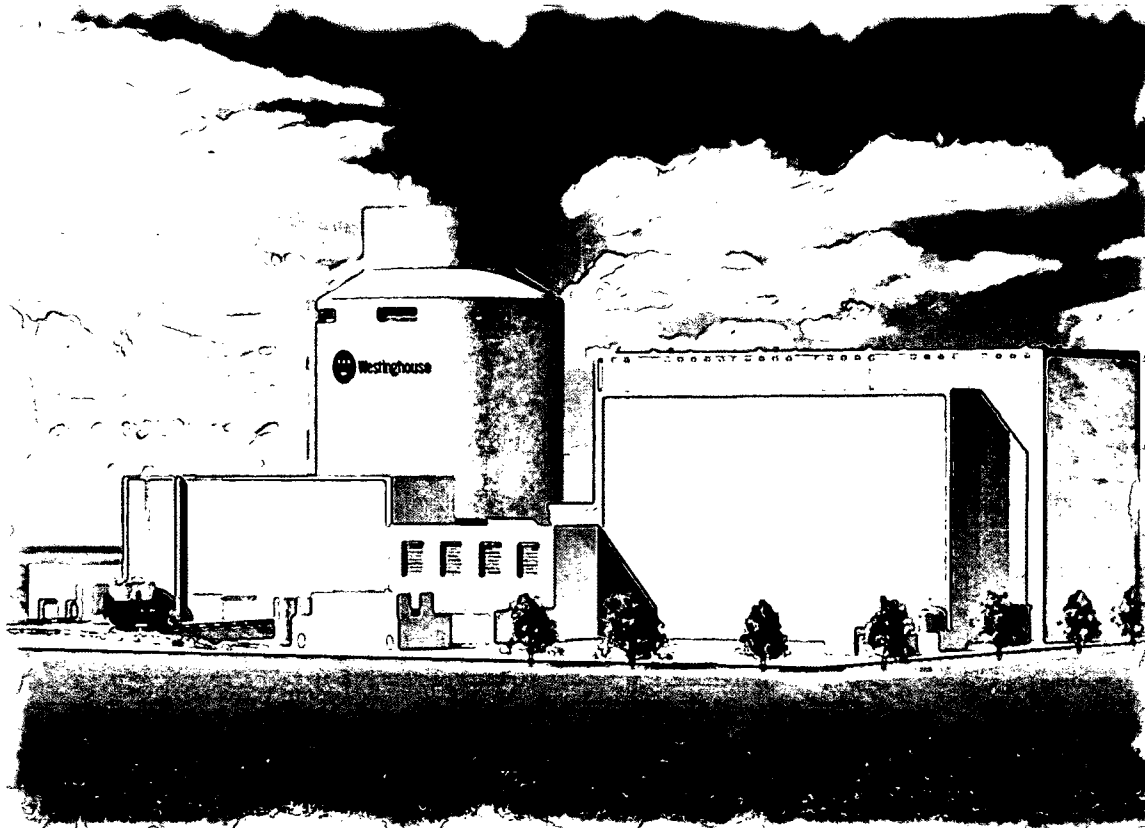


# AP1000 Nuclear Island Extension to Soils

December 12, 2006



Lee Tunon-Sanjur

AP600 & AP1000 projects

412-374-6475 - [tunonslj@westinghouse.com](mailto:tunonslj@westinghouse.com)

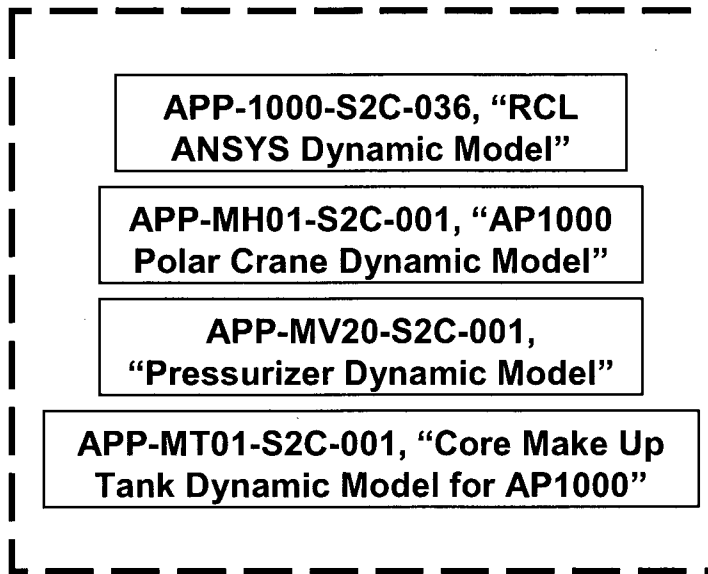
**Toshiba**



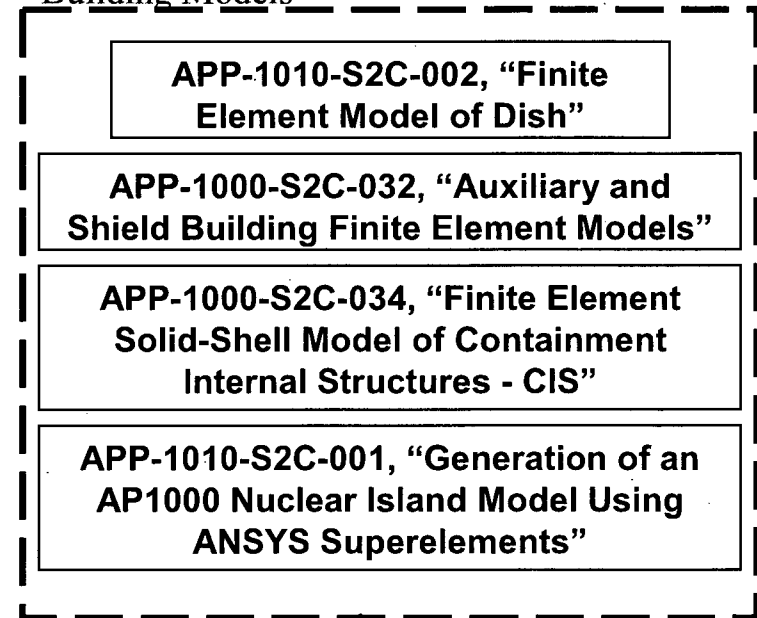


# Hard Rock Model (NI10) Validation

## Equipment Models



## Building Models

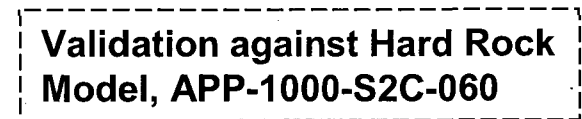
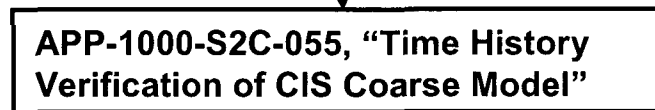
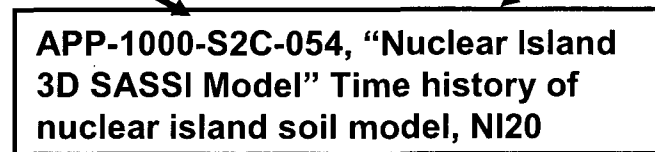
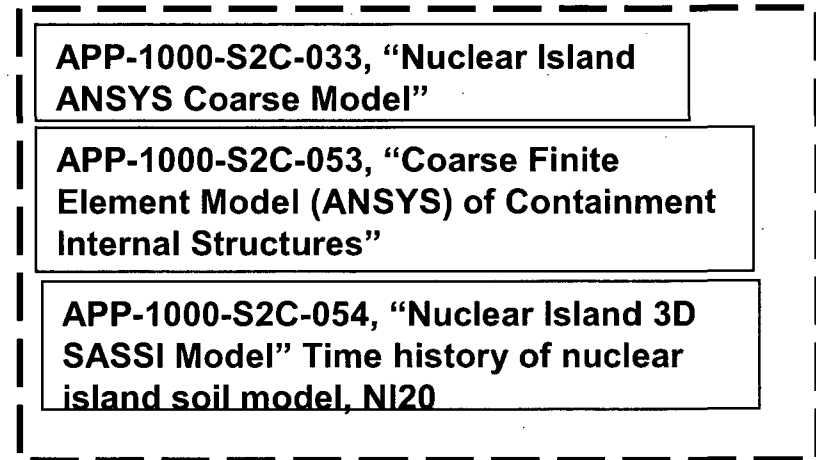
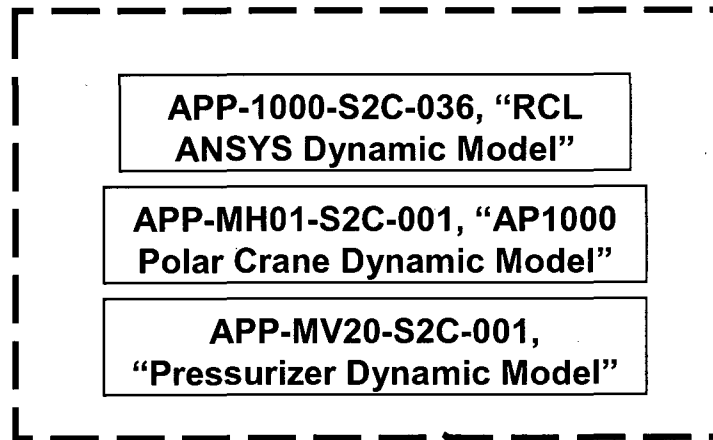


APP-1000-S2C-060, "Time History Analysis of Nuclear Island Shell Model"

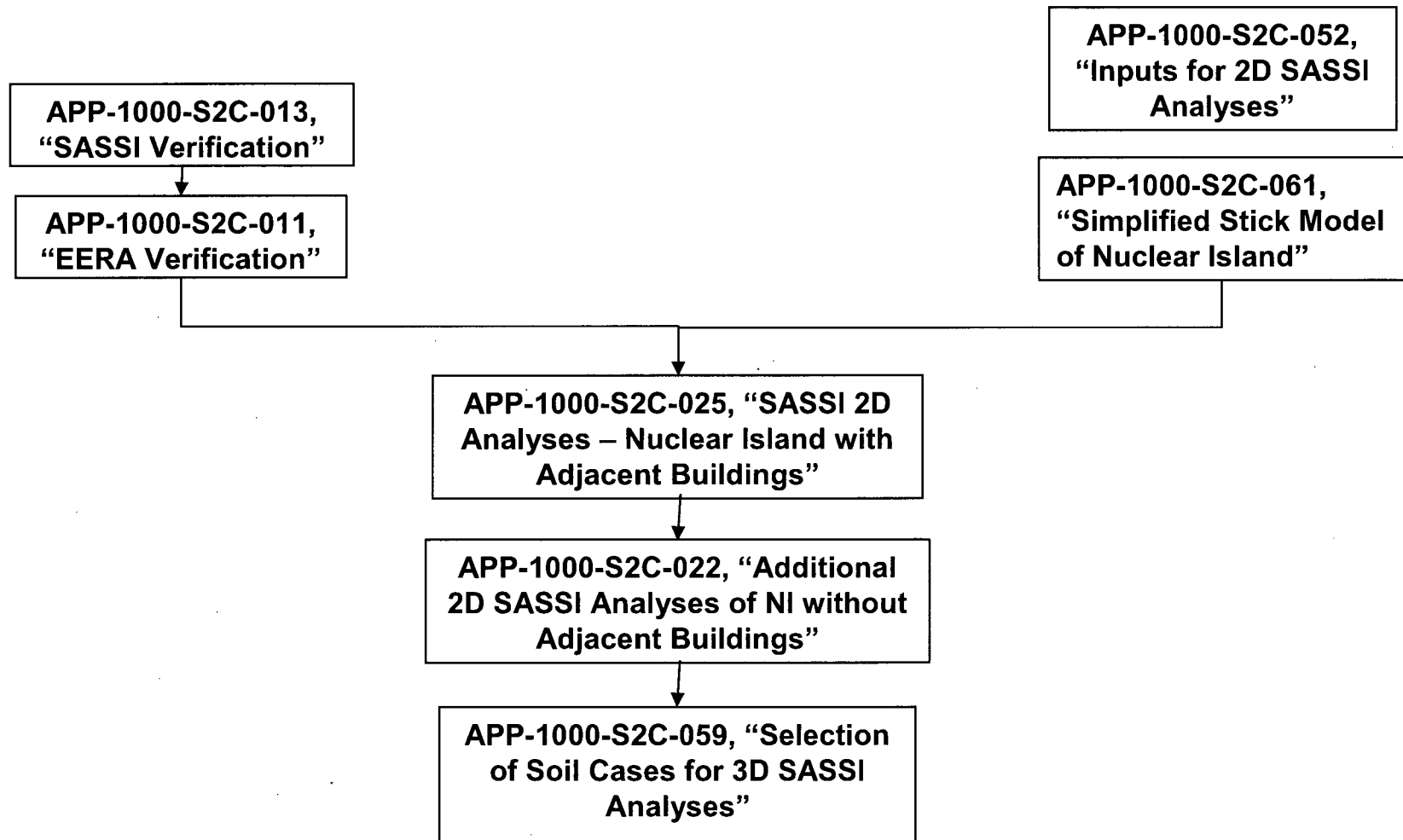
Validation against DCD Stick Model

# Soil Model (NI20) Validation

## Equipment Models



## Selection of Soil Cases based on 2D Parametric Studies



**APP-1000-S2C-015, "SSI  
Analysis for Firm Rock Profile"**

**APP-1000-S2C-016, "SSI  
Analysis for Upper Bound Soft to  
Medium Soil Profile"**

**APP-1000-S2C-017, "SSI  
Analysis for Soft to Medium Soil  
Profile"**

# Floor Response Spectra and Building Forces Development

