



# ***PILGRIM NUCLEAR POWER STATION***

December 6, 2006





# AGENDA

- ◆ **Opening Remarks** **M. Balduzzi**
- ◆ **Plant Performance Overview** **K. Bronson**
- ◆ **INPO Assessment** **M. Balduzzi**
- ◆ **Refueling Outage** **S. Bethay**
- ◆ **Open Discussion**



# Opening Remarks

M. Balduzzi  
Site Vice President

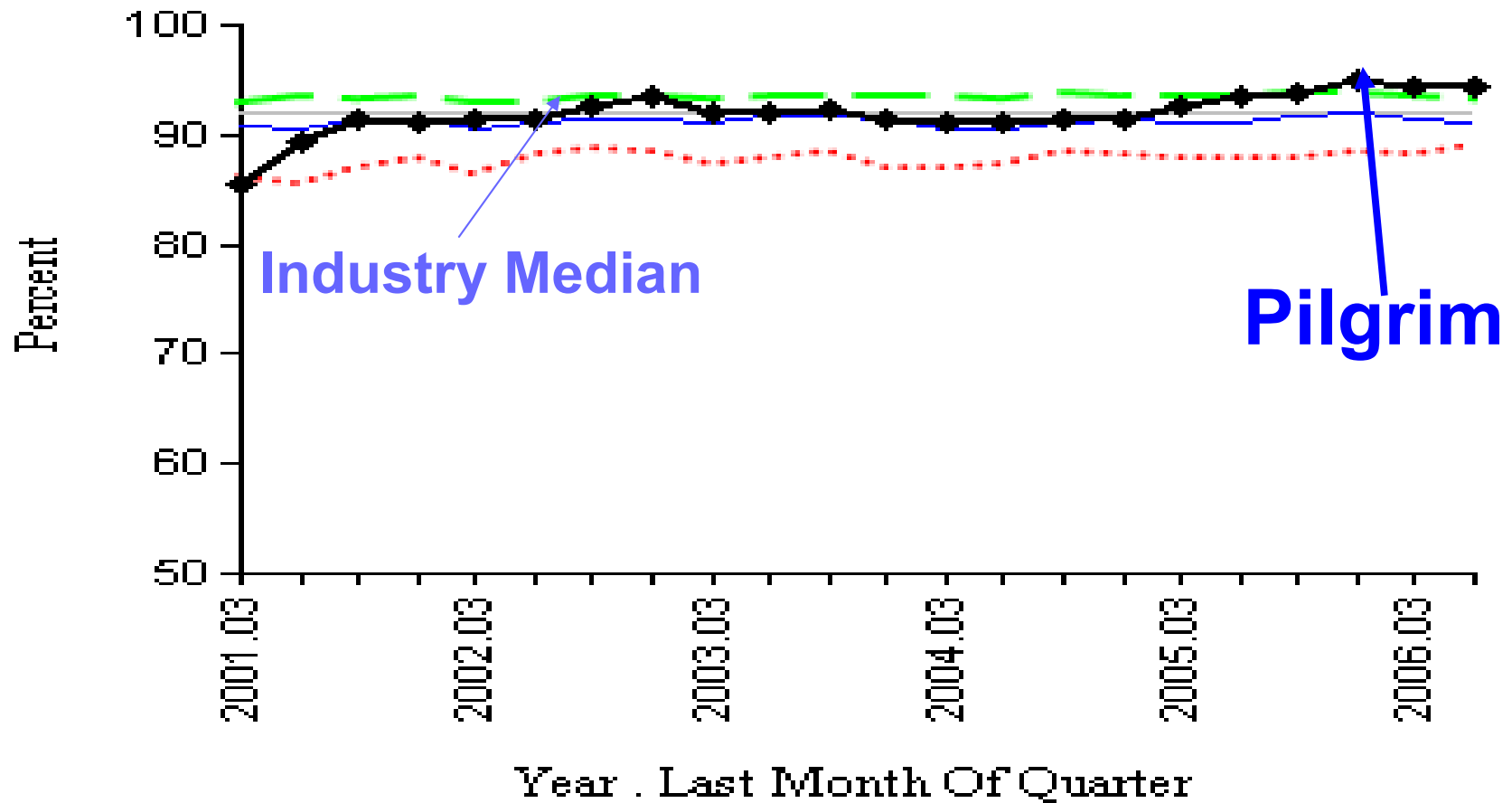


# Plant Performance

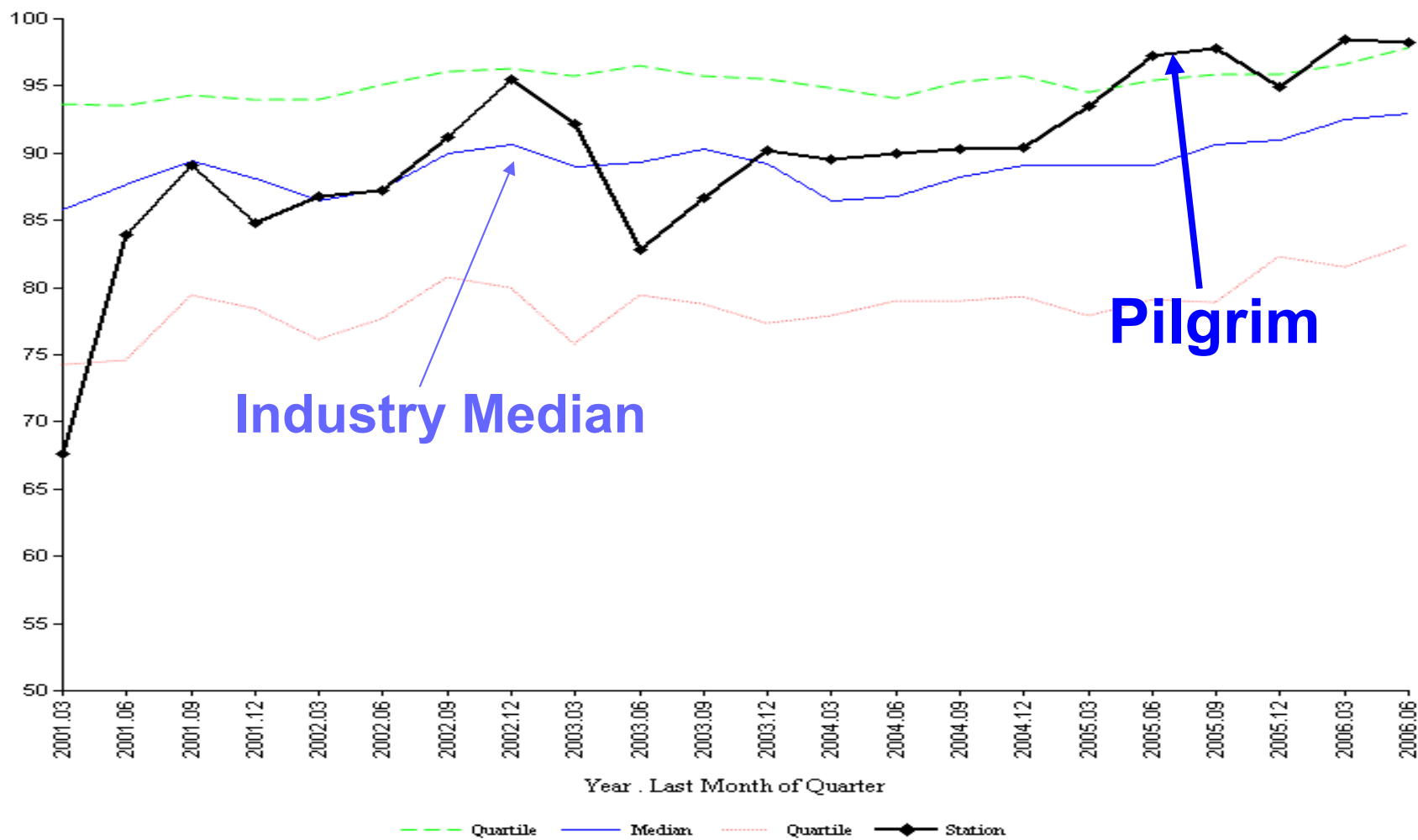
- Plant Operation
- INPO Index
- Maintenance Backlogs
- Radiation Exposure
- Human Performance
- License Renewal

# Plant Operation Capacity Factor

24 Month Period



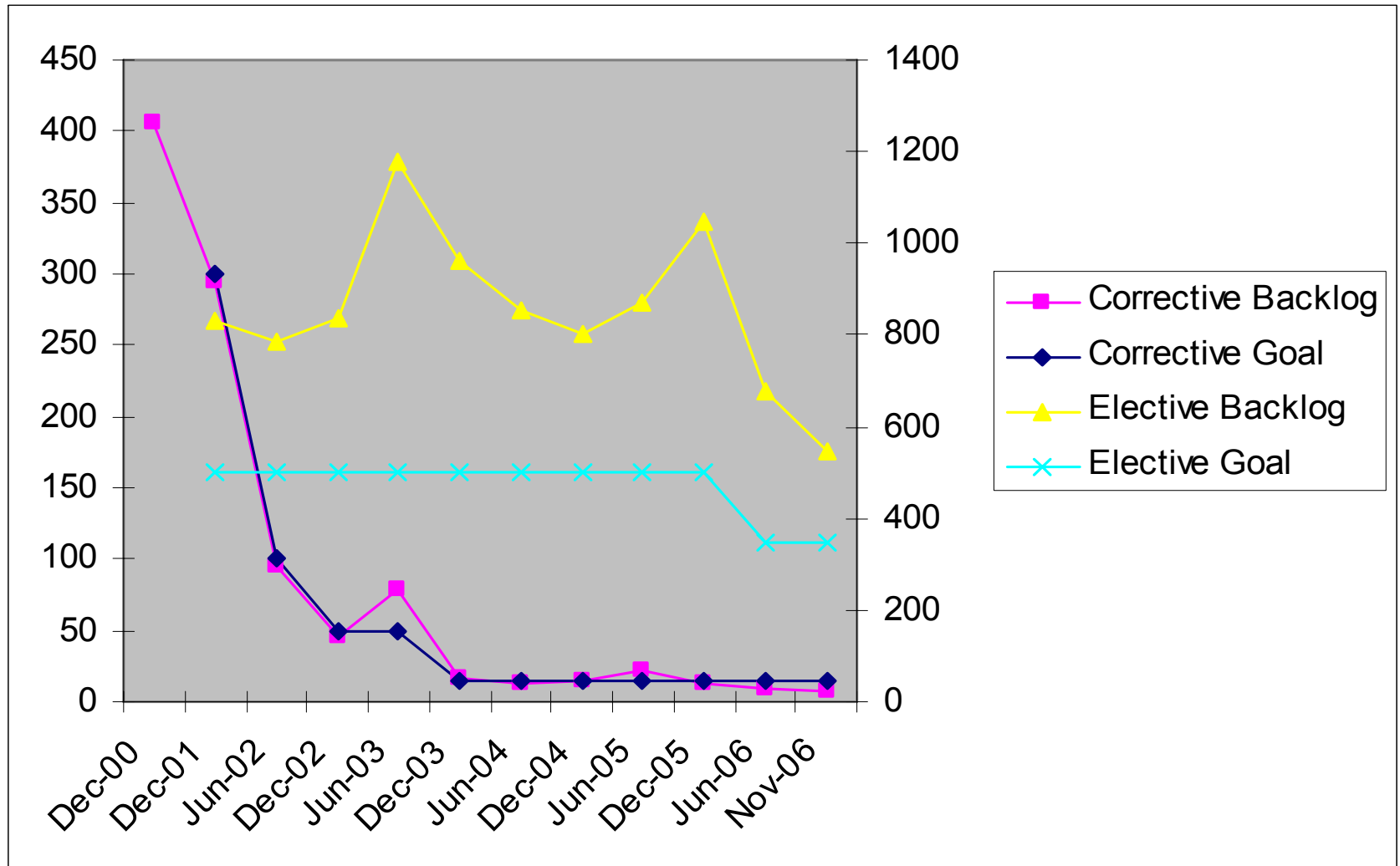
# INPO Index



Pilgrim

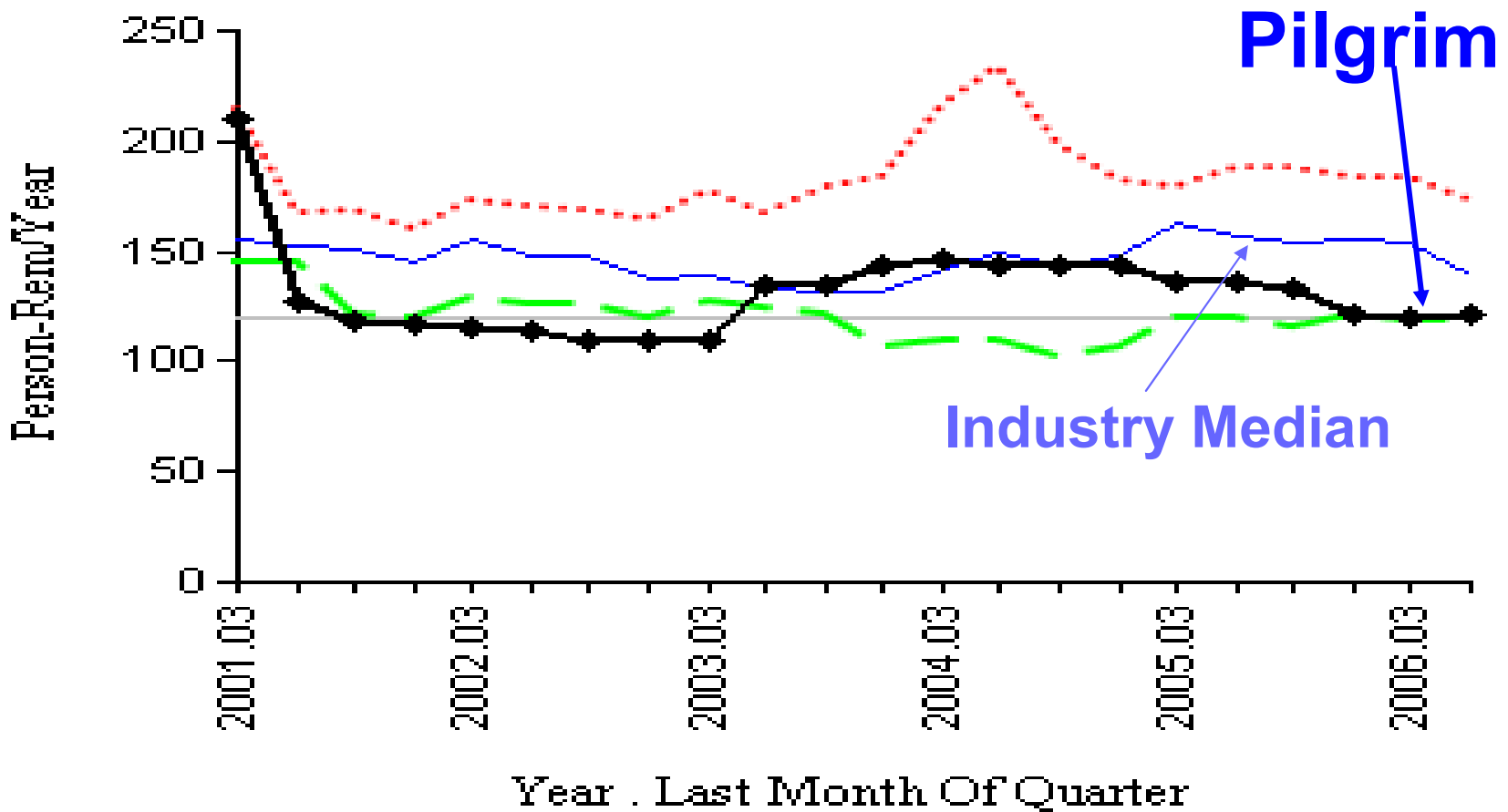
Industry Median

# Maintenance Backlogs



# Radiation Exposure

24 Month Period







# Human Performance

- ◆ Organizational alignment of Safety & Human Performance
- ◆ Coaching and Oversight
  - Infrequently Performed Tests & Evolutions (IPTE's) identified and assigned management oversight
  - Focused Crew Assessments
  - Host Coaching of supplemental workers
- ◆ Improvement areas
  - Post-job reviews
    - Latent Organizational Weaknesses “spotlight” focus



# License Renewal

- Submitted January 2006
- NRR Audits Complete
- 2 Follow-up RAIs in progress
- Region Inspection Closeout Ongoing
- 2 Contentions Admitted
- Draft SEIS end of week



# INPO Evaluation



# Refueling Outage Major Projects

- Recirculation Pump/Motor Rebuild
- Core Shroud Tie Rod Repair
- CR Drive Replacement
- RPV Bottom Head Drain Replacement
- Feedpump Motor Replacement
- Condensate Pump Replacement
- Feedwater Regulating Valve Actuators & Discs
- Noble Metals



# Open Discussion

M. Balduzzi  
Site Vice President