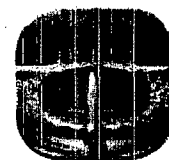
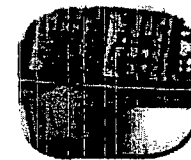
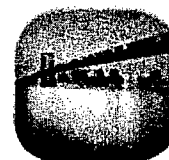


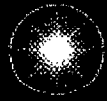
Constellation Energy

Nine Mile Point 2 Extended Power Uprate

NRC Meeting
September 26, 2006

The way energy works.





Agenda

- Meeting Objectives
- Background
- EPU Project Organization
- Project Overview
- Preliminary Timeline
- Stakeholder Interfaces
- Project Submittal
- Related Licensing Actions and Overlaps
- Summary
- Questions



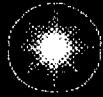
Meeting Objectives

- CEG's plan and timeline for a constant pressure extended power uprate at NMP2
- Communication between the NMP2 Uprate project team and the NRC
- CEG's benchmarking relative to recent submittals

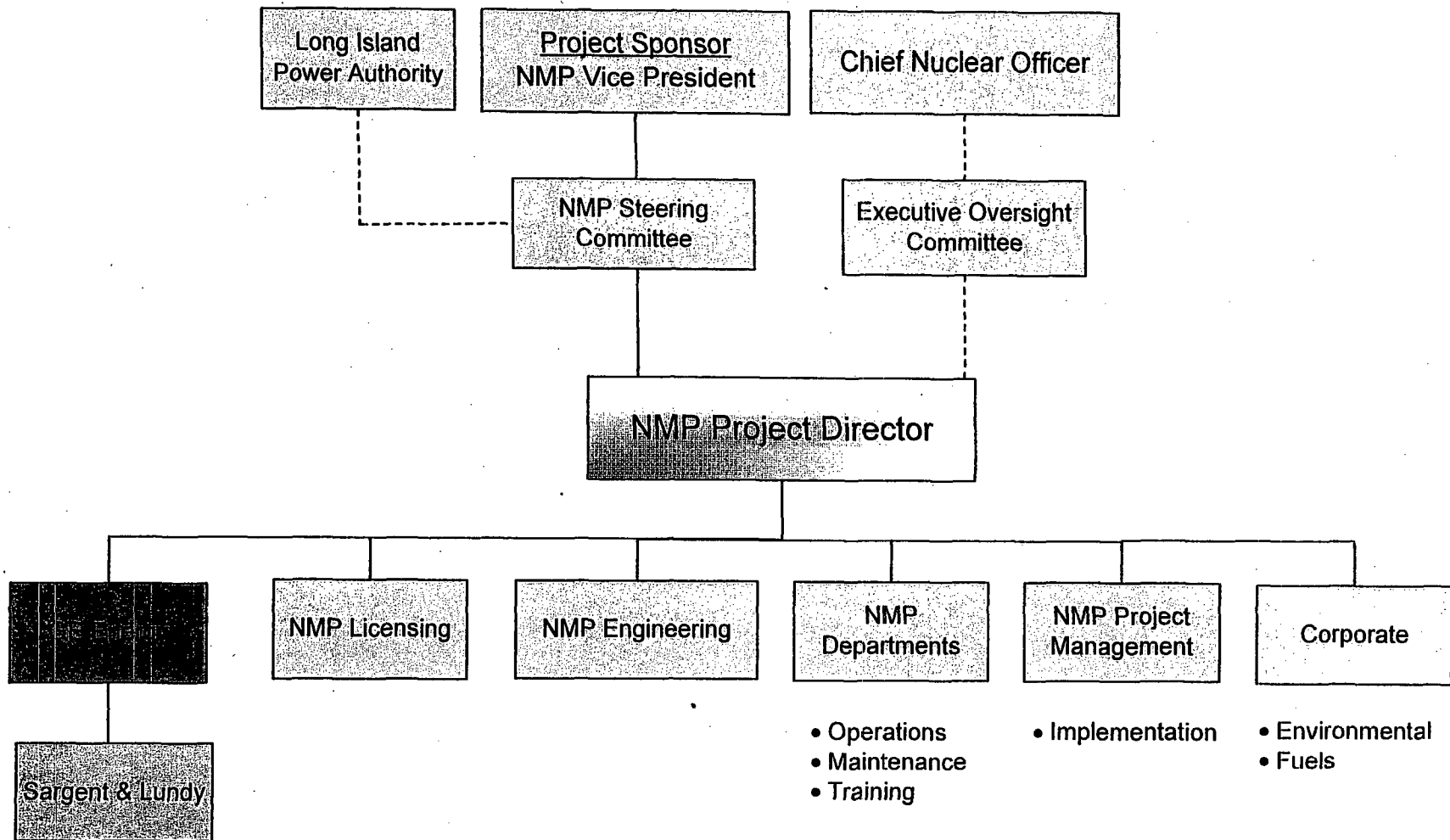


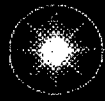
Background

- **Nine Mile Point Unit 2**
 - **GE BWR 5 Operating License in 1987 - 3323 MWt**
 - **In 1995, uprated to 105% OLTP - 3467 MWt**
 - **Extended Power Uprate to 120% OLTP - 3988 MWt**



EPU Project Organization



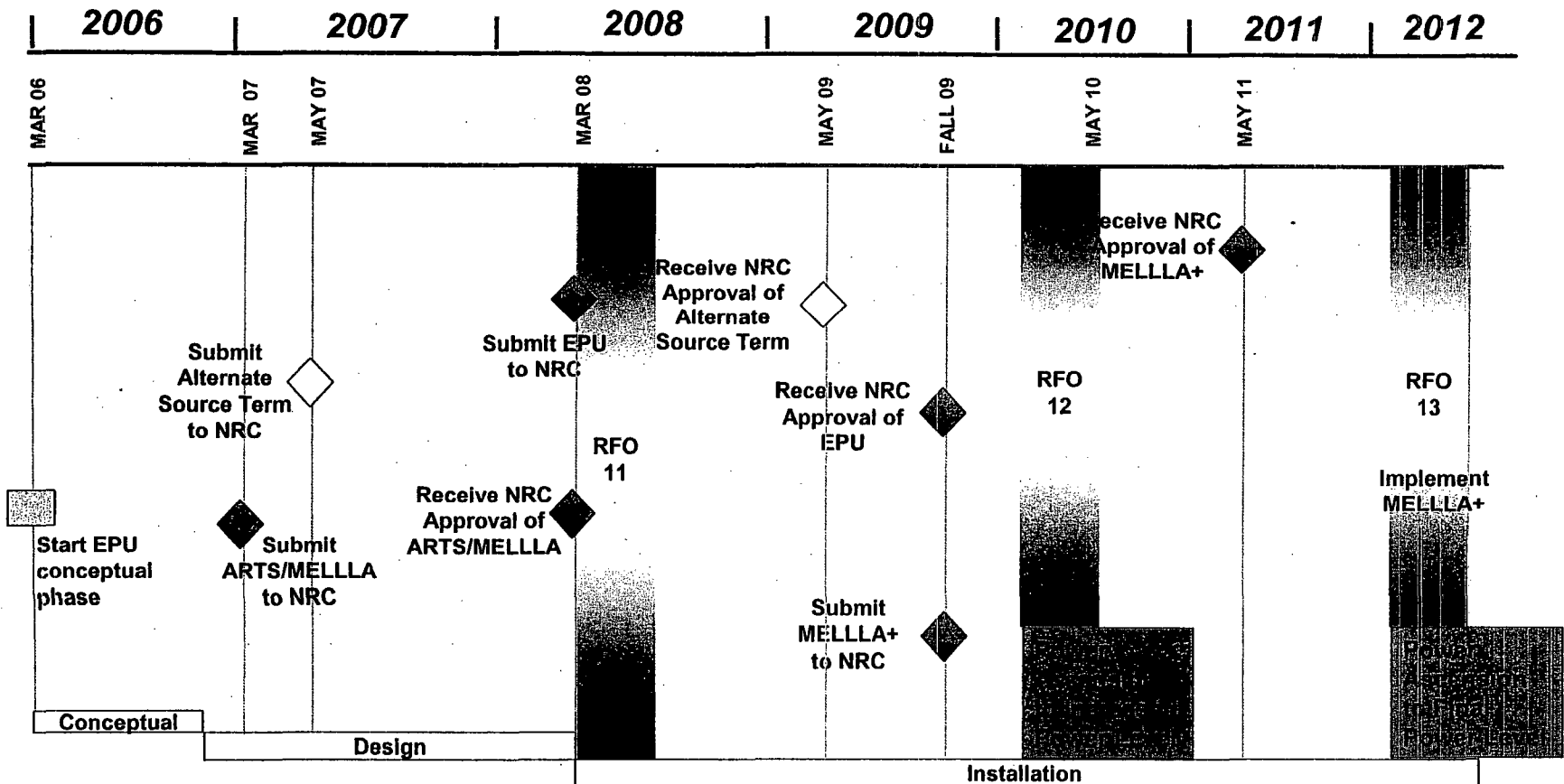


Project Overview

- Potential major equipment modifications or replacements
 - High pressure turbine replacement
 - Feedwater/Condensate system modifications
 - Capacitor banks
- Steam dryer evaluations
- Vibration Monitoring
- Phased increases in power level
- ARTS/MELLLA
- MELLLA+

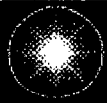


Preliminary Timeline



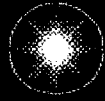
- Completion of Engineering
- NRC Submittal for ARTS/MELLLA
- NRC Review and Approval ARTS/MELLLA

- ARTS/MELLLA Installation (RFO11)
- EPU Modification Installation (RFO11/RFO12/RFO13)
- MELLLA+ Implementation (RFO13)
- Training
- Power Ascension Testing



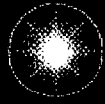
Stakeholder Interfaces

- Stakeholder communications
 - Open communication and dialogue with project stakeholders
 - NRC
 - NYS Independent System Operator (NYISO)
 - Transmission owners
 - Long Island Power Authority (LIPA)
 - NYS Department of Environmental Conservation (DEC)
 - City and County officials



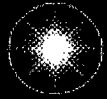
Project Submittal

- Use of RS-001, Revision 0 “Review Standard for Extended Power Uprates”
- Technical rigor
 - Independent Reviews
 - Vendor Audit Process
- Industry lessons learned addressed
 - Steam Dryer
 - Vibration monitoring
- Ensure current issues understood



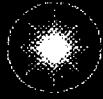
Related License Submittals and Overlaps

- ARTS/MELLLA
 - Alternate Source Term (Control Room Habitability)
 - Setpoint Methodology
 - Reactor Vessel Pressure/Temperature Limits
 - MELLLA+
-
- Separate pre-submittal teleconferences and meetings will be conducted as needed



Summary

- Constellation Energy is committed to safely and reliably implement this power uprate
- Additional meetings are anticipated to maintain close communication



Constellation Energy

The way energy **works.**[™]

Questions?
