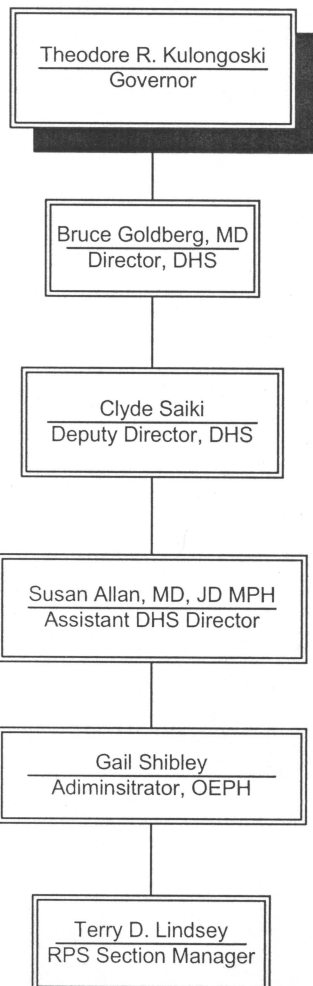


Supervisory Organizational Chart from RPS Section Manager to the Governor of Oregon

7/26/06



**Oregon State Public Health
Environmental Public Health**

Gail R. Shibley
Administrator

Jeff Carlson
*Interim Program Support
Manager*

Tara Robinson
Office Manager

Hari Berhe
*Operations & Policy
Analyst*

Maria Smith
*Bilingual Receptionist
Office Specialist 1*

Bob Patterson
*Receptionist
Office Specialist 1*

Michelle Riley
*Executive Assistant
Exec. Support Specialist 2*

Angela Wilson
Special Project Coordinator

**Radiation Protection
Services**

Terry Lindsey
Section Manager

- Radioactive Materials
- X-Ray Licensing Safety
- Tanning Facilities Safety
- Emergency Response

**Environmental
Toxicology**

Rick Leiker
Section Manager

- Toxicology
- Lead-Based Paint Elimination
- Clandestine Drug Lab Clean-up
- Swim/Beach Monitorin
- Adult Blod Lead Surveillance
- Childhood Lead Poisoning Prevention

**Food, Pools, & Lodging
Health & Safety**

Eric Pippert
Section Manager

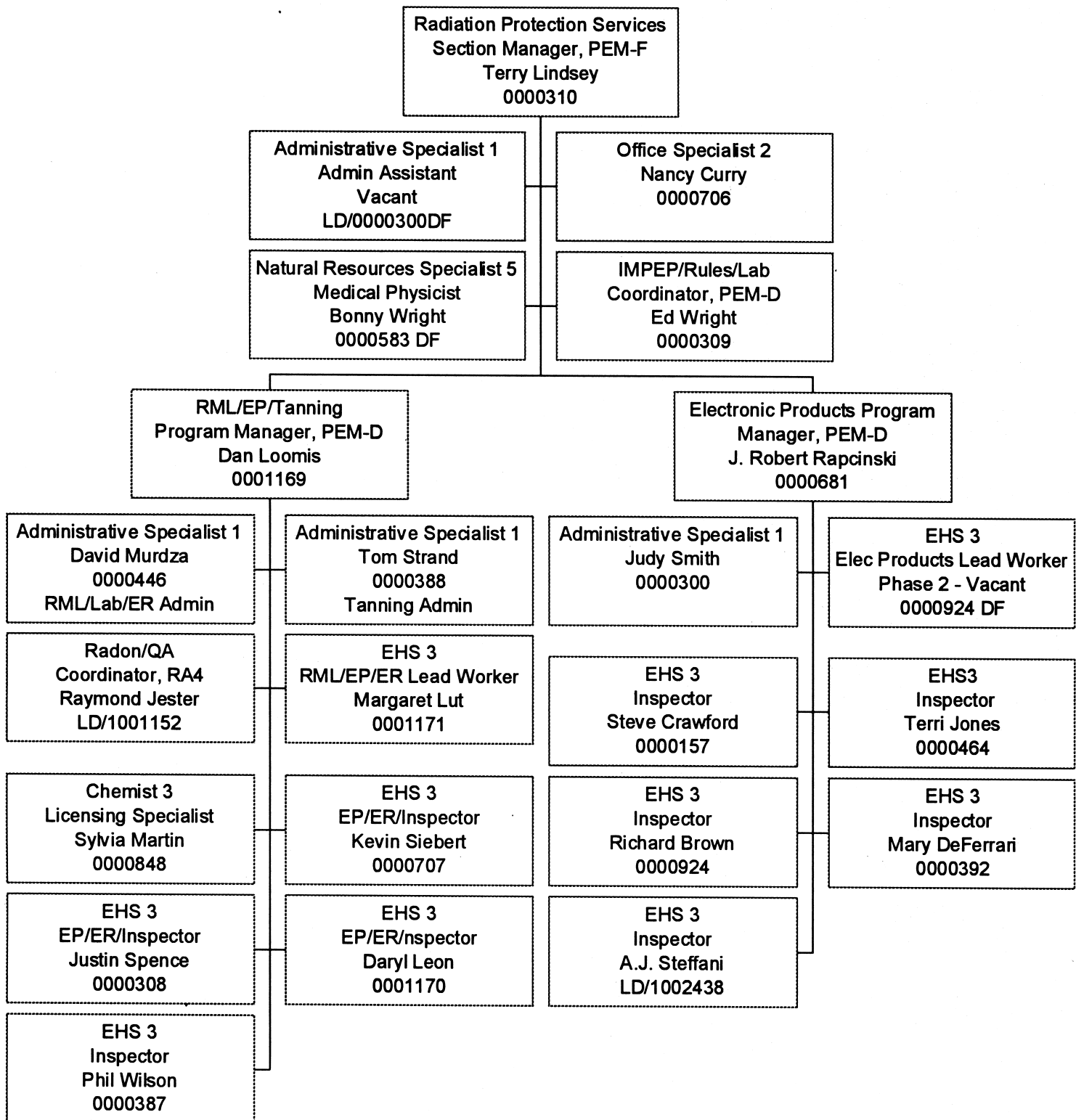
- Restaurant Sanitation
- Tourist Facilities Sanitation
- Field Services
- Swimming Pool Safety

**Drinking Water
Program**

Dave Leland
Section Manager

- Monitoring & Compliance Assurance
- Technical Services
- Protection & Development

**RPS Reorganization - Phase 1
May 2006**



Oregon Radiation Protection Services
Radioactive Materials Licensing Staffing Plan

<u>Name</u>	<u>Position</u>	<u>Area of Effort</u>	<u>FTE%</u>
Terry D. Lindsey	PEM F	RPS Section Manager/ Program Director	60% RML
Edwin L. Wright	PEM D	Retiring RML Manager/Rules Coord	100%
(Ed Wright will be retiring January 2007 - Danny Loomis has been appointed as Acting Manager for transition to new management structure with one less PEM D level position)			
Danny D. Loomis	PEM D	Interim Acting RML Manager	50%+50% EP
(Danny Loomis is currently training professional staff to handle radiological preparedness training functions to transition to full time supervisory management of programs.)			
Margaret Lut	EHS 3	Lead Worker RML/Tanning+MQSA	75%/25%
(Margaret selected as first Lead Worker for phase 1 restructure of programs and primary coordinator for phased program for cross-training of inspection staff)			
Raymond A. Jester	RA 4	Radon/QA Coordinator	50%/50%
(Ray is the State Radon Coordinator and QA Coordinator for RPS data systems + RERT)			
Sylvia L. Martin	Chemist 3	Primary License Reviewer/Lab QA	100%
(Sylvia has provided training for RML inspection staff to handle Analytical Lab functions)			
Justin L. Spence	EHS 3	RML Inspector/Peer Review/Lab	100%
(Justin is the primary Industrial Radiography inspector and is an RERT member)			
Kevin H. Siebert	EHS 3	RML Inspector/Peer Review/Trainer	75%/25%
(Kevin is the primary Medical licensees inspector and is an RERT member)			
Daryl L. Leon	EHS 3	RML Inspector/Peer Review/Trainer	75%/25%
(Daryl is the primary Industrial and Portable gauges inspector and is an RERT member)			
David L. Murdza	AS 1	Licensing/Admin Assistant	100%

Note: The Radiation Protection Services Section is currently undergoing a restructuring that is based upon an extensive all staff Top2Bottom program review. This will be accomplished in a phased transition to move to a Field Operations Unit and Administrative/Licensing Unit model that includes a dynamic cross-training program for all inspection staff in both plan phases.

As part of the first phase of this plan, a Lead Worker has been assigned to the current RML and Tanning program areas to handle increased responsibilities for program oversight. In the second phase of the plan beginning next year, a second Lead Worker will be assigned to the Field Operations Unit with one Lead Worker each assigned to the Electronic Products (X-Ray and Tanning) Program and Radioactive Materials Licensing Program.

The Emergency Preparedness & Response, Radiological Training, Administrative and Licensing Unit will also be established with an extensive cross-training program for licensing and administrative responsibilities. This phase will also include new assignments for technical staff to assist with Emergency Preparedness planning, exercise design, incident response and training requirements.

Attachment 4

Oregon Radiation Protection Services Staff in RML Program not currently meeting full requirements for Licensing Review CORE training:

Daryl A. Leon - Needs to complete the following courses:

H304 (Diagnostic and Therapeutic Nuclear Medicine)

H313 (Teletherapy and Brachytherapy)

Justin I. Spence - Needs to complete the following courses:

H308 (Transportation of RAM)

H313 (Teletherapy and Brachytherapy)

Kevin H. Siebert - Needs to complete the following courses:

H308 (Transportation of RAM)

We are also sending David L. Murdza and Margaret Lut to the Licensing course for training as David processes all of our administrative licensing actions and Margaret peer reviews all licensing and inspection actions in her new role as Lead Worker in the RML and Tanning programs.

Oregon Radiation Protection Services Staff in RML Program not currently meeting full requirements for Inspector CORE training:

Daryl A. Leon - Needs to complete the following courses:

G205 (Root Cause/Incident Investigation)

H304 (Diagnostic and Therapeutic Nuclear Medicine)

H313 (Teletherapy and Brachytherapy)

Justin I. Spence - Needs to complete the following courses:

H308 (Transportation of RAM)

H313 (Teletherapy and Brachytherapy)

Kevin H. Siebert - Needs to complete the following courses:

G205 (Root Cause/Incident Investigation)

H308 (Transportation of RAM)

**Department of Human Services
Public Health Division
Office of Environmental Public Health
Radiation Protection Services
RADIATION ADVISORY COMMITTEE (RAC)
Members**

			Appointment Expiration Date
1.	Gary F. Gates, M.D. St. Vincent Hospital 9205 SW Barnes Rd. Portland, OR 97225 gary.gates@providence.org	Position #6001 503-216-2619	December 31, 2007
2.	Paul H. Brown, Ph.D. OHSU Diagnostic Radiology (L340) 3181 Sam Jackson Park Rd. Portland, OR 97239 brownp@ohsu.edu	Position #6002 503-494-1214	December 31, 2008
3.	Jack Higginbotham, Ph.D. Oregon State University 130 Radiation Center Corvallis, OR 97331 jack.higginbotham@oregonstate.edu	Position #6603 (541) 737-9088	December 31, 2006
4.	Randy McNeill SCA Sun Systems, Inc. 14915 SW 72 nd Ave. Tigard, OR 97224 randy@scasun.com	Position #6004 503-643-9852	December 31, 2006
5.	Lawrence F. Winans, Ph.D. 13215 SW 31 Street Beaverton, OR 97008 winans@teleport.com	Position #6005 503-643-9852	December 31, 2007
6.	Edgar J. Riggs TDY Industries, Inc. dba Wah Chang 2951 East Front St. Bldg. 200 Albany, OR 97321 ed.riggs@wahchang.com	Position #6006 (541)-327-1716	December 31, 2007

- | | | | |
|----|---|----------------------------------|-------------------|
| 7. | Donald S. Elting, RSO
University of Oregon
5224 University St.
Eugene, OR 97403-5224
<u>delting@uoregon.edu</u> | Position #6007
(541) 346-3192 | December 31, 2008 |
| | | | |
| 8. | Douglas A. Barnett, D.M.D.
OHSU School of Dentistry
Division of Oral Radiology
611 SW Campus Drive, Rm 123A
Portland, OR 97239
<u>barnettd@ohsu.edu</u> | Position #6008
503-494-8790 | December 31, 2008 |

ATTACHMENT 6

CURRENT INSTRUMENT INFORMATION							
MFG	TYPE	MODEL	S/N	CAL DATE	CAL DUE	USER	LOCATION
DOS. CORP	GM	3034-2	123285	3/15/2006	3/15/2007	(n/a)	Rm 285, cabinet #2
DOS. CORP	GM	3500	931091	1/31/2006	1/31/2007	(n/a)	Rm 285, cabinet #2
DOS. CORP	GM	3500	941091	6/14/2006	6/14/2007	(n/a)	Rm 285, cabinet #2
DOS. CORP	Dosim	1888B	4241090	3/16/2006	3/16/2007	(n/a)	Rm 285, cabinet #2
DOSITECH	Dosim	L36	201810	1/30/2006	1/30/2007	(n/a)	Rm 285, OOE Hazmat Kit, cabinet #2
DOSITECH	Dosim	L36	201813	1/30/2006	1/30/2007	(n/a)	Rm 285, OOE Hazmat Kit, cabinet #2
EBERLINE	I/C	RO-2A	730	1/31/2006	1/31/2007	(n/a)	Rm 285, cabinet #2
EBERLINE	I/C	PIC-6A	E2104	1/9/2006	1/9/2007	(n/a)	Rm 285, cabinet #7--Instrument Kit #2
EBERLINE	I/C	PIC-6A	2156	1/31/2006	1/31/2007	(n/a)	Rm 285, cabinet #2
EBERLINE	I/C	PIC-6A	2187	6/14/2006	6/14/2007	(n/a)	Rm 285, cabinet #2
EBERLINE	I/C	RO-2A	2868	6/14/2006	6/14/2007	(n/a)	Rm 285, cabinet #2
EBERLINE	GM	E-120	11695	1/31/2006	1/31/2007	(n/a)	Rm 285, cabinet #2
Exploranium	γ-spec	GR-130	9824+GM-A		(n/a)	(n/a)	Rm 285, Lab area
GAMMA IND	GM	252B	1910	3/15/2006	3/15/2007	(n/a)	Rm 285, cabinet #2
INOVISION	I/C	451B	6007	6/14/2006	6/14/2007	(n/a)	Rm 285, cabinet #2
LUDLUM	GM	3	3852	6/14/2006	6/14/2007	(n/a)	Rm 285, cabinet #2
LUDLUM	GM	5	18239	6/14/2006	6/14/2007	(n/a)	Rm 285, cabinet #2
LUDLUM	I/C	9	34774	3/15/2006	3/15/2007	(n/a)	Rm 285, cabinet #2
LUDLUM	I/C	9	123331	3/15/2006	3/15/2007	(n/a)	Rm 285, cabinet #2
LUDLUM	CPM	12	1637	6/15/2006	6/15/2007	(n/a)	Rm 285, cabinet #2
LUDLUM	CPM	12	1853	2/1/2006	2/1/2007	(n/a)	Rm 285, cabinet #2
LUDLUM	CPM	12	1856	12/1/2004	12/1/2005	M. Deason	Public Health Lab
LUDLUM	CPM	12(uR)	3643	3/16/2006	3/16/2007	(n/a)	Rm 285, cabinet #2
LUDLUM	CPM	12(uR)	8109	1/9/2006	1/9/2007	(n/a)	Rm 285, cabinet #2
LUDLUM	CPM	12	12890	11/2/2005	11/2/2006	(n/a)	Rm 285, cabinet #2
LUDLUM	CPM	12	13282	11/2/2005	11/2/2006	(n/a)	Rm 285, cabinet #2
LUDLUM	CPM	12	13285	3/16/2006	3/16/2007	(n/a)	Rm 285, cabinet #2
LUDLUM	CPM	12	13292	6/15/2006	6/15/2007	(n/a)	Rm 285, cabinet #2
LUDLUM	CPM	12	13319	6/15/2006	6/15/2007	(n/a)	Rm 285, cabinet #2
LUDLUM	CPM	12	13333	1/9/2006	1/9/2007	(n/a)	Rm 285, cabinet #7--Instrument Kit #2
LUDLUM	CPM	12	13335	3/16/2006	3/16/2007	(n/a)	Rm 285, cabinet #2
LUDLUM	CPM	12	14809	6/15/2006	6/15/2007	(n/a)	Rm 280, cabinet #3--Instrument Kit #1
LUDLUM	CPM	12	14817	1/9/2006	1/9/2007	(n/a)	Rm 285, cabinet #2
LUDLUM	CPM	12	14824	7/27/2001	7/27/2002	Ranier, OR	Temp loan to Ranier F.D.
LUDLUM	CPM	12	14843	1/9/2006	1/9/2007	(n/a)	Rm 285, Spare ER kit
LUDLUM	CPM	12	46454	3/28/2006	3/28/2007	DDL	Rm 640, ER Kit #7 at desk
LUDLUM	CPM	12	46468	10/13/2005	10/13/2006	DAL	Rm 640, ER Kit #3 at desk
LUDLUM	CPM	12	46851	6/14/2006	6/14/2007	PW	Rm 640, ER Kit #6 at desk

INSTRUMENT INFORMATION

MFG	TYPE	MODEL	S/N	CAL DATE	CAL DUE	USER	LOCATION
LUDLUM	CPM	12	46886	1/9/2006	1/9/2007	(extra, RR)	Rm 285, ER Kit #5 Lab area
LUDLUM	CPM	12	46890	10/13/2005	10/13/2006	KS	Rm 640, ER Kit #1 at desk
LUDLUM	CPM	12	47794	3/15/2006	3/15/2007	JS	Rm 640, ER Kit #2 at desk
LUDLUM	CPM	12	47803	1/9/2006	1/9/2007	TL	Rm 640, ER Kit #4 at desk
LUDLUM	CRM	12(-4)	215340	2/16/2005	2/16/2006	(n/a)	Rm 285, cabinet #2 (for neutron detection)
LUDLUM	GM	14A	1984	3/15/2006	3/15/2007	(n/a)	Rm 285, cabinet #2
LUDLUM	GM	14C	37714	10/31/2001	10/31/2002	R. Koenig	Department of Environmental Quality
LUDLUM	CPM Anal	18	34280	3/16/2006	3/16/2007	(n/a)	Rm 285, cabinet #2
LUDLUM	Nal(uR)	19	14507	7/19/2005	7/19/2006	(n/a)	Rm 285, cabinet #2
LUDLUM	Nal(uR)	19	14508	1/9/2006	1/9/2007	(n/a)	Rm 285, cabinet #7--Instrument Kit #2
LUDLUM	Nal(uR)	19	14511	6/14/2006	6/14/2007	(n/a)	Rm 285, cabinet #7--Instrument Kit #1
LUDLUM	Nal(uR)	192	199871	7/19/2005	7/19/2006	(n/a)	Rm 285, cabinet #2
LUDLUM	Nal(uR)	192	203775	6/28/2005	6/28/2006	(n/a)	Rm 285, cabinet #2
LUDLUM	Nal(uR)	192	203817	3/16/2006	3/16/2007	(n/a)	Rm 285, cabinet #2
LUDLUM	Scaler	2000	13425	10/13/2005	10/13/2006	(n/a)	Rm 285, cabinet #7--Air Sampling Kit #1
LUDLUM	Nal	2221	157029	3/16/2006	3/16/2007	(n/a)	Rm 285, cabinet #2
LUDLUM	Scaler	2241-3	204921	3/15/2006	3/15/2007	(n/a)	Rm 285, cabinet #7--Kit #1
LUDLUM	Scaler	2241-3	204956	6/29/2005	6/29/2006	(n/a)	Rm 285, cabinet #7--Kit #2
LUDLUM	GM	2401-EC	161612	6/14/2006	6/14/2007	KS	Rm 640, desk
LUDLUM	GM	2401-EC	161619	10/25/2005	10/25/2006	JS	Rm 640, desk
LUDLUM	GM	2401-EC2	159813	3/15/2006	3/15/2007	DAL	Rm 640, desk
LUDLUM	GM	2401-EC2A	187105	6/14/2006	6/14/2007	DDL	Rm 640, desk -or- vehicle (OOE)
LUDLUM	GM	2401-P	162957	1/9/2006	1/9/2007	JS	Rm 640, desk
LUDLUM	GM	2401-P	198941	1/9/2006	1/9/2007	DDL	Rm 640, desk -or- vehicle (OOE)
LUDLUM	GM	2401-P	162945	3/16/2006	3/16/2007	KS	Rm 640, desk
Reuter-Stokes	PIC	RSS-112	96100056	9/16/2003	9/15/2004	(n/a)	Rm 285, cabinet #2
TECH ASSOC	I/C	IBM-IC V	7250	7/19/2004	7/19/2005	(n/a)	Rm 285, cabinet #7
TECH ASSOC	I/C	IBM-IC V	7252	7/19/2004	7/19/2005	(n/a)	Rm 285, cabinet #7
THERMO	γ-spec	identifinder	04f3/2494	7/9/2004	(n/a)	(n/a)	Rm 285, cabinet #3
VICTOREEN	I/C	190	903	1/30/2006	1/30/2007	(n/a)	Rm 285, HAZMAT kit, cabinet #2 (OOE)
XETEX	GM	335B	45874	3/15/2006	3/15/2007	TDL	Rm 640, desk