



July 27, 2006

U. S. Nuclear Regulatory Commission
Materials Licensing Section
2443 Warrenville Road, Suite 210
Lisle, IL 60532-4352

Dear Sir or Madam:

Howard Regional Health System would like to amend its Byproduct Materials License, Number 13-13028-02, to list Richard Stephens, M.D. as the Radiation Safety Officer. Dr. Stephens has previously served as the Radiation Safety Officer on the Blackford Community Hospital U.S.N.R.C. license, Number 13-20449-01 (license terminated 2005). We ask that the currently listed R.S.O. on our license, Dr. Dada, be retained on the license as an Authorized User.

In addition, we ask that Vincent Lombardi, M.D. be deleted from the License.

Finally, please find enclosed an updated facility diagram of the nuclear cardiology department. The updated diagram reflects the true direction of north, which was mislabeled on the facility diagram previously submitted.

If there are any questions concerning this license amendment, please contact our nuclear medicine consultant, Mr. Patrick J. Byrne, D.A.B.R. at 877-317-5811.

Sincerely,

A handwritten signature in black ink, appearing to read 'James P. Alender', written over a white background.

James P. Alender
President and CEO

RECEIVED AUG 07 2006



Howard

Regional Health System

July 21, 2006

Rik Stephens, MD
Radiation Safety Officer
Howard Regional Health System
3500 S. LaFountain
Kokomo, IN 46902

Re: Radiation Safety Officer/Executive Management
Letter of Understanding

Dear Dr. Stephens:

You have been appointed the Radiation Safety Officer (RSO) of this facility for our United States Nuclear Regulatory Commission Materials License. This "Letter of Understanding" is prepared to comply with Title 10 Code of Federal Regulations (CFR) Part 35.24(b). This section of the regulations requires that you agree in writing to the following:

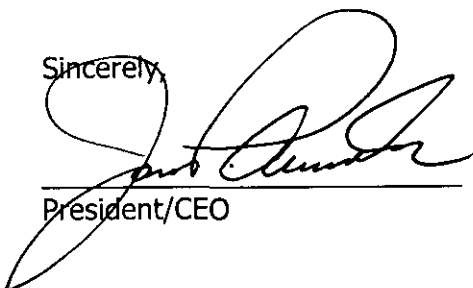
- Assume responsibility for implementing the Radiation Protection Program
- Ensure that radiation safety activities are being performed in accordance with our own approved procedures and all regulatory requirements.

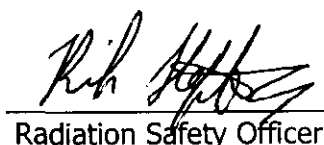
Furthermore, in compliance with 10 CFR 35.24 (e), (g), the executive management of this facility agrees to provide you as RSO:

- Specific written notation of your authority, duties and responsibilities, see attached.
- Sufficient authority, organizational freedom, time, resources and management prerogative to:
 1. Identify radiation safety problems:
 2. Initiate, recommend, or provide corrective actions:
 3. Stop unsafe operations: and,
 4. Verify implementation of corrective actions.

Our signatures noted below will attest to the issues noted above. Please make a copy of this document for your files and return the original to my attention.

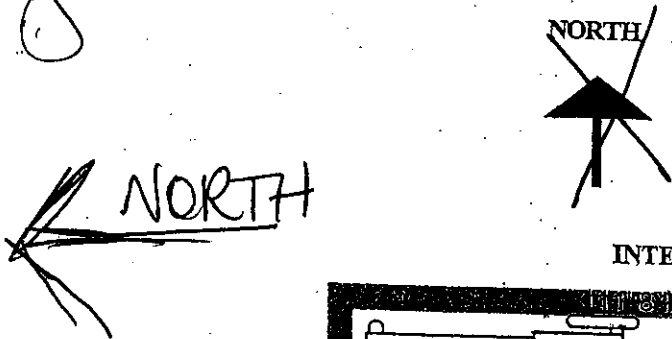
Sincerely,



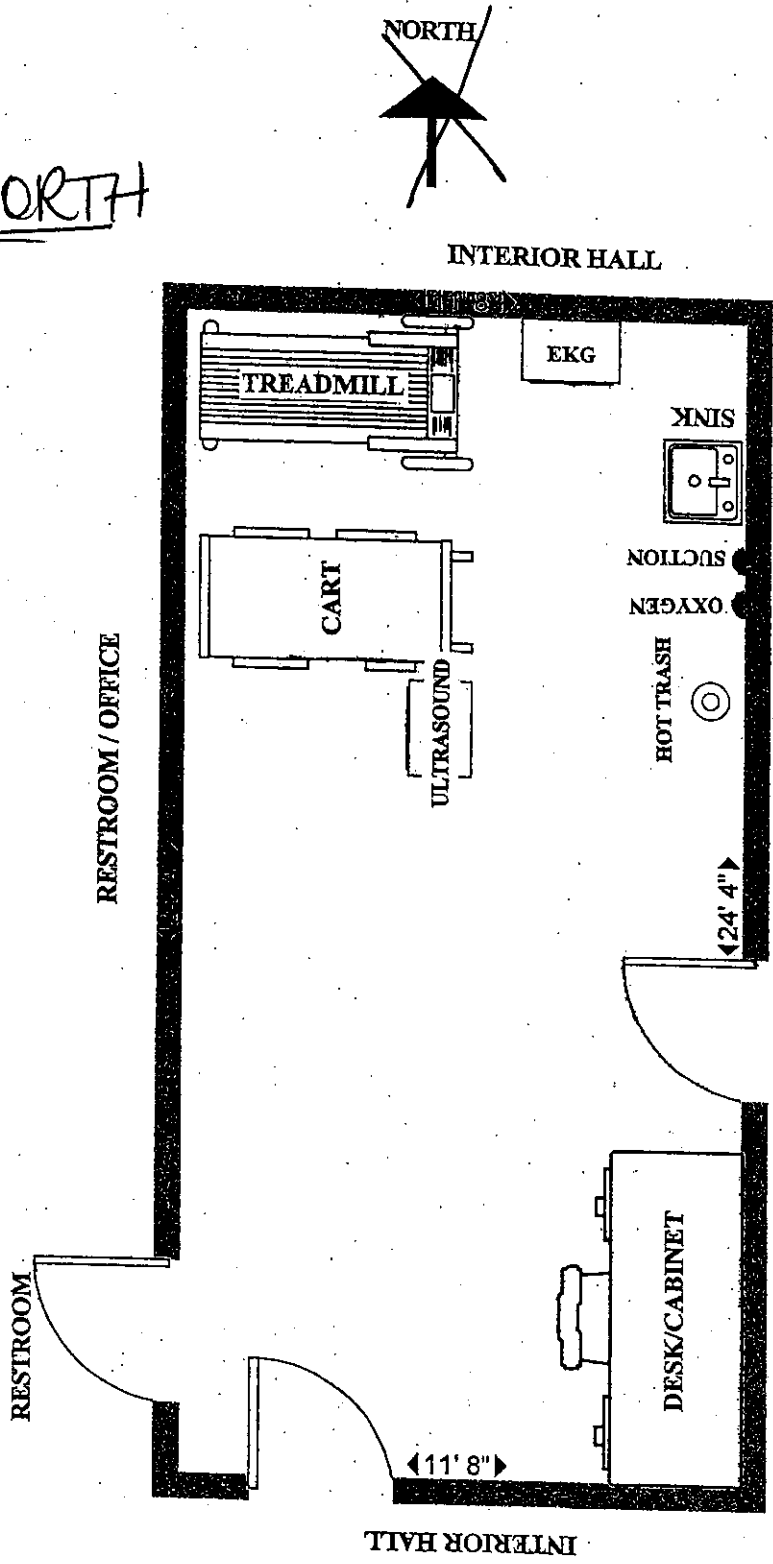
President/CEO

Radiation Safety Officer

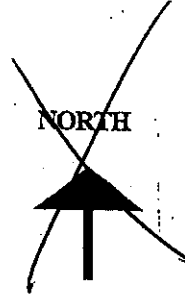
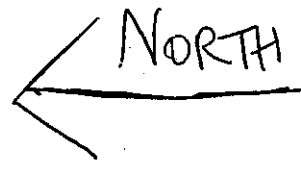
"North" direction corrected on 3/18/06 - will change on next amendment



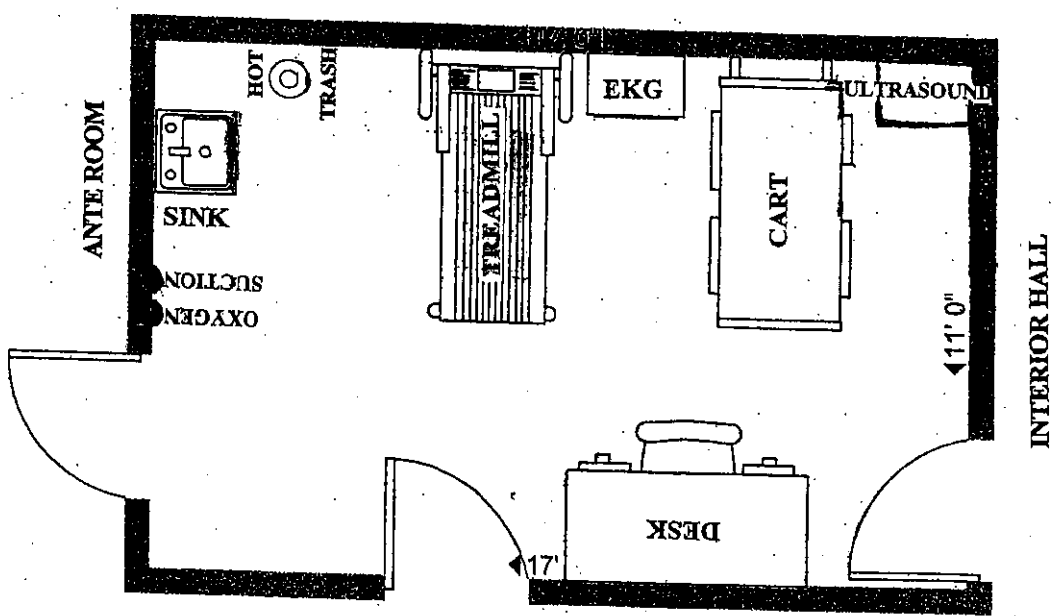
CVL STRESS TESTING ROOM 1
LOCATED IN THE BASEMENT IN THE
CARDIOVASCULAR DEPARTMENT
HOWARD REGIONAL HEALTH SYSTEM



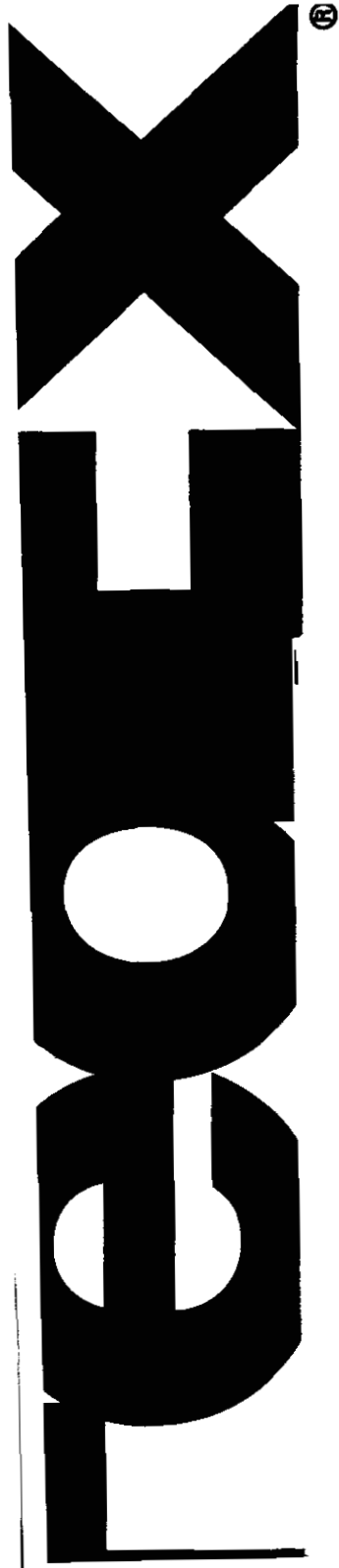
"North" direction corrected on 3/18/06 - will change on next amendment.



INTERIOR HALL



CVL TESTING ROOM 7
LOCATED IN THE BASEMENT IN THE
CARDIOVASCULAR DEPARTMENT
HOWARD REGIONAL HEALTH SYSTEM



Express

Alignment of FedEx PowerShip Label here.

FedEx STANDARD OVERNIGHT FRI
emp: 171271 03AUG06

TRK# 8524 3069 4301 FORM 0215

Deliver By: 04AUG06 A2

60532 -IL-US ORD NY BDFA



52

FedEx US Airbill Express

FedEx Tracking Number

8524 3069 4301

Recipient's Copy

1 From *This portion can be removed for Recipient's records.* 852430694301
 Date 8/3/06 FedEx Tracking Number
 Sender Name Kelly Fitzgerald RT(R-N) Phone 765 453-8597
 Company HOWARD REG HEALTH SYSTEM Q750
 Address 3500 S LAFOUNTAIN ST
 City KOKOMO State IN ZIP 46902-3803

2 Your Internal Billing Reference

3 To Recipient's Name US Nuclear Regulatory Commission
 Materials Licensing Section
 Company
 Recipient's Address 2443 Warrenville Rd, Ste 210
 We cannot deliver to P.O. boxes or P.O. ZIP codes.
 Address
 To request a package be held at a specific FedEx location, print FedEx address here.
 City Lisle State IL ZIP 60532-4352

NO POUCH NEEDED. See back for peel and stick application instructions.

RECIPIENT: PEEL HERE

4a Express Package Service Packages up to 150 lbs.
 FedEx Priority Overnight Next business morning*
 FedEx Standard Overnight Next business afternoon*
 FedEx First Overnight Earliest next business morning delivery to select locations**

FedEx 2Day Second business day*
 FedEx Express Saver Third business day*
FedEx Envelope rate not available. Minimum charge: One-pound rate.

4b Express Freight Service Packages over 150 lbs.
 FedEx 1Day Freight* Next business day**
 FedEx 2Day Freight Second business day**
 FedEx 3Day Freight Third business day**
* Call for Confirmation. ** Declared value limit \$500

5 Packaging
 FedEx Envelope*
 FedEx Pak* Includes FedEx Small Pak, FedEx Large Pak, and FedEx Sturdy Pak
 FedEx Box
 FedEx Tube
 Other

6 Special Handling Include FedEx services in Section 3.
 SATURDAY Delivery Available ONLY for FedEx Priority Overnight, FedEx 2Day, FedEx 1Day Freight, and FedEx 2Day Freight to select ZIP codes.
 HOLD Wednesday at FedEx Location Not available for FedEx First Overnight.
 HOLD Saturday at FedEx Location Available ONLY for FedEx Priority Overnight and FedEx 2Day to select locations.

Does this shipment contain dangerous goods? One box must be checked.
 No
 Yes As per attached Shipper's Declaration
 Yes Shipper's Declaration not required
 Dry Ice Dry Ice 9, UN 1845
 Cargo Aircraft Only
Dangerous goods (including Dry Ice) cannot be shipped in FedEx packaging.

Payment Bill to: Enter FedEx Acct. No. or Credit Card No. below. Obtain Recip. Acct. No.
 Sender Acct. No. in Section 1 will be billed.
 Recipient
 Third Party
 Credit Card
 Cash/Check

Total Packages Total Weight Total Charges
 Credit Card Auth.

*Our liability is limited to \$100 unless you declare a higher value. See the FedEx Service Guide for details.

8524 3069 4301