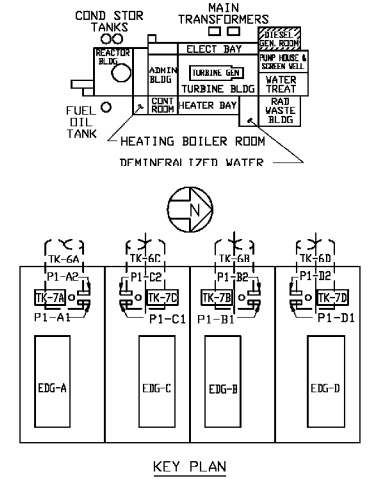


- NOTES**
1. ALL COMPONENT MARK NUMBERS PREFIXED 93 UNLESS OTHERWISE NOTED.
  2. ALL MANUAL VALVES PREFIXED EDG UNLESS OTHERWISE NOTED.
  3. (DC) DENOTES DIELECTRIC COUPLING.
  4. FIG 'B' SIMILAR TO FIG 'A'; FIG 'D' SIMILAR TO FIG 'C'.
  5. WITH PUMP P1-A1 SELECTED AS THE LEAD PUMP ON ENGINE CONTROL PANEL (ECP, A).
  6. DUPLEX FILTERS ARE SHOWN AND ARE NORMALLY IN SINGLE ELEMENT OPERATION.
  7. FILTER IS PART OF INJECTION ASSEMBLY. ITS PURPOSE IS TO PROVIDE FINAL FILTRATION BEFORE ATOMIZING FUEL.
  8. EQUIPMENT FURNISHED ON CONTRACT AP-9.
  9. LINE DESIGNATIONS FOR EDG 'B' AND EDG 'D' ARE PREFIXED 'B' IN LIEU OF 'A' FOR EDG 'A' AND EDG 'C', AS APPLICABLE.



- SYSTEM INTENDED FUNCTION BOUNDARY
- COMPONENTS SUBJECT TO AMR
- EMERGENCY DIESEL GENERATOR SYSTEM AMM-12
- FUEL OIL SYSTEM AMM-13

DWN	CHK'D	NUCLEAR POWER PLANT	
R. E.	VERIF.	FLOW DIAGRAM FUEL OIL LINES EMERGENCY DIESEL GENERATORS SYSTEM 93	
APPROV.	DATE	SCALE	NONE
		DWG NO	FM-93A
		SHEET OF	22
		REV	22

22	1/5/97	AS BUILT PER DCR-97-191	JB	RVB	-	KF	SKK
REV	NO.	DATE	DESCRIPTION	DWN	CHK	BE	VFY
REVISIONS							

0	3-20-06						
NO.	DATE	DESCRIPTION	BY	CHK	APP		
REVISIONS							
LRA-FM-93A-0							
CAD FILE LRA-FM-93A-22.DGN							
PLOT FILE FM-93A-22.CAL							

REF: 1S1-FM-93A