

- NOTES:**
1. ALL COMPONENT MARK NUMBERS PREFIXED 46 UNLESS OTHERWISE NOTED.
  2. ALL MANUAL VALVES PREFIXED ESW UNLESS OTHERWISE NOTED.
  3. ALL ILRT CONNECTIONS (I) ARE PIPING CLASS IC-NB BEGINNING AT THE DOWNSTREAM SIDE OF THE REDUCER TO THE 3/8" ILRT CONNECTION.
  4. VALVES 46SW-640, 643, 646, 649 CAN NOT BE CLOSED WITH 46FE-101A1, B1, A2, B2 INSTALLED.
  5. VALVE INTERNALS REMOVED PER ER-JF-03-00959.

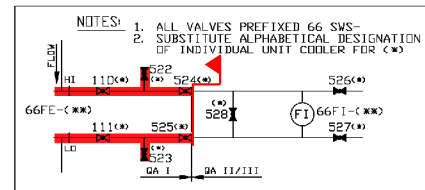
- REFERENCES:**
1. FLOW DIAGRAM SYMBOLS, FM-14A.
  2. FLOW DIAGRAM SERVICE WATER SYSTEM 46, FM-46A.
  3. FLOW DIAGRAM REACTOR BLDG. COOLING WATER FM-15A.
  4. FLOW DIAGRAM REACTOR BLDG. SERVICE WATER COOLING FB-10H.
  5. FLOW DIAGRAM TURBINE BLDG. SERVICE WATER COOLING FB-18H.
  6. FLOW DIAGRAM CONTROL ROOM AREA SERVICE & CHILLED WATER FB-55E.

NOT A LONG LIVED COMPONENT

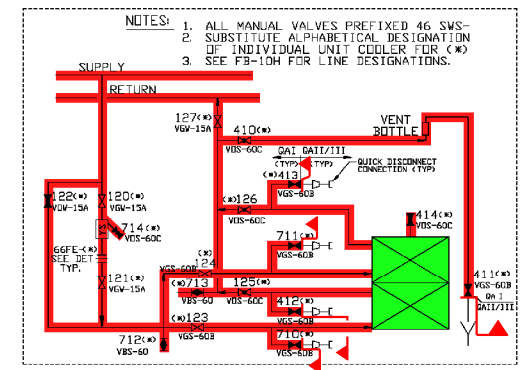
NOT A LONG LIVED COMPONENT

NOT A LONG LIVED COMPONENT

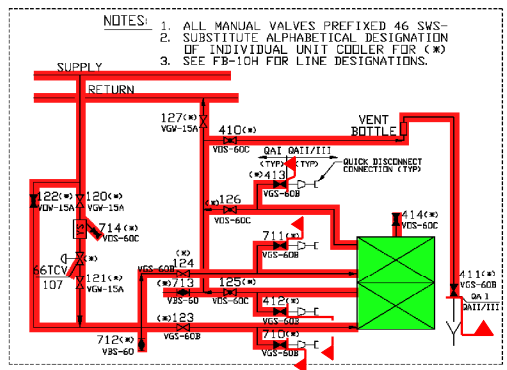
NOT A LONG LIVED COMPONENT



UNIT COOLER	66FE-1	66F1-1
66UC-22A	110	110
66UC-22B	111	111
66UC-22C	112	112
66UC-22D	113	113
66UC-22E	116	116
66UC-22H	117	117
66UC-22J	118	118
66UC-22K	119	119



NOTE: 66UC-22K DOES NOT HAVE UNIT COOLER VENT VALVE 46SWS-414K



NO.	DESCRIPTION	DATE	BY	CHKD.	APP.
46	INCORPORATED DRN-05-02551 ER-JF-03-00959	12/7/05	RVB	KB	DJC
47	INCORPORATED DRN-05-02353 ER-JF-05-25048	8/16/05	RVB	PD	PJG

REV	DATE	DESCRIPTION	DWN	CHK	R	VFY	APP
45	8/6/04	AS BUILT PER DCR-02-015	KMB	JB	---	KM	SKK
44	8/6/04	AS BUILT PER MOD NO JD-99-015	KMB	PJD	---	KM	SKK
44	5/24/04	AS BUILT PER MOD NO JC-01-029	RVB	PJB	---	MM	SKK
43	2/13/04	AS BUILT PER MOD NO JE-00-143	SMC	RVB	---	MM	SKK
42	6/26/04	AS BUILT PER DCR-00-153	PJB	KMB	---	KM	SKK
41	3/26/04	AS BUILT PER DCR-00-038	KMB	RVB	---	KM	SKK
40	3/26/04	AS BUILT PER DCR-99-057	PJB	RVB	---	KM	SKK

THE ORIGINAL TRACING FOR THIS DRAWING WAS PREPARED BY: STONE & WEBSTER CORP.

A RECORD OF THE ORIGINAL DOCUMENT WITH APPROVAL INITIALS/SIGNATURES AND THE P.E. SEAL AND SUBSEQUENT REVISIONS THROUGH 4/11/04 APPROVAL INITIALS/SIGNATURES, IS MAINTAINED IN THE FILES OF THE NEW YORK POWER AUTHORITY.

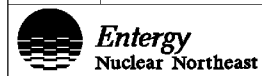
THIS DOCUMENT WAS ELECTRONICALLY STORED AT REVISION 7.

QA CAT. I, II/III

NUCLEAR SAFETY RELATED

**JAMES A. FITZPATRICK**  
NUCLEAR POWER PLANT

FLOW DIAGRAM  
EMERGENCY SERVICE WATER  
SYSTEM 46 & 15



SCALE: NONE  
DWG NO: FM-46B  
SHEET 1 OF 1  
REV: 48



- COMPONENTS SUBJECT TO AMR**
- SYSTEM WATER SYSTEMS AMM-11
  - EMERGENCY DIESEL GENERATOR SYSTEM AMM-12
  - HEATING, VENTILATION AND AIR CONDITIONING SYSTEMS AMM-16

NO.	DATE	DESCRIPTION	BY	CHK	APP
0	3-3-06				

REVISIONS

**LRA-FM-46B-0**

CD FILE: LRA-FM-46B\_48.DGN  
PLOT FILE: FM-46B\_48.CAL