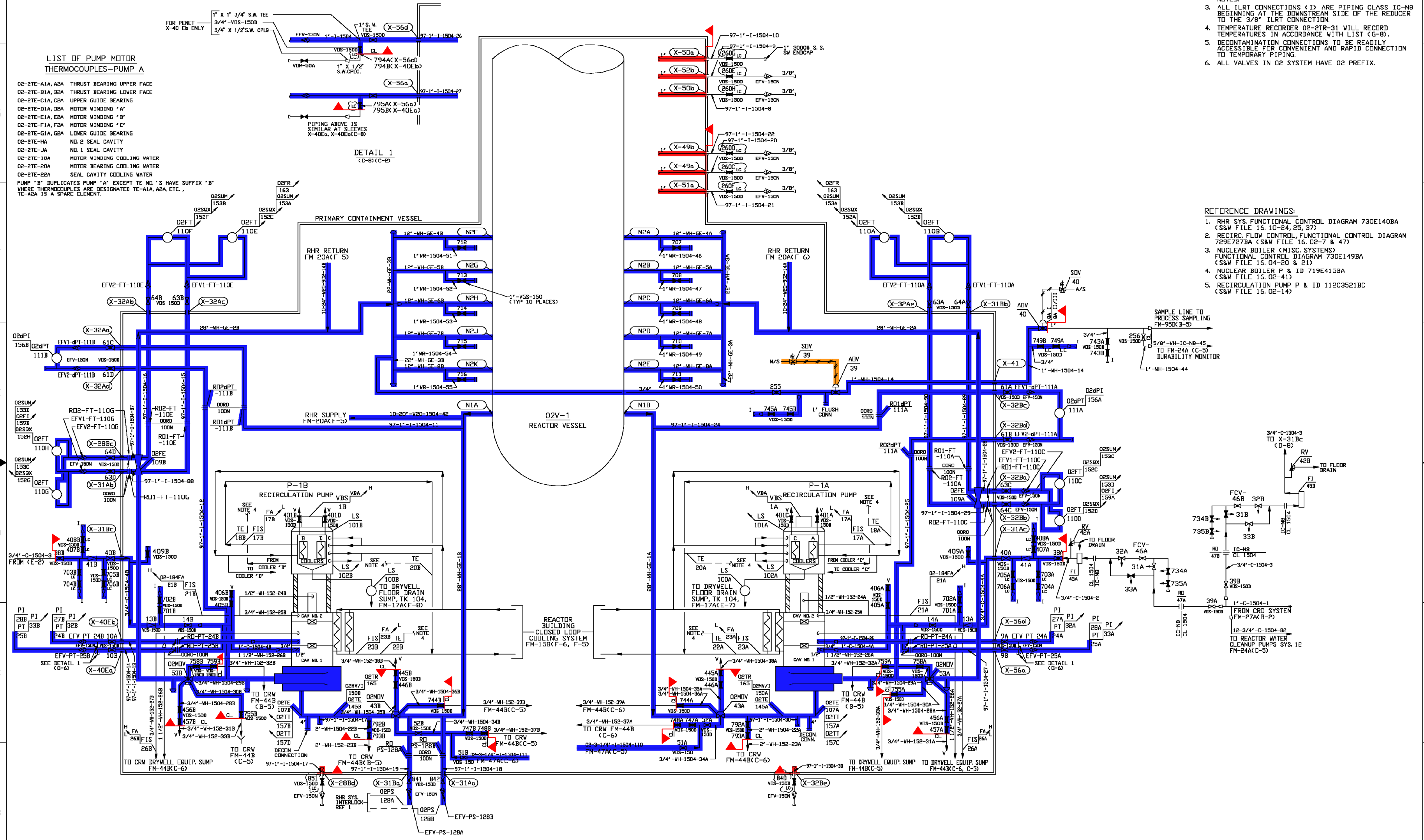
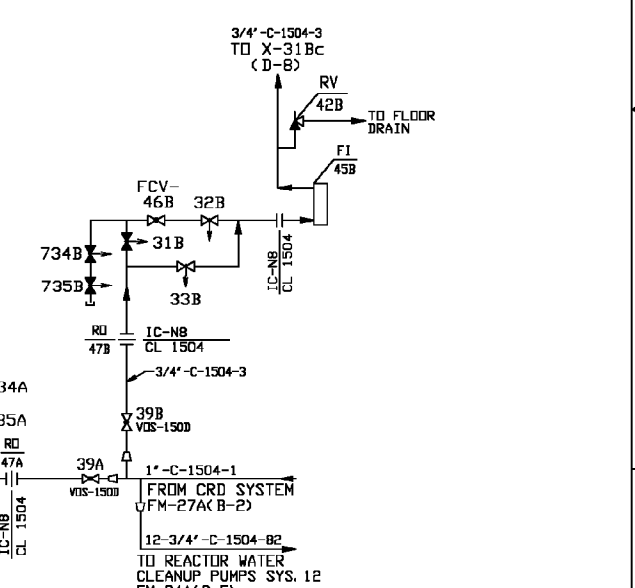


- LIST OF PUMP MOTOR THERMOCOUPLES-PUMP A**
- O2-2TE-A1A, A2A THRUST BEARING UPPER FACE
  - O2-2TE-B1A, B2A THRUST BEARING LOWER FACE
  - O2-2TE-C1A, C2A UPPER GUIDE BEARING
  - O2-2TE-D1A, D2A MOTOR WINDING 'A'
  - O2-2TE-E1A, E2A MOTOR WINDING 'B'
  - O2-2TE-F1A, F2A MOTOR WINDING 'C'
  - O2-2TE-G1A, G2A LOWER GUIDE BEARING
  - O2-2TE-HA ND 2 SEAL CAVITY
  - O2-2TE-JA ND 1 SEAL CAVITY
  - O2-2TE-18A MOTOR WINDING COOLING WATER
  - O2-2TE-20A MOTOR BEARING COOLING WATER
  - O2-2TE-22A SEAL CAVITY COOLING WATER
- PUMP 'B' DUPLICATES PUMP 'A' EXCEPT TE NO.'S HAVE SUFFIX 'B' WHERE THERMOCOUPLES ARE DESIGNATED TE-A1A, A2A, ETC., TE-A2A IS A SPARE ELEMENT.



- NOTES**
1. ALL COMPONENT MARK NUMBERS PREFIXED O2-2 UNLESS OTHERWISE NOTED.
  2. ALL MANUAL VALVES PREFIXED 'RWR' UNLESS OTHERWISE NOTED.
  3. ALL IIRT CONNECTIONS (I) ARE PIPING CLASS IC-NB BEGINNING AT THE DOWNSTREAM SIDE OF THE REDUCER TO THE 3/8" IIRT CONNECTION.
  4. TEMPERATURE RECORDER O2-2TR-31 WILL RECORD TEMPERATURES IN ACCORDANCE WITH LIST (G-8).
  5. DECONTAMINATION CONNECTIONS TO BE READILY ACCESSIBLE FOR CONVENIENT AND RAPID CONNECTION TO TEMPORARY PIPING.
  6. ALL VALVES IN O2 SYSTEM HAVE O2 PREFIX.

- REFERENCE DRAWINGS:**
1. RHR SYS. FUNCTIONAL CONTROL DIAGRAM 730E140BA (S&W FILE 16.10-24, 25, 37)
  2. RECIRC. FLOW CONTROL, FUNCTIONAL CONTROL DIAGRAM 729E127BA (S&W FILE 16.02-7 & 47)
  3. NUCLEAR BOILER (MISC. SYSTEMS) FUNCTIONAL CONTROL DIAGRAM 730E149BA (S&W FILE 16.04-20 & 21)
  4. NUCLEAR BOILER P & ID 719E413BA (S&W FILE 16.02-41)
  5. RECIRCULATION PUMP P & ID 112C3521BC (S&W FILE 16.02-14)



- SYSTEM INTENDED FUNCTION BOUNDARY**
- COMPONENTS SUBJECT TO AMR**
- PRIMARY CONTAINMENT PENETRATIONS AMM-17
  - INSTRUMENT AIR SYSTEM AMM-20
  - REACTOR COOLANT SYSTEM PRESSURE BOUNDARY AMM-33

QA CAT. I, II/III

NUCLEAR SAFETY RELATED  
**JAMES A. FITZPATRICK**  
 NUCLEAR POWER PLANT

RESP ENG  
 VERIFIER  
 APPROVAL  
 DATE

FLOW DIAGRAM  
 REACTOR WATER RECIRCULATION  
 SYSTEM O2-2

SCALE NONE  
 DWG NO FM-26A  
 SHEET OF 51  
 REV 51  
 REF: ISI-FM-26A

REV	DATE	DESCRIPTION	DWG	CHK	RE	APP
51	8/18/99	AS BUILT PER DCR-02-289	KMB	JR	-	KM JA
50	8/18/99	AS BUILT PER MOD. NO. JD-02-070	PJD	JB	-	NH JA
49	8/18/99	AS BUILT PER DCR-01-256 & MOD. NO. JD-99-142	KMB	RVB	-	KH SKK
48	8/18/99	AS BUILT PER DCR-96-359	PJD	RVB	-	KH SKK
47	8/18/99	AS BUILT PER DCR-99-507	KMB	RVB	-	WR SKK
46	8/17/98	AS BUILT PER MOD NO M1-97-132	PJD	RVB	-	WR SKK
45	8/17/98	AS BUILT PER MOD NO M1-97-063	PJD	RVB	-	KF SKK
44	8/11/97	AS BUILT PER DCR-97-307	DMC	KMB	-	KF SKK
43	8/27/97	AS BUILT PER DCR-97-092	PJD	RVB	-	KF SKK
REV	DATE	DESCRIPTION	DWG	CHK	RE	APP

NO.	DATE	DESCRIPTION	BY	ENC	CHK	APP
REVISIONS						
LRA-FM-26A-0						
LRA-FM-26A-51.DGN						
FM-26A-51.CAL						