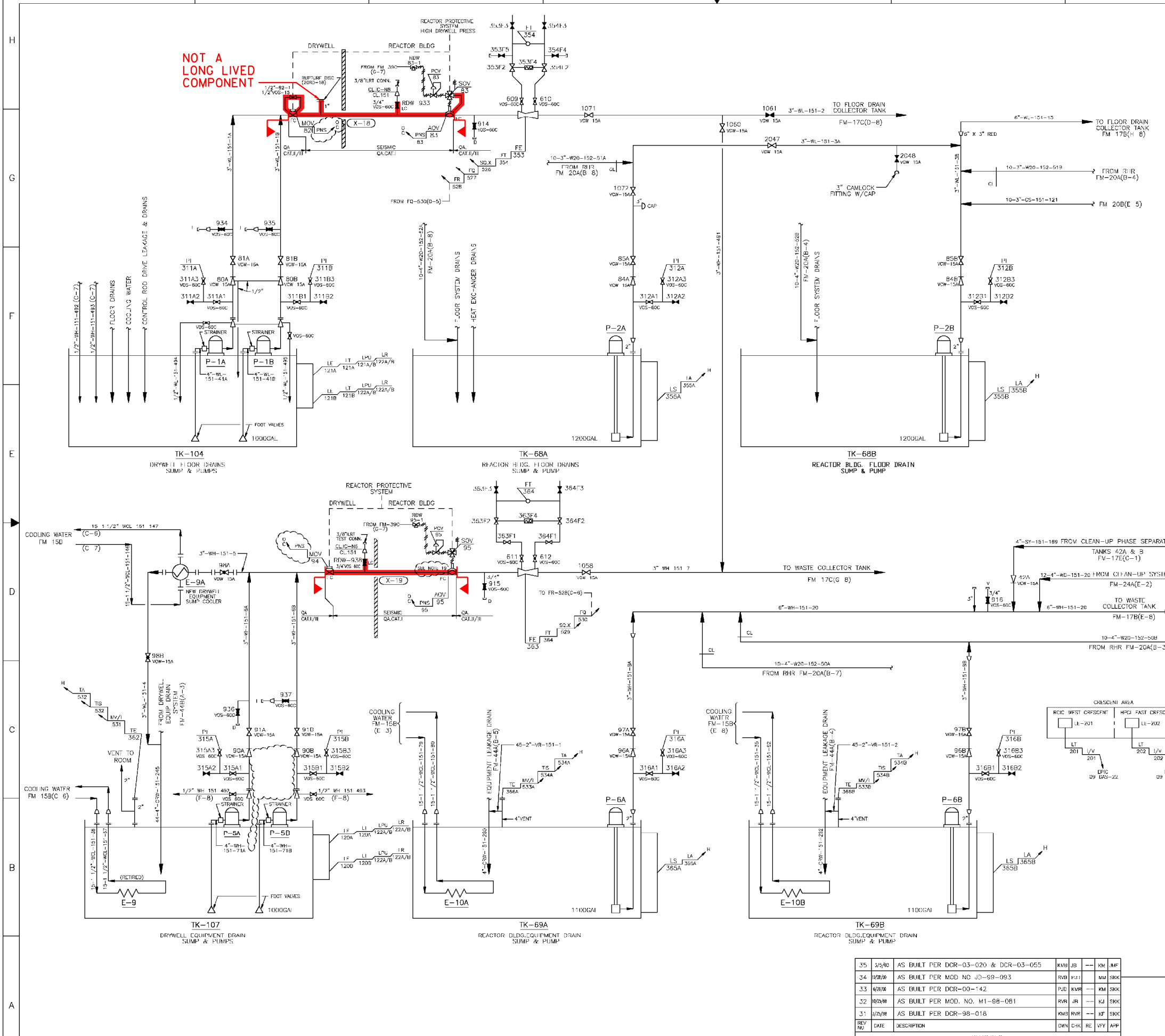


NOT A LONG LIVED COMPONENT

- NOTES**
1. ALL COMPONENT MARK NUMBERS PREFIXED 20 UNLESS OTHERWISE NOTED.
  2. ALL MANUAL VALVES PREFIXED RDW UNLESS OTHERWISE NOTED.
  3. EQUIPMENT DRAINS & PUMP SEALS SHALL BE ROUTED TO EQUIPMENT DRAIN OR FLOOR DRAIN SYSTEM AND NOT FLOW FREELY ACROSS THE FLOOR.
  4. ALL RADWASTE ALARMS WILL BE ON AN ANNUNCIATOR ON THE RADWASTE CONTROL ROOM PANEL, EXCEPT DRYWELL EQUIPMENT SHALL ALARM IN MAIN CONTROL ROOM. A COMMON TROUBLE ALARM FROM THE RADWASTE ANNUNCIATOR SHALL ALARM IN THE MAIN CONTROL ROOM.
  5. ALL CONTROLLERS TO HAVE "MANUAL AUTOMATIC" CONTROL STATIONS.
  6. ALL VALVES WITH AIR OR MOTOR OPERATORS ARE TO HAVE POSITION INDICATING LIGHTS ON THE ASSOCIATED PANEL FOR BOTH OPEN & CLOSED POSITIONS.
  7. OPERATING STATUS LIGHTS FOR DRYWELL SUMP PUMPS WILL BE LOCATED ON MAIN CONTROL PANEL. ALL OTHER PUMPS, CENTRIFUGALS, MIXER & CONVEYOR WILL HAVE OPERATING STATUS LIGHTS ON THE RADWASTE PANEL.
  8. SUMP PUMPS WILL START AUTOMATICALLY ON HIGH LEVEL AND STOP AUTOMATICALLY ON LOW LEVEL. OPERATING TIME WILL BE TOTALIZED ON EACH SUMP PUMP.
  9. COLLECT DRAIN PIPING TO SUMPS AND REVISE TO CONFORM TO PIPING LAYOUT. THE ONLY DRAINS REQUIRING DIRECT ROUTING ARE THOSE INDICATED COMING FROM OTHER DRAWINGS.
  10. INCOMING PIPING TO SUMPS SHALL TERMINATE BELOW LOW WATER LEVEL TO PROVIDE A WATER SEAL. OIL GAS LINE DRAINS SHALL BE SHOWN AS ABOVE OR WITH OIL SWALS SUFFICIENT TO PREVENT OIL GASES FROM ENTERING SUMP.
  11. ALL PIPING AND VALVES PRESSURE/TEMPERATURE REQUIREMENTS ARE APPROXIMATE 150 PSIG/150°F.
  12. ALL IJRT CONNECTIONS (I) ARE PIPING CLASS 1C-1A BEGINNING AT THE DOWNSTREAM SIDE OF THE REDUCER TO THE 3/8" IJRT CONNECTION.
  13. ALL PIPING CLASS 151 & 153 WILL BE RADIOGRAPHED IN SYS. 20 PER AP 2.3.
  14. PIPE CLASS 136 WILL USE BONDSTRAND SERIES 2000 PIPE.
  15. ALL SYSTEM 20 PUMPS WHICH REQUIRE SEAL WATER WILL HAVE SOLENOID VALVES ON SEAL WATER LINES WHICH OPEN DURING PUMP OPERATION. THE SEAL WATER WILL BE CONDENSATE.
  16. F.O. DENOTES FLUSH OUTALL. F.O.'S ARE 1" CONNECTIONS & HAVE 1" VCS-60B UNLESS OTHERWISE NOTED.
  17. ALL OUTDOOR PIPING IN THE AREA OF THE WASTE SURGE TANK TK-18, WILL BE HEAT TRACED.
  18. F.C. DENOTES CLOSE ON AIR FAILURE.
  19. VAVT 404-95 OPENS DURING PUMP OUT OF TEST DRYWELL EQUIPMENT SUMP. MANUAL OPERATING MECHANISM LOCKED DISENGAGED.
- REFERENCES:**
1. FLOW DIAGRAM SYMBOLS FM 14A.



**SYSTEM INTENDED FUNCTION BOUNDARY**

**COMPONENTS SUBJECT TO AMR**

**PRIMARY CONTAINMENT PENETRATIONS AMM-17**

QA CAT. I, II, III

NUCLEAR SAFETY RELATED

**James A. Fitzpatrick**  
NUCLEAR POWER PLANT

FLOW DIAGRAM  
RADWASTE  
SYSTEM 20

DATE	DESCRIPTION	BY	CHK	APP			
3/5/02	AS BUILT PER DCR-03-020 & DCR-03-055	KMB	JB	MM			
3/4/02	AS BUILT PER MGD NO JD-89-093	RVB	HJJ	MM			
6/26/06	AS BUILT PER DCR-00-142	PUD	KWF	MM			
2/24/08	AS BUILT PER MOD. NO. M1-88-081	RVR	JR	KJ			
3/1/08	AS BUILT PER DCR-98-018	KMB	RVR	KF			
REV NO	DATE	DESCRIPTION	OWN	CHK	RE	VFY	APP

SCAF NONE

ENTEGY  
Nuclear Services

FWG NO: FM-17A

REV: 35

0 3-3-06

NO. DATE DESCRIPTION BY ENG CHK APP

REVISIONS

**LRA-FM-17A-0**

CAD FILE: LRA-FM-17A\_35.DGN

REVISED FILE: FM-17A\_35.CAL