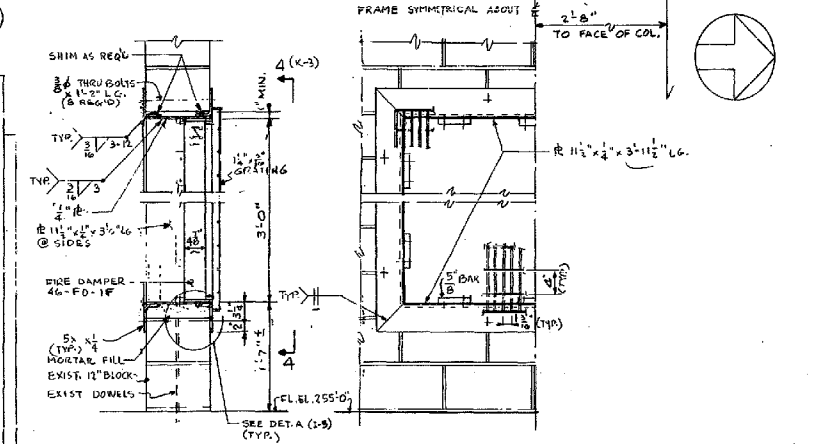
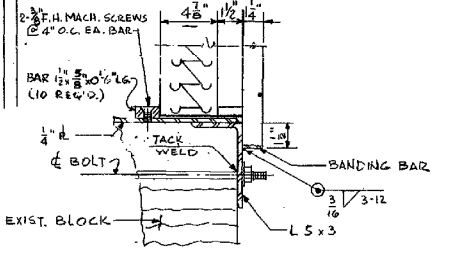


**SAFETY RELATED PUMP ROOMS**  
**PLAN ELEV 255'-0"**  
 SCALE: 3/16" = 1'-0"

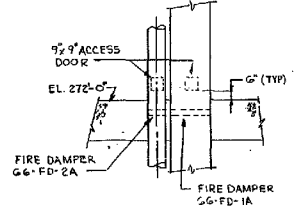


3-3 (G-3)  
 SCALE: 1" = 1'-0"  
 JAMBS SIMILAR

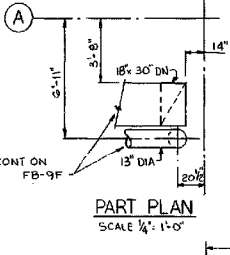
4-4 (H-1)  
 SCALE: 1" = 1'-0"



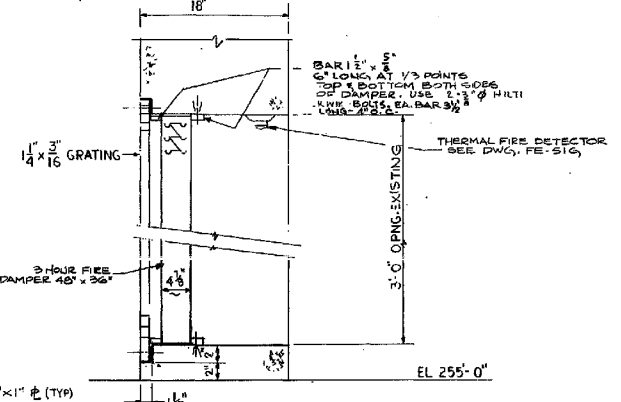
**DET. A (J-2)**  
 SCALE: 3" = 1'-0"



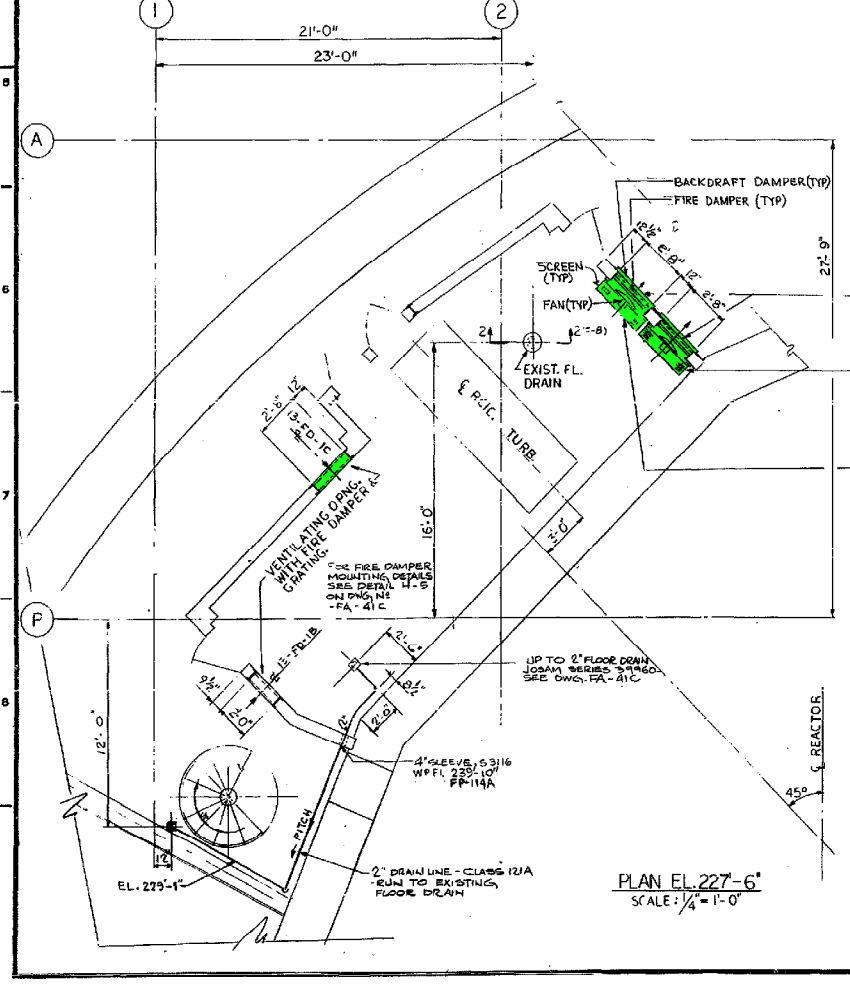
**SECT. 5-5 (K-5)**  
 SCALE: 1/4" = 1'-0"



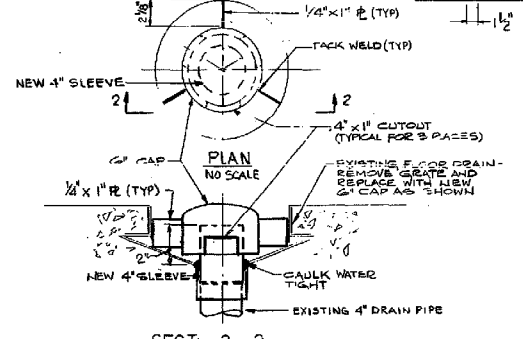
**PART PLAN**  
 SCALE: 1/4" = 1'-0"



**SECT. 1-1**  
 SCALE: 1/2" = 1'-0"



**PLAN EL. 227'-6"**  
 SCALE: 1/4" = 1'-0"



**SECT. 2-2**  
 NO SCALE

**GENERAL NOTES:**

- SCALE: AS NOTED
- ALL STEEL SHAPES SHALL BE ASTM A-36
- GRATING SHALL BE GALV. 12" x 6" BEARING BARS AT 1 1/2" O.C. WITH CROSS BARS AT 4" O.C. ALL ENDS SHALL BE BANDAID.
- ALL STEEL SURFACES (EXCEPT GRATING) SHALL HAVE A PRIME COAT AND FINISH COAT OF PAINT.

**REFERENCE DWGS:**

- FA-41A, B, C - REACTOR BUILDING RCIC ENCL. & HPCI BARRIER
- FM-7A - MACHINE LOCATION SCREENWELL & WATER TREATING
- FE-51A - COULOUT PLAN - FIRE DETECTION SYSTEM
- FC-52A - REACTOR BUILDING RCIC ENCL. & HPCI BARRIER

REV	DATE	DESCRIPTION	BY	CHK	APP
4	10/14/05	AS-BUILT PER DCR 98-383	CH	MS	SK
3		REPLACEMENT REPRODUCIBLE-AS-BUILT PER MOD. NO. M1-01-198	SK		
2		AS-BUILT PER MOD. NO. FI-85-074			
1		ORIGINAL ISSUE AS BUILT PER FI-79-15 & 11 ECR No. 018 CONTROL No. 3-015 & 3-014	SK	RPU	DAH

POWER AUTHORITY OF THE STATE OF NEW YORK

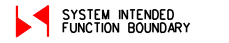
**JAMES A. FITZPATRICK**  
 NUCLEAR POWER PLANT

VENTILATION  
 RCIC AREA & SAFETY RELATED  
 PUMP ROOMS

STONE & WEBSTER ENGINEERING CORPORATION  
 NEW YORK, N.Y.

APPROVED: REGISTERED PROFESSIONAL ENGINEER No. \_\_\_\_\_ STATE OF \_\_\_\_\_

DRAWING NUMBER: **FB-60A** REV. **4**



COMPONENTS SUBJECT TO AMR

HEATING, VENTILATION AND AIR CONDITIONING SYSTEMS AMR-16

NO.	DATE	DESCRIPTION	BY	CHK	APP
0	8-5-05				

REVISIONS

**LRA-FB-60A-0**

CAUSE FILE: LRA-FB-60A\_04.DGN  
 AUTHOR FILE: FB-60A\_04.CAL