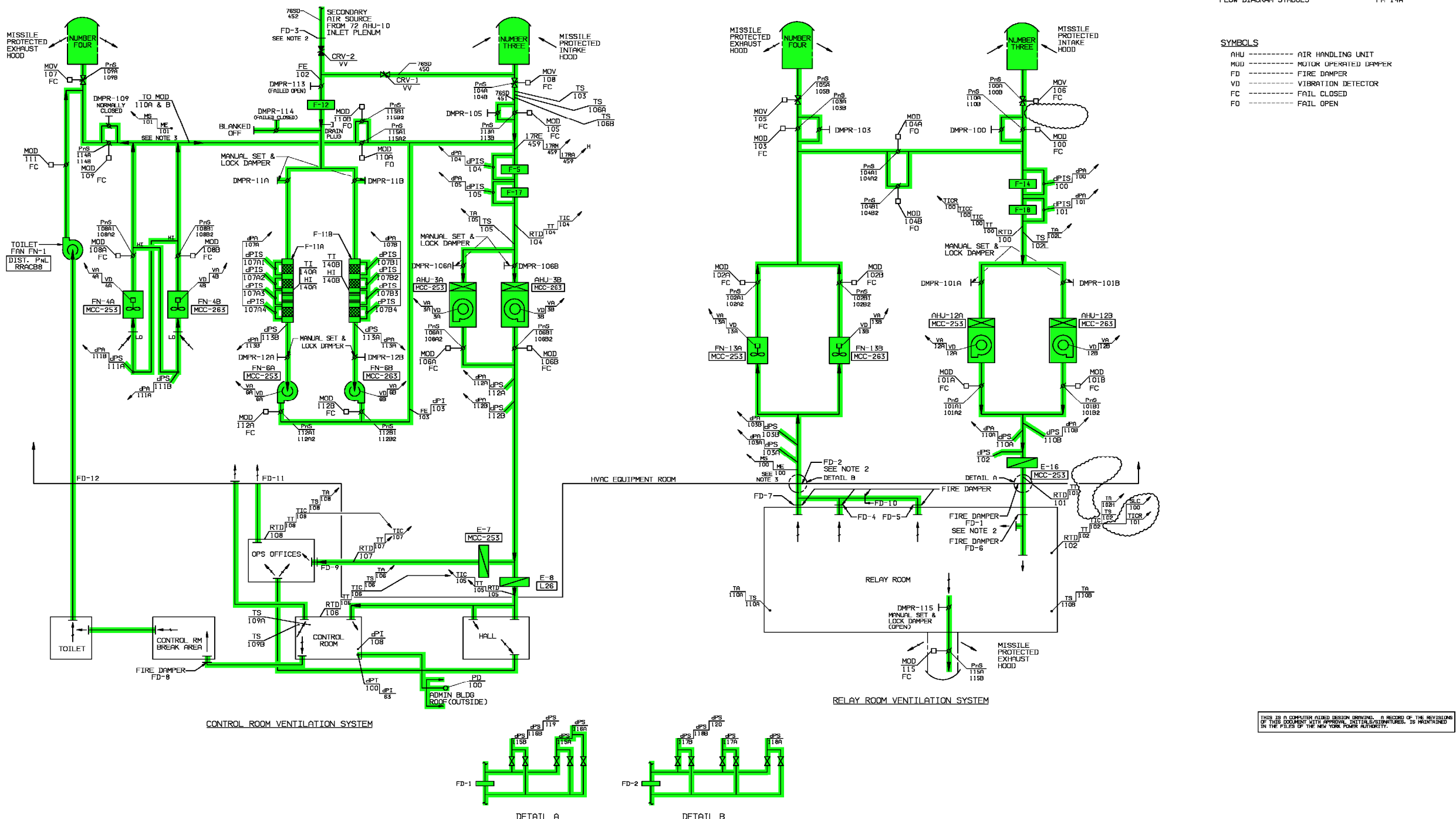
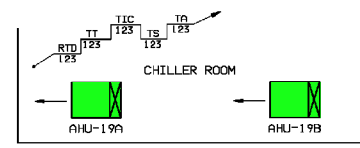


- NOTES**
1. ALL COMPONENT MARK NUMBERS PREFIXED 70 UNLESS OTHERWISE NOTED.
 2. FOR MODEL AND DUCT SIZE SEE DWG. 10.00-721.
 3. MOISTURE ELEMENT ME-100 IS MOUNTED IN THE DUCTWORK. MOISTURE ELEMENT ME-101 IS MOUNTED IN THE FAN (EQUIPMENT) ROOM.
 - 4.
 5. FOR CONTROL ROOM VENTILATION FILTER DETAILS SEE DWG. 10.00-41.

REFERENCE DWGS:
FLOW DIAGRAM SYMBOLS-----FM-14A

- SYMBOLS**
- AHU ----- AIR HANDLING UNIT
 - MOD ----- MOTOR OPERATED DAMPER
 - FD ----- FIRE DAMPER
 - VD ----- VIBRATION DETECTOR
 - FC ----- FAIL CLOSED
 - FO ----- FAIL OPEN



SYSTEM INTENDED FUNCTION BOUNDARY

COMPONENTS SUBJECT TO AMR
HEATING, VENTILATION AND AIR CONDITIONING SYSTEMS AMM-16

THIS IS A COMPUTER AIDED DESIGN DRAWING. A RECORD OF THE REVISIONS OF THIS DOCUMENT WITH APPROVAL DATES AND SIGNATURES, IS MAINTAINED IN THE FILES OF THE NEW YORK POWER AUTHORITY.

NO.	DATE	DESCRIPTION	BY	CHK	APP.
41	6/17/05	INCORPORATED DCR-05-01374 ER-JAF-05-16780	KMB	RVB	PJS
40	4/18/99	AS BUILT PER MOD. NO. M1-97-022		RGF	SKK
39	3/2/99	AS BUILT PER DCR-99-024		KM	TRM
38	9/2/99	AS-BUILT PER DCR-99-016		PJD	SKK
37	9/1/97	AS BUILT PER MOD. NO. M1-94-195		KF	SKK

NUCLEAR SAFETY RELATED

JAMES A. FITZPATRICK
NUCLEAR POWER PLANT

DESIGNER: JAF
DISCIPLINE ENG: JAF
DISCIPLINE MGR: JAF
PROJ APPROVAL: JAF
DATE: 6/17/05

SCALE: NONE
DWG NO: FB-45A
SHEET OF: 41

Entergy
Nuclear Services

NO.	DATE	DESCRIPTION	BY	CHK	APP.
0	3-10-06				

REVISIONS

LRA-FB-45A-0

CAD FILE: LRA-FB-45A_41.DGN
PLOT FILE: FB-45A_41.CAL