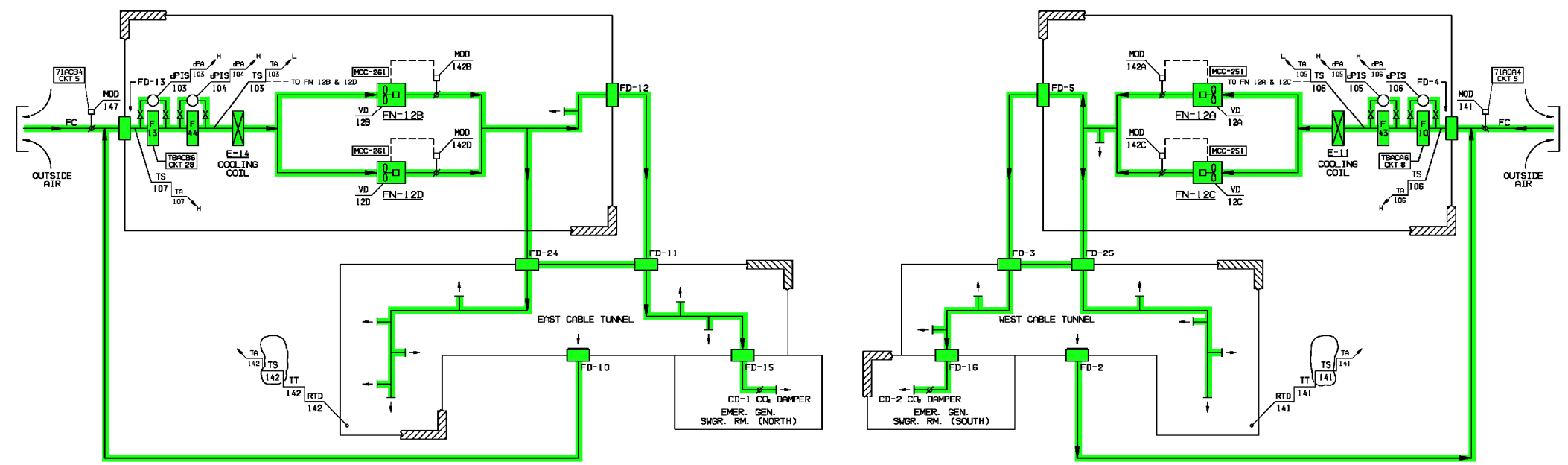


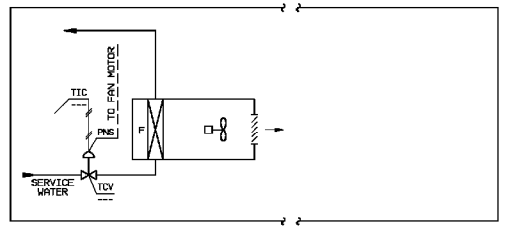
**NOTES**  
 1. ALL COMPONENT MARK NUMBERS PREFIXED 67 FOR SYSTEM 67 OR 69 FOR SYSTEM 69 UNLESS OTHERWISE NOTED.  
 2. FOR GENERAL NOTES & REFERENCE DWGS. SEE FB-16A.

FC - FAILS CLOSED  
 H - ALARMS ON HIGH TEMP. OR DIFFERENTIAL PRESSURE  
 L - ALARMS ON LOW TEMP. OR DIFFERENTIAL PRESSURE  
 AHU - AIR HANDLING UNIT



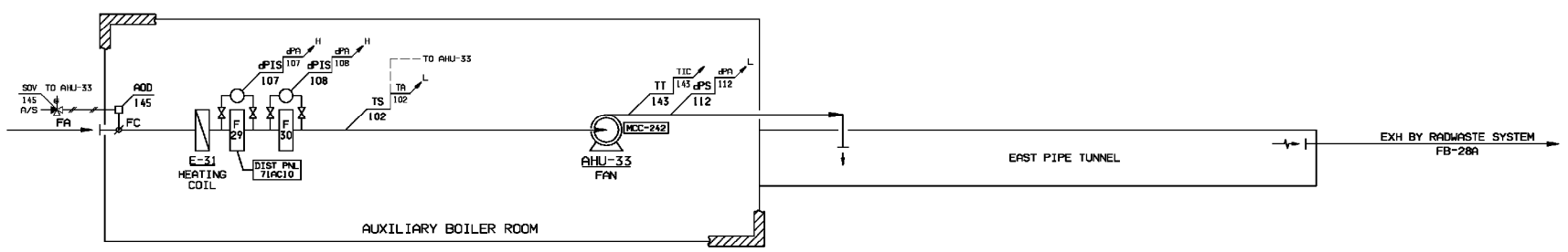
COOLING COIL NO.  
 E-11 (D-3)  
 E-14 (G-7)

EAST & WEST CABLE TUNNELS SYSTEM 67



67UC-45A OR 67UC-45B

SOUTH END OF WEST CABLE TUNNEL



EAST PIPE TUNNEL SYSTEM 69

SYSTEM INTENDED FUNCTION BOUNDARY

COMPONENTS SUBJECT TO AMR  
 HEATING, VENTILATION AND AIR CONDITIONING SYSTEMS AM-16

THE ORIGINAL TRACING FOR THIS DRAWING WAS PREPARED BY: STONE & WEBSTER CORP.

A RECORD OF THE ORIGINAL DOCUMENT WITH APPROVAL INITIALS/SIGNATURES AND THE P.E. SEAL AND SUBSEQUENT REVISIONS THEREOF WITH APPROVAL INITIALS/SIGNATURES IS MAINTAINED IN THE FILES OF THE NEW YORK POWER AUTHORITY.  
 THIS DOCUMENT WAS ELECTRONICALLY STORED AT REVISION 12.

REV NO	DATE	DESCRIPTION	BY	CHK'D	APP'D
16	5/27/04	AS-BUILT PER MOD. NO. N1-88-047	JG	RE	
15	9/16/03	THIS Dwg. IS REDRAWN & INCLUDES INFORMATION PREVIOUSLY SHOWN ON FB-16B REV. 13 & FIG. OF 62-1 REV. 6 AS-BUILT PER DCR 91-108	JG	RE	
14	2/3/03	THIS DRAWING IS REDRAWN & INCLUDES INFORMATION PREVIOUSLY SHOWN ON FB-16B REV. 13 & FIG. OF 62-1 REV. 5	JG	RE	

**JAMES A. FITZPATRICK**  
 NUCLEAR POWER PLANT

FLOW DIAGRAM  
 PIPE & CABLE TUNNEL  
 HEATING, VENT & COOLING  
 SYSTEMS 67 & 69

**New York Power Authority**

SCALE: NONE  
 DWG NO: FB-16B  
 SHEET OF: 16

NO.	DATE	DESCRIPTION	BY	CHK	APP
0	7-15-05				

REVISIONS

**LRA-FB-16B-0**

CAD FILE: LRA-FB-16B\_16.DGN  
 PLOT FILE: FB-16B\_16.CAL