

FIGURE 1
WESTERN NUCLEAR, INC.
SITE LOCATION MAP

SOURCE: WNI, 2006

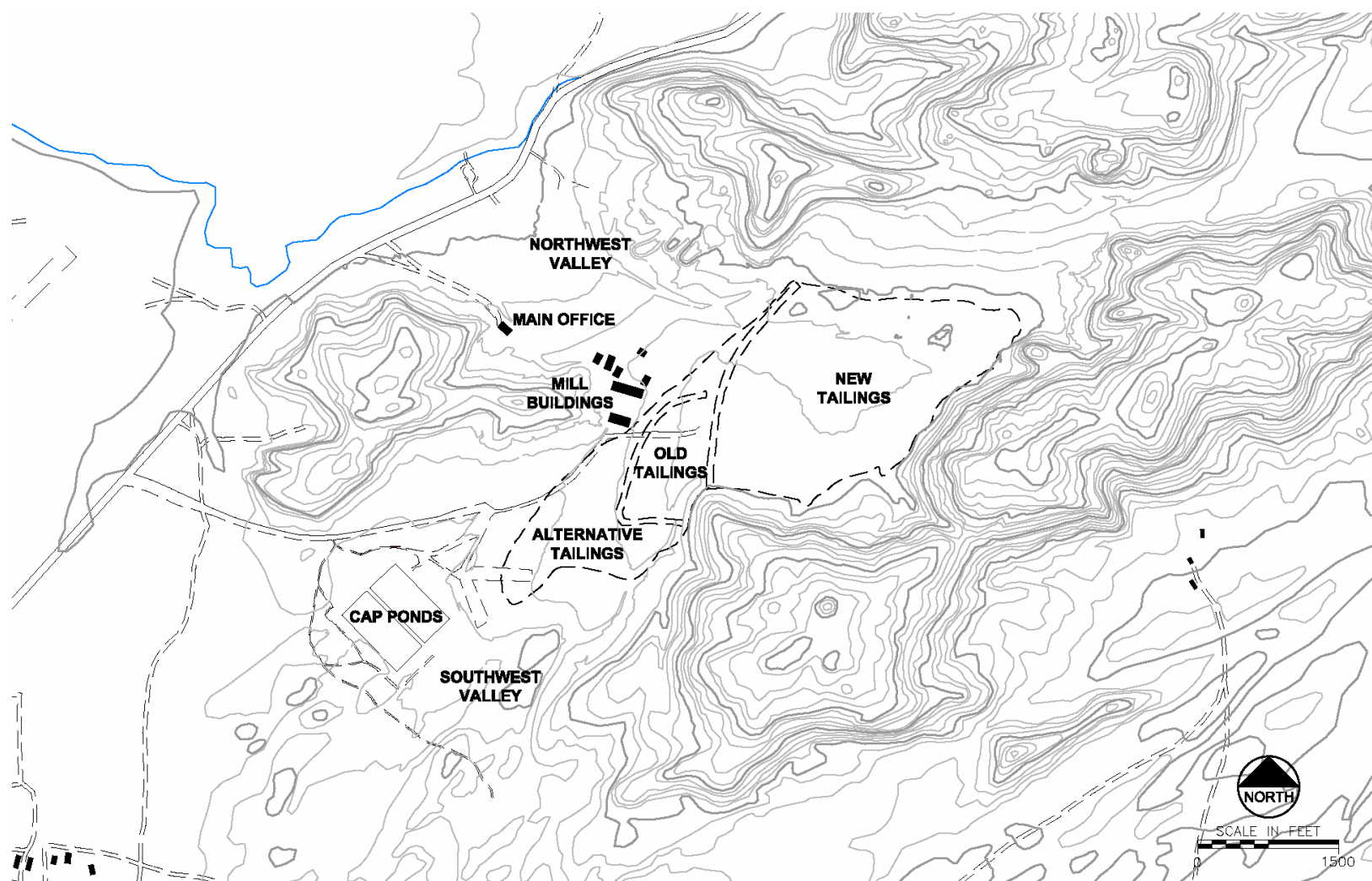
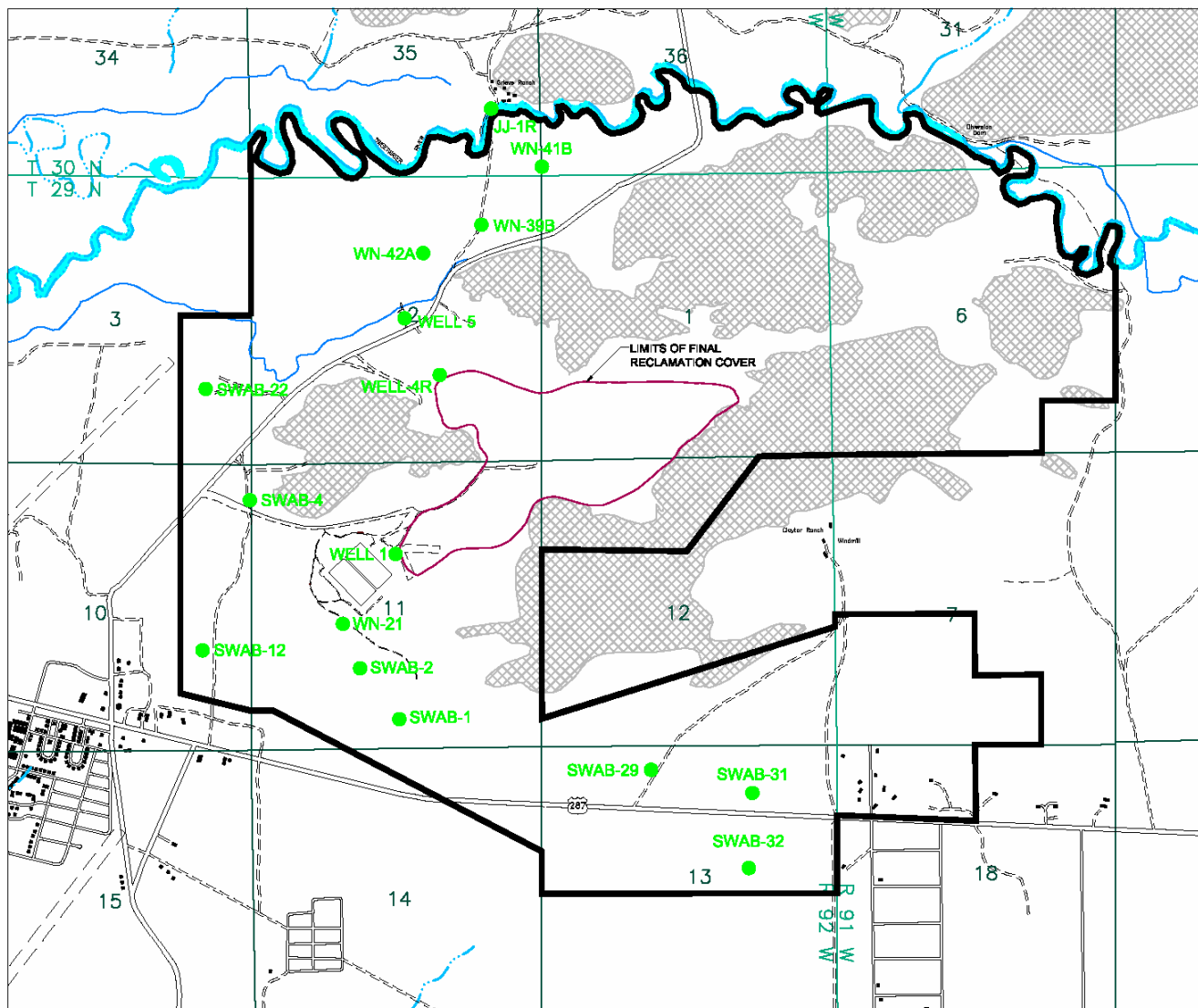


FIGURE 2
WESTERN NUCLEAR, INC.
SITE FEATURES MAP

SOURCE: WNI, 2006



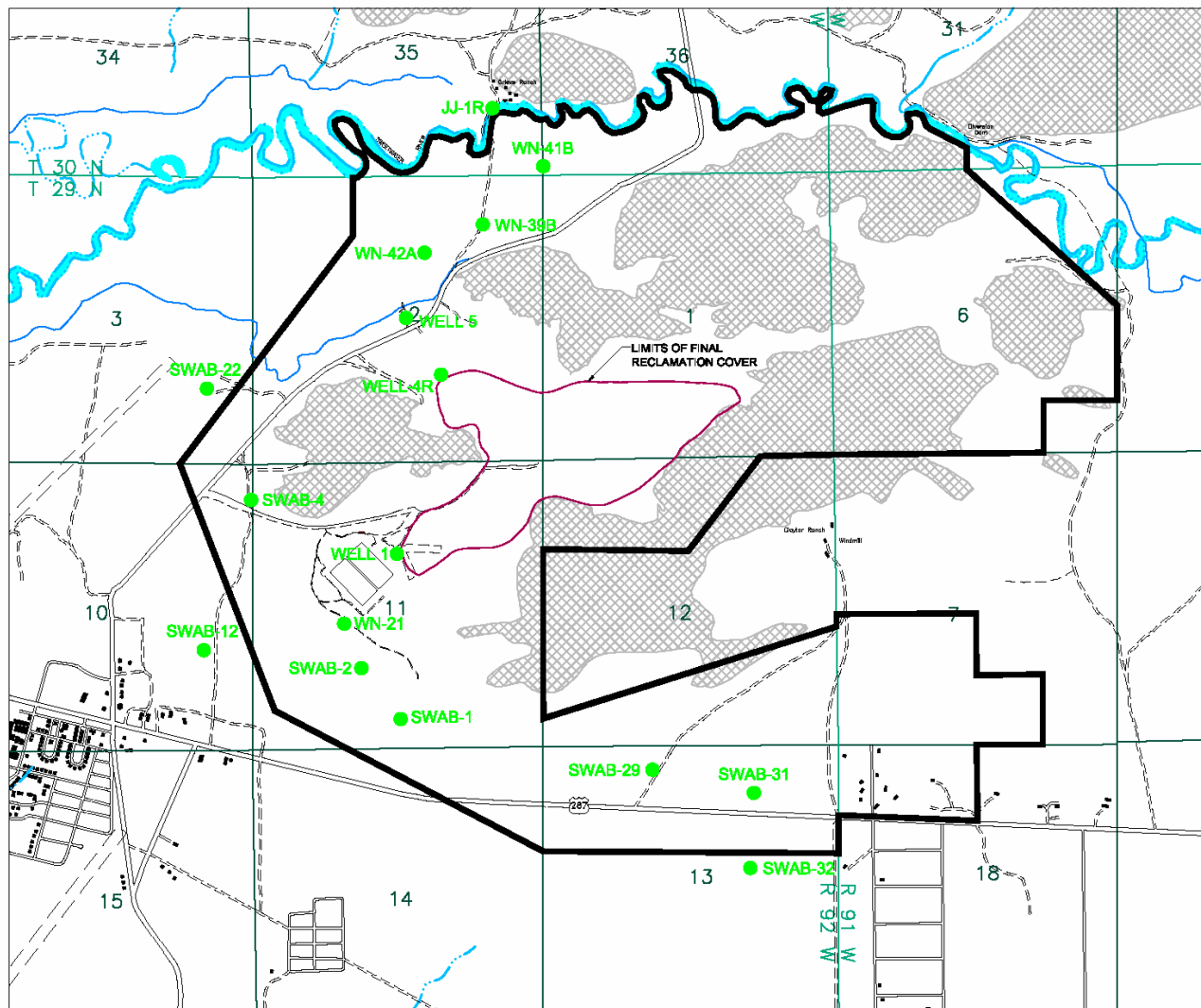
LEGEND

- EXISTING MONITORING WELLS
- PROPOSED LONG-TERM CARE BOUNDARY



SCALE IN FEET
0 3000

FIGURE 3
WESTERN NUCLEAR, INC.
LONG TERM SURVEILLANCE BOUNDARY
SOURCE: WNI, 2003



LEGEND

● EXISTING MONITORING WELLS

— PROPOSED LONG-TERM CARE BOUNDARY



SCALE IN FEET

0 3000

FIGURE 4
WESTERN NUCLEAR, INC.
COMPLIANCE MONITORING NETWORK
 SOURCE: WNI, 2003

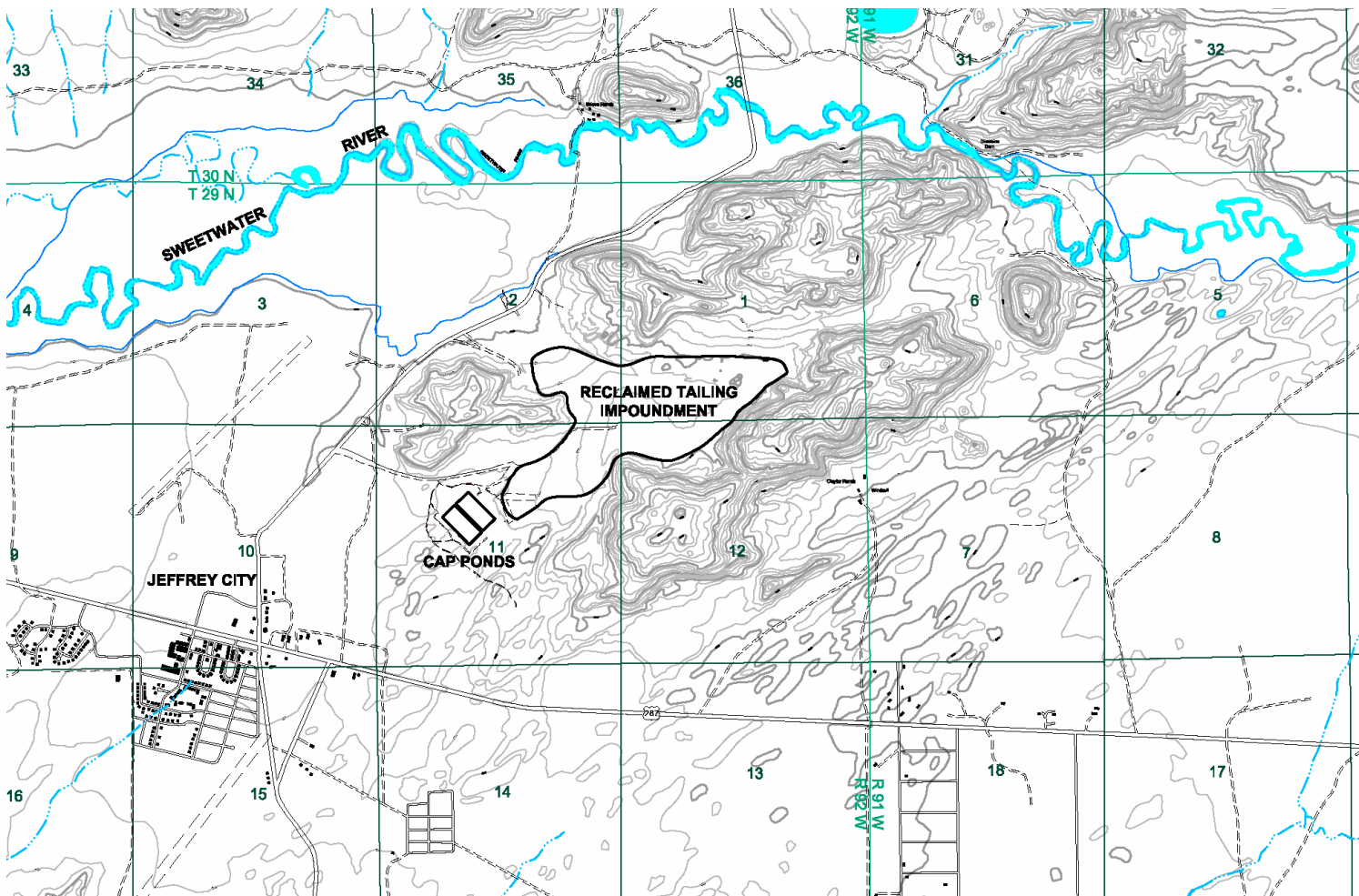
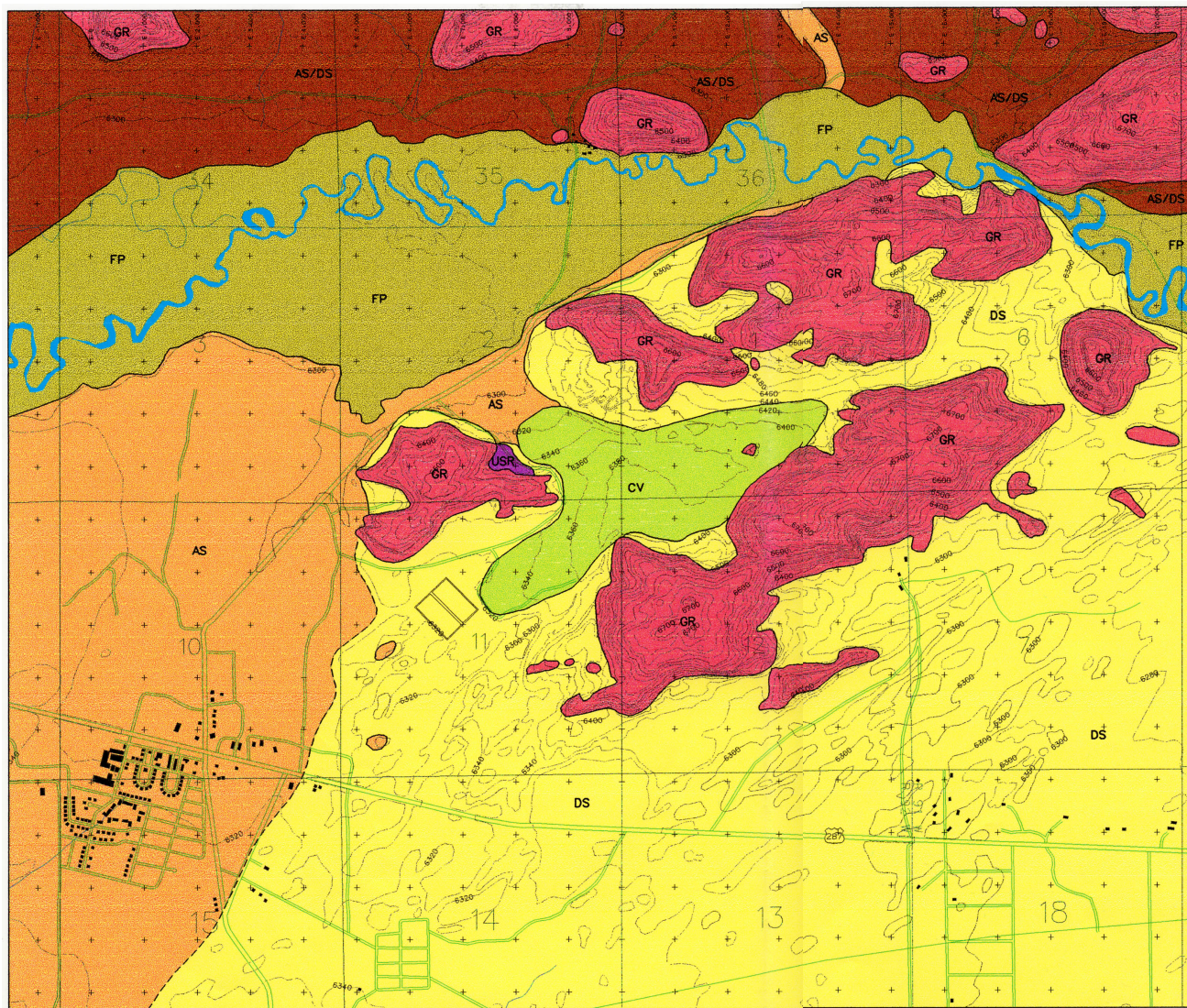


FIGURE 5
WESTERN NUCLEAR, INC.
SITE TOPOGRAPHIC MAP

SOURCE: WNI, 2006



LEGEND:

- CV** TAILING COVER
(EXTENT IN LATE 1997)
- FP** SWEETWATER RIVER ALLUVIUM
- AS** ALLUVIUM
- DS** EOLIAN DEPOSITS
(MAY CONTAIN LOCAL EXPOSURES OF ALLUVIUM)
- AS/DS** ALLUVIUM AND EOLIAN UNDIFFERENTIATED
- USR** UPPER SPLIT ROCK UNIT
- GR** PRECAMBRIAN GRANITE
- CONTACT
- - - DASHED WHERE APPROXIMATELY LOCATED

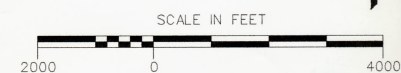


FIGURE 6
WESTERN NUCLEAR, INC.
SITE GEOLOGIC MAP

SOURCE: WNI, 2006

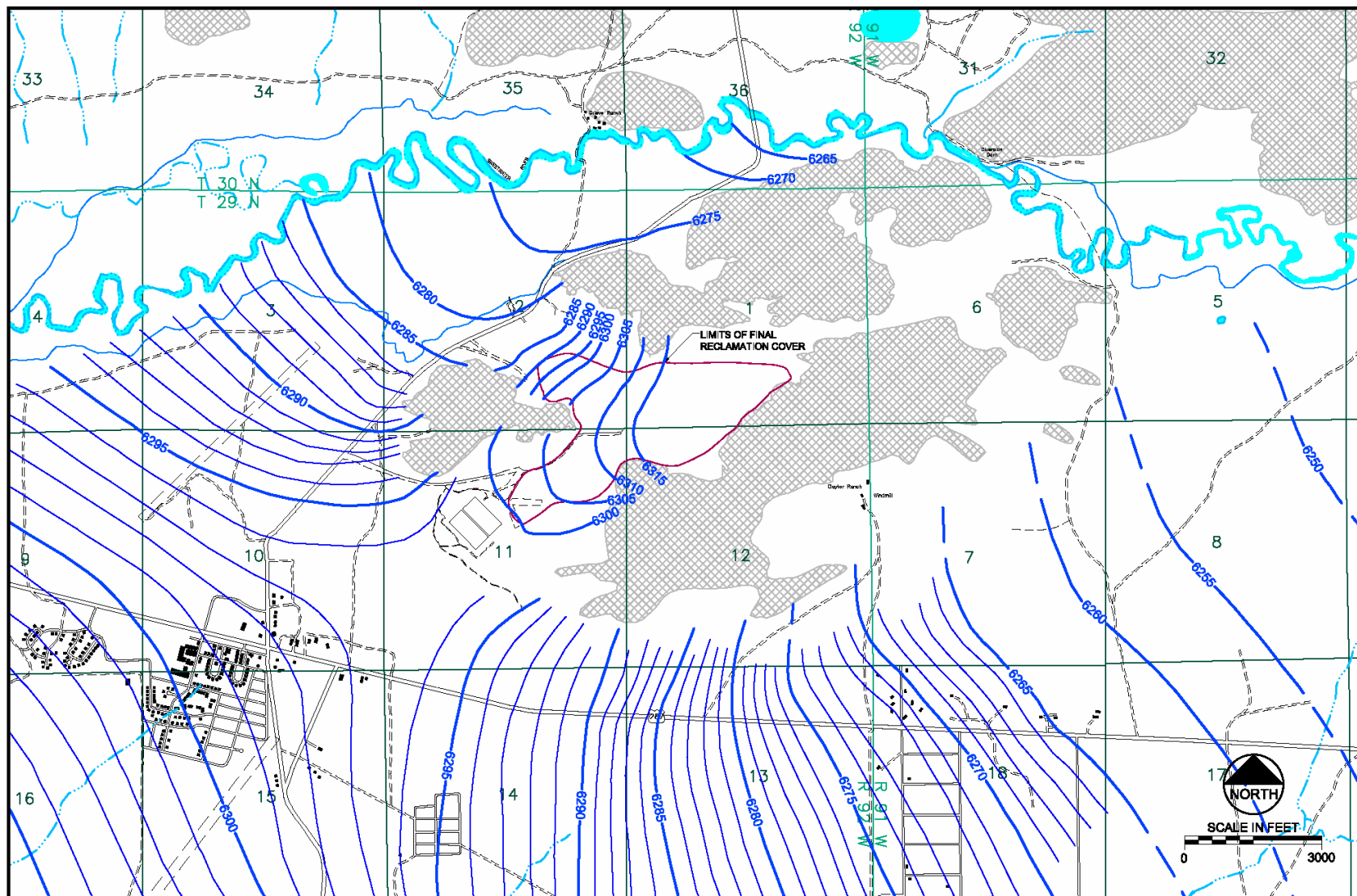


FIGURE 7
WESTERN NUCLEAR, INC.
POTENTIOMETRIC SURFACE MAP

SOURCE: WNI, 2006

CONTOUR INTERVAL = 1 FOOT

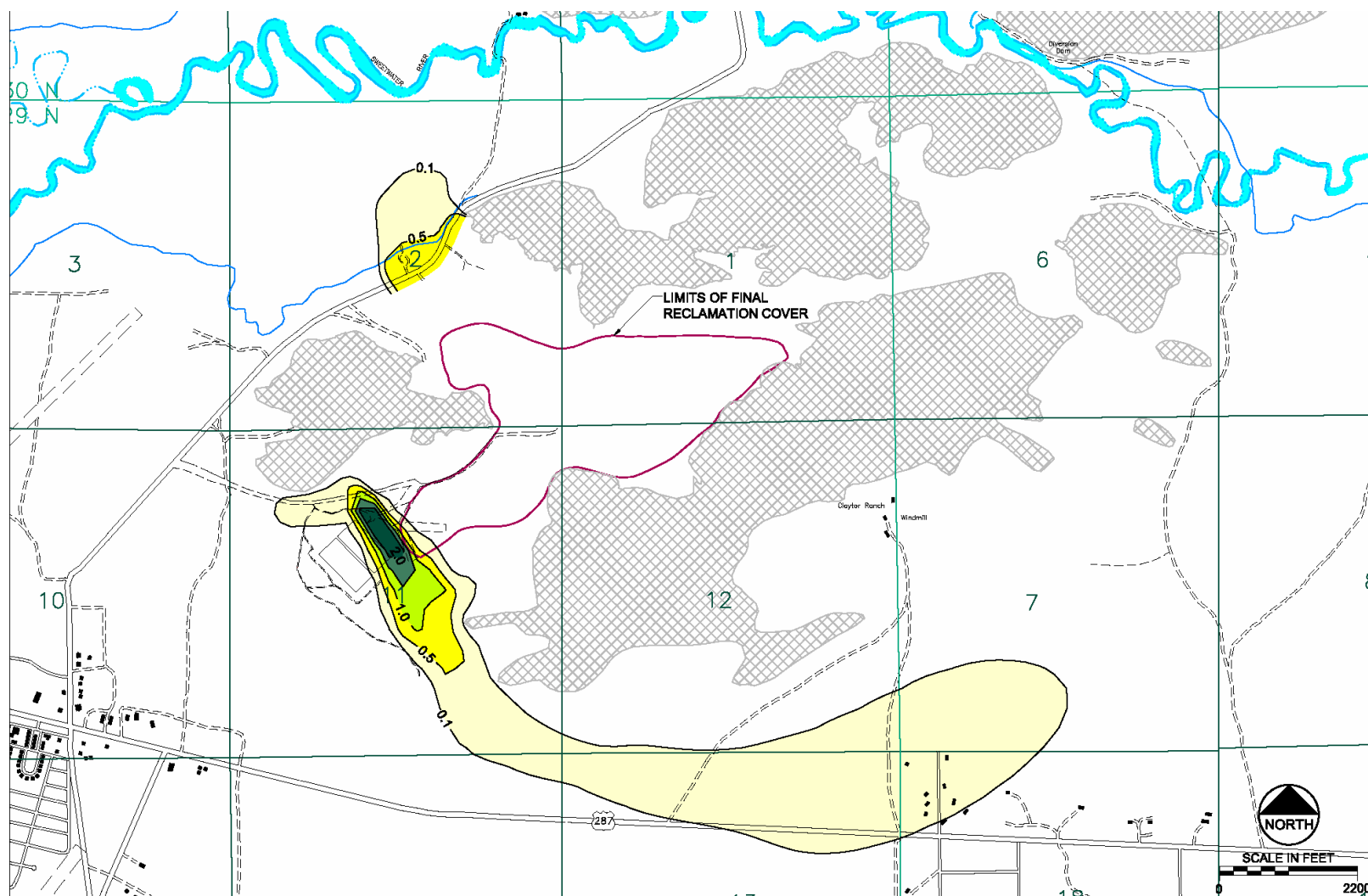
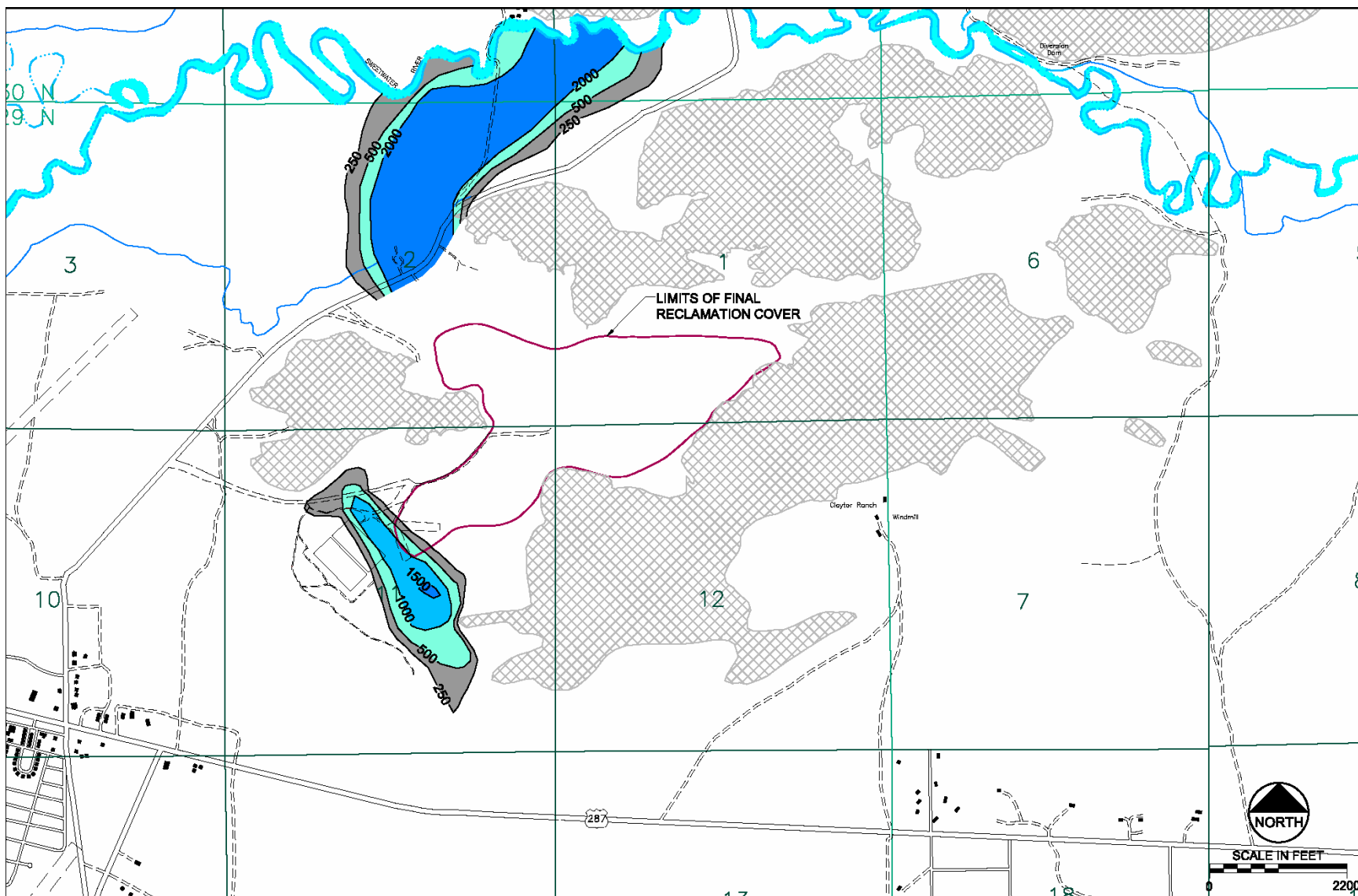


FIGURE 8
WESTERN NUCLEAR, INC.
MT3DMS MODEL RESULTS
URANIUM AT YEAR 1000
 SOURCE: WNI, 2003

CONCENTRATION IN MG/L



CONCENTRATION IN MG/L

FIGURE 9
WESTERN NUCLEAR, INC.
MT3DMS MODEL RESULTS
SULFATE AT YEAR 1000
 SOURCE: WNI, 2003