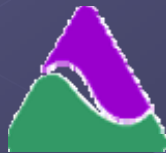


# UR Energy Great Divide Basin Baseline Program Update

## Summer 2006

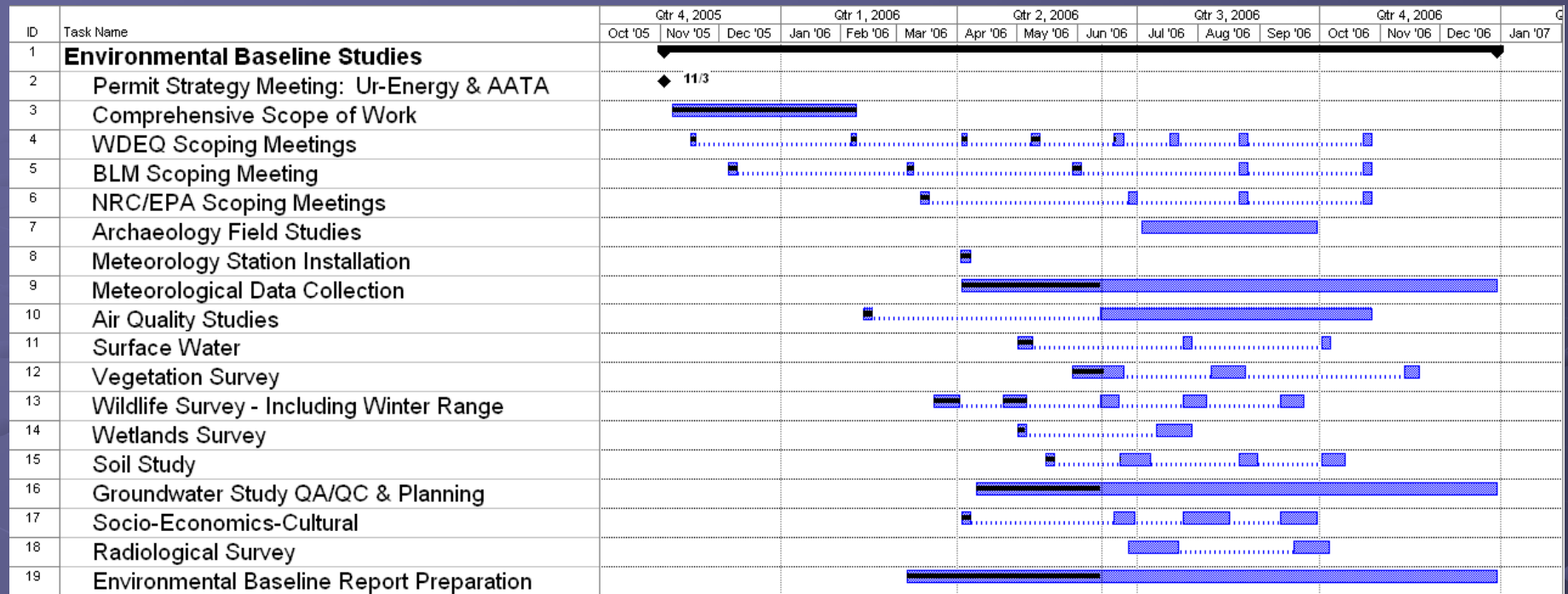


AATA International, Inc.  
Fort Collins, Colorado, USA

# Project Permitting Schedule



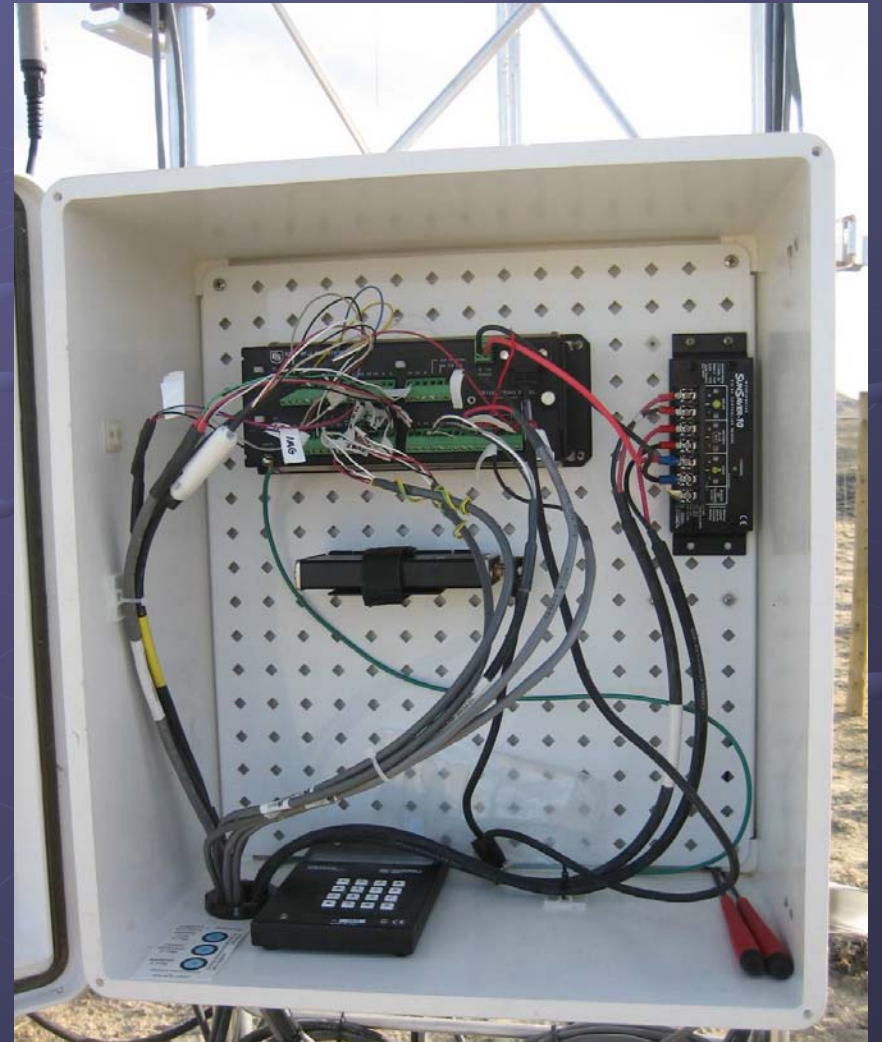
# Baseline Surveys Schedule Update



# Meteorology & Air Quality

- Meteorological station installed & data collection started April 2006
- Web Access of Quasi Realtime Meteorological Data will be Available
- 24-hr Mini-Vol PM 10 Sampling (in Progress)









# Wildlife Surveys

- Sage Grouse (Complete)
- Raptors (Complete)
- Breeding Birds (Complete)
- Mountain Plover (Complete)
- Black-footed Ferret (Starts in July)
- White-tailed Prairie Dog (Starts in July)





**Sage Grouse – 2.5 miles North of Lost Creek**





**White-tailed prairie dog colony on the eastern portion of Lost Soldier**



## Short-horned Lizard on Lost Creek



# Surface Water

- Lost Soldier Creek is the Only Perennial Creek (augmented flow)
- Numerous Intermittent Draws (18 Automatic Samplers Installed)
- First Set of Samples (7 along the lost Soldier Creek) Collected in April
- Two More Sets of Samples will be Collected (Quarterly) in 2006





**BLM Augmented Flow to Lost Soldier Creek**

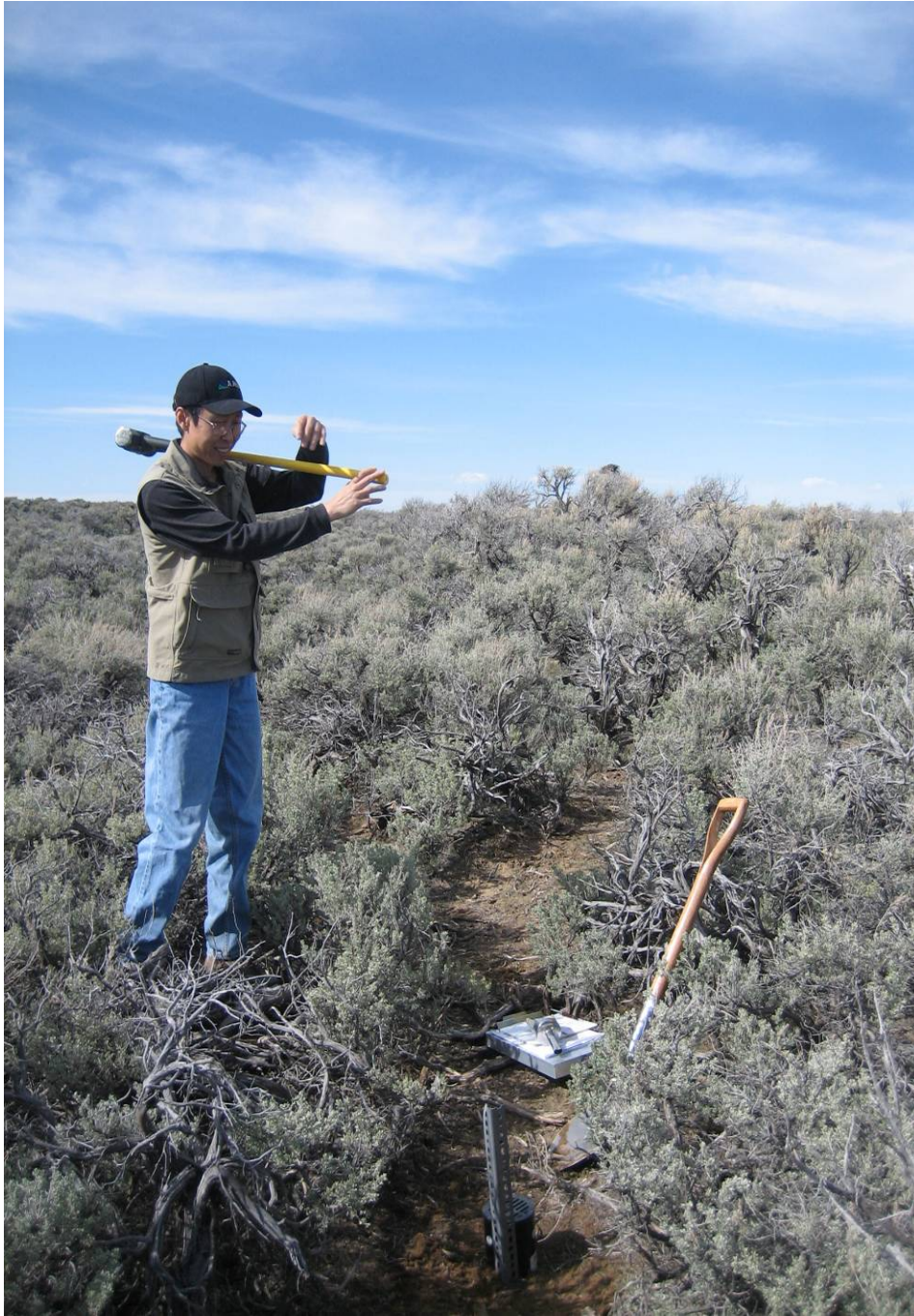














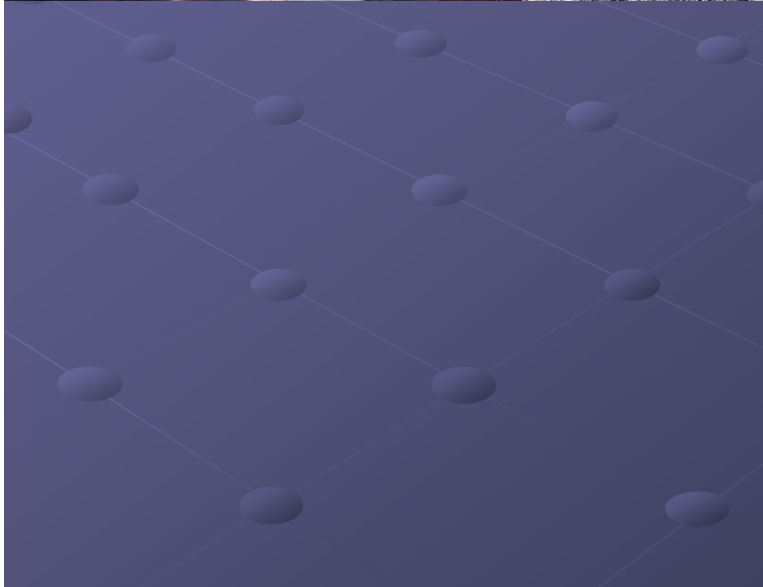
# Soil Survey

- Completed Site Reconnaissance and Landform Unit Mapping in May
- Field Team Currently on Site (Soil Type Characterization & Sampling)
- 36 Soil Pits will be Dug for Soil Profile Characterization
- 54 Soil Samples will be Collected and Analyzed

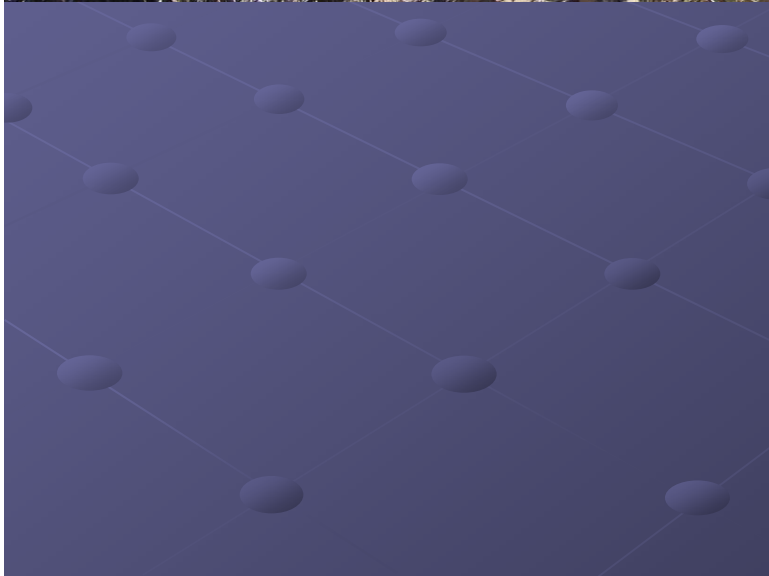












# Vegetation Surveys

- Site Reconnaissance completed in May
- Phase I Survey of Lost Creek Claim Area Completed
- Phase I Survey of Lost Soldier Area Starts in July
- Phase II Survey Starts in August for both Properties





Sagebrush Habitat (Lost Creek)



Cushion Plant Community (Lost Soldier)



Riparian and Wetland Vegetation (Lost Soldier)



Sagebrush Steppe Vegetation (Lost Soldier)



# Wetland & Aquatic Life

- Site Reconnaissance on Wetlands Completed in May
- Wetlands Identified along Lost Soldier Creek
- No Wetland on the Lost Creek Property
- **Site Reconnaissance on Aquatic Life Completed in June**













**Active Beaver Colony in Lost Soldier Creek**









**Dragonfly (Odonate) Larva**



# Baseline Groundwater Quality & Aquifer Testing

- Drilling started 2 weeks ago at Lost Soldier
- Permission of WDEQ, State Engineer, & BLM
- 34 wells will be Drilled (17 on each property)
- 3 Sets of Water Quality Samples will be collected in 2006













15 10:02 AM



# Other Tasks

- **Archaeology - Field Surveys will Start in Three Weeks**
- **Radiological Survey – Field Work will Start in Three Weeks**
- **Socio-Economics – Starting in Late Aug. – Early Sept.**



# Thanks for your attention!

- Ur Energy USA
- AATA International, Inc.
- Hydro-Engineering LLC