

PRA Standards

The View from Below (The Licensee Perspective)

Gerald Sowers

PRA Section Leader

Palo Verde Nuclear Generating Station



RIC 2006
Session W4D
Risk Informed Activities
March 8, 2006



PRA Standards

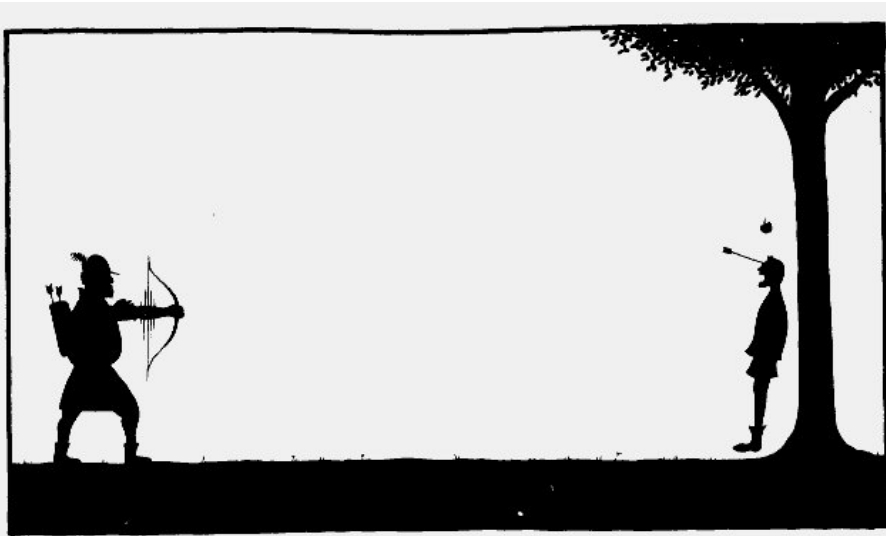
- Internal Events (ASME, RA-S–2002)
- External Events (ANS 58.21)
- Fire
- Low Power and Shutdown (ANS 58.22)

PVNGS Objective

- Maintain a PRA that is acceptable:
 - For required applications
 - Maintenance Rule
 - ROP – MSPI
 - Significance Determinations
 - For Optional Applications
 - AOT extensions
 - Risk Informed ISI
 - Valve Programs (MOV_s, AOV_s)

What's Acceptable

If I know what the target is, I can hit it!
(With enough practice.)



How do I
Define the
Target?

To Hit The Target

Regulatory Guide 1.200

**NRC Phased Approach PRA
Quality – Phase II Application
Specific Requirements**

Applicable Standards

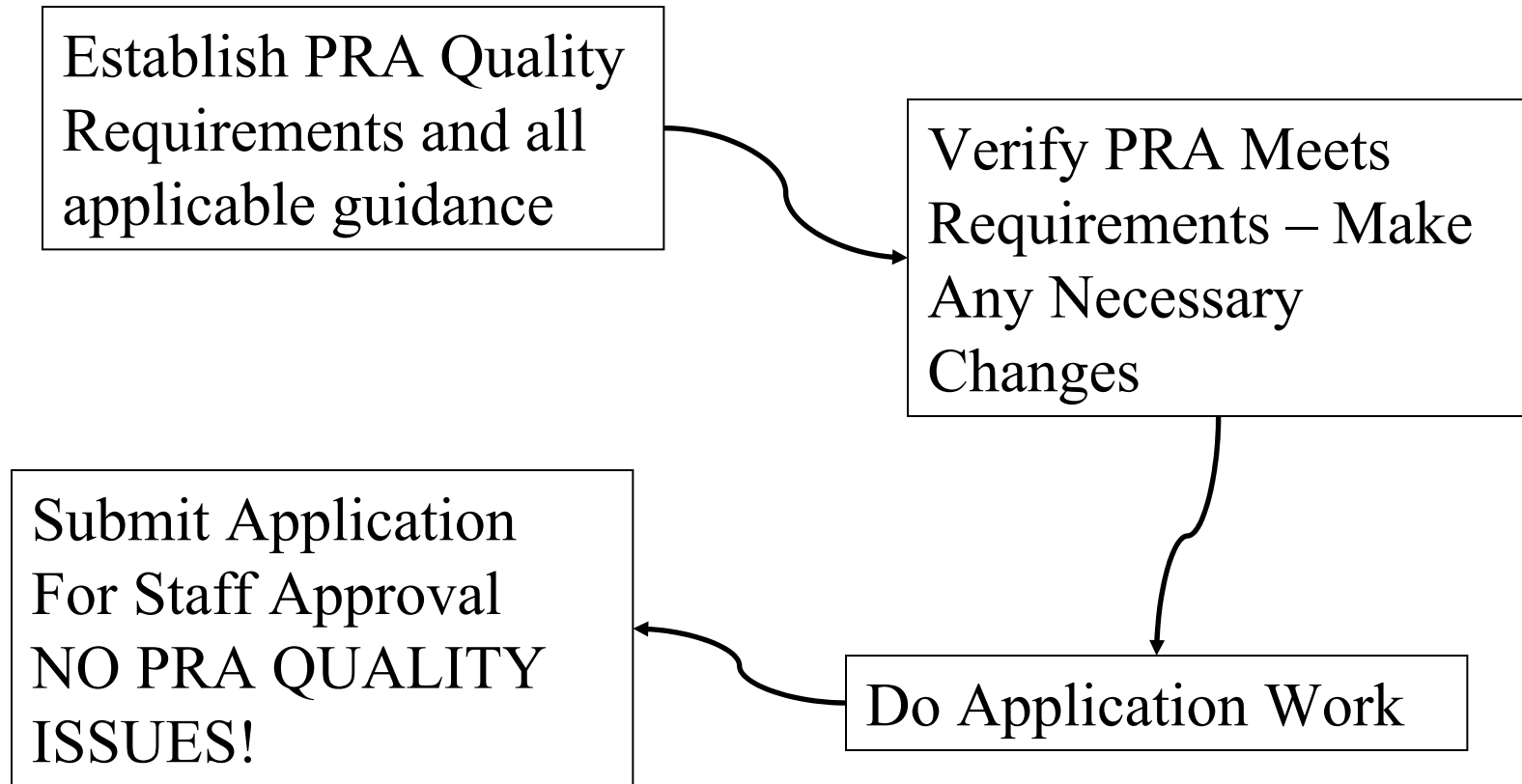
- Internal Events
- Fire
- External Events
- Low Power and Shutdown

Implementing Guidance

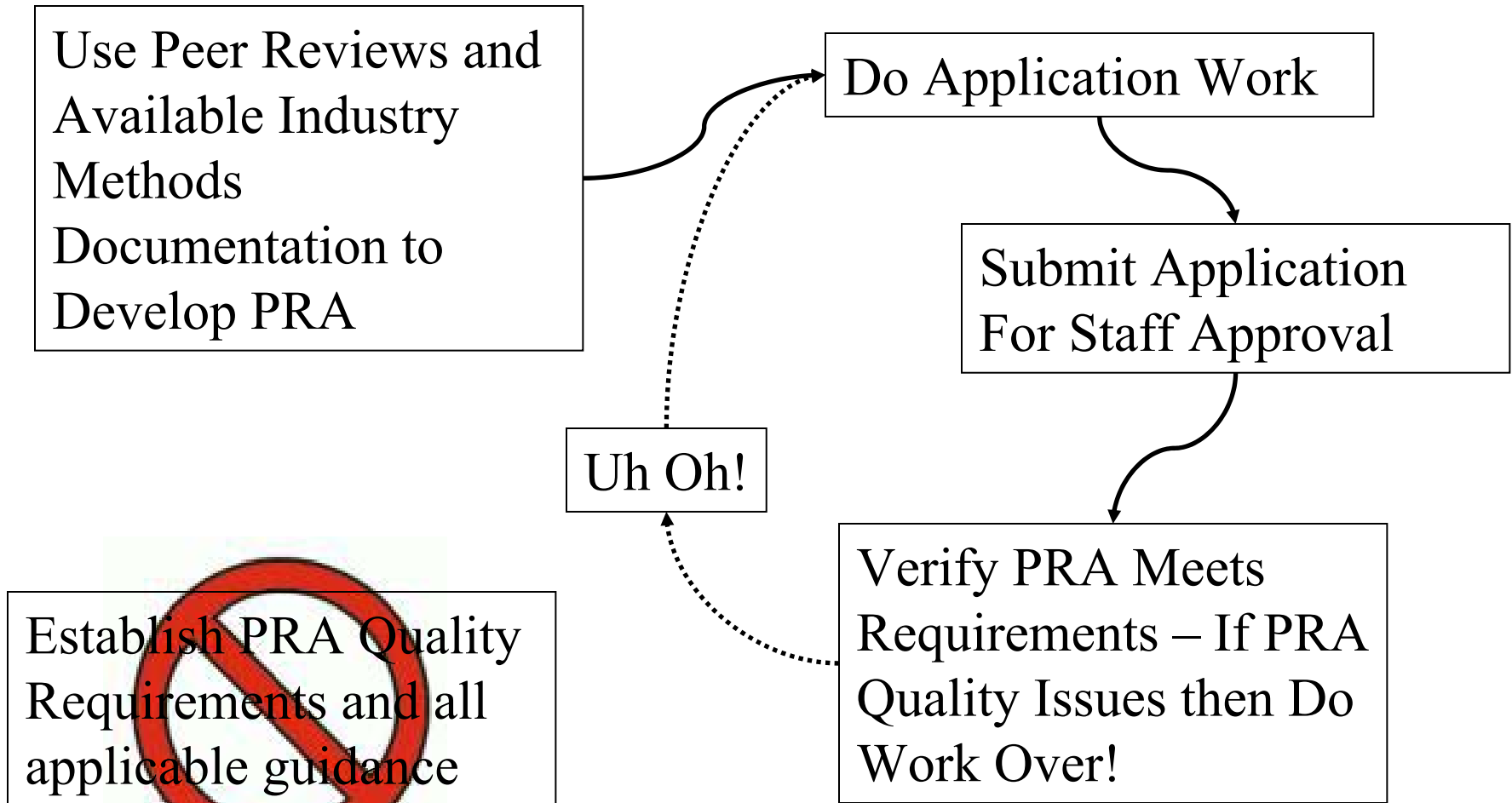
- EPRI
- Owners Group
- NRC



The Perfect World



The Real World



What I (We) Need

- Standards that validate current accepted methods, faster
 - PVNGS has a Fire PRA, I would like to update it in 2006
 - EPRI just released a new fire method I can use for guidance
 - Fire Standard in 2007?
 - Reg Guide 1.200 endorsement in ?
 - I do not want to waste my 2006 effort on the wrong target.
- Consensus Methods
 - Common Cause – Good, one way, one data set, good cooperation
 - Loss of Offsite Power Initiating Event Frequency – Bad, a lot of good work, but too many individual efforts (EPRI, WOG, NRC)
- Application Specific - Phase II PRA Requirements