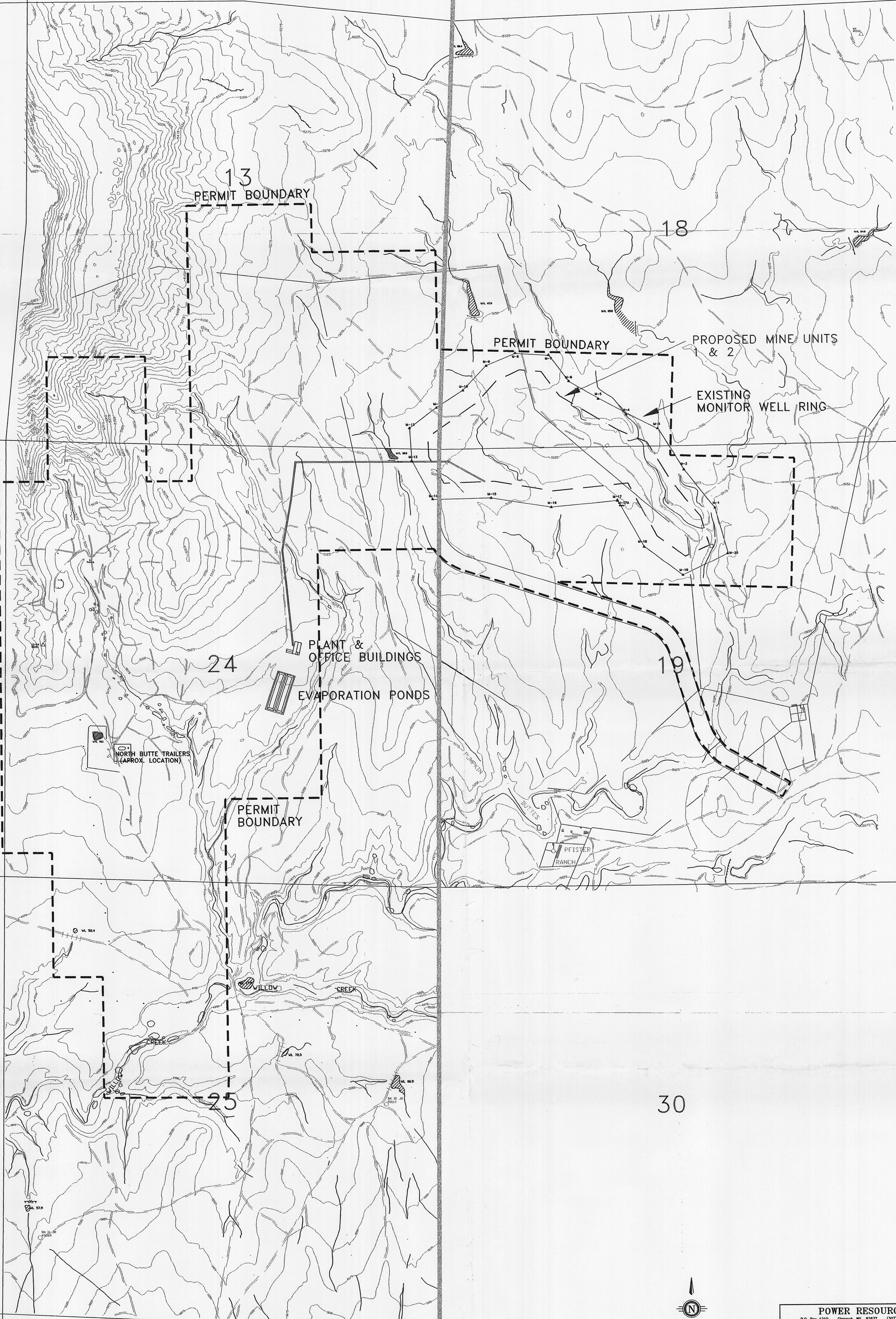


R. 76 W.

R. 75 W.



T. 44 N.



0' 500'
CONTOUR INTERVAL = 25'

D-06

POWER RESOURCES, INC.		
P.O. Box 1210, Geneva, WY 82037 (307) 336-6541 (307) 235-1628		
REVISIONS		
NO.	DATE	BY
CAMPBELL COUNTY, WYOMING		
DES. BY	DATE	APPR. BY

NORTH BUTTE ISL PROJECT
SITE PLAN LAYOUT