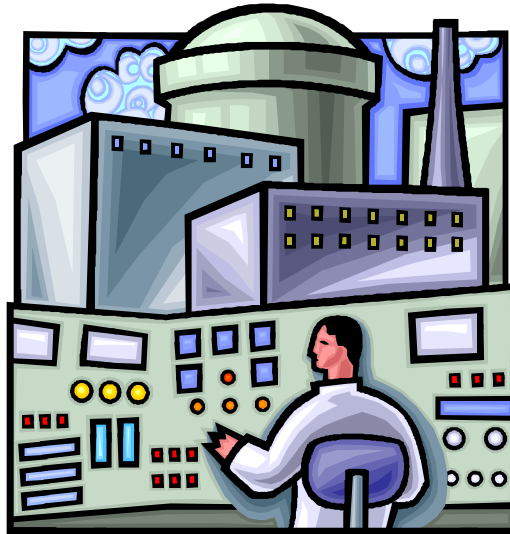


DG 1145 – Section C.I.16  
Technical Specifications



17 May 2006

John E. Thorp, U.S. Nuclear Regulatory Commission  
Division of New Reactor Licensing

# Overview

- Section rationale and basis
- Section references
- Chapter 16 highlights
- Pre-Workshop Comments
- Referencing a certified design
- Breakout group Q&A

**ML061030026**

# Rationale and Basis

- Rationale:
  - Provide guidance for 10 CFR Part 52 applicants.
- Technical basis:
  - Regulatory Guide 1.70 REV 3 NOV 1978
  - Standard Review Plan (NUREG-0800)
  - NEI 04-01E input

# References

- 10 CFR Parts 50, 52
  - 1995 Rule Change to 10 CFR 50.36
- Regulatory Guides.
- NUREGs
  - NUREG 1430-1434
- USNRC Statement of Considerations, Technical Specifications for Facility Licensees; Safety Analysis Reports, Federal Register, 33 FR 18612. DEC 1968

# Chapter 16 Highlights

- Include Tech Specs and Bases in Application
- Tech Specs part of License, separate from SAR
- Bases are not part of Tech Specs, and are separate from SAR, but...must be consistent with SAR
  - Justify significant technical deviations from DCD Bases
- Conformance to approved generic TS for the plant design being built
- Where applicable, ensure consistency with Standard TS (NUREG 1430-1434)

# Chapter 16 Highlights, cont.

- Justify site-specific deviations
- Safety Limits, LCO, LSSS, Design Features, Surv Reqts, Admin Reqts
- Include LCOs for all Structures, Systems, & Components (SSCs) and Parameters that meet 10 CFR 50.36(c)(2)(ii) criteria
- Use of PRA, Risk to inform development of and changes to Tech Specs
  - for risk-based deviations or if DCD contains risk logic/arguments

# TS Sections

- 1.0 Definitions
- 2.0 Safety Limits
- 3.0 LCO and SR Applicability
- 3.1 Reactivity Control Systems
- 3.2 Power Distribution Limits
- **3.3 Instrumentation**
- 3.4 Reactor Coolant System
- **3.5 Emerg Core Cooling Sys**
- **3.6 Containment Systems**
- 3.7 Plant Systems
- **3.8 Electrical Power Sys**
- 3.9 Refueling Systems
- 3.10 Special Operations
- 4.0 Design Features
- 5.0 Administrative Controls

# Pre-Workshop Comments

- Description of controls & processes for preparing and changing Tech Specs
- Concern for use of RG 1.177
- Deviations from certified generic design OR standard technical specifications
- Clarity of guidance—applications that do or do not reference a certified design



## Description of controls & processes for preparing and changing Tech Specs

- The guidance in question was based on SRP Section 16.1 for Risk-informed TS
- Submission of applicant's internal procedures for TS preparation not intended
- Focus on justifying differences from Generic Certified TS (GCTS) and associated Bases (TS Sections 2.0 through 3.10)
- Justifications may include design changes, revised accident analysis, risk-insights, generic changes to the Standard TS NUREGs, etc.

# Referencing a Certified Design

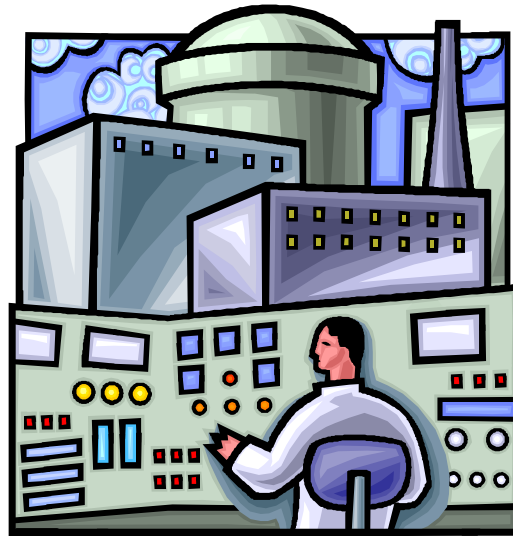
**In the case of a COL application referencing a certified design, which areas will be reviewed by the NRC staff?**

**Answer:** Deviations from certified design and any information not provided at the DC stage [“Bracketed” info in TS and Bases]

# COL Stage Details & Bracketed Information

- LSSS values (i.e., set-point methodology)
- Primary Containment Leak Rate Test Program
- Methodologies for PTLR and ODCM
- Topical reports for COLR approved methodologies
- Incorporation of applicable generic changes to the Standard TS NUREGs – including RI TS Initiatives
- Surveillance acceptance criteria (e.g., VFTP)
- Requirements for site-specific systems considered
- RTNSS controls

# Breakout Group



**Questions/comments regarding  
Section C.I.16 ?**