



UNITED STATES
NUCLEAR REGULATORY COMMISSION
REGION IV
611 RYAN PLAZA DRIVE, SUITE 400
ARLINGTON, TEXAS 76011-4005

May 17, 2006

Rick A. Muench, President and
Chief Executive Officer
Wolf Creek Nuclear Operating Corporation
P.O. Box 411
Burlington, KS 66839

**SUBJECT: MEETING SUMMARY FOR END-OF-CYCLE PERFORMANCE
ASSESSMENT OF WOLF CREEK GENERATING STATION**

Dear Mr. Muench:

This refers to the end-of-cycle performance assessment meeting conducted at the Coffey County Library in Burlington, Kansas, on May 11, 2006. Topics discussed during the meeting included the Reactor Oversight Process and the safety performance at Wolf Creek. The meeting attendance list and a copy of the slides presented during the meeting are included as Enclosures 1 and 2.

In accordance with 10 CFR 2.390 of the NRC's "Rules of Practice," a copy of this letter and its enclosures will be made available electronically for public inspection in the NRC Public Document Room or from the Publicly Available Records (PARS) component of NRC's document system (ADAMS). ADAMS is accessible from the NRC Web site at <http://www.nrc.gov/reading-rm/adams.html> (the Public Electronic Reading Room).

Should you have any questions concerning this matter, we will be pleased to discuss them with you.

Sincerely,

William B. Jones, Chief
Project Branch B
Division of Reactor Projects

Docket: 50-482
License: NPF-42

Enclosures:

1. Meeting Attendance List
2. NRC Presentation

Wolf Creek Nuclear Operating Corporation

-2-

cc w/enclosures:

Vice President Operations/Plant Manager
Wolf Creek Nuclear Operating Corp.
P.O. Box 411
Burlington, KS 66839

Jay Silberg, Esq.
Pillsbury Winthrop Shaw Pittman LLP
2300 N Street, NW
Washington, DC 20037

Supervisor Licensing
Wolf Creek Nuclear Operating Corp.
P.O. Box 411
Burlington, KS 66839

Chief Engineer
Utilities Division
Kansas Corporation Commission
1500 SW Arrowhead Road
Topeka, KS 66604-4027

Office of the Governor
State of Kansas
Topeka, KS 66612

Attorney General
120 S.W. 10th Avenue, 2nd Floor
Topeka, KS 66612-1597

County Clerk
Coffey County Courthouse
110 South 6th Street
Burlington, KS 66839-1798

Chief, Radiation and Asbestos
Control Section
Kansas Department of Health and
Environment
Bureau of Air and Radiation
1000 SW Jackson, Suite 310
Topeka, KS 66612-1366

Fred Rowley, Vice Chairman
Coffey County Commissioner
110 South 6th Street
Burlington, KS 66839

Gene Merry
Coffey County Commissioner
110 South 6th Street
Burlington, KS 66839

Tim Sipe
Coffey County Commissioner
110 South 6th Street
Burlington, KS 66839

Larry Crotts
Coffey County Commissioner
110 South 6th Street
Burlington, KS 66839

Kraig Kirchner
Coffey County Commissioner
110 South 6th Street
Burlington, KS 66839

Randy Rogers, Sheriff
Coffey County Sheriff's Dept.
110 South 6th Street
Burlington, KS 66839

Rebecca Jewett
Coffey County Emergency
Preparedness
110 South 6th Street
Burlington, KS 66839

The Honorable Rick Raymer
Mayor, City of Burlington
City Hall
P.O. Box 207
Burlington, KS 66839

The Honorable Larry Kelley
Mayor, City of Gridley
P.O. Box 182
Gridley, KS 66852

The Honorable Bill Freeman
Mayor, City of LeRoy
713 Main Street
LeRoy, KS 66857

Wolf Creek Nuclear Operating Corporation

-3-

The Honorable Ed Fisher
Mayor, City of Lebo
P.O. Box 14
Lebo, KS 66856-0014

Lloyd E. Krase, Administrator
Kansas Division of Emergency Mgt.
2800 SW Topeka Blvd.
Topeka, KS 66611-1287

The Honorable Mark Petterson
Mayor, City of New Strawn
City Hall
P.O. Box 922
New Strawn, KS 66839-0922

Allen County Commissioners
1 North Washington
Iola, KS 66749

The Honorable Craig Meader
Mayor, City of Waverly
P.O. Box 308
Waverly, KS 66871

Allen County Emergency
Preparedness Coordinator
Allen County Courthouse
P.O. Box 433
Iola, KS 66749

Lyon County Emergency
Preparedness Coordinator
425 Mechanic St.
Emporia, KS 66801

Anderson County Emergency
Preparedness Coordinator
315 Orange Street
Garnett, KS 66032

Public Service Commission
ATTN: Director
301 E. High
P.O. Box 360
Jefferson City, MO 65102

Dick Hainje, Regional Director
FEMA Region VII
Department of Homeland Security
9221 Ward Parkway, Suite 300
Kansas City, MO 64114-3372

Electronic distribution by RIV:
 Regional Administrator (**BSM1**)
 DRP Director (**ATH**)
 DRS Director (**DDC**)
 DRS Deputy Director (**RJC1**)
 Senior Resident Inspector (**SDC**)
 Resident Inspector (**TBR2**)
 SRI, Callaway (**MSP**)
 Branch Chief, DRP/B (**WBJ**)
 Senior Project Engineer, DRP/B (**RAK1**)
 Team Leader, DRP/TSS (**RLN1**)
 RITS Coordinator (**KEG**)

SUNSI Review Completed: Y ADAMS: Yes No Initials: Y
 Publicly Available Non-Publicly Available Sensitive Non-Sensitive

R:\ REACTORS\EOC and Midcycle\EOC Meeting Summaries\Held in 2006\WC5-11-06MS-EOC.wpd

RIV/SPE:DRP/B	C:DRP/B		
RAKopriva;dlf	WBJones		
<i>WBJ</i>	<i>Y</i>		
5/17/06	5/17/06		

OFFICIAL RECORD COPY

T=Telephone

E=E-mail

F=Fax

END-OF-CYCLE MEETING ATTENDANCE

LICENSEE/FACILITY	Wolf Creek Generating Station
DATE/TIME	May 11, 2006 / 6:30 PM - 9:00 PM
LOCATION	Coffey County Library 410 Juniatta Street Burlington, KS 66839
NAME (PLEASE PRINT)	ORGANIZATION
WILLIAM MULLENBURG	WOLF CREEK
DAVID PHELPS	WESTAR ENERGY
JENNY HAGEMAN	WCNOC
Rick Frevert	Lyon Co. EM,
Shirley Allen	NRC
Diane Hooper	WCNOC

END-OF-CYCLE MEETING ATTENDANCE

LICENSEE/FACILITY	Wolf Creek Generating Station
DATE/TIME	May 11, 2006 / 6:30 PM - 9:00 PM
LOCATION	Coffey County Library 410 Juniatta Street Burlington, KS 66839
NAME (PLEASE PRINT)	ORGANIZATION
William B. Jones	NRC
Travis Rhoades	NRC
Jesus Cochran	Cochran NRC
Glen Neises	WCNOC
Edward Ray	WCNOC
Matt Sunseri	WCNOC
Rick Muench	WCNOC
Cheryl Muench	WCNOC
Russell Moon	WCNOC
Wendy Pankey	WCNOC
BECKY JEWETT	COFFEY COUNTY EP.
Jennifer Kunk	WCNOC
Thomas Conley	KDHE

ENCLOSURE 2

Wolf Creek Annual Assessment Meeting

Reactor Oversight Program - CY 2005



Nuclear Regulatory Commission - Region IV

Arlington, Texas

May 11, 2006

Purpose of Today's Meeting

- A public forum for discussion of Wolf Creek's performance
- NRC will address the Wolf Creek performance issues identified in the annual assessment letter.
- Wolf Creek will be given the opportunity to respond to the information in the letter and inform the NRC of new or existing programs to maintain or improve their performance.

Agenda

- Introduction
- Review of Reactor Oversight Process
- National Summary of Plant Performance
- Discussion of Plant Performance Results
- Licensee Response and Remarks
- NRC Closing Remarks
- NRC available to address public questions

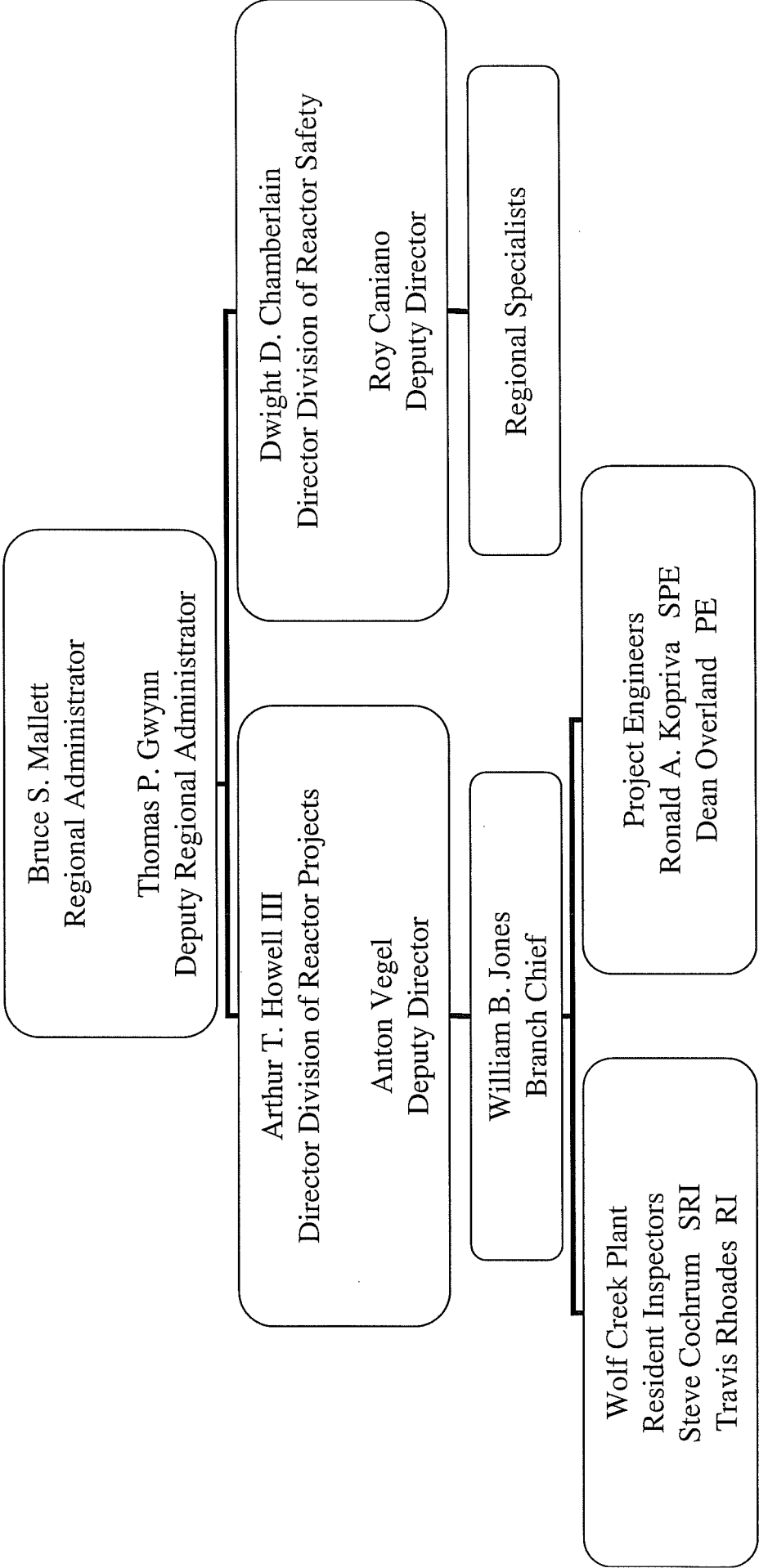
NRC Representatives

- **William B. Jones, Branch Chief**
- (817) 860-8141
- **Steve Cochrum, Senior Resident Inspector**
- (620) 364-8653
- **Travis Rhoades, Resident Inspector**
- (620) 364-8653

Wolf Creek Plant Performance

Steve Cochrum
Senior Resident Inspector

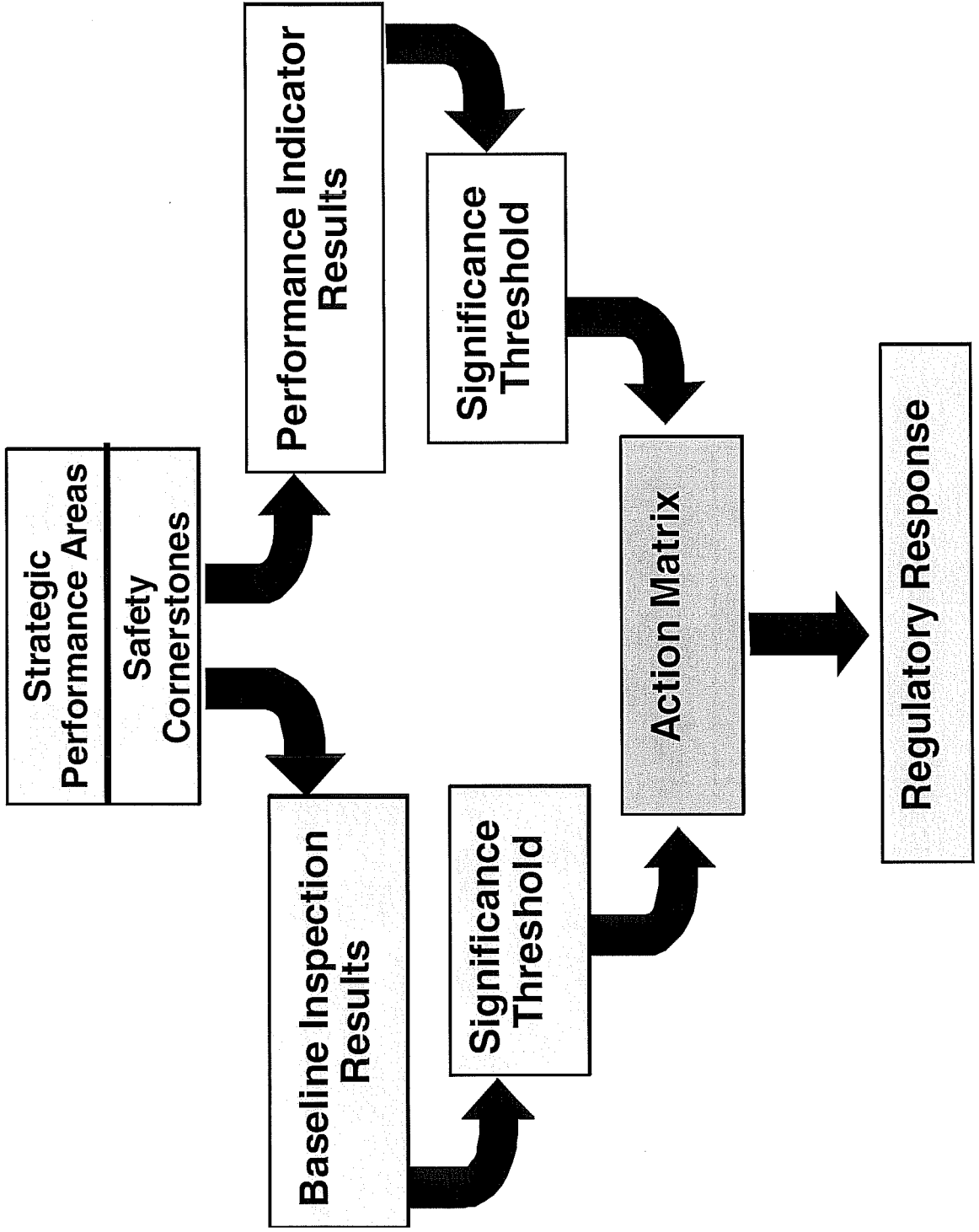
Region IV Organization



NRC Performance Goals

- Safety: Ensure protection of the public health and safety and the environment
- Security: Ensure the secure use and management of radioactive materials
- Openness: Ensure openness in our regulatory process
- Effectiveness: Ensure that NRC actions are effective, efficient, realistic, and timely
- Management: Ensure excellence in agency management to carry out the NRC strategic objectives

Reactor Oversight Process



Examples of Baseline Inspections

- Equipment Alignment ~80 hrs/yr
- Triennial Fire Protection ~200 hrs/3 yrs
- Operator Response ~125 hrs/yr
- Emergency Preparedness ~80 hrs/yr
- Radiation Release Controls ~110 hrs/2 yrs
- Worker Radiation Protection ~90 hrs/yr
- Corrective Action Program ~250 hrs/2 yrs
- Corrective Action Case Reviews ~60 hrs/yr

Significance Threshold

Performance Indicators

- Green:** Only Baseline Inspection
- White:** May increase NRC oversight
- Yellow:** Requires more NRC oversight
- Red:** Requires more NRC oversight

Inspection Findings

- Green:** Very Low safety issue
- White:** Low to moderate safety issue
- Yellow:** Substantial safety issue
- Red:** High safety issue

Action Matrix Concept

Licensee Response	Regulatory Response	Degraded Cornerstone	Multiple/Rep. Degraded Cornerstone	Unacceptable Performance
-------------------	---------------------	----------------------	------------------------------------	--------------------------



Increasing Safety Significance

Increasing NRC Inspection Efforts

Increasing NRC/Licensee Management Involvement

Increasing Regulatory Actions

National Summary of Plant Performance

Status at End of CY 2005

Licensee Response	84
Regulatory Response	12
Degraded Cornerstone	4
Multiple/Repetitive Degraded Cornerstone	3
Unacceptable	0
	<hr/>
Total	103

National Summary

• Performance Indicator Results (4th CY 2005)

- Green 1850
- White 4
- Yellow 0
- Red 0

• Total Inspection Findings (CY 2005)

- Green 849
- White 10
- Yellow 1
- Red 0

Wolf Creek Inspection Activities

(Jan 1 - Dec 31, 2005)

- **Regional Inspection Hours (includes hours charged to the licensee for direct inspection, office preparation, and documentation)**
- **Division of Reactor Projects 3207 hours**
- **Division of Reactor Safety 2302 hours**

Wolf Creek Inspection Activities

(Jan 1 - Dec 31, 2005)

- **Baseline Inspection Program**
- **Team Inspections**
 - **Fire Protection triennial inspection**
 - **Safety System Design and Performance Capability inspection**
- **Refueling Outage**

Wolf Creek Inspection Activities

(Jan 1 - Dec 31, 2005)

- **Temporary Instruction 2515/160, ‘Pressurizer Penetration Nozzles and Steam Space Piping Connections in U.S. Pressurized Water Reactors ‘(NRC Bulletin 2004-01)**
- **Temporary Instruction (TI) 2515/163, ‘Operational Readiness of Offsite Power Systems’**

Safety Significant Findings or PIs

- Six Inspection Findings of Very Low Safety Significance (Green)
- All Performance Indicators Were Green

Wolf Creek Assessment Results

(Jan 1 - Dec 31, 2005)

- Wolf Creek was operated in a manner that preserved public health and safety and met all cornerstone objectives.
- Wolf Creek operated within the Licensee Response Cornerstone Column of the NRC's Action Matrix.

2006 Planned Inspection Activities

- **Baseline Inspection Program**
- **Temporary Instruction 2515/150,
“Reactor Pressure Vessel Head
Penetration Nozzles”**

Wolf Creek Plant Response

Rick A. Muench
President and Chief Executive Officer
Wolf Creek Nuclear Operating Corporation

Contacting the NRC

- Report an emergency
 - ▶ (301) 816-5100 (call collect)
- Report a safety concern:
 - ▶ (800) 695-7403
 - ▶ Allegation@nrc.gov
- General information or questions
 - ▶ www.nrc.gov
 - ▶ Select “What We Do” for Public Affairs
 - ▶ Victor Dricks, Public Affairs Officer (800) 952-9677

Reference Sources

- Reactor Oversight Process
 - ▶ <http://www.nrc.gov/NRR/OVERSIGHT/ASSESS/index.html>
- Public Electronic Reading Room
 - ▶ <http://www.nrc.gov/reading-rm.html>
- Public Document Room
 - ▶ 1-800-397-4209 (Toll Free)