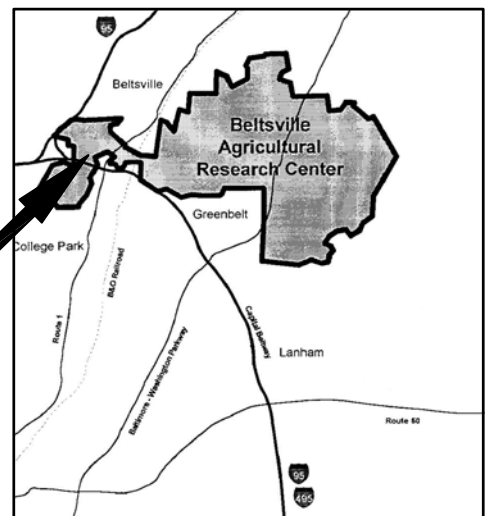
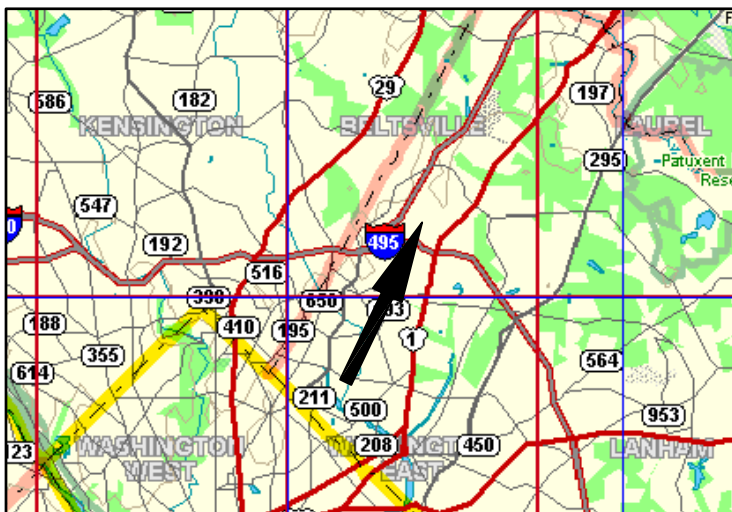


## FIGURES



Cabrera Services, Inc.

CHARACTERIZATION SURVEY  
 BARC Low-Level Radioisotope Burial Site  
 for  
 U.S. Army Operations Support Command  
 Beltsville, Maryland

Figure 1  
 Area Location Map

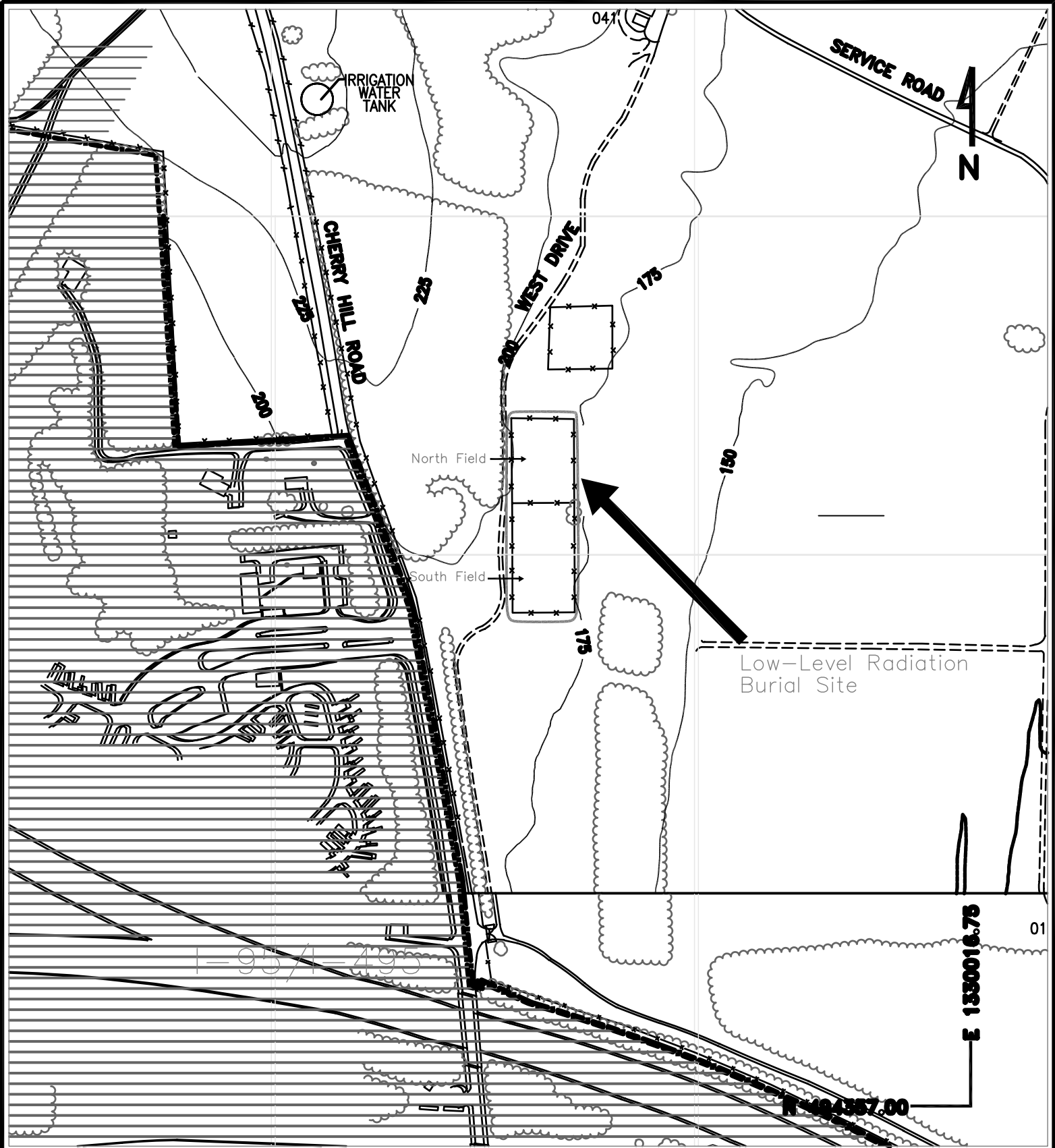


FIGURE: 2

Site Layout



Cabrera Services, Inc.

LEGEND

- Road
- BARC Boundary
- Unpaved Road
- AOC Boundary
- Fence
- BARC Bldg & No.
- Gate
- Treeline
- Single Trees
- Sidewalk
- Streams

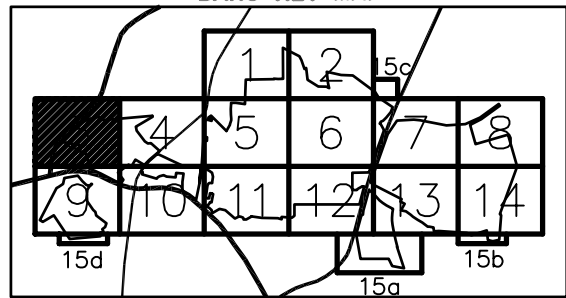
APPROX. SCALE:

1"=175'

DATE:

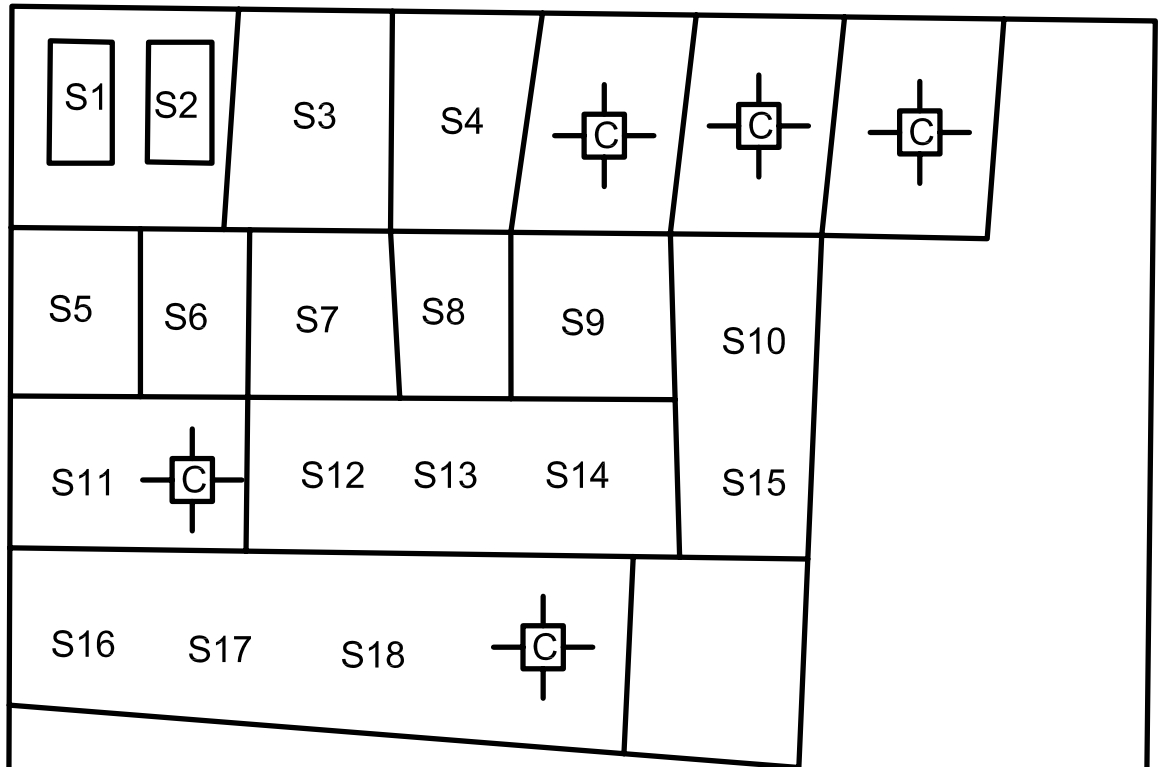
JAN 2003

BARC KEY MAP





- S1 = 4/6/51
- S2 = 8/4/53
- S3 = 5/13/59
- S4 = 4/3/61
- S5 = 8/67
- S6 = 9/68
- S7 = 5/70
- S8 = 11/70
- S9 = 4/71
- S10 = 11/71
- S11 = 7/72
- S12 = 8/72
- S13 = 11/72
- S14 = 12/72
- S15 = 3/73
- S16 = 2/73
- S17 = 3/15/73
- S18 = 9/7/73



GATE

This diagram shows the original fence and post placement prior to the beginning of site work.

Twenty-three burial pits were identified either through site markers or through depressions in the ground. If known, the dates are given below the location of the site marker. The approximate center of the depression is indicated if no marker was found.

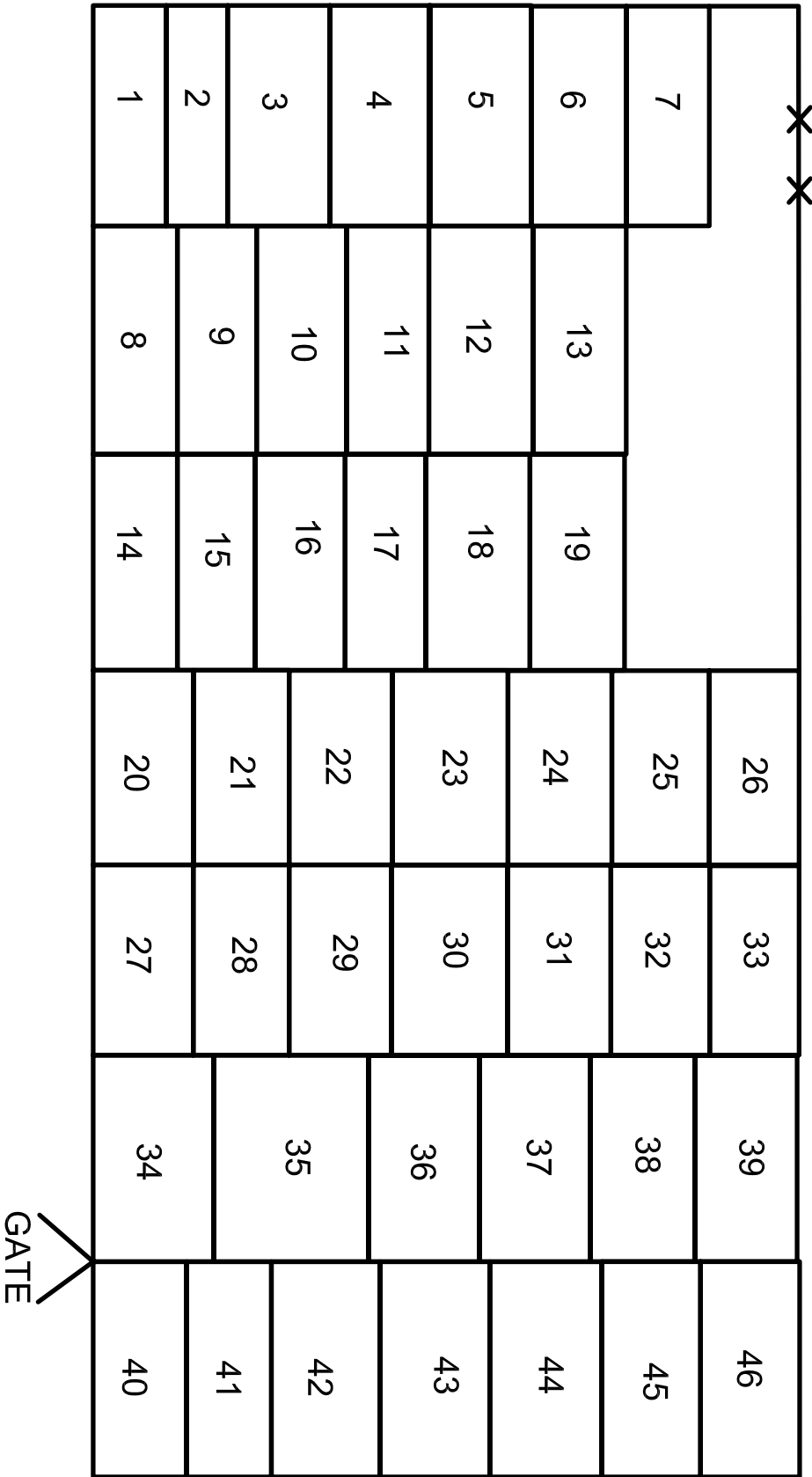
Source: Letter dated 8/11/1989 from J.F. Patterson of RSO, Inc. to B. Flook, Agricultural Research Service



Cabrera Services, Inc.

CHARACTERIZATION SURVEY  
BARC Low-Level Radioisotope Burial Site  
for  
U.S. Army Operations Support Command  
Beltsville, Maryland

Figure 3. Map of Early  
LLRBS Trenches prior to  
1989 Site Clearing Operations -  
North Field



Note: Not to scale. Entech provided to Cabrera via fax on 1/10/03

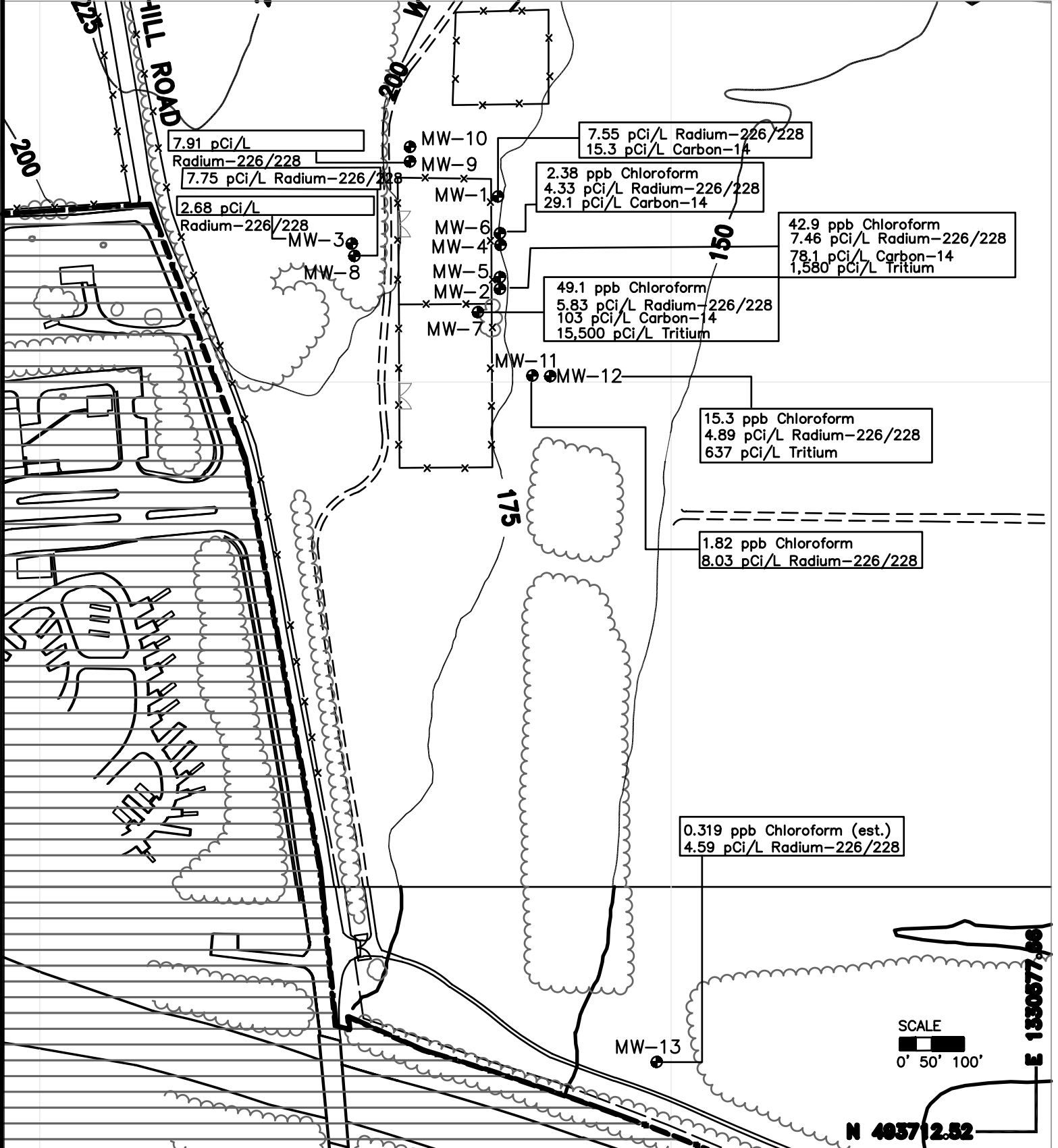


Cabrera Services, Inc.

CHARACTERIZATION SURVEY  
BARC Low-Level Radioisotope Burial Site  
for  
U.S. Army Operations Support Command  
Beltsville, Maryland

Figure 4  
Schematic of Known  
Disposal Trenches - North Field





**USDA** Agricultural Research Service  
 BARC 18 RI/FS  
 Facility: Beltsville, Maryland

**FIGURE: 5**  
 Existing Monitoring Wells  
 Contaminants of Concern  
 In Groundwater

Revised: 01/03 By: RA File: ExistingMWs.dwg

Cabrera Services, Inc.

**LEGEND**

- Streams
- Building and No. (003)
- Treeline
- BARC Boundary
- Road
- Unpaved Road
- Fence
- Sidewalk
- Gate
- Monitoring Well

pCi/L = picocuries per liter  
 ppb = parts per billion

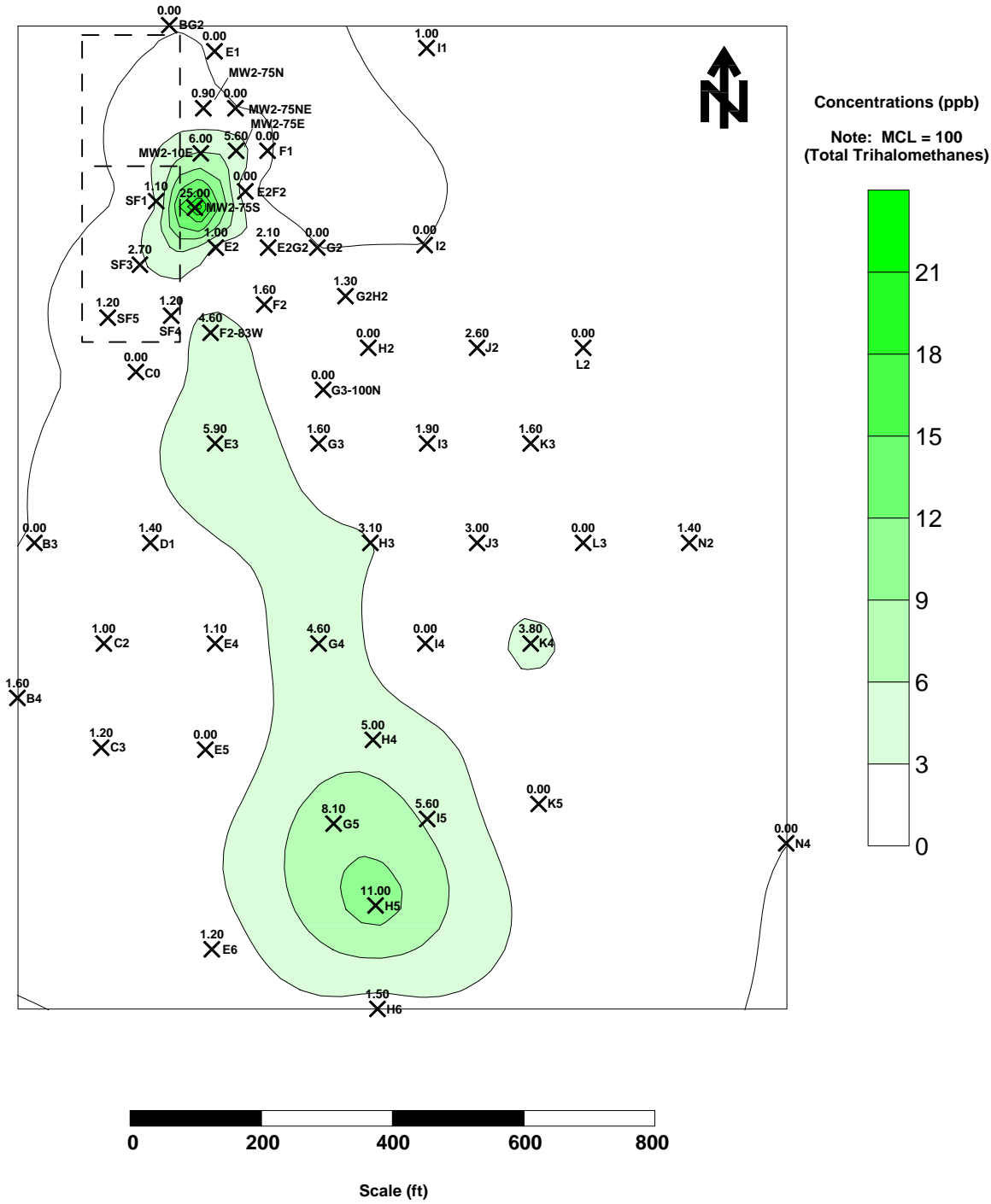
**BARC KEY MAP**

E 1330577.06

N 403712.52

SCALE  
 0' 50' 100'

**ENTECH Geoprobe Samples  
June/July 1997  
Engineering Evaluation/Cost Analysis**

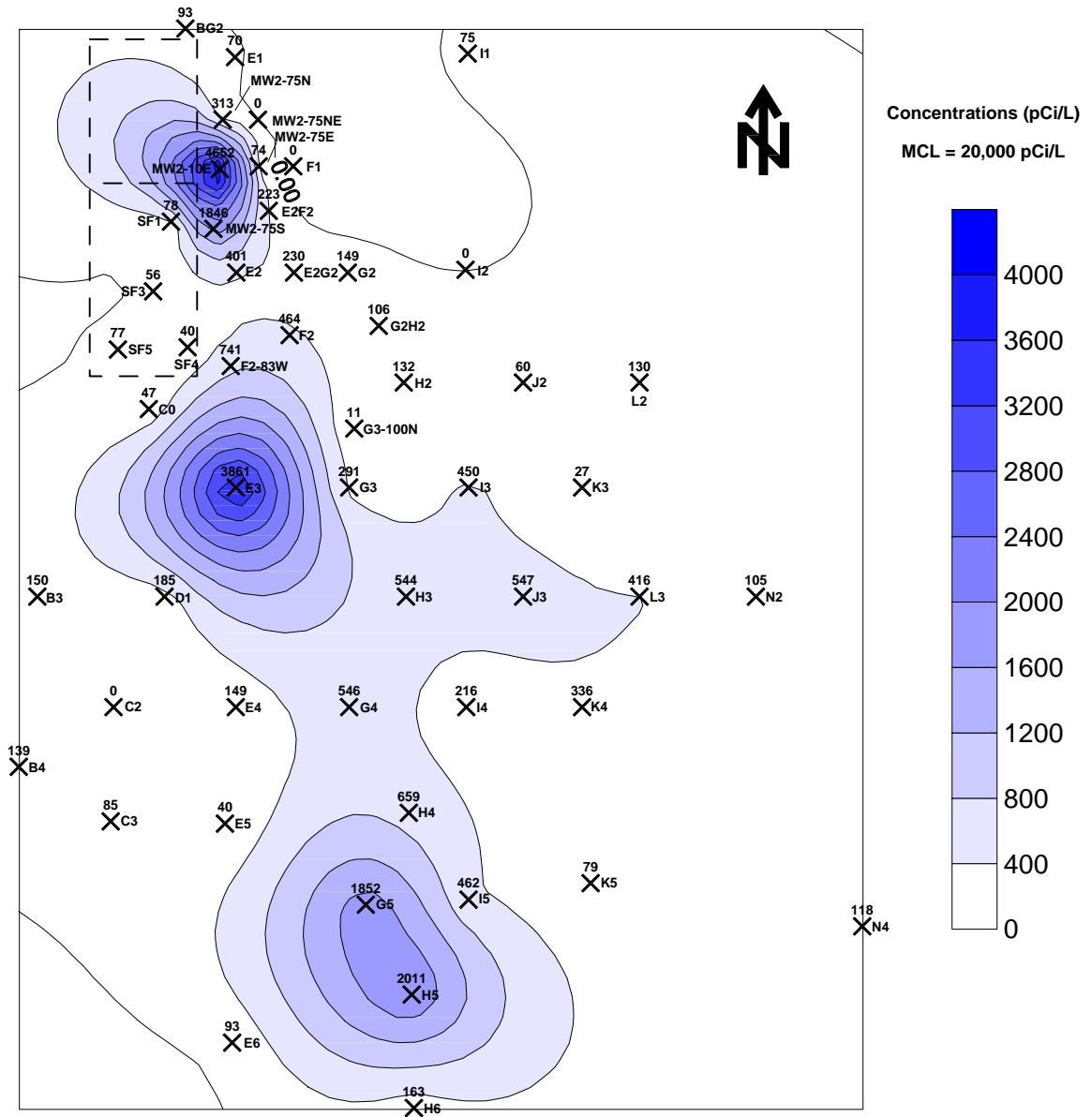


Cabrera Services, Inc.

CHARACTERIZATION SURVEY  
BARC Low-Level Radioisotope Burial Site  
for  
U.S. Army Operations Support Command  
Beltsville, Maryland

Figure 6  
Chloroform Groundwater Plume

**ENTECH Geoprobe Samples  
June/July 1997  
Engineering Evaluation/Cost Analysis**



Cabrera Services, Inc.

CHARACTERIZATION SURVEY  
BARC Low-Level Radioisotope Burial Site  
for  
U.S. Army Operations Support Command  
Beltsville, Maryland

Figure 7  
Tritium Groundwater Plume



