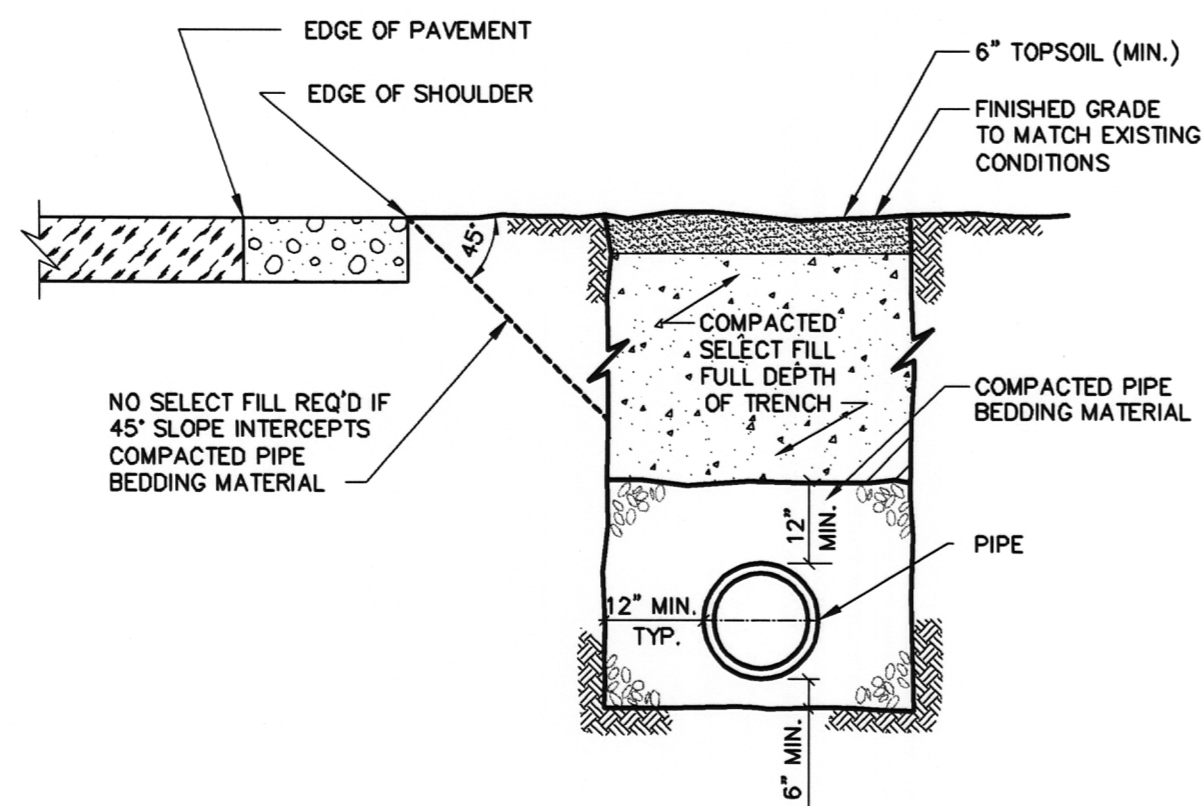
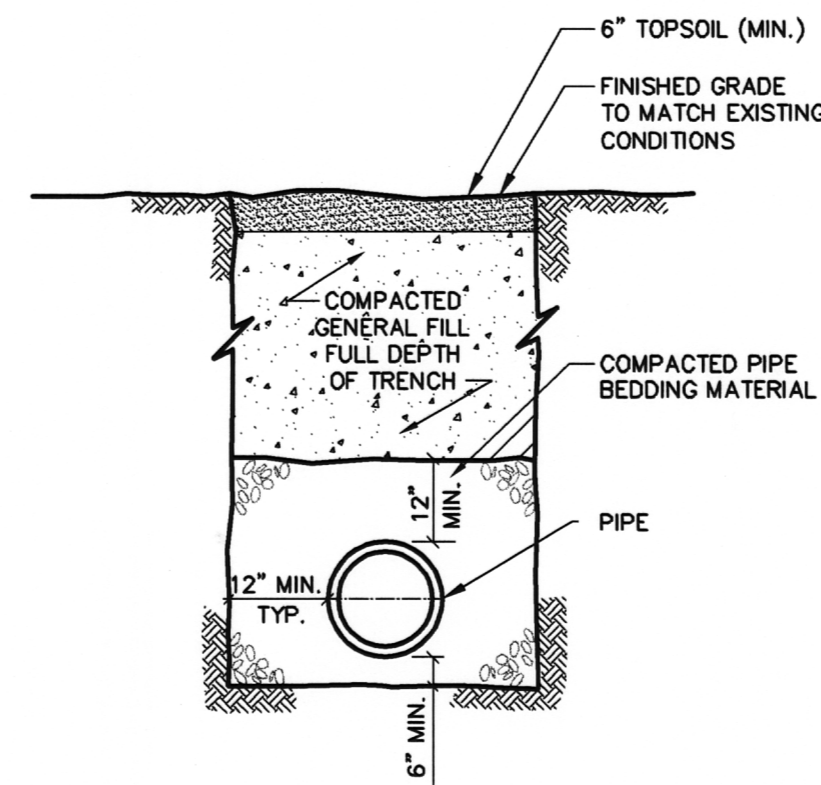


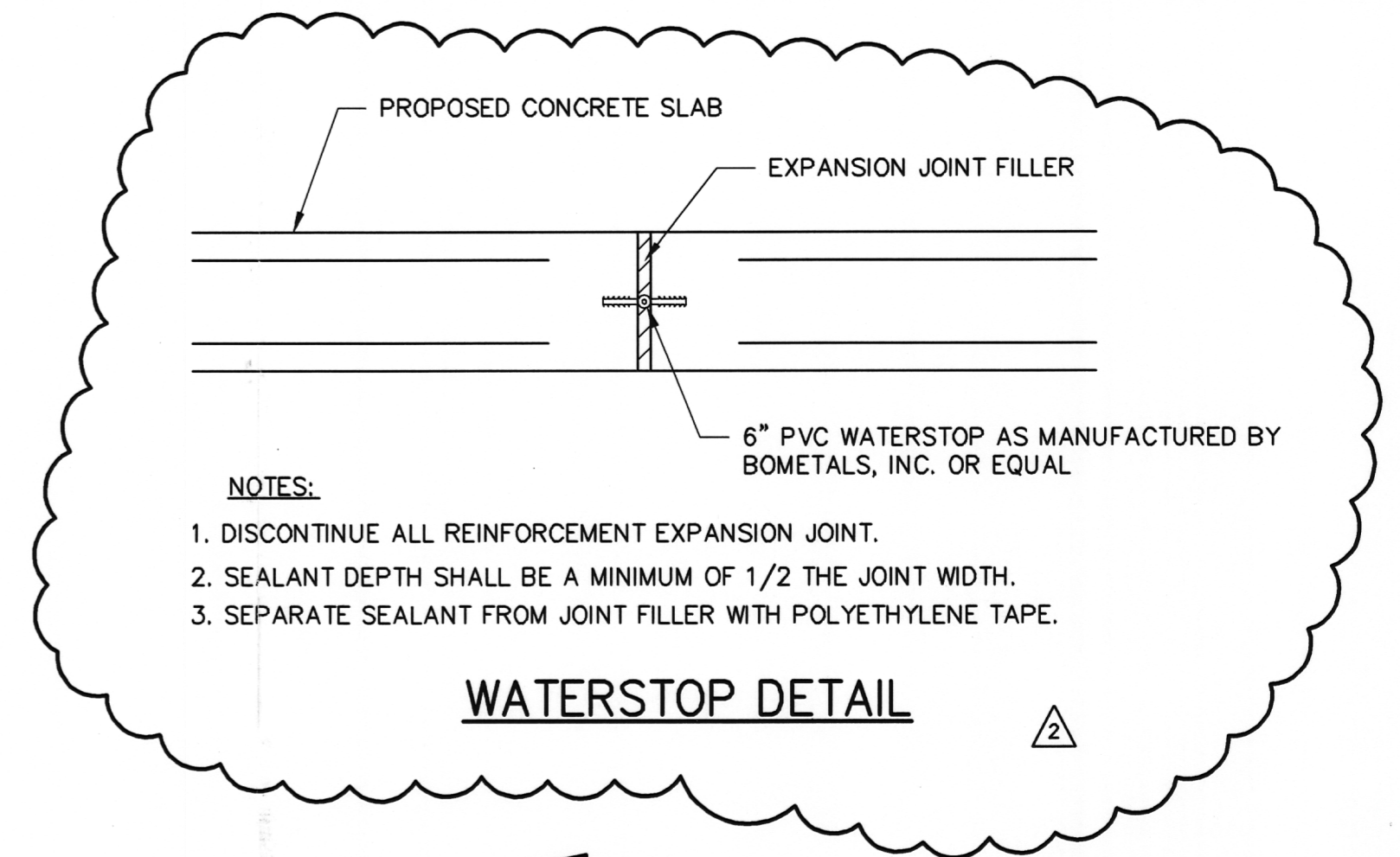
**TRENCH DETAIL
BENEATH PAVED SURFACES**
NOT TO SCALE



**TRENCH DETAIL
PARALLEL TO ROADWAYS**
NOT TO SCALE

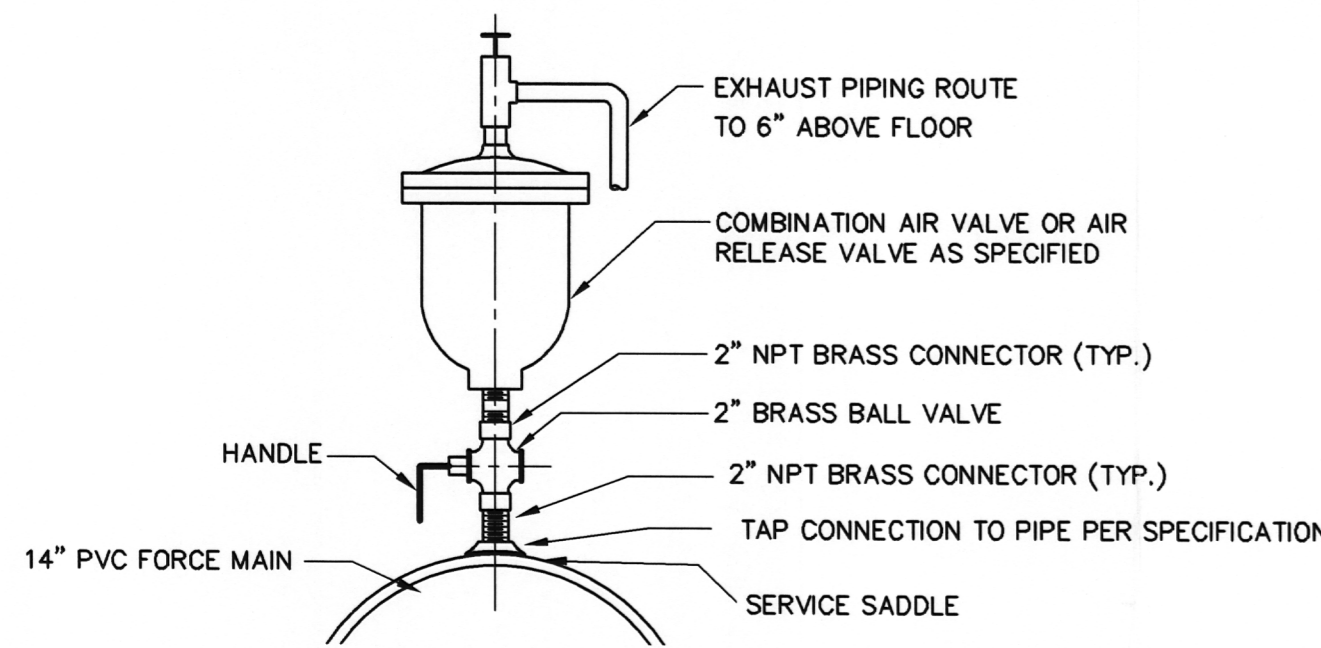


**TRENCH DETAIL
UNIMPROVED AREAS**
NOT TO SCALE

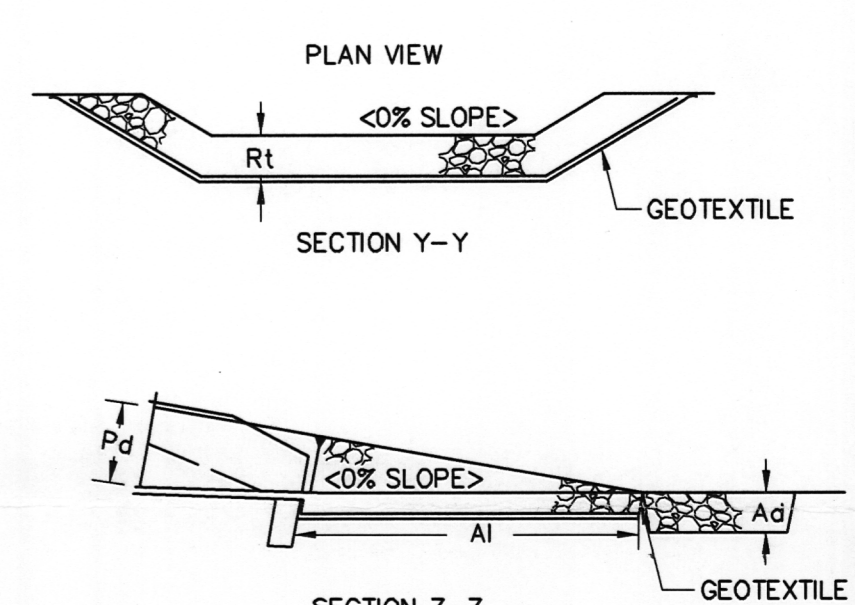
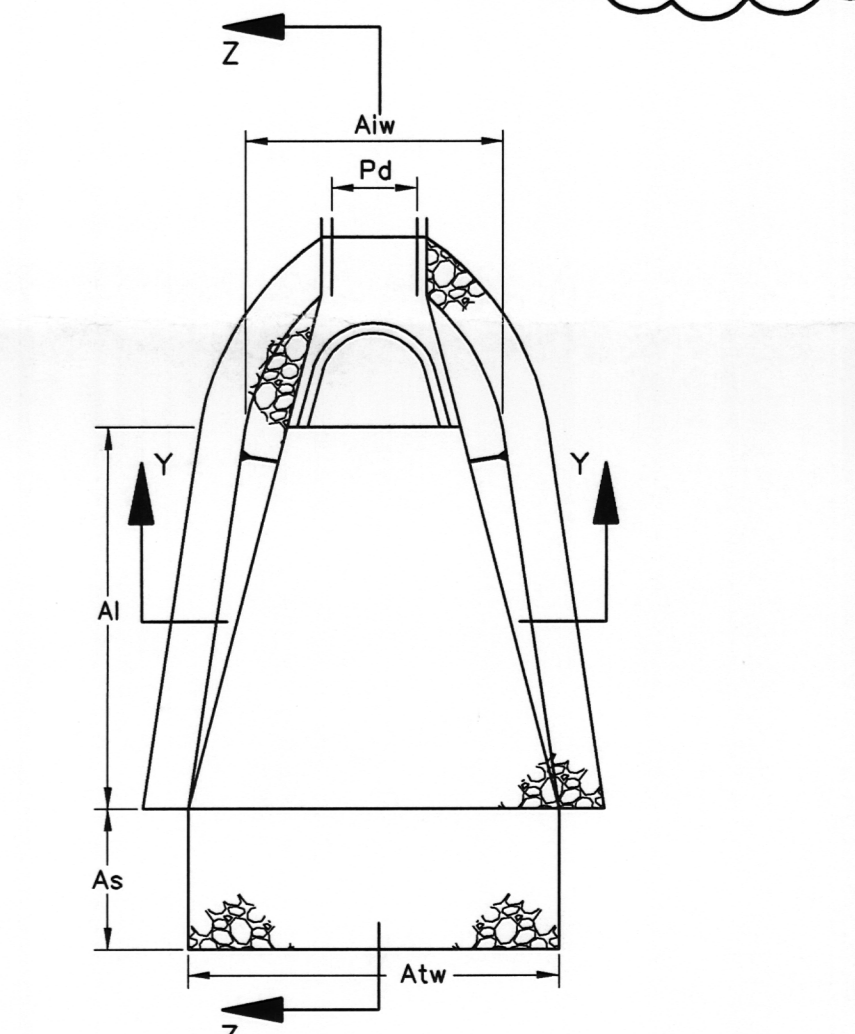


- NOTES:**
1. DISCONTINUE ALL REINFORCEMENT EXPANSION JOINT.
 2. SEALANT DEPTH SHALL BE A MINIMUM OF 1/2 THE JOINT WIDTH.
 3. SEPARATE SEALANT FROM JOINT FILLER WITH POLYETHYLENE TAPE.

WATERSTOP DETAIL

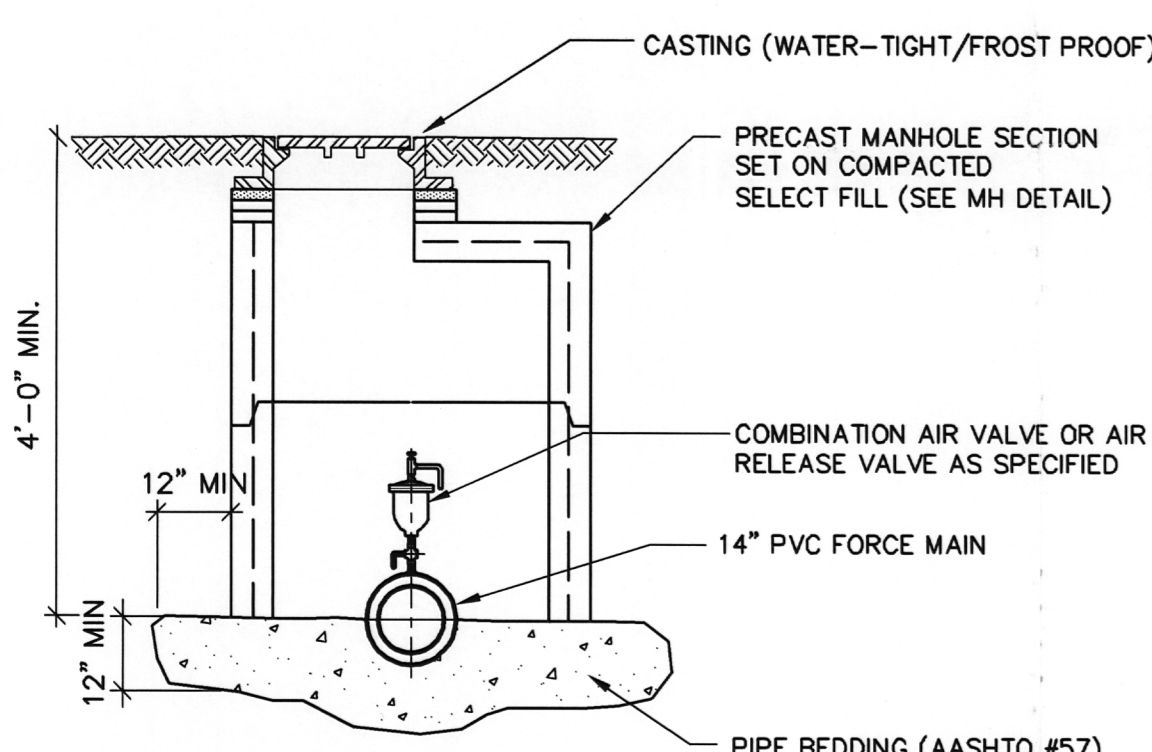


AIR VALVE DETAIL
NOT TO SCALE

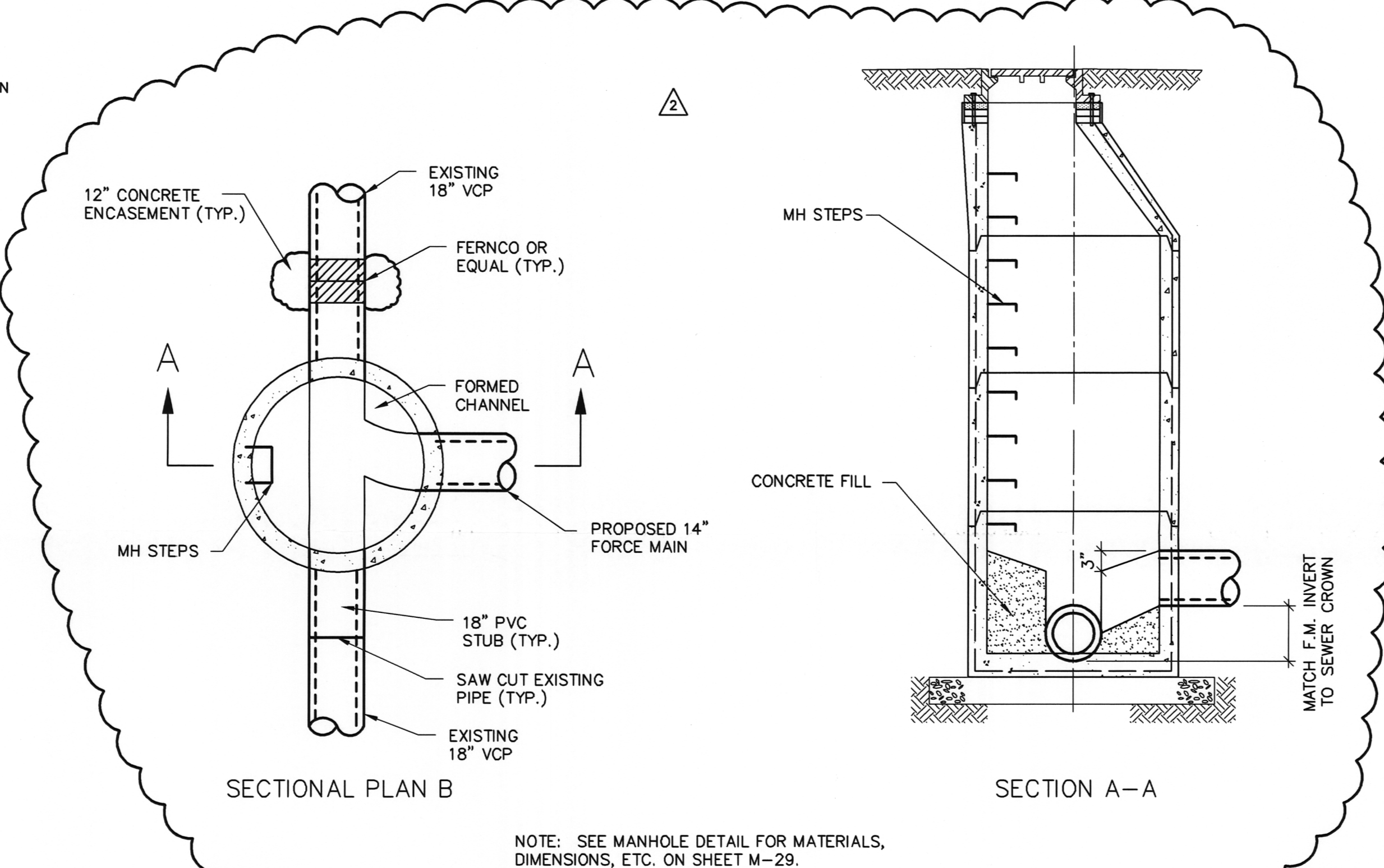


OUTLET NO.	PIPE DIA. (IN)	RIPRAP			Apron		SPLASH PAD		
		SIZE (R-)	THICK. Rt (IN)	LENGTH Al (FT)	INITIAL WIDTH Aiw (FT)	TERMINAL WIDTH Atw (FT)	LENGTH As (FT)	SIZE (R-)	MIN. DEPTH Ad (IN)
1	15	5	18	10	5	15	5	6	24
2	18	5	18	10	5	15	5	6	24
4	48	6	24	20	12	20	5	6	24

TYPICAL PIPE OUTLET DETAIL
NOT TO SCALE



AIR RELEASE INSTALLATION DETAIL
NOT TO SCALE



NOTE: SEE MANHOLE DETAIL FOR MATERIALS, DIMENSIONS, ETC. ON SHEET M-29.

FORCE MAIN MANHOLE H3A
NOT TO SCALE

XREFS: I:\ACAD\PROJ\4812014\100-XREF\4812B0R.dwg IMAGES: None
User: SThompson Spec: PIRNIE STANDARD File: I:\ACAD\PROJ\4812014\100-DESIGN\M-30.DWG Scale: 1:1 Date: 05/24/2005 Time: 14:45 Layout: Layout1



REVISIONS				
NO.	BY	DATE	REMARKS	
1	TCS	6/20/05	REVISED PER ADDENDUM NO.4	
2	TCS	11/15/05	REVISED PER POST BID CHANGE	

DES: BEG
DWN: MAW
CKD: KRM

MOLYCORP, INC
WASHINGTON, PA
SITE REMEDIATION CONSTRUCTION

**MISCELLANEOUS
DETAILS**
NOT TO SCALE

COPYRIGHT © 2005
MALCOLM PIRNIE, INC.
DATE: JUNE 2005
M SHEET 30 OF 46
CAD REF. NO. M-30

D-26