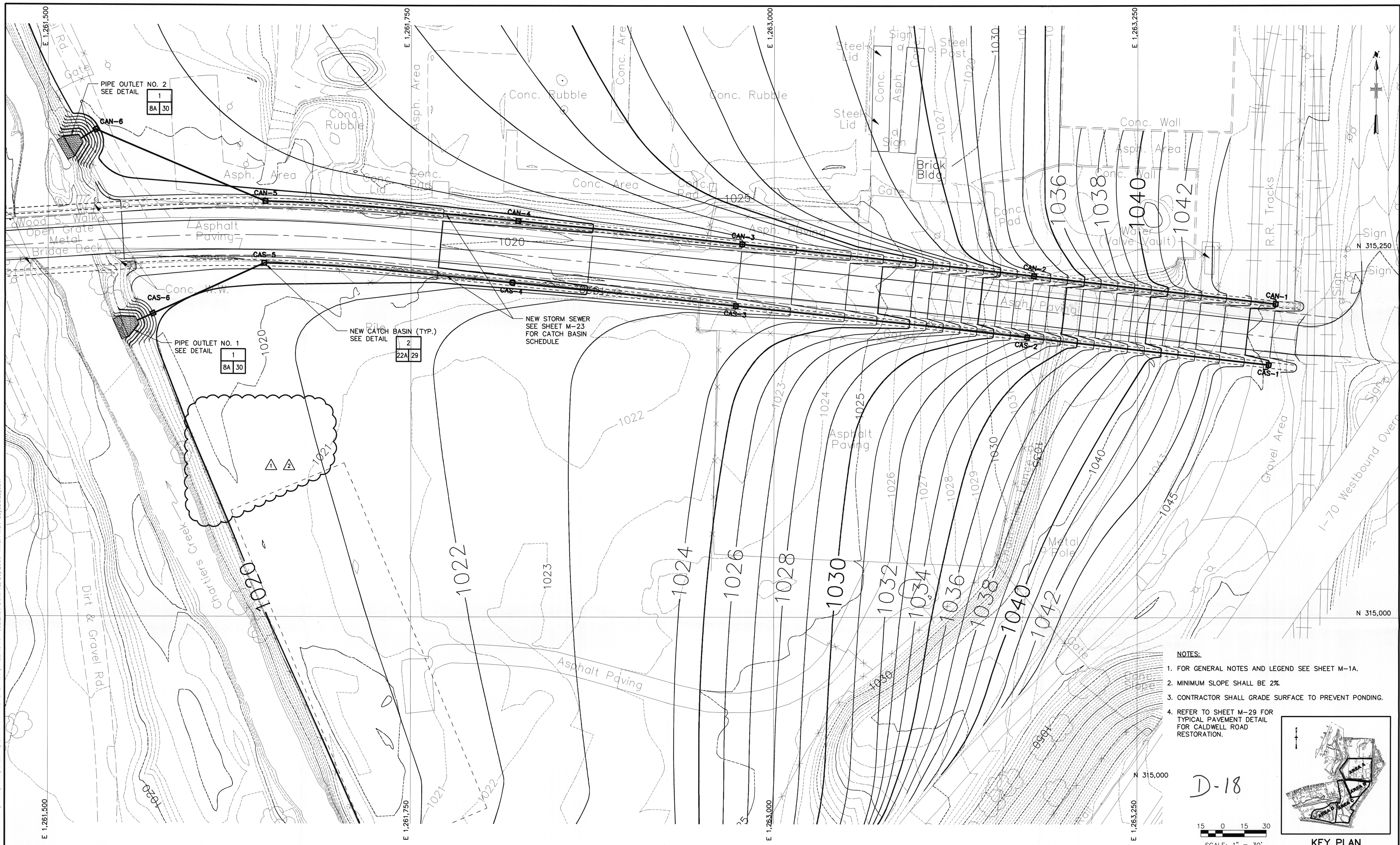
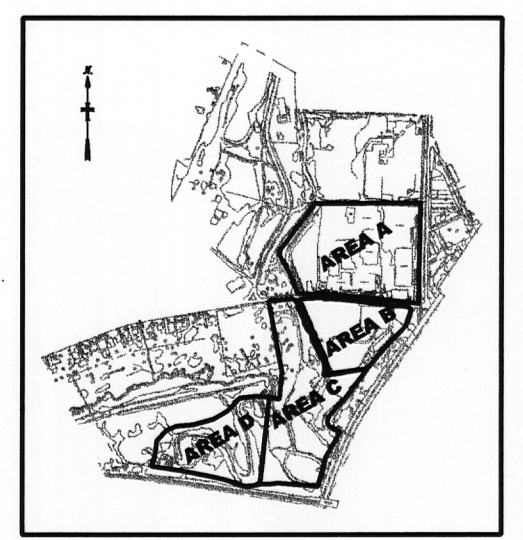
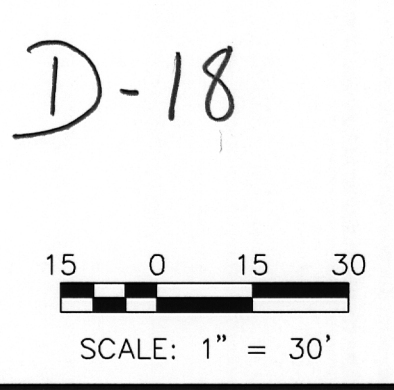


User: SHAFFER Spec: PIRNIE STANDARD File: I:\ACAD\PROJ\4812014\PERMIT CHANGE-2-27-06\M-22A.DWG Scale: 1:1 Date: 02/28/2006 Time: 14:54 Layout: Layout1



- NOTES:**
1. FOR GENERAL NOTES AND LEGEND SEE SHEET M-1A.
  2. MINIMUM SLOPE SHALL BE 2%.
  3. CONTRACTOR SHALL GRADE SURFACE TO PREVENT PONDING.
  4. REFER TO SHEET M-29 FOR TYPICAL PAVEMENT DETAIL FOR CALDWELL ROAD RESTORATION.



**MALCOLM PIRNIE**

REVISIONS				
NO.	BY	DATE	REVISIONS	REMARKS
1	TCS	6/20/05	REVISED PER ADDENDUM NO.4	
2	TCS	02/27/06	REVISED PER PERMIT CHANGE	

DES DD  
DWN MAW  
CKD BEG

MOLYCORP, INC  
WASHINGTON, PA  
**SITE REMEDIATION CONSTRUCTION**

**ENLARGED FINAL GRADING PLAN  
ALONG CALDWELL AVE.**  
SCALE: 1"=30'

COPYRIGHT © 2005  
MALCOLM PIRNIE, INC.  
DATE JUNE 2005  
M SHEET 22A OF 46  
CAD REF. NO. M-22A