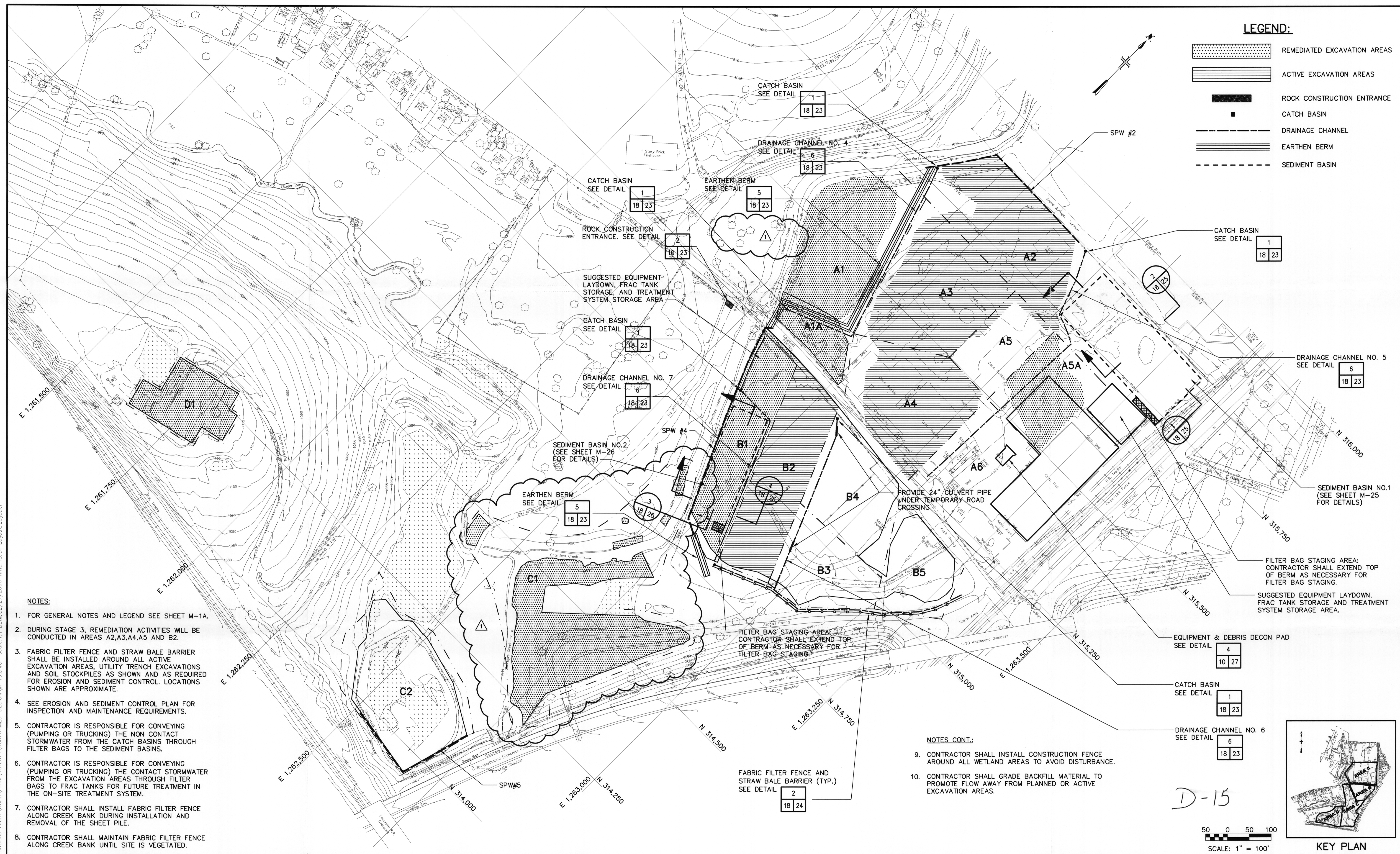


User: SHAFER Spec: PIRNIE STANDARD File: I:\ACAD\PROJ\4812014\CONFORMED-DESIGN\M-19.DWG Scale: 1:1 Date: 02/27/2006 Time: 13:51 Layout: Layout1



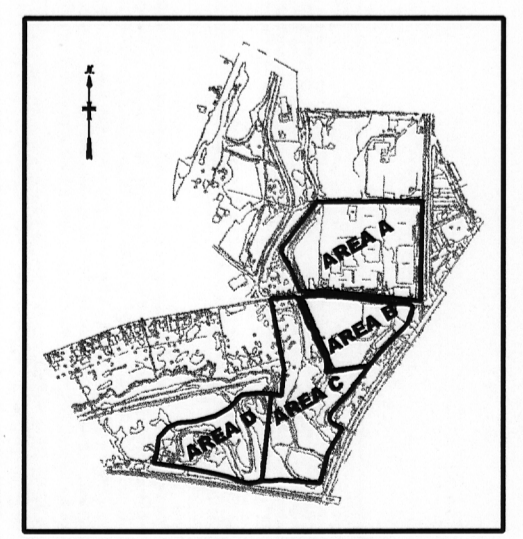
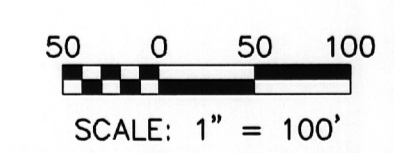
LEGEND:

- REMEDIATED EXCAVATION AREAS
- ACTIVE EXCAVATION AREAS
- ROCK CONSTRUCTION ENTRANCE
- CATCH BASIN
- DRAINAGE CHANNEL
- EARTHEN BERM
- SEDIMENT BASIN

- NOTES:**
1. FOR GENERAL NOTES AND LEGEND SEE SHEET M-1A.
 2. DURING STAGE 3, REMEDIATION ACTIVITIES WILL BE CONDUCTED IN AREAS A2,A3,A4,A5 AND B2.
 3. FABRIC FILTER FENCE AND STRAW BALE BARRIER SHALL BE INSTALLED AROUND ALL ACTIVE EXCAVATION AREAS, UTILITY TRENCH EXCAVATIONS AND SOIL STOCKPILES AS SHOWN AND AS REQUIRED FOR EROSION AND SEDIMENT CONTROL. LOCATIONS SHOWN ARE APPROXIMATE.
 4. SEE EROSION AND SEDIMENT CONTROL PLAN FOR INSPECTION AND MAINTENANCE REQUIREMENTS.
 5. CONTRACTOR IS RESPONSIBLE FOR CONVEYING (PUMPING OR TRUCKING) THE NON CONTACT STORMWATER FROM THE CATCH BASINS THROUGH FILTER BAGS TO THE SEDIMENT BASINS.
 6. CONTRACTOR IS RESPONSIBLE FOR CONVEYING (PUMPING OR TRUCKING) THE CONTACT STORMWATER FROM THE EXCAVATION AREAS THROUGH FILTER BAGS TO FRAC TANKS FOR FUTURE TREATMENT IN THE ON-SITE TREATMENT SYSTEM.
 7. CONTRACTOR SHALL INSTALL FABRIC FILTER FENCE ALONG CREEK BANK DURING INSTALLATION AND REMOVAL OF THE SHEET PILE.
 8. CONTRACTOR SHALL MAINTAIN FABRIC FILTER FENCE ALONG CREEK BANK UNTIL SITE IS VEGETATED.

- NOTES CONT.:**
9. CONTRACTOR SHALL INSTALL CONSTRUCTION FENCE AROUND ALL WETLAND AREAS TO AVOID DISTURBANCE.
 10. CONTRACTOR SHALL GRADE BACKFILL MATERIAL TO PROMOTE FLOW AWAY FROM PLANNED OR ACTIVE EXCAVATION AREAS.

D-15



REVISIONS				
NO.	BY	DATE	REVISIONS	REMARKS
1	TCS	11/15/05	REVISED PER POST BID CHANGE	

DES _____
DWN _____
CKD _____

**MOLYCORP, INC
WASHINGTON, PA
SITE REMEDIATION CONSTRUCTION**

**STAGE 3
BEST MANAGEMENT PRACTICE PLAN**

COPYRIGHT © 2005
MALCOLM PIRNIE, INC.
DATE JUNE 2005
M SHEET 19 OF 46
CAD REF. NO. M-19