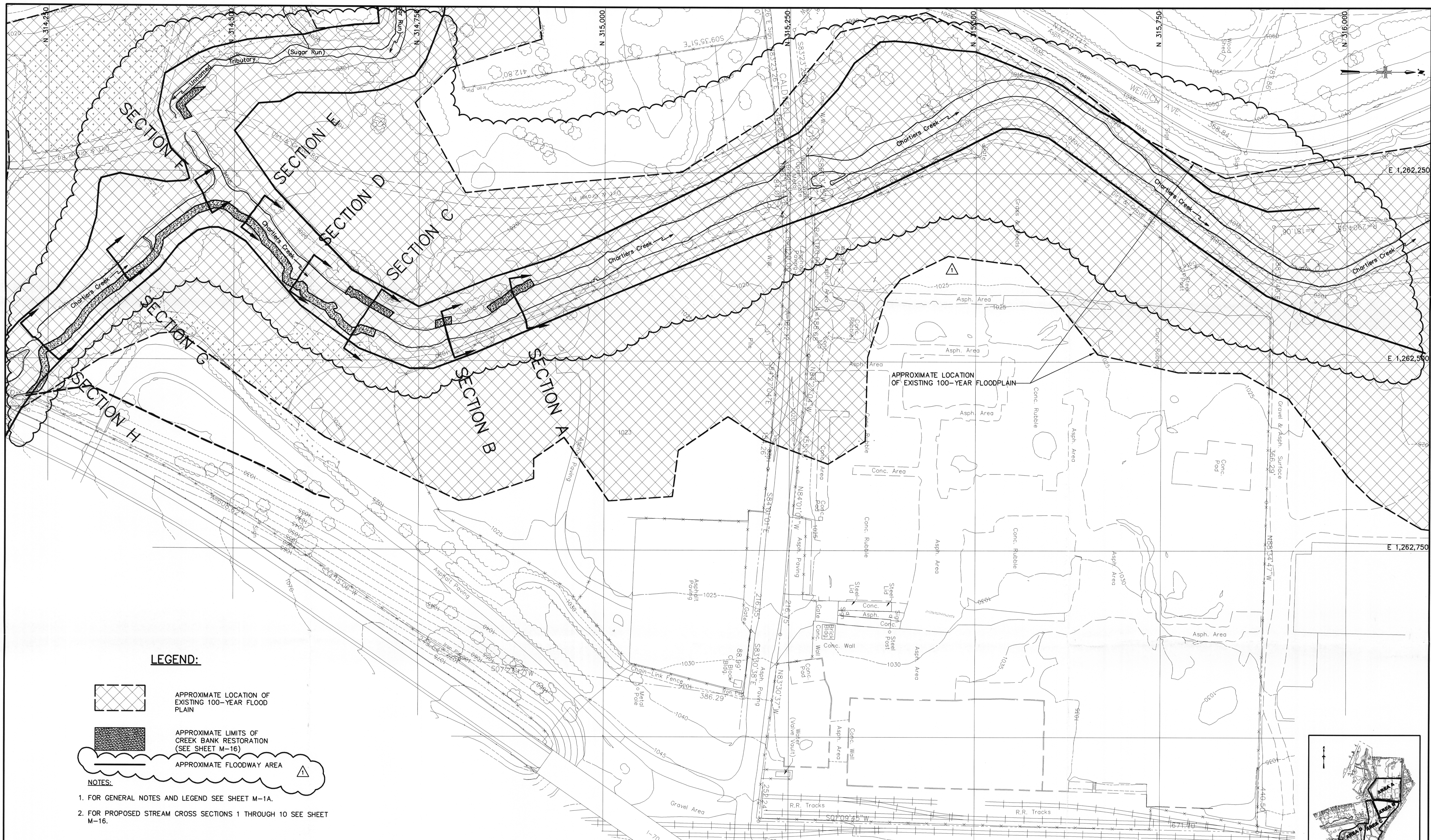
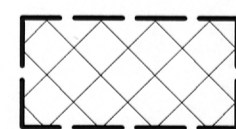


User: WELSHANS Spec: PIRNIE STANDARD File: I:\ACAD\PROJ\4812014\CONFORMED-DESIGN\M-15.DWG Scale: 1:1 Date: 12/08/2005 Time: 10:21 Layout: Layout1



LEGEND:



APPROXIMATE LOCATION OF EXISTING 100-YEAR FLOODPLAIN

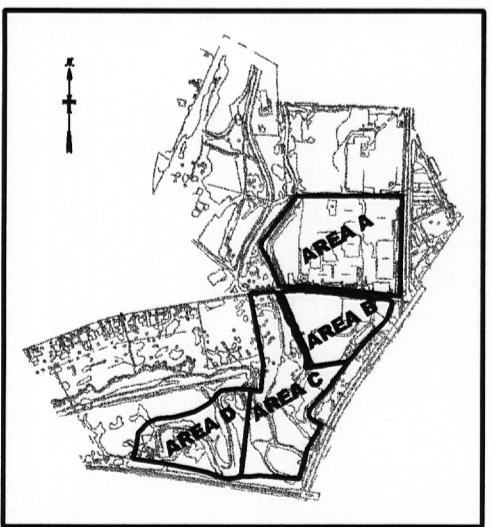


APPROXIMATE LIMITS OF CREEK BANK RESTORATION (SEE SHEET M-16)

APPROXIMATE FLOODWAY AREA

NOTES:

- FOR GENERAL NOTES AND LEGEND SEE SHEET M-1A.
- FOR PROPOSED STREAM CROSS SECTIONS 1 THROUGH 10 SEE SHEET M-16.



KEY PLAN

SCALE: 1" = 60'

D-11

**MALCOLM
PIRNIE**

REVISIONS			
NO.	BY	DATE	REMARKS
1	TCS	11/15/05	REVISED PER POST BID CHANGE

DES TCS
DWN MAW
CKD BEG

**MOLYCORP, INC
WASHINGTON, PA
SITE REMEDIATION CONSTRUCTION**

**PROPOSED CREEK BANK
RESTORATION PLAN**

COPYRIGHT © 2005
MALCOLM PIRNIE, INC.
DATE JUNE 2005
M SHEET 15 OF 46
CAD REF. NO. M-15