

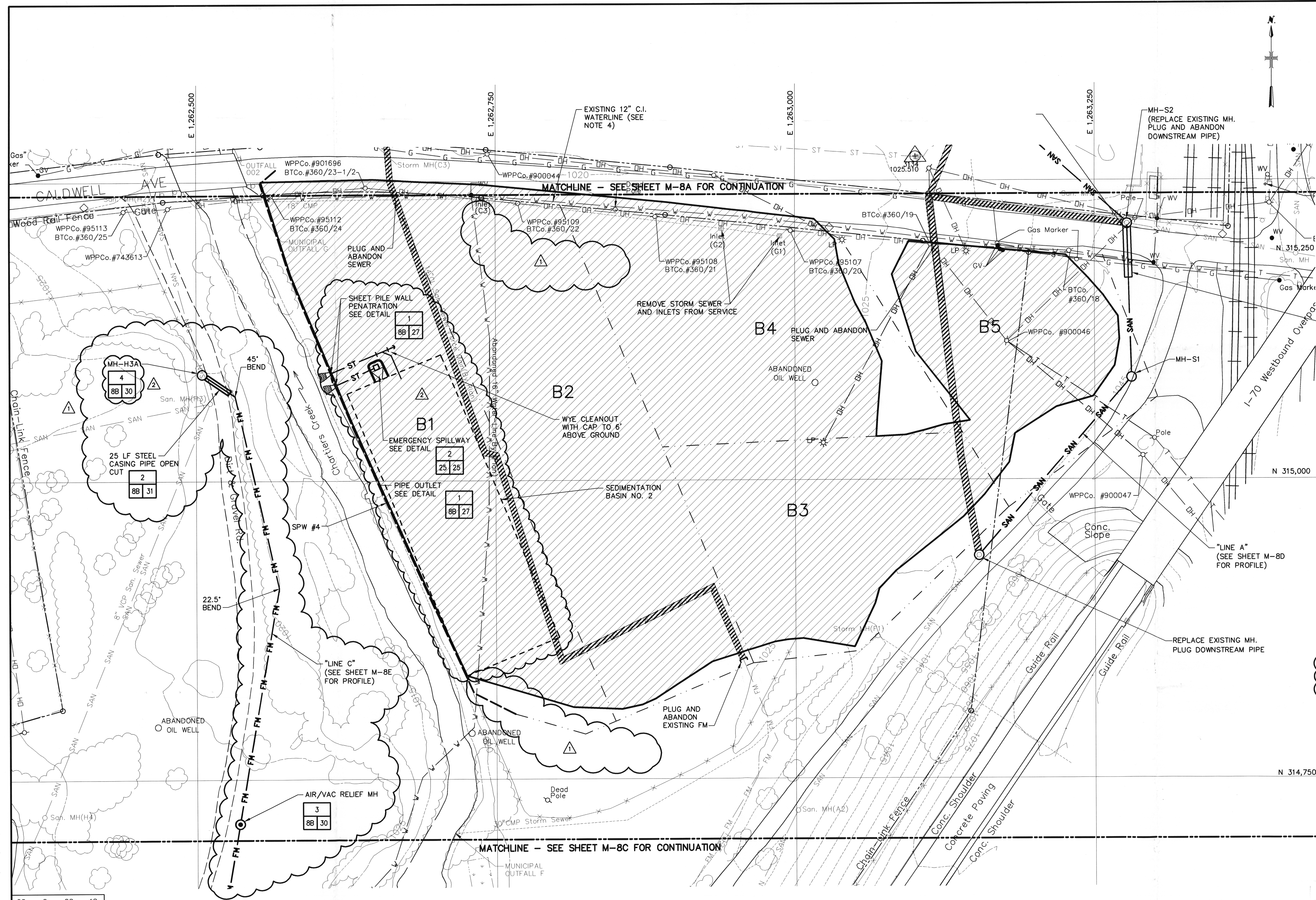
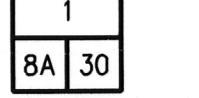
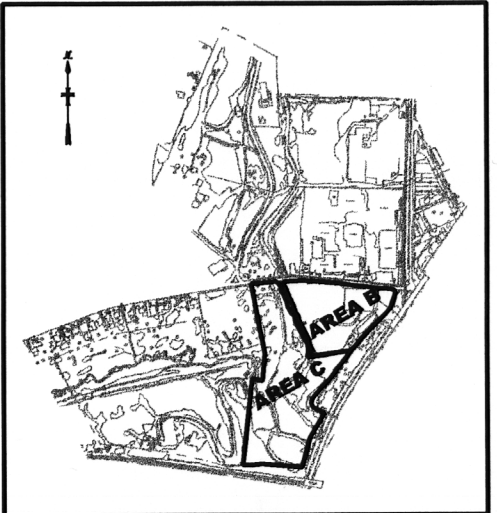


- LEGEND:**
-  APPROXIMATE LIMITS OF TOP OF EXCAVATION
 -  INDICATES UTILITY SERVICE TO BE PERMANENTLY RELOCATED PRIOR TO DEMOLITION AND REMOVAL

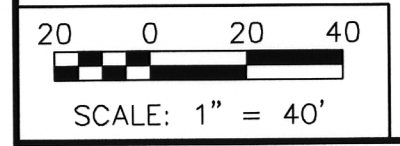


- NOTES:**
- FOR GENERAL NOTES AND LEGEND SEE SHEET M-1A.
 - ALL UTILITIES WITHIN THE LIMITS OF EXCAVATIONS NOT DESIGNATED TO BE RELOCATED SHALL BE REMOVED AND DISPOSED OF IN ACCORDANCE WITH THE TECHNICAL SPECIFICATIONS IF ENCOUNTERED DURING EXCAVATION.
 - PRIOR TO DEMOLITION AND EXCAVATION IN THIS AREA, CONTRACTOR SHALL, IN ADDITION TO PA ONE CALL, CONTACT COLUMBIA GAS OF PA, ROB MASSEO, 150 HILLSIDE DR, BETHEL PARK, PA, 15102, 412-409-4074 TO COORDINATE WORK. COLUMBIA GAS WILL PROVIDE NECESSARY REMOVAL AND/OR RELOCATION OF THE GAS VALVE NEST AND/OR ASSOCIATED PIPING AT THEIR DISCRETION.
 - PRIOR TO EXCAVATION AND SHEET PILING, CONTRACTOR SHALL COORDINATE WATER LINE PROTECTION/REMOVAL WITH PA AMERICAN WATER JEFF MAZE. (724)743-3108.
 - PRIOR TO EXCAVATION IN AREA B, CONTRACTOR SHALL, IN ADDITION TO PA ONE CALL, CONTACT ALLEGHENY POWER/CHARTERS DIVISION, ED FRENZIC AT 724-942-5238 OR 724-366-5412 AND VERIZON OR PA, DENNIS UCHAL, 724-223-886 TO COORDINATE AND DETERMINE NEED FOR TEMPORARY PROTECTION OR RELOCATION OF OVERHEAD POWER AND COMMUNICATION LINES.
 - UTILITY TRENCHES SHALL BE CONSTRUCTED IN ACCORDANCE WITH DETAIL 

D-06



KEY PLAN



NO.		BY	DATE	REVISIONS	REMARKS
1		TCS	11/15/05	REVISED PER POST BID CHANGE	
2		TCS	02/27/06	REVISED PER PERMIT CHANGE	

DES KZ
DWN TT
CKD GWD

MOLYCORP, INC
WASHINGTON, PA
SITE REMEDIATION CONSTRUCTION

UTILITIES RELOCATION PLAN
AREAS B & C
SCALE: 1"=40'

COPYRIGHT © 2005
MALCOLM PIRNIE, INC.
DATE: JUNE 2005
M SHEET 8B OF 46
CAD REF. NO. M-8B

User: WELSHANS Spec: PIRNIE STANDARD File: \ACAD\PROJ\4812014\PERMIT CHANGE-2-27-06\M-8B.DWG Scale: 1:1 Date: 03/21/2006 Time: 10:52 Layout: Layout1

