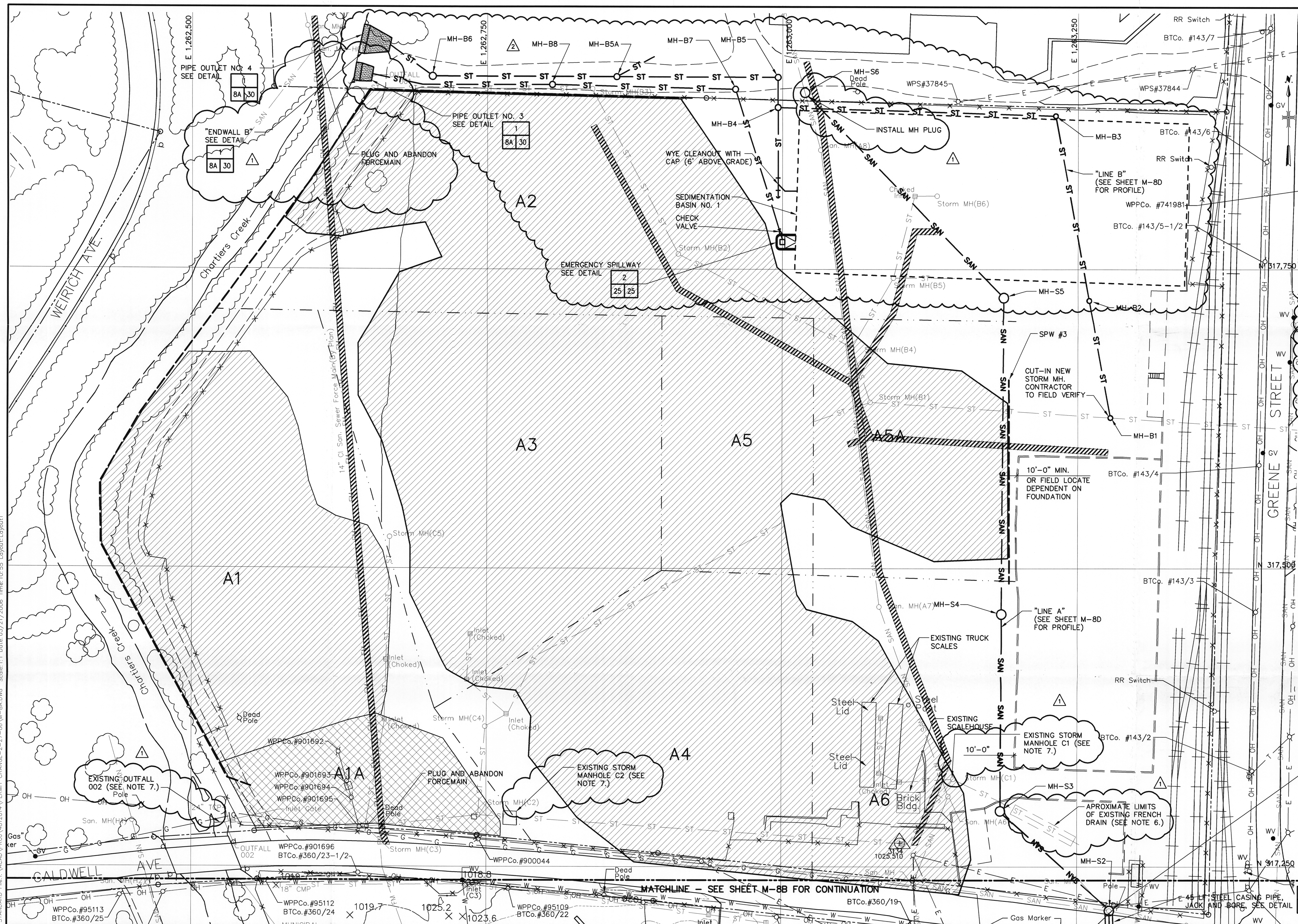


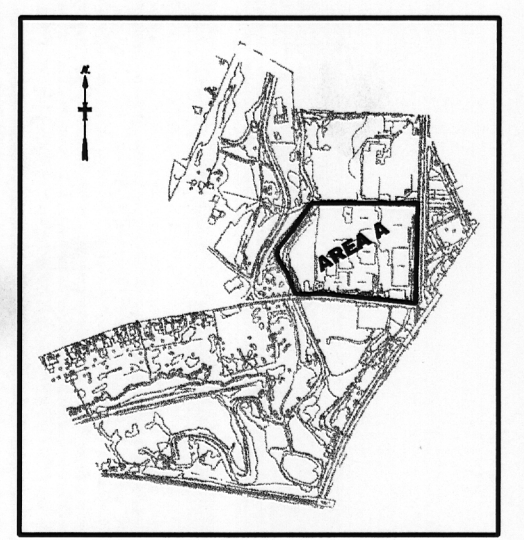
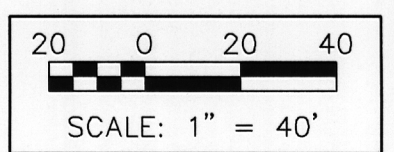
User: WELSHANS, Spec: PIRNIE, STANDARD File: I:\ACAD\PROJ\4812014\PERMIT CHANGE-2-27-06\M-8A.DWG Scale: 1:1 Date: 03/21/2006 Time: 10:55 Layout: Layout1



LEGEND:

- APPROXIMATE LIMITS OF TOP OF EXCAVATION
- INDICATES UTILITY SERVICE TO BE PERMANENTLY RELOCATED PRIOR TO DEMOLITION AND REMOVAL
- POTENTIAL RADIOLOGICAL CONTAMINATION AREA (SEE SHEET A-03A)

- NOTES:**
1. FOR GENERAL NOTES AND LEGEND SEE SHEET M-1A.
 2. ALL UTILITIES WITHIN THE LIMITS OF EXCAVATIONS NOT DESIGNATED TO BE RELOCATED SHALL BE REMOVED AND DISPOSED OF IN ACCORDANCE WITH THE TECHNICAL SPECIFICATIONS IF ENCOUNTERED DURING EXCAVATION.
 3. CONTRACTOR TO VERIFY INVERT ELEVATION OF MH-A8 PRIOR TO RELOCATION OF SANITARY SEWER LINE
 4. REMOVE EXISTING FENCE AS REQUIRED FOR UTILITY. REPLACE IN KIND FOLLOWING UTILITY INSTALLATION.
 5. CONTRACTOR SHALL USE TEMPORARY SHEET PILING TO STABILIZE SANITARY SEWER EXCAVATION WITHIN THE LIMITS OF THE SEDIMENT BASIN NO.1.
 6. CONTRACTOR SHALL LOCATE AND EXCAVATE ALONG FRENCH DRAIN AS DIRECTED BY REMEDIATION CONSTRUCTION MANAGER. EXCAVATION WILL NOT PROCEED BEYOND SURROUNDING CONCRETE WALLS.
 7. CONTRACTOR SHALL PLUG MANHOLES C1 AND C2 WITH CONCRETE. OUTFALL 002 SHALL BE REMOVED AND DISPOSED OFF-SITE.
 8. UTILITY TRENCHES SHALL BE CONSTRUCTED IN ACCORDANCE WITH DETAIL



D-05

REVISIONS			
NO.	BY	DATE	REMARKS
1	TCS	11/15/05	REVISED PER POST BID CHANGE
2	TCS	02/27/06	REVISED PER PERMIT CHANGE

DES	KZ
DWN	TT
CKD	GWD

MOLYCORP, INC
WASHINGTON, PA
SITE REMEDIATION CONSTRUCTION

UTILITIES RELOCATION PLAN
AREA A
SCALE: 1"=40'

COPYRIGHT © 2005
MALCOLM PIRNIE, INC.
DATE: JUNE 2005
M SHEET 8A OF 46
CAD REF. NO. M-8A

