



PATHFINDER

March 1, 2006

Mr. Stephen Cohen
Uranium Processing Section
Fuel Cycle Facilities Branch
Division of Fuel Cycle Safety and Safeguards
Office of Nuclear Material Safety and Safeguards
U.S. Nuclear Regulatory Commission
11545 Rockville Pike
Rockville, Maryland 20852-2738

Re: Docket No. 40-6622, License No. SUA-442

Dear Mr. Cohen:

We belatedly discovered a labeling error on the semi-annual ground water monitoring report as required by SUA-442 license condition 47C that we just submitted. Figures 3, 6, 9, 12, 15, 18, and 21 show Spring Creek sample site SC-3. Similarly, Table 3 lists SC-3. Condition 47A specifies sampling site Weir-2. In fact, site Weir-2 (located just downstream from SC-3, see the enclosed map) was sampled. The figures and Table 3 were mislabeled. The error has no impact on the conclusions of the report, and the error will be corrected in the next report. However, if you so desire, we can forward a revised report. Please let me know if you would like the report corrected.

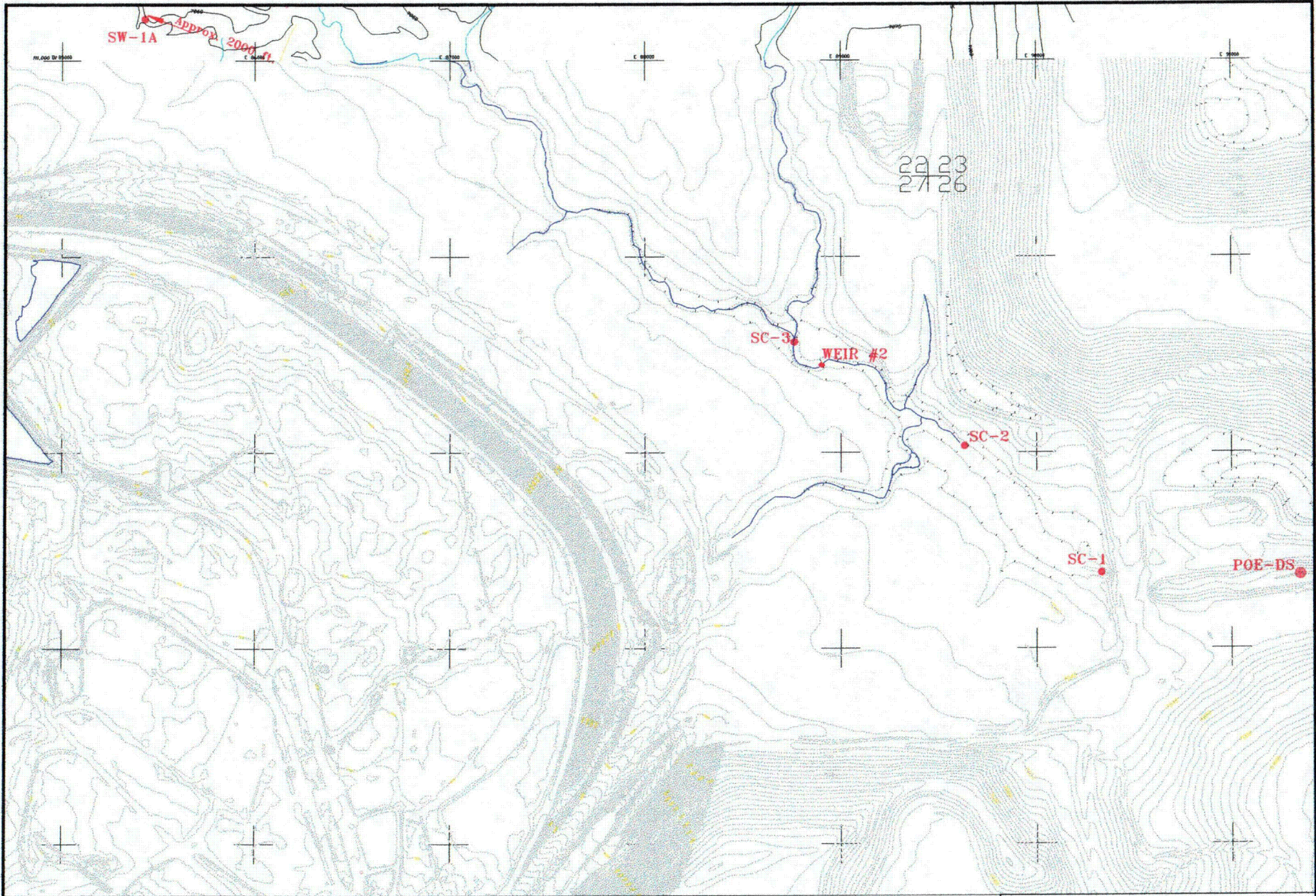
I would also like to take this opportunity to point out a typographical error in the license. Condition 47A refers to "SC-10 (POE)". The correct designation should be "SC-1 (POE)".

Sincerely,

T. W. Hardgrove
Manager, Reclamation Operations

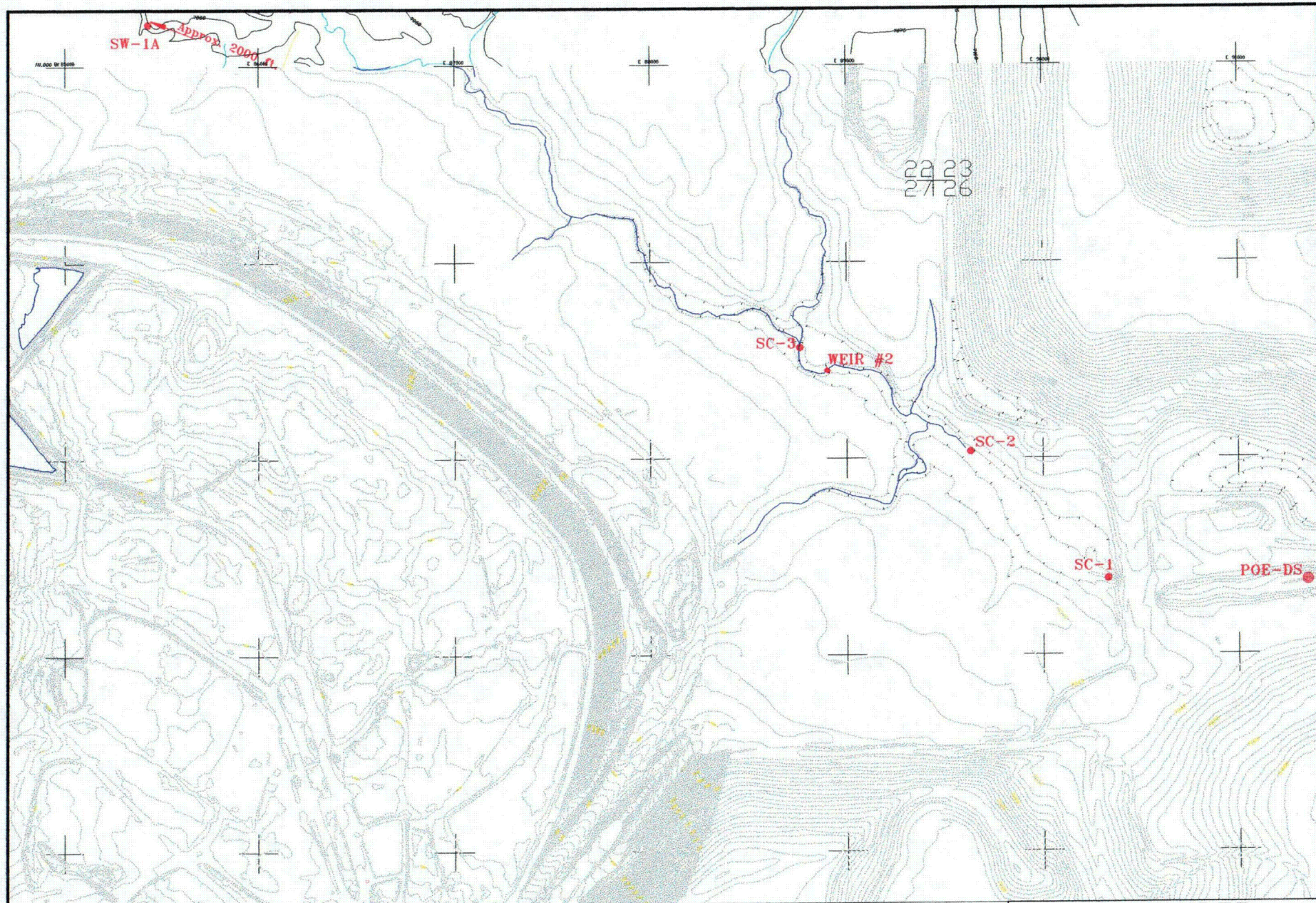
Enclosure

cc: J. Whitten, U.S. NRC – Region IV
D. L. Wichers



PATHFINDER
 PATHFINDER MINES CORPORATION
 SHIRLEY BASIN, WYOMING T28N, R78W
 LOCATION OF SURFACE
 WATER SAMPLING SITES

DRAWN BY: TGM DATE: 3-2006 Approx. Scale: 1"=700'
 SEMIANNUAL.DWG HYDRO-ENGINEERING L.L.C.



PATHFINDER

PATHFINDER MINES CORPORATION
SHIRLEY BASIN, WYOMING T28N, R28W

LOCATION OF SURFACE
WATER SAMPLING SITES

DRAWN BY: TGM	DATE: 3-2006	Approx. Scale: 1"=700'
SEMIANNUAL.DWG	HYDRO-ENGINEERING L.L.C.	