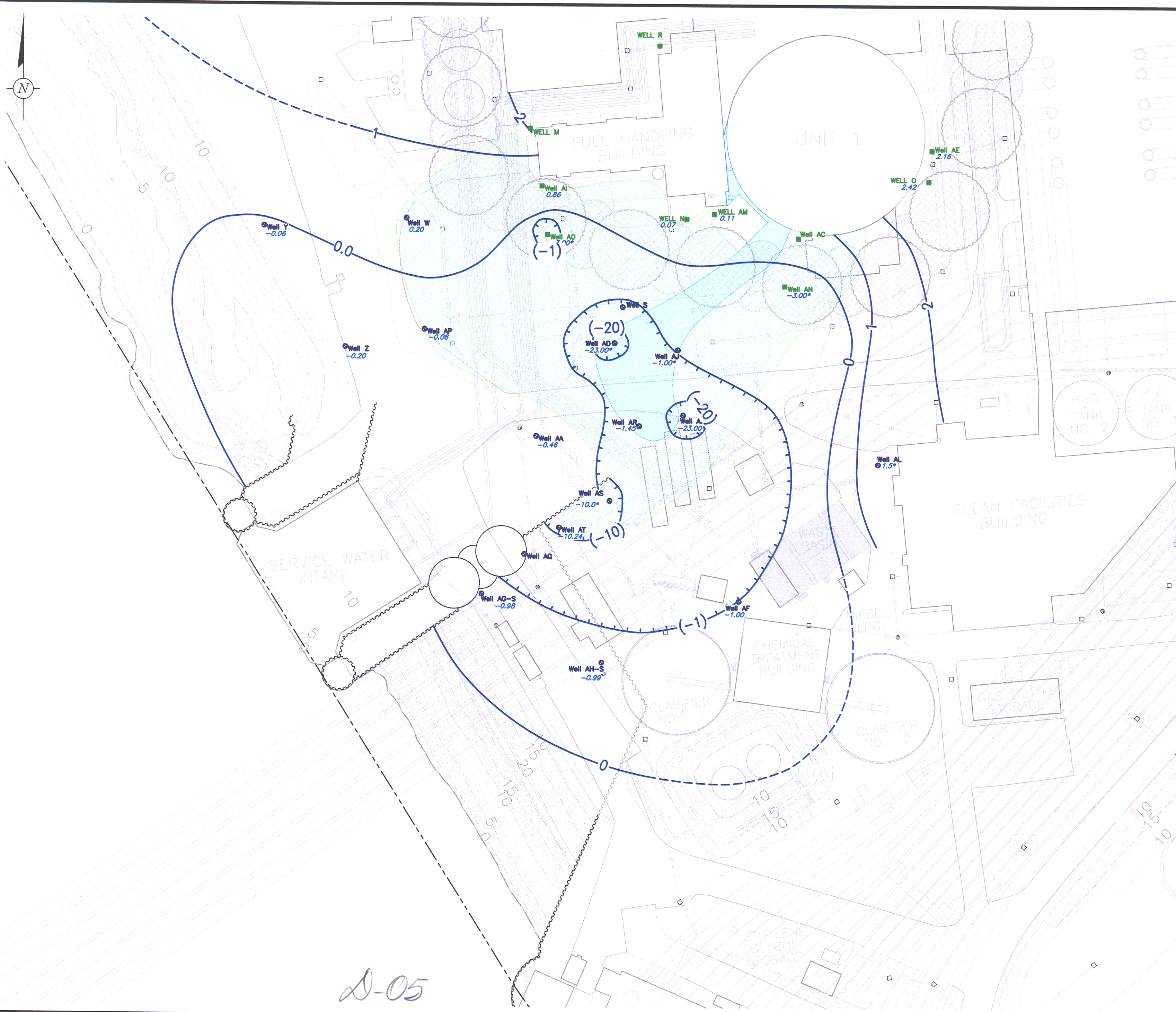
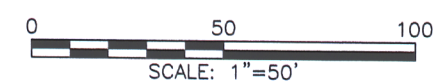


G:\PROJECT\PSE&G\Salem - Tritium\NP000571.0005 - Continued Reporting and Recovery\CADD\RAPP'S\RAPP 5\FIG-07 WATER TABLE ELEVATION CONTOURS DECEMBER 28, 2005.dwg, 27/ 2/2006 4:06pm copyright © 20 06



- LEGEND:**
- WELL R** ■ MONITORING WELL SCREENED IN THE SHALLOW, WATER-BEARING UNIT WITHIN THE LIMITS OF THE COFFERDAM, 20 FEET DEEP-TYPICAL (WELLS M, N, O, R, AC, AE, AI AND AM).
 - WELL S** ■ MONITORING WELL SCREENED IN THE SHALLOW, WATER-BEARING UNIT OUTSIDE THE LIMITS OF THE COFFERDAM, 35 FEET DEEP-TYPICAL (WELLS S, T, U, W, Y, Z, AA, AB, AD, AF, AG(SHALLOW & DEEP, AH(SHALLOW & DEEP), AJ AND AL).
 - WELL L** ■ MONITORING WELL SCREENED IN THE VINCENTOWN FORMATION, 80 FEET DEEP- TYPICAL (WELLS K, L, P, Q AND V).
 - 3.19** GROUNDWATER ELEVATION (FEET ABOVE MEAN SEA LEVEL - NAVD 1988)
 - 1.00** GROUNDWATER ELEVATION CONTOUR (0.5 FOOT INTERVAL)
 - ← GROUNDWATER FLOW DIRECTION
 - LIMIT OF GROUNDWATER WITH TRITIUM ABOVE 1,000,000 pCi/L
 - LIMIT OF GROUNDWATER WITH TRITIUM ABOVE 500,000 pCi/L
 - LIMIT OF GROUNDWATER WITH TRITIUM ABOVE 100,000 pCi/L
 - LIMIT OF GROUNDWATER WITH TRITIUM ABOVE THE NEW JERSEY GROUNDWATER QUALITY CRITERION (20,000 pCi/L)
 - - - PROPERTY BOUNDARY
 - - - BLOW DOWN PIPING
 - - - LIQUID "RAD" WASTE LINE
 - - - SERVICE WATER PIPING
 - - - CIRCULATING WATER OUTLET PIPING
 - - - CIRCULATING WATER INLET PIPING
 - - - STORM SEWER PIPING
 - CATCH BASIN
 - MANHOLE (STORM SEWER)
 - - - SHEET PILE - EXTENDS FROM ABOVE THE WATER TABLE THROUGH THE KIRKWOOD FORMATION
 - - - SHEET PILE - DOES NOT EXTEND TO AN ELEVATION ABOVE THE WATER TABLE.
 - AFST AUXILIARY FEEDWATER STORAGE TANK
 - PWST PRIMARY WATER STORAGE TANK
 - RWST REFUELING WATER STORAGE TANK

- NOTE:**
1. THE MEAN TIDE LEVEL OF THE DELAWARE RIVER AT ARTIFICIAL ISLAND IS 0.11 FT (NAVD 1988)
 2. CONTOUR INTERVAL FOR WATER LEVELS LESS THAN -1.0 FEET MSL IS LOGARITHMIC.
 3. EXTENT OF TRITIUM IN GROUNDWATER REPRESENTS DATA THROUGH JUNE/JULY 2005.
- * ESTIMATED BASED ON HISTORICAL DATA



NO.	DATE	REVISION DESCRIPTION	BY
			CKD



6 Terry Drive
Suite 300, Newtown, PA 18940
Tel: 267/685-1800 Fax: 267/685-1801



PSEG NUCLEAR, LLC
SALEM GENERATING STATION
ARTIFICIAL ISLAND
HANCOCK'S BRIDGE, NEW JERSEY

DRAWN
M. WASILEWSKI

DATE
1/9/2006

PROJECT MANAGER
P. MILIONIS

DEPARTMENT MANAGER
M. BEDARD

LEAD DESIGN PROF.
S. POTTER

CHECKED
C. SHARPE

PROJECT NUMBER
NP000571.0005

DRAWING NUMBER
7

WATER TABLE ELEVATION CONTOURS
DURING OPERATION OF THE
PERMANENT SYSTEM
DECEMBER 28, 2005