

Corscan™

www.corscanplus.com
740A NW Broad St.
Southern Pines, NC 28387
(910) 246-0434

Q-8

March 9, 2006

U.S.N.R.C.
Region I
475 Allendale Road
King of Prussia, PA 19406

Control: 138381

03036917

Re: License Number ~~47-25351-01~~ 32-31038-01

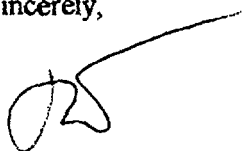
mm

To whom it may concern:

Please find attached the room diagram for our close out of our Summersville location.

Thank you for your attention to this matter.

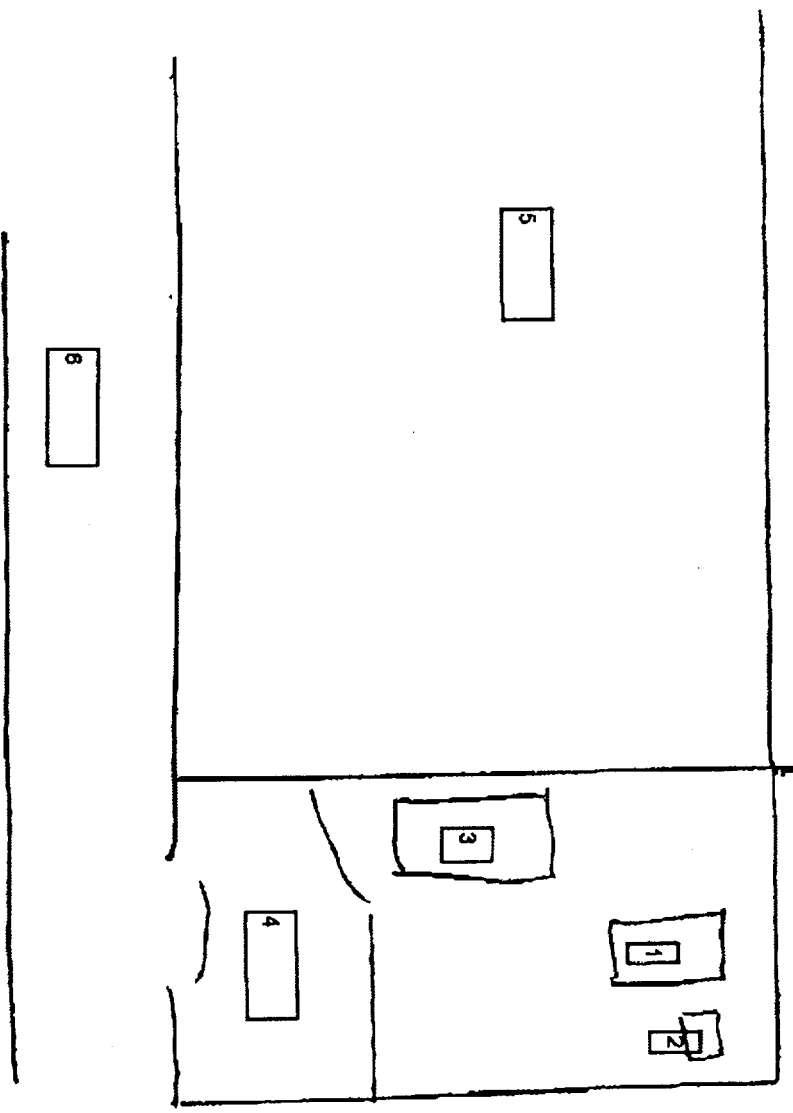
Sincerely,



Steven Walter, M.D. RSO
Authorized User
Administrator

138381

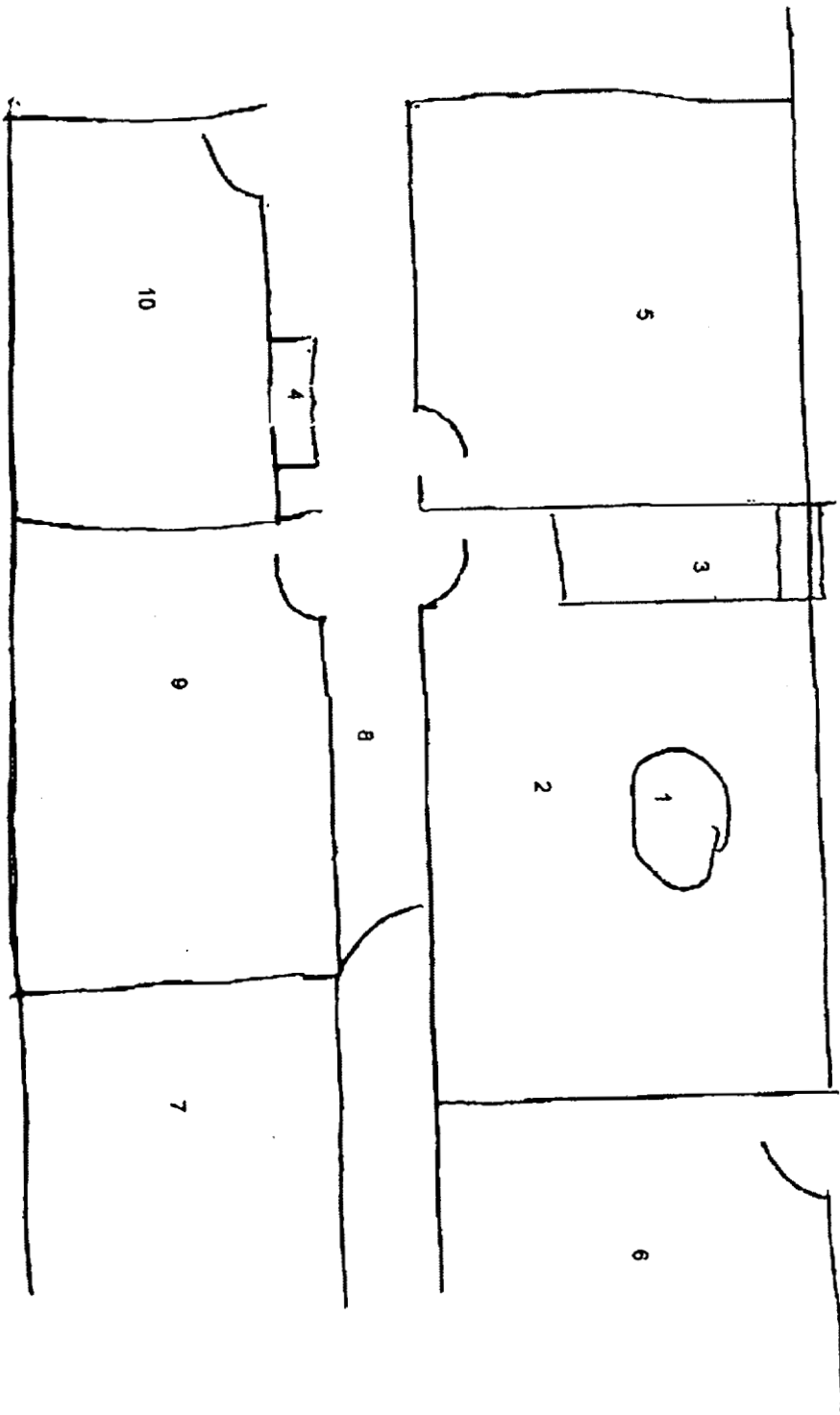
Room Diagram



- 1. Treadmill
- 2. Injection Stand
- 3. Exam Table
- 4. Office
- 5. Cardiac Rehab
- 6. Hall

4th floor treadmill room
 CorScan License Number 32-31038-01
 Outpatient Clinical Building
 Summersville Hospital
 400 Farview Heights Road
 Summersville, WV

Room Diagram



- 1. Camera
- 2. Nuclear Medicine Room
- 3. Hot lab area
- 4. Injector chair and table
- 5. Storage Room
- 6. Waiting Room
- 7. Office
- 8. Hall
- 9. Nuclear Medicine Office
- 10. Office

CorScan License Number 32-31038
 Outpatient Clinical Building
 2nd Floor Nuclear Medicine Department
 Summersville Hospital
 400 Fairview Heights Road
 Summersville, WV