

R 78 W

R 77 W

R 76 W

T 46 N

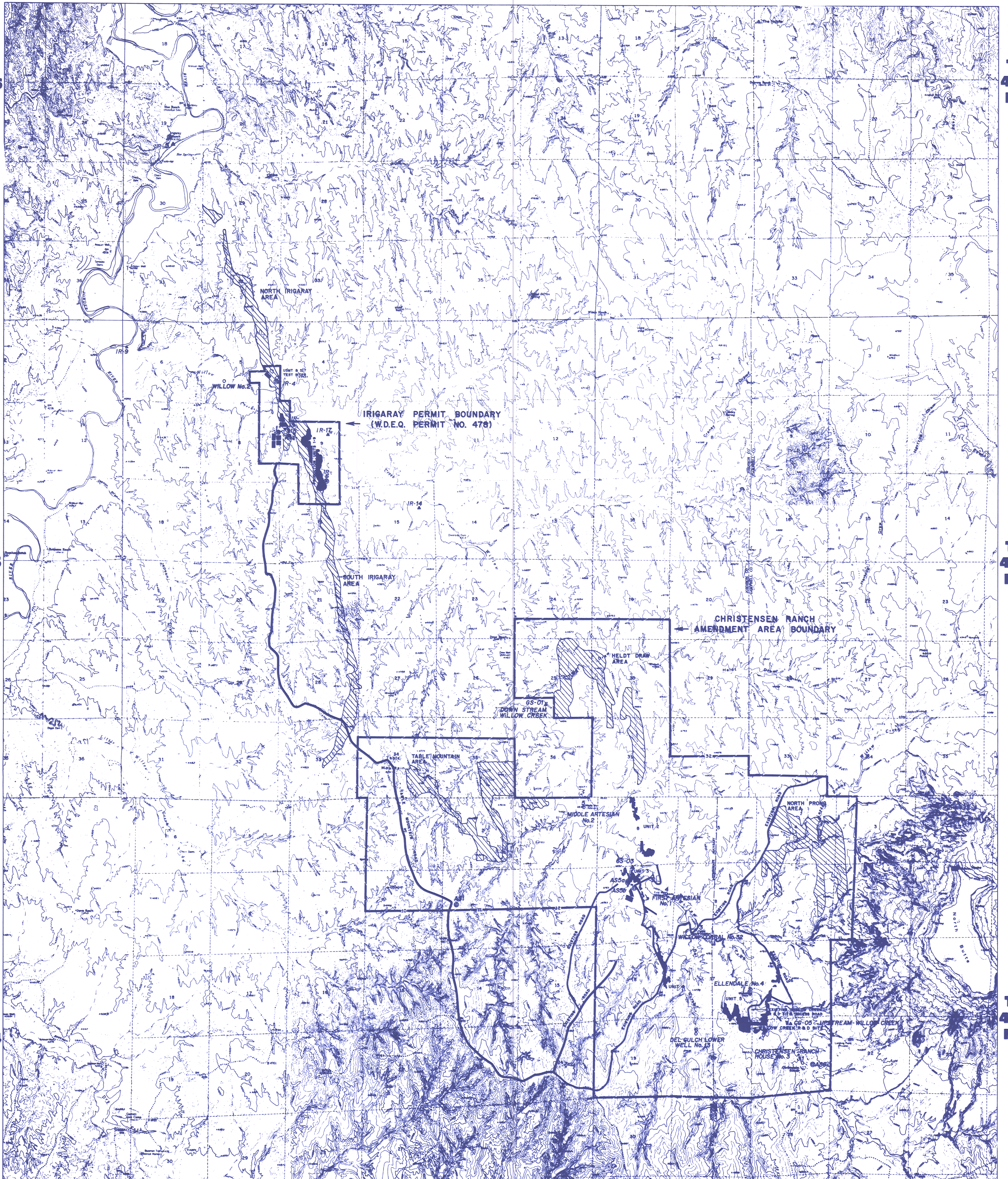
T 46 N

T 45 N

T 45 N

T 44 N

T 44 N



R 78 W

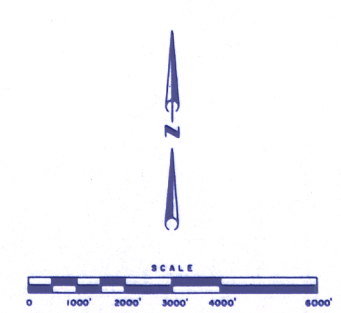
R 77 W

R 76 W

LEGEND

- WELL FIELD ACCESS ROADS
- HAUL ROAD - EXISTING ROAD
- WELLFIELD AREA
- DRAINAGE CULVERT LOCATION AND NUMBER
- TOPSOIL STOCKPILE LOCATION (SIZE APPROXIMATE)
- EVAPORATION PONDS
- FUTURE AREA OF DEVELOPMENT
- AIR SAMPLE LOCATION (RADON AND PARTICULATE)
- AIR SAMPLE LOCATION (RADON AND PARTICULATE)
- VEGETATION SAMPLE LOCATION
- SOIL SAMPLE LOCATION
- DIRECT RADIATION MONITOR LOCATION
- AIR SAMPLE LOCATION (RADON)
- VEGETATION SAMPLE LOCATION
- SOIL SAMPLE LOCATION
- DIRECT RADIATION MONITOR LOCATION
- STOCK & DOMESTIC WELL SAMPLE LOCATION
- REGIONAL GROUNDWATER MONITORING
- UPSTREAM & DOWNSTREAM SURFACE WATER SAMPLE LOCATION

D-03X



COGEMA Mining, Inc.
 P.O. Box 730 Mills, Wyoming 82644

PROJECT: IRIGARAY & CHRISTENSEN RANCH
 JOHNSON & CAMPBELL COUNTIES, WYOMING

TITLE: Irigaray and Christensen Ranch Environmental Monitoring Station Locations

DATE: BY: S.L. WICKERS SCALE: DRAWN BY: SMITH DATE: 8/28/97 FIGURE NO.: 5-5