

SYMBOLS	LEGEND
AO	AIR OPERATED
OA	OUTSIDE AIR
FAI	FRESH AIR INTAKE
RA	RETURN AIR
FC	FLEXIBLE CONNECTION
CFM	CUBIC FEET PER MINUTE
SD	SPLITTER DAMPER
AD	ACCESS DOOR
MO	MOTOR OPERATED
AS	ARCH STRUCTURE
STR	STRUCTURE
C-H	CONCRETE
V-C	VOLUME CONTROLLER
E.D.	EQUIPMENT DRAIN
C.R.	CONDENSATE RETURN
T	THROAT
CHLS.	CHILLED WATER SUPPLY
CHLR.	CHILLED WATER RETURN
PRV	PRESSURE REDUCING VALVE
W.M.	WIRE MESH
H.V.	HEATING & VENTILATION
CL	CENTER LINE
D.D.	DOUBLE DEFLECTION
C.D.	GRAVITY DAMPER
C.D.M.	GALLONS PER MINUTE
C.D.F.	CYLINDER
B.F.	BUTTERFLY VALVE
VD	VOLUME DAMPER
AD	AUTOMATIC ACTIVATED DAMPER
PENETRATION TYPE SEE G-191256	
INSULATION TYPE	
PENETRATION TYPE	
FLOW ELEMENT	
GATE VALVE	
GLOBE VALVE	
CHECK VALVE	
FLOAT AND THERMOSTATIC TRAP	
STRAINER	
THERMOSTAT	
SUPPLY AIR	
EXHAUST AIR	
MANUAL OPERATED DAMPER	
MOTOR OPERATED DAMPER	
LOCAL CONTROL	
THERMOSTAT	
ANGLE	
MANUAL BUTTERFLY DAMPER	
MOTOR OPERATED BUTTERFLY DAMPER	
PIPING BY OTHERS	
AUTOMATIC VALVE	
GAGE	
THERMOMETER	
AIR VENT	
PIPE ANCHOR	
EXPANSION JOINT	
THERMOSTATIC TRAP	
FLEX.CONN.	
MOISTURE TRAP	

- NOTES:**
1. PIPING 2 INCHES AND SMALLER TO BE FIELD RUN. FIELD TO LOCATE, DETERMINE SIZE AND SET ALL PIPE SLEEVES IN CONCRETE FLOORS BEFORE CONCRETE IS PLACED. SEE STRUCTURAL DRAWINGS FOR TYPICAL DETAILS OF PIPE SLEEVES AND FOR FLOOR OPENINGS REQUIRING SPECIAL FLOOR FRAMING.
 2. OPENINGS 8 INCHES IN DIAMETER AND OVER FOR SHOP FABRICATED PIPING IN GRATING AND CHECKERED PLATE FLOORS, SHALL BE PROVIDED IN THE SHOP. ALL OTHER OPENINGS ARE TO BE PROVIDED IN THE FIELD.
 3. ALL OPENINGS, EXCEPT THOSE FOR STRESS ANALYZED PIPE LINES, SHALL CLEAR PIPE INSULATION BY A MINIMUM OF 8 INCHES BEYOND EXTREME PIPE MOVEMENT.
 4. ALL HEATING, VENTILATING AND AIR CONDITIONING EQUIPMENT FURNISHED SHALL SUIT THE ARRANGEMENTS, OPENINGS, BASES, SUPPORTS ETC., PROVIDED FOR THE EQUIPMENT AS INDICATED ON THESE DRAWINGS. ANY CHANGES ON THESE DRAWINGS RESULTING FROM EQUIPMENT DEVIATIONS SHALL BE THE RESPONSIBILITY OF THE HEATING AND VENTILATING CONTRACTOR.
 5. ALL THERMOSTATS LOCATED ON STEEL COLUMNS & EXTERIOR WALLS TO BE MOUNTED ON INSULATED BACKING BOARD APPROXIMATELY 5 FT. ABOVE FINISHED FLOOR.
 6. ALL DUCT SIZES NOTED ARE SHEET METAL DIMENSIONS.
 7. PITCH ALL STEAM SUPPLY & CONDENSATE RETURN PIPING TO PUMPS IN DIRECTION OF FLOW 1" IN 40 FT. EXCEPT AS NOTED PITCH ALL BRANCH RUNOUT LINES 1" 10 FT. PROVIDE BRANCH CONNECTIONS TO ALL COILS WITH A MINIMUM OF FOUR (4) OFFSETS ARRANGED FOR FLEXIBILITY TO PERMIT COIL REMOVAL.
 8. ALL DRYWELL ATMOSPHERE FLOWS ARE ESTIMATES AND ARE PROVIDED FOR INFORMATION ONLY.
 9. FLOW DIRECTION REVERSED AT RRU-17A AND RRU-17B (AS-BUILT)

REFERENCE DWGS.

LIST OF DRAWINGS	NO.	DATE	DESCRIPTION
HVAC - FLOW DIAGRAM - TURBINE	A-19134		
HVAC - FLOW DIAGRAM - CONTROL ROOM BLDG.	G-191237		
HVAC - EQUIP. SCHEDULE & CONTROL DIAGRAM	G-191255		
HVAC - DETAILS	G-191256		
HVAC - DRYWELL	G-191244		
MECH - COMPOSITE - PRIMARY CONTAINMENT	SH-1-04		
HVAC - EQUIPMENT ROOM SH-1	G-191246		
HVAC - REACTOR BUILDING PLANS SH-1	G-191249		
HVAC - TURBINE BLDG. FLOOR	G-191241		
HVAC - CONTROL ROOM AREA	G-191243		
HVAC - OFFICE & SERVICE AREA	G-191242		

REV	DESCRIPTION	CHKD.	APPD.
33	REVISED PER CU 2002-034		
32	REVISED PER MM 2002-046, JO 02-0159 & ER 2002-2166.01		

3-11-04 3-12-04 3-16-04
 NL WD RB
 7-18-03 7-18-03 7-18-03
 NL WD GSB

ENTERY
 ENTERGY NUCLEAR VERMONT YANKEE
 VERMONT, VERMONT

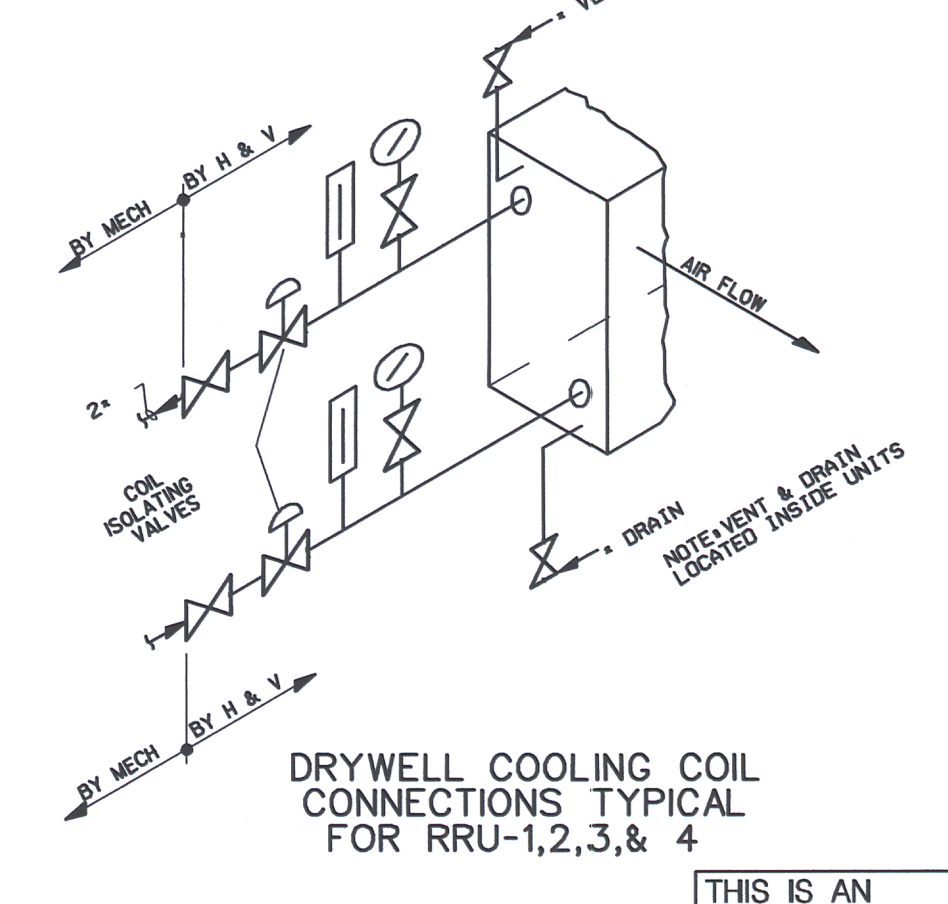
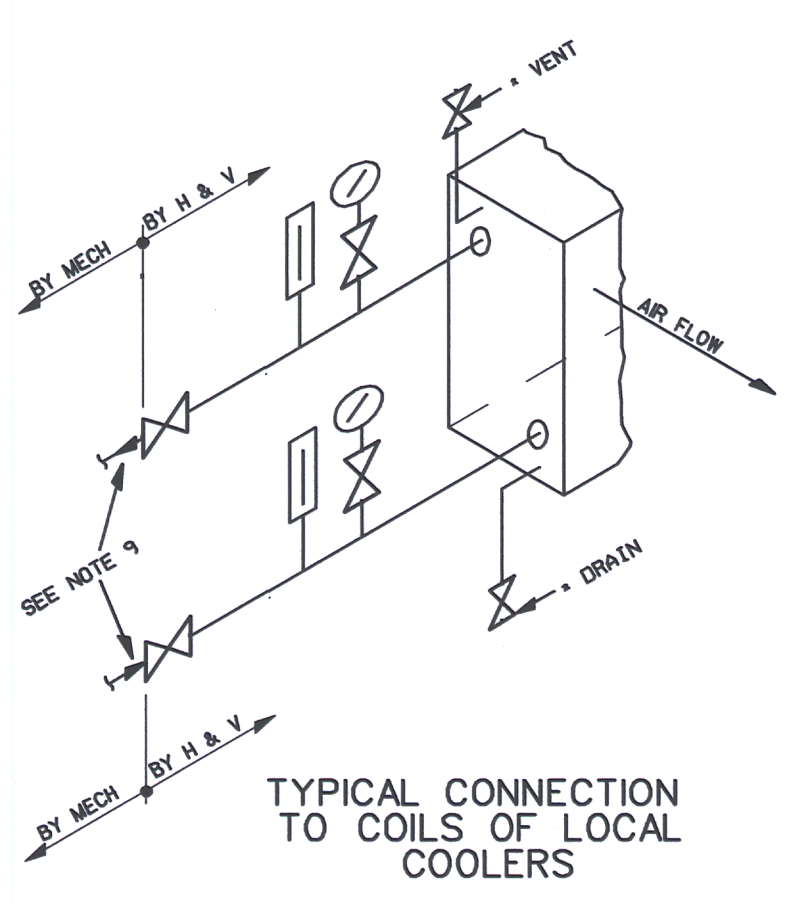
DRAWING TITLE: HVAC-FLOW DIAGRAM REACTOR BUILDING
 DRAWING NO.: G-191238



COMPONENTS SUBJECT TO AMR

- █ HIGH PRESSURE COOLANT INJECTION SYSTEM AMRM-05
- █ STANDBY GAS TREATMENT SYSTEM AMRM-07
- █ PRIMARY CONTAINMENT
- █ ATMOSPHERE CONTROL AND ATMOSPHERE DILUTION SYSTEM AMRM-08
- █ HEATING, VENTILATION AND AIR CONDITIONING SYSTEMS AMRM-19

NO.	DATE	DESCRIPTION	BY	ENG	CHK	APP
LRA-G-191238-0 LRA-G-191238_33.DGN N/A						



THIS IS AN FSAR DRAWING

MINI-PRINT

D-42