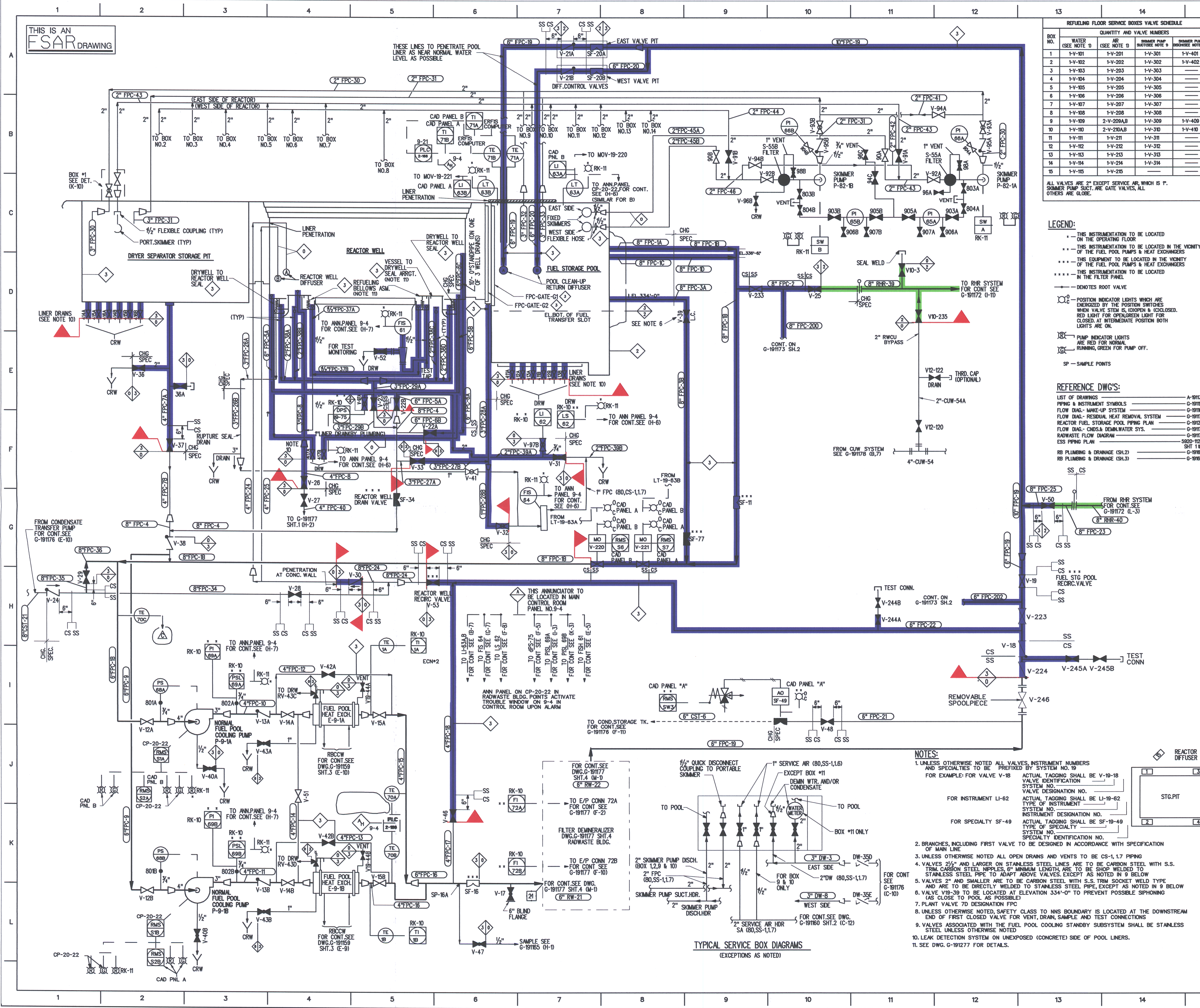


THIS IS AN FSAR DRAWING



REFUELING FLOOR SERVICE BOXES VALVE SCHEDULE

BOX NO.	WATER (SEE NOTE 1)	AR (SEE NOTE 1)	SKIMMER PUMP (SEE NOTE 1)	SKIMMER PUMP (SEE NOTE 1)
1	1-V-101	1-V-201	1-V-301	1-V-401
2	1-V-102	1-V-202	1-V-302	1-V-402
3	1-V-103	1-V-203	1-V-303	---
4	1-V-104	1-V-204	1-V-304	---
5	1-V-105	1-V-205	1-V-305	---
6	1-V-106	1-V-206	1-V-306	---
7	1-V-107	1-V-207	1-V-307	---
8	1-V-108	1-V-208	1-V-308	---
9	1-V-109	2-V-209A,B	1-V-309	1-V-409
10	1-V-110	2-V-209A,B	1-V-310	1-V-410
11	1-V-111	1-V-211	1-V-311	---
12	1-V-112	1-V-212	1-V-312	---
13	1-V-113	1-V-213	1-V-313	---
14	1-V-114	1-V-214	1-V-314	---
15	1-V-115	1-V-215	---	---

PIPING LINE LIST

LINE NO.	LINE SIZES	PIPE SCH.	MATL.	DESIGN PRESS. PSIG	TEMP. °F	FRASCO SPEC. PART NO.	LOCN.
FPC-1A	8"	40	SS-1	150	175	LRR	C-8
FPC-1B	6"	40	SS-1	150	175	LRR	D-9
FPC-1C	8"	40	SS-1	150	175	LRR	C-8
FPC-1D	8"	40	SS-1	150	175	LRR	C-9
FPC-2	8"	40	SS-1	150	175	LRR	C-10
FPC-3A	8"	40	SS-1	150	175	LRR	E-7
FPC-3B	8"	40	SS-1	150	175	LRR	E-8
FPC-4	8"	40	SS-1	150	175	LRR	F-5
FPC-5A	8"	40	SS-1	150	175	LRR	G-5
FPC-5B	8"	40	SS-1	150	175	LRR	G-6
FPC-6A	8"	40	SS-1	150	175	LRR	E-9
FPC-6B	8"	40	SS-1	150	175	LRR	E-5
FPC-6C	8"	40	SS-1	150	175	LRR	C-6
FPC-7A	4"	40	SS-1	150	175	LRR	F-2
FPC-7B	4"	40	SS-1	150	175	LRR	G-2
FPC-8	4"	40	SS-1	150	175	LRR	F-2
FPC-9	4"	40	SS-1	150	175	LRR	K-1
FPC-10	4"	40	SS-1	150	175	LRR	F-3
FPC-11	4"	40	SS-1	150	175	LRR	K-3
FPC-12	4"	40	SS-1	150	175	LRR	F-3
FPC-13	4"	40	SS-1	150	175	LRR	K-4
FPC-14	4"	40	SS-1	150	175	LRR	K-4
FPC-15	4"	40	SS-1	150	175	LRR	J-5
FPC-16	4"	40	SS-1	150	175	LRR	L-5
FPC-17	4"	40	SS-1	150	175	LRR	K-6
FPC-18	4"	40	SS-1	150	175	LRR	J-6
FPC-19	6"	40	SS-1	150	175	LRR	A-10
FPC-20	6"	40	SS-1	150	175	LRR	A-8
FPC-21	6"	40	SS-1	150	175	LRR	I-11
FPC-22	6"	40	SS-1	150	175	LRR	H-9
FPC-23	8"	40	SS-1	150	175	LRR	G-13
FPC-24	4"	40	SS-1	150	175	LRR	F-3
FPC-25	8"	40	SS-1	150	175	LRR	E-3
FPC-26A	3"	40	SS-1	150	175	LRR	E-3
FPC-26B	3"	40	SS-1	150	175	LRR	E-3
FPC-27A	3"	40	SS-1	150	175	LRR	F-5
FPC-27B	3"	40	SS-1	150	175	LRR	F-5
FPC-28A	3"	40	SS-1	150	175	LRR	F-6
FPC-28B	3"	40	SS-1	150	175	LRR	G-6
FPC-29A	3"	40	SS-1	150	175	LRR	E-5
FPC-29B	3"	40	SS-1	150	175	LRR	F-5
FPC-30	3"	40	SS-1	150	175	LRR	B-12
FPC-31	3"	40	SS-1	150	175	LRR	B-10
FPC-32	3"	40	SS-1	150	175	LRR	C-7
FPC-33	3"	40	SS-1	150	175	LRR	C-7
FPC-34	8"	20	SS-1	150	175	LRR	H-3
FPC-35	8"	20	SS-1	150	175	LRR	H-1
FPC-36	8"	20	SS-1	150	175	LRR	H-1
FPC-37A	1/2"	80	CS-1	150	175	LRR	D-4
FPC-37B	1/2"	80	CS-1	150	175	LRR	E-4
FPC-38A,B,C,D	2"	40	SS-1	150	175	LRR	E-4/B
FPC-39A	2"	80	SS-1	150	175	LRR	F-6
FPC-39B	2"	80	SS-1	150	175	LRR	F-7
FPC-40	4"	40	SS-1	150	175	LRR	G-4
FPC-41	2"	80	SS-1	150	175	LRR	B-11
FPC-42	2"	80	SS-1	150	175	LRR	B-11
FPC-43	2"	80	SS-1	150	175	LRR	B-11
FPC-44	2"	80	SS-1	150	175	LRR	B-9
FPC-45A,B	2"	40	SS-1	150	175	LRR	B-8
FPC-46	2"	40	SS-1	150	175	LRR	C-9
CST-6	6"	40	SS-1	150	175	LRR	I-8
CST-21	8"	40	SS-1	150	175	LRR	H-1
DW-3	3"	40	SS-1	150	175	LRR	L-11
DW-8	3"	40	SS-1	150	175	LRR	L-11
FPC-200	2"	40	SS	322	85/175	C-5	
FPC-200A,B	8"	40	SS	322	85/175	F-5	
FPC-201A,B	6"	40	SS	175	175	G-7	
FPC-202A,B	6"	40	SS	175	175	G-12	
FPC-202	6"	40	SS	150	175	J-11	
FPC-203	6"	40	SS	150	175	D-13	
SW-800	8"	40	SS	125	85/150	B-8	
SW-800A,B	8"	40	SS	125	85/150	D-6	
SW-801	8"	40	SS	125	85/150	E-10	
SW-801A,B	8"	40	SS	125	85/150	E-10	
SW-803	2"	40	SS	125	85/150	B-7	
SW-804	2"	80	SS-1	125	85/150	L6	

LEGEND:

- THIS INSTRUMENT TO BE LOCATED ON THE OPERATING FLOOR
- THIS INSTRUMENT TO BE LOCATED IN THE VICINITY OF THE FUEL POOL PUMPS & HEAT EXCHANGERS
- THIS EQUIPMENT TO BE LOCATED IN THE VICINITY OF THE FUEL POOL PUMPS & HEAT EXCHANGERS
- THIS INSTRUMENT TO BE LOCATED IN THE FILTER PANEL
- DENOTES ROOT VALVE
- POSITION INDICATOR LIGHTS WHICH ARE ENERGIZED BY THE POSITION SWITCHES WHEN VALVE IS OPEN & DEENERGIZED FOR CLOSED AT INTERMEDIATE POSITION BOTH LIGHTS ARE ON
- PUMP INDICATOR LIGHTS ARE RED FOR NORMAL RUNNING, GREEN FOR PUMP OFF.
- SP - SAMPLE POINTS

REFERENCE DWGS:

- LIST OF DRAWINGS --- A-91134
- PIPING & INSTRUMENT SYMBOLS --- G-91165
- FLOW DIAG. MAKE-UP SYSTEM --- G-91161
- FLOW DIAG. RESIDUAL HEAT REMOVAL SYSTEM --- G-91172
- REACTOR FUEL STORAGE POOL PIPING PLAN --- G-91128
- FLOW DIAG. CHMS & DEMIN. WATER SYS. --- G-91176
- RAWWASTE FLOW DIAGRAM --- G-91177
- ESS PIPING PLAN --- 9820-1259 SHT. 1 & 2
- RB PLUMBING & DRAINAGE (SH.2) --- G-91169
- RB PLUMBING & DRAINAGE (SH.3) --- G-91170

NOTES:

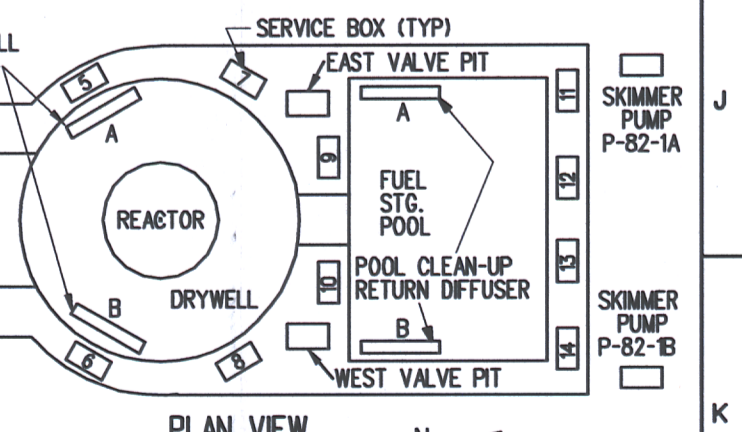
- UNLESS OTHERWISE NOTED ALL VALVES, INSTRUMENT NUMBERS AND SPECIALTIES TO BE PREFIXED BY SYSTEM NUMBER. FOR EXAMPLE: FOR VALVE V-18 ACTUAL TAGGING SHALL BE V-19-18 VALVE IDENTIFICATION SYSTEM NO. VALVE DESIGNATION NO.
- BRANCHES, INCLUDING FIRST VALVE TO BE DESIGNED IN ACCORDANCE WITH SPECIFICATION
- UNLESS OTHERWISE NOTED ALL OPEN DRAINS AND VENTS TO BE CS-1, 1.7 PIPING
- VALVES 2" AND LARGER ON STAINLESS STEEL LINES ARE TO BE CARBON STEEL WITH S.S. TRIM. CARBON STEEL NIPPLES, 6" MINIMUM LENGTH, ARE TO BE SHOP WELDED TO STAINLESS STEEL PIPE TO ADAPT ABOVE VALVES EXCEPT AS NOTED IN 9 BELOW
- VALVES 2" AND SMALLER ARE TO BE CARBON STEEL WITH S.S. TRIM SOCKET WELD TYPE AND ARE TO BE DIRECTLY WELDED TO STAINLESS STEEL PIPE, EXCEPT AS NOTED IN 9 BELOW
- VALVE V18-39 TO BE LOCATED AT ELEVATION 334'-0" TO PREVENT POSSIBLE SIPHONING (AS CLOSE TO POOL AS POSSIBLE)
- PLANT VALVE 7D DESIGNATION FPC
- UNLESS OTHERWISE NOTED, SAFETY CLASS TO INS. BOUNDARY IS LOCATED AT THE DOWNSWEEP END OF STRICTLY CLOSED VALVE FOR VENT, DRAIN, SAMPLE AND TEST CONNECTIONS
- VALVES ASSOCIATED WITH THE FUEL POOL COOLING STANDBY SUBSYSTEM SHALL BE STAINLESS STEEL UNLESS OTHERWISE NOTED
- LEAK DETECTION SYSTEM ON UNEXPOSED (CONCRETE) SIDE OF POOL LINERS.
- SEE DWG. G-91277 FOR DETAILS.

SYSTEM INTENDED FUNCTION BOUNDARY

COMPONENTS SUBJECT TO AMR

RESIDUAL HEAT REMOVAL SYSTEM AMR-02

FUEL POOL COOLING SYSTEMS AMR-14



EQUIP. & INSTR. SCHEDULE FOR SCHEMATIC PURPOSE ONLY

REV	DESCRIPTION	BY	CHKD.	APP.
35	REVISED PER EOR 2003-1102	NL	WD	RB
36	REVISED PER YVDC 2003-01-3, JO 2003-0079	NL	WD	PAR.

ENTERGY NUCLEAR VERMONT YANKEE
VERNON, VERMONT

FLOW DIAGRAM FUEL POOL COOLING & CLEANUP SYSTEM

DRAWING NO. G-191173 SH. 1

4-1-05	DESCRIPTION	BY	ENG	CHKD	APP
REVISIONS					
LRA-G-191173-SH-01-0					
CAD FILE LRA-G-191173-SH-01_36.DGN					
PLOT FILE N/A					

31