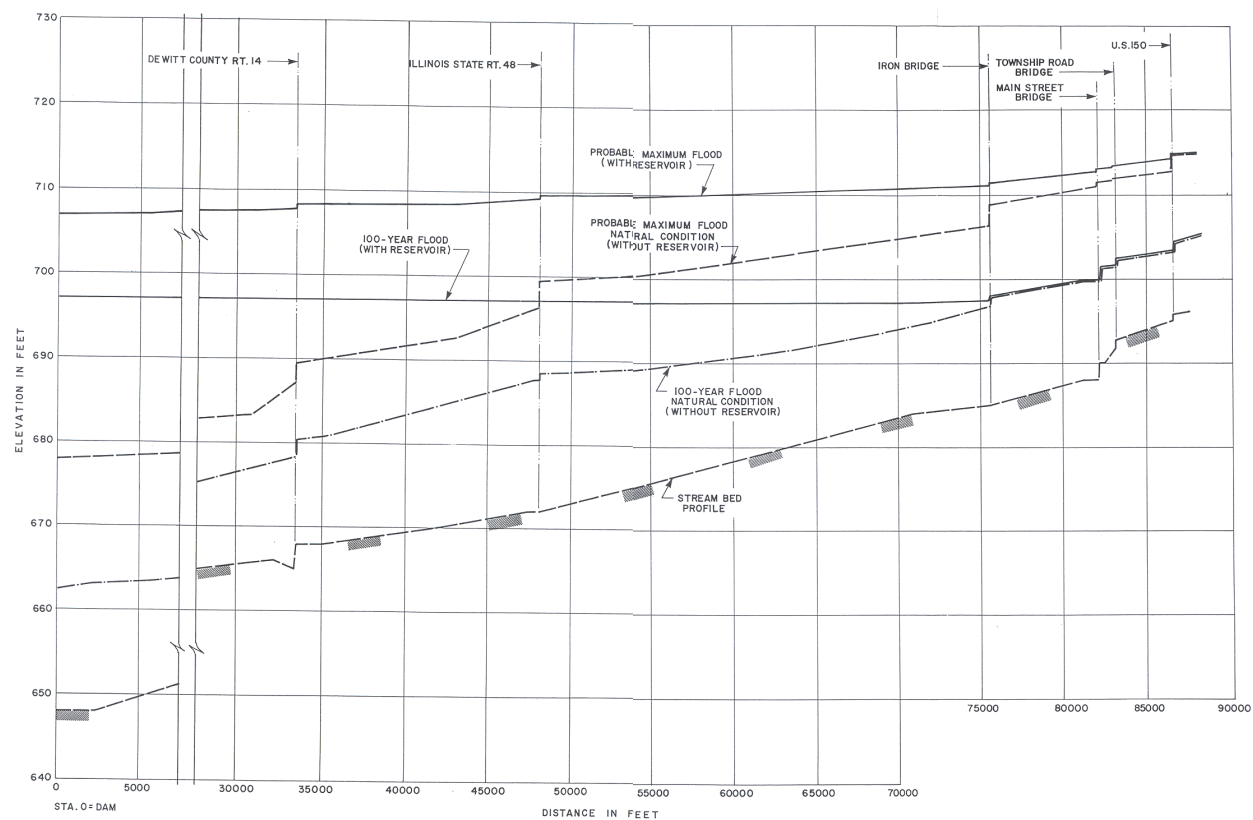


Site Safety Analysis Report for  
the EGC Early Site Permit

**Figure 2.4-7**  
**Water Surface Profiles**  
**Salt Creek**

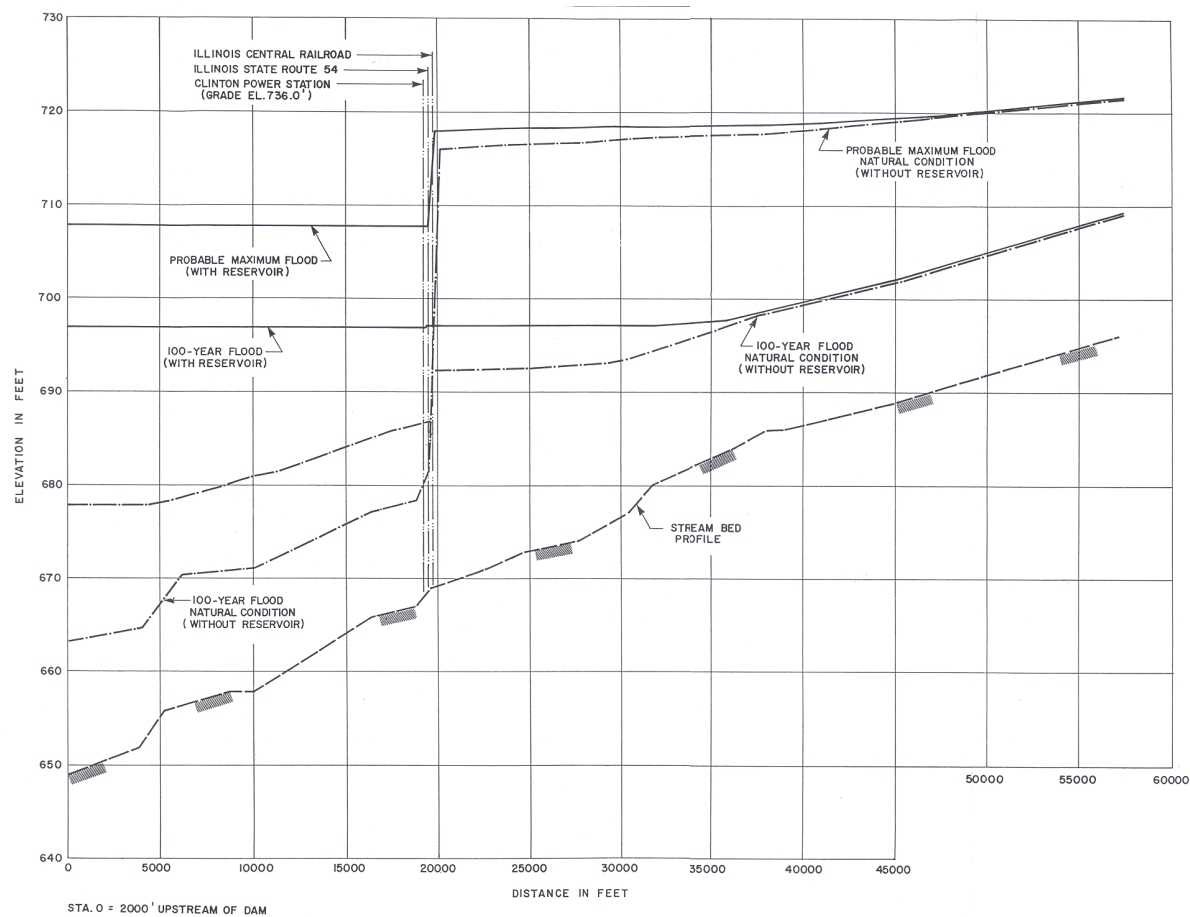


**Legend**

Data Source:  
CPS, 1982

Not to Scale

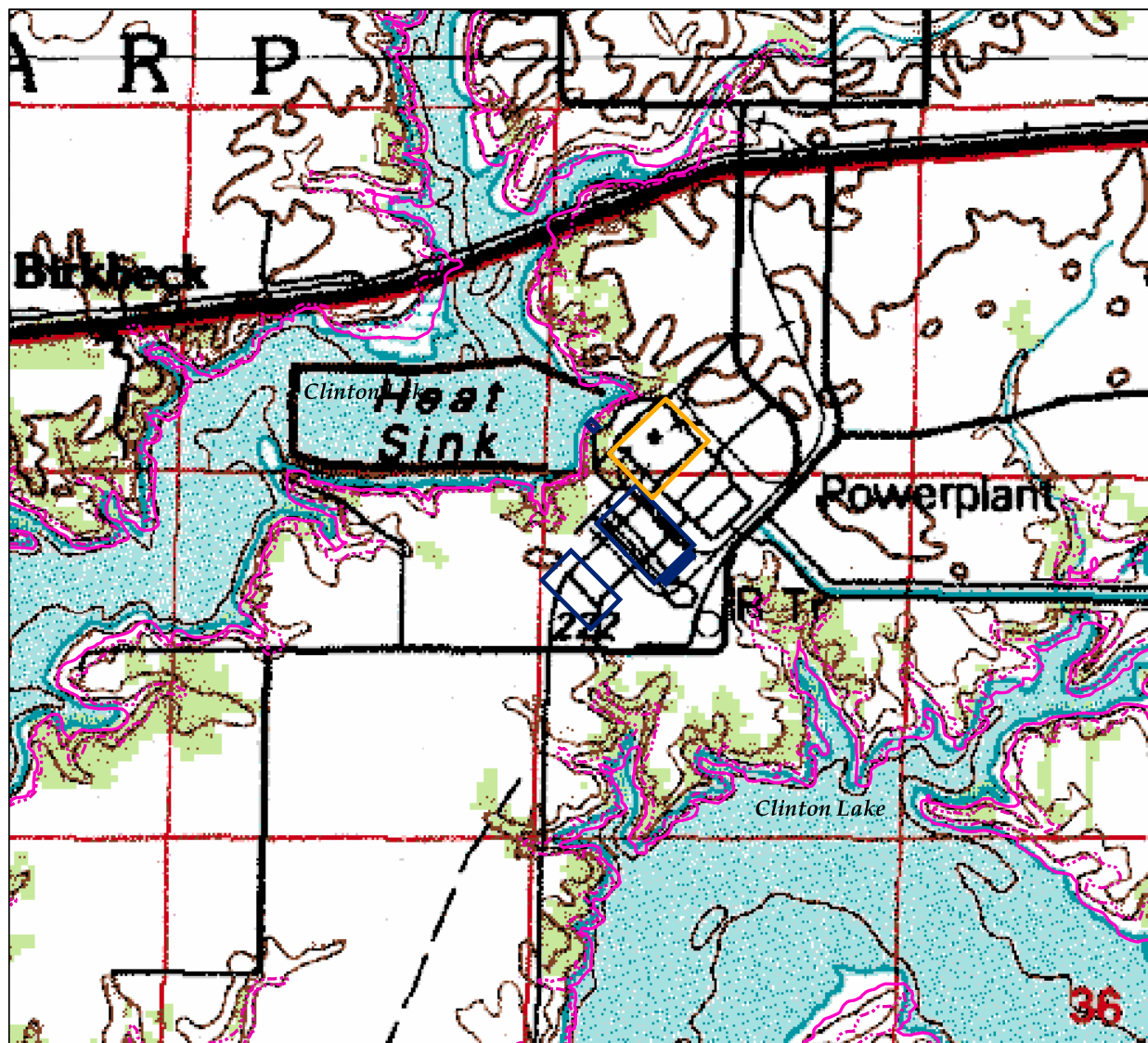
**Figure 2.4-8**  
**Water Surface Profiles**  
**of North Fork Salt Creek**



**Legend**

Data Source:  
CPS, 1982

Not to Scale



Site Safety Analysis Report for  
the EGC Early Site Permit

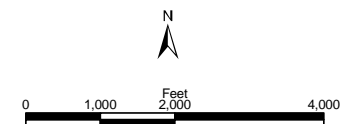
**Figure 2.4-9  
Flood Prone Area**

**Legend**

- CPS Facility
- Proposed Areas for EGC ESP Facility Structures
- 100-year Flood Zone Boundary
- Probable Maximum Flood Zone Boundary (708.9 ft)

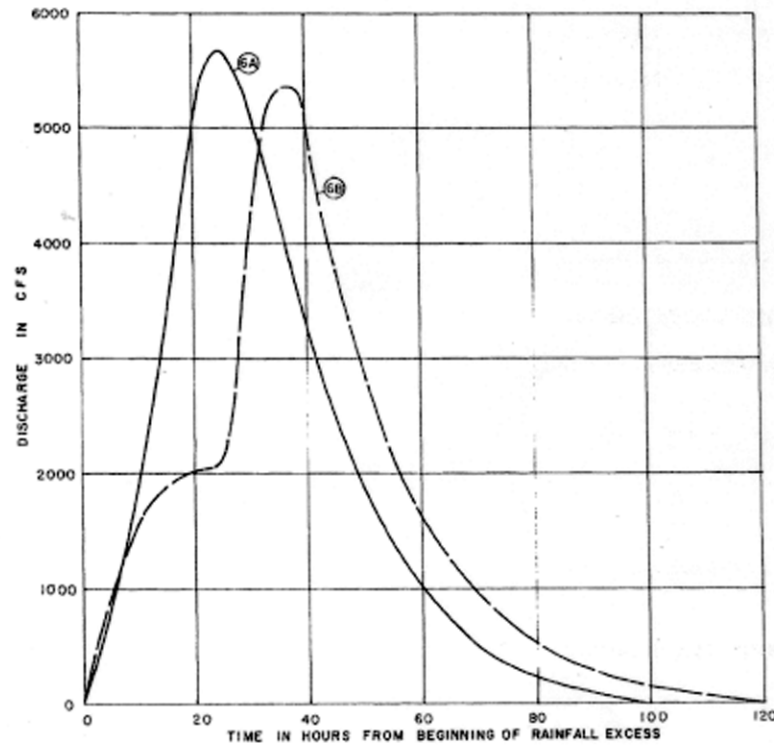
Note: The Probable Maximum Flood Zone Boundary and the 100-year Flood Zone Boundary were derived from USGS National Digital Elevation Model Data. The Probable Maximum Flood Elevation is 708.9 ft (216 m). The 100-year flood is 697 ft (212 m). Variations in mapping accuracy between the map base and the flood boundaries derived from the USGS Digital Elevation Model are apparent in locations on the map.

Data Sources:  
USGS, 1984 and 1989  
USGS, 1999  
ISWS, 1996  
CPS, 2002



**Figure 2.4-10**

**Unit Hydrographs for Salt Creek  
at Dam Site Under Natural River  
Conditions**



Legend

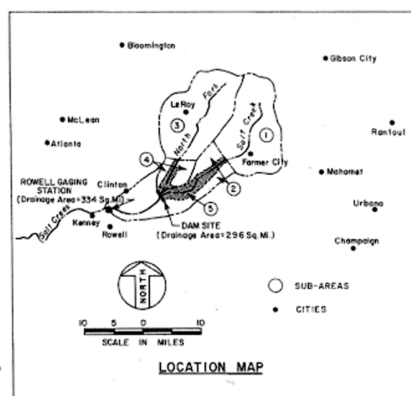
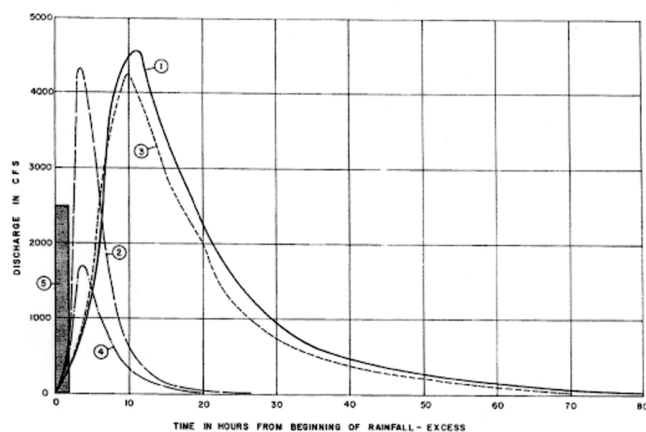
Data Source  
CPS, 2002

UNIT GRAPH DESIGNATION	UNIT DURATION HOURS	LOCATION	DRAINAGE AREA SQ. MILES	REMARKS
6A	2	DAM SITE	296	DERIVED FROM SYNTHETIC METHOD IN "UNIT HYDROGRAPHS IN ILLINOIS" BY W. D. MITCHELL
6B	2	DAM SITE	296	DERIVED FROM ROWELL STATION UNIT HYDROGRAPH ADJUSTED BY AREA RATIO OF 296/334 (FROM "UNIT HYDROGRAPHS IN ILLINOIS" BY W. D. MITCHELL

Not to Scale

Site Safety Analysis Report for  
the EGC Early Site Permit

**Figure 2.4-11**  
**Unit Hydrographs for**  
**Sub-Basin Areas**



UNIT GRAPH NO.	UNIT DURATION HOURS	AREA REPRESENTED IDENTIFICATION	SQ. MI.	REMARKS
①	2	SUB-AREA ①	126	BASIN ABOVE HEAD OF SALT CREEK FINGER
②	2	SUB-AREA ②	36	LOCAL AREA OF SALT CREEK FINGER
③	2	SUB-AREA ③	111	BASIN ABOVE HEAD OF NORTH FORK FINGER
④	2	SUB-AREA ④	15	LOCAL AREA OF NORTH FORK FINGER
⑤	2	SUB-AREA ⑤	8	RESERVOIR SURFACE AREA

**Legend**

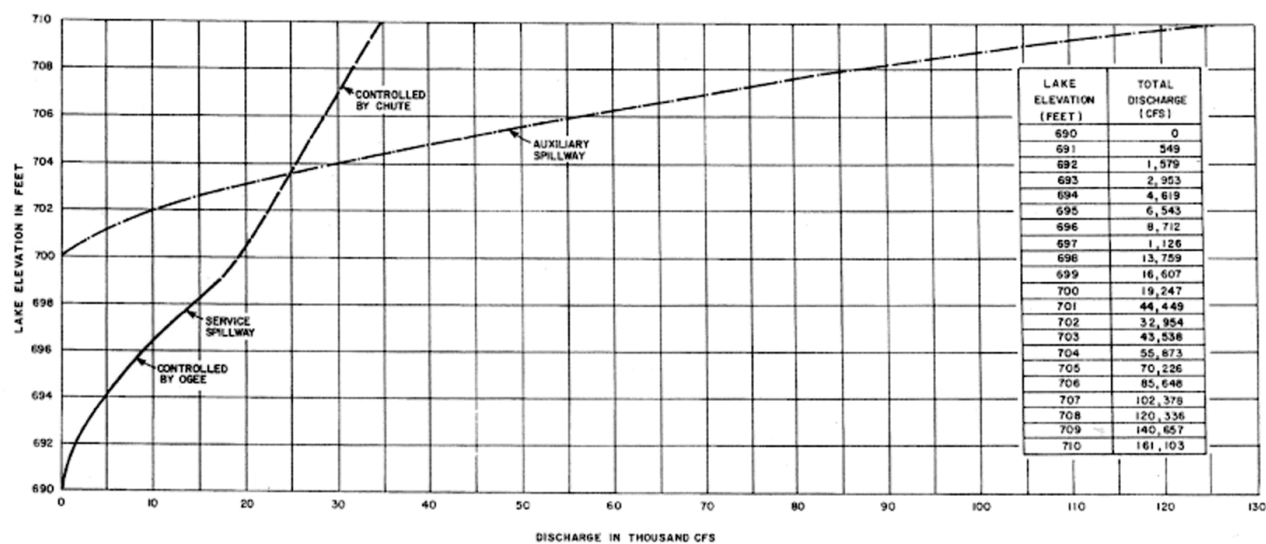
Data Source  
CPS, 2002



N  
Not to Scale

**Figure 2.4-12**  
**Spillway Rating Curves**

Legend

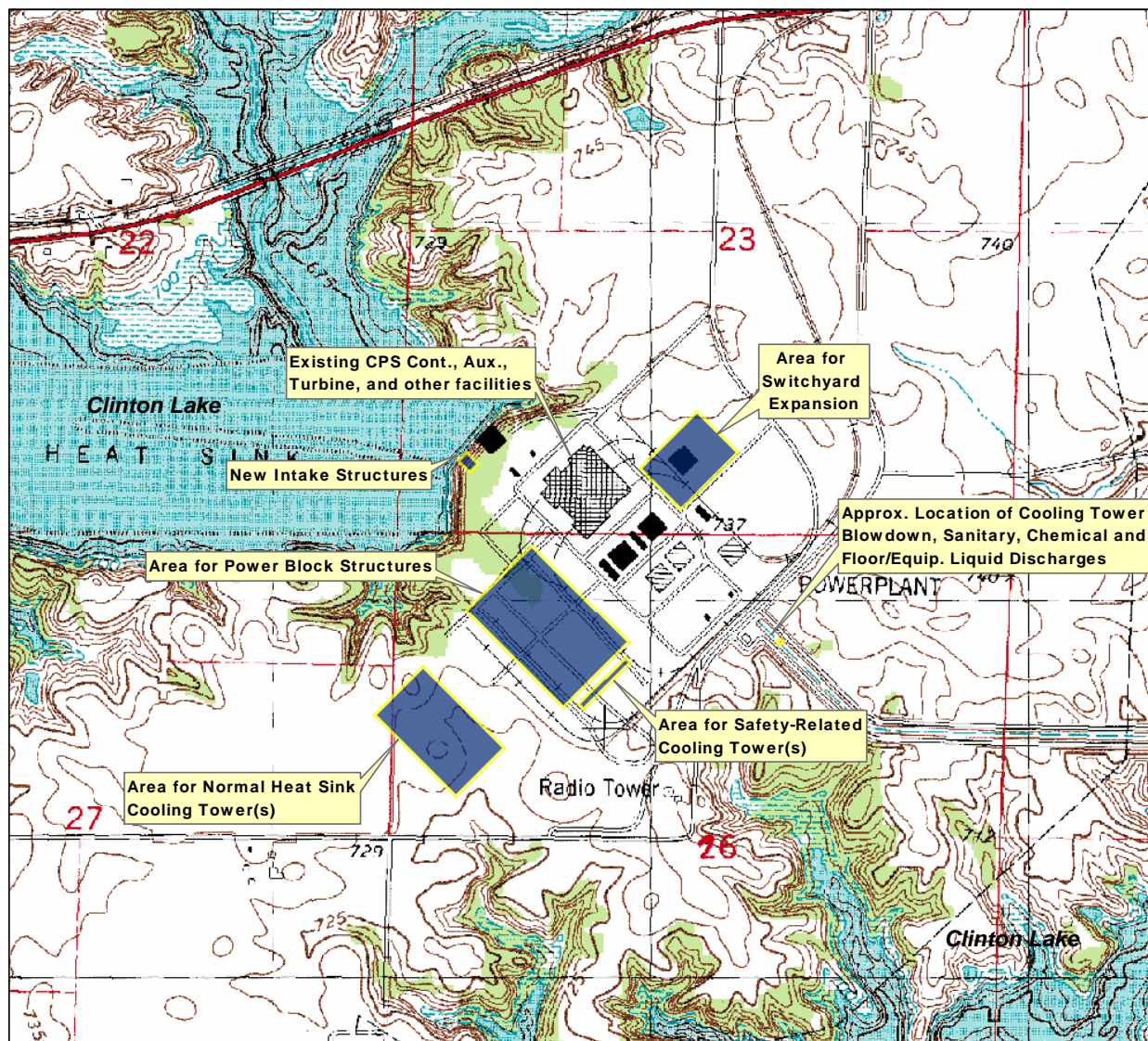


Data Source  
CPS, 2002

Not to Scale



**Figure 2.4-13**  
**Proposed Areas for**  
**EGC ESP Structures**



**Legend**

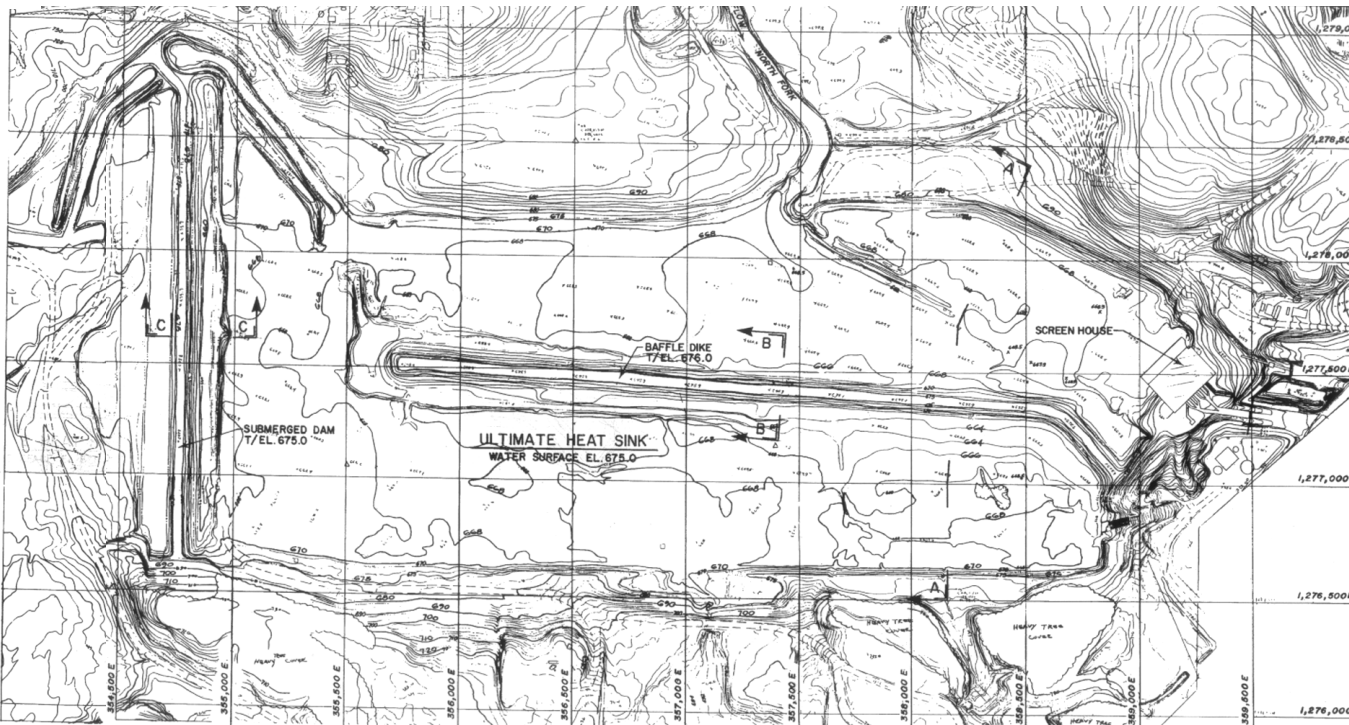
■ Proposed Areas for EGC ESP Facility Structures

Data Sources:  
USGS, 1979



**Figure 2.4-14**  
**CPS Ultimate Heat Sink Plan**

**Legend**



**NOTES:**

1. Topographic map of ultimate heat sink after construction (Oct. 17, 1977).
2. Refer to Figure 2.4-15 for sections.

Data Source:  
CPS, 2002

Not to Scale



**Figure 2.4-15**  
**CPS Ultimate Heat Sink Sections**

**Legend**

**NOTES:**  
1. Refer to Figure 2.4-14 for sections.

Data Source:  
CPS, 2002

Not to Scale

