

---

# Planning Related to SCE&G Combined License Application

NRC Meeting  
December 6, 2005

---

# SCANA / SCE&G Team Members

- Steve Byrne SCE&G Chief Nuclear Officer
- Kevin Marsh SCANA Chief Financial Officer
- Robin White Santee Cooper Nuclear Coordinator
- Ron Clary Project General Manager
- Al Paglia Project Supervisor, Engr. & Licensing
- Amy Monroe Project Licensing Engineer
- Robert Justice VCS Shift Engineer

---

# Meeting Objectives

- Discuss SCE&G plans for Combined License (COL) application
- Provide status of reactor technology selection
- Provide status of site selection
- Discuss pre-application interactions

---

# Business Case

- Additional base load capacity needed in our service territories by 2015
- Generation evaluations indicates nuclear option is positive
  - Financial
  - Environmental

## Reactor Technology Evaluation

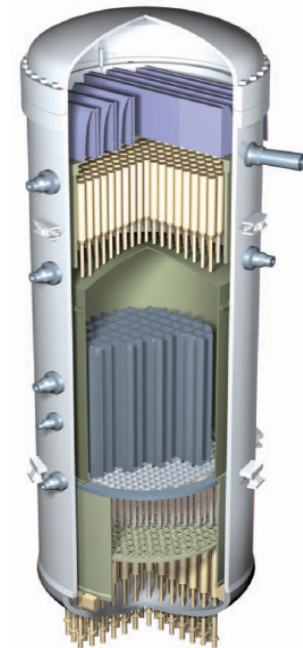
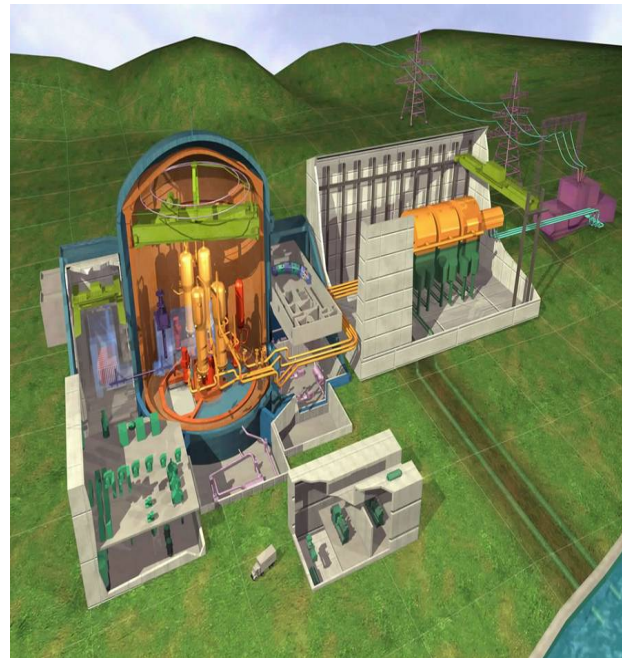
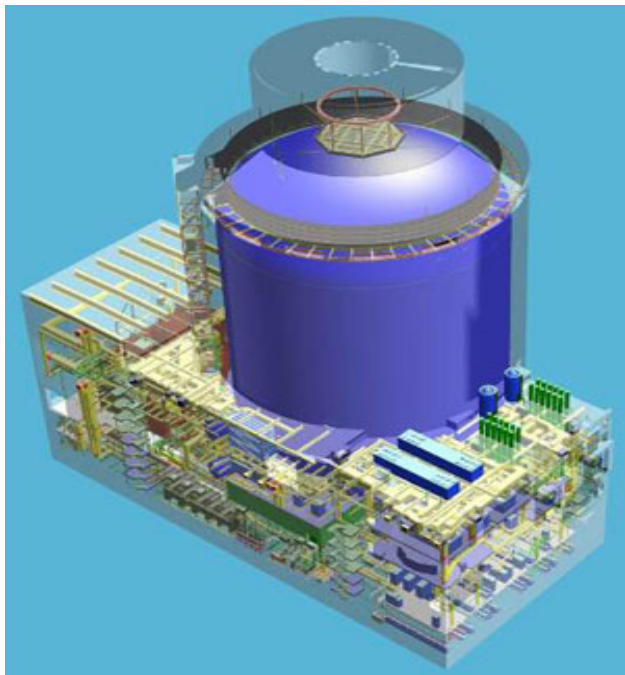
RFP sent to Westinghouse / Areva / GE

SCE&G currently evaluating

Westinghouse AP1000

Areva EPR

GE ESBWR & ABWR



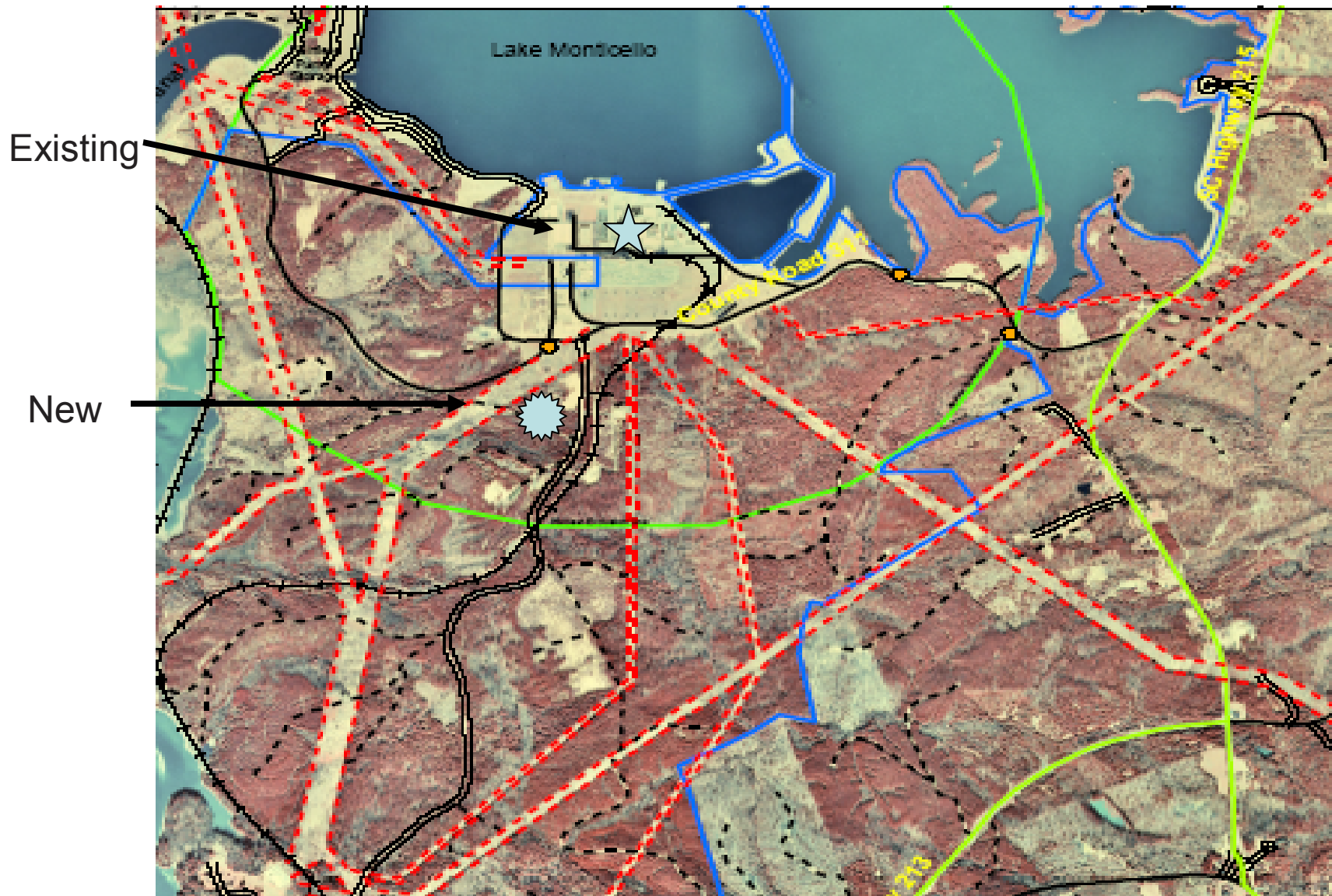
# Reactor Technology Evaluation

- Factors in our evaluation include:
  - Size of plants
    - Footprint
    - Electrical output
  - Design Certification status
  - Ability to meet generation need date
  - Passive versus active designs
  - PWR versus BWR decision
  - Cost

# Reactor Technology Decision

- Expect to make decision by end of 2005 or early 2006
- Would allow proceeding with
  - Development of COL Application
  - Commencing engineering work and long lead procurement planning

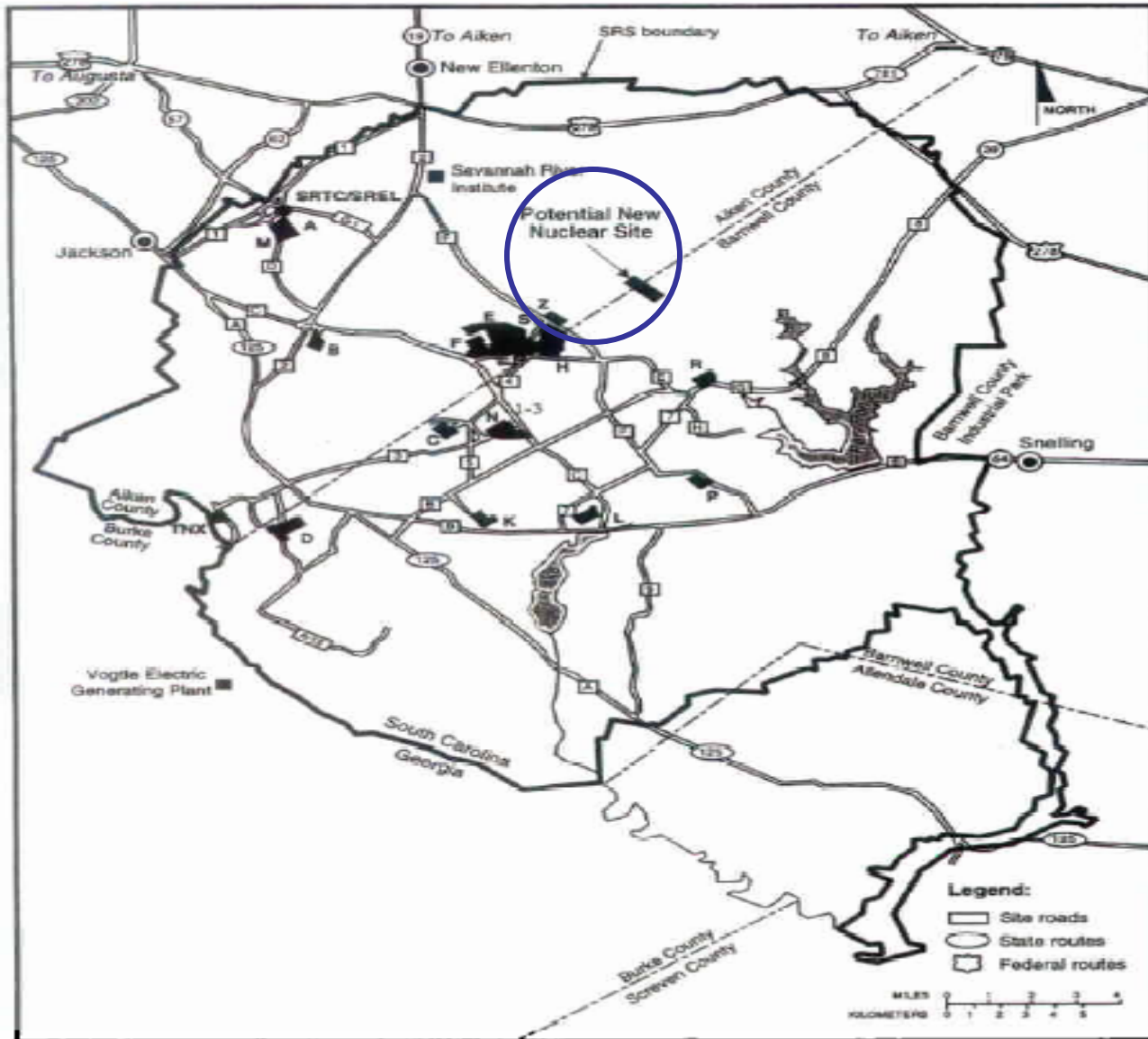
# VC Summer Nuclear Station Potential Site Location





# SRS - Potential Site Location

Figure 1-6. Potential New Nuclear Station Site at SRS



# Plans for New Generation

- SCE&G plans on submitting a COL for two units to meet base load needs
  - Unit 1 operational in 2015
  - Unit 2 operation date TBD
- SCE&G would be licensee

# Plans for COL Application

## Current status

- Evaluation of contracting services for COL preparation in progress
- Expect COL contractor to be selected by the end of 2005 or early 2006
- COL application targeted to be submitted to the NRC as early as third quarter of 2007 but consistent with our technology selection

---

# Industry Participation

- SCE&G has membership on NEI Task Forces
- SCE&G evaluating NuStart membership
- SCE&G is a member of the newly formed NPOC

---

# COL Application Preparation and Review Focus

- High quality COL application consistent with regulatory guidance
- Work with Staff and other utilities to develop protocols for high level of interaction to assure a quality and sufficient application leading to a efficient review
- Early interaction with State to develop plans for technical interaction and obtaining needed permits

---

# COL Application Preparation and Review Focus (con't)

- Collaboration with utilities choosing same technology to leverage common elements
- Work with the Staff and other utilities to structure the most efficient application for review

---

# Pre-application Interactions with the NRC

- Anticipate site characterization work to begin in the first quarter 2006
- Planning for interactions as specified in IMC 2502

# South Carolina environment

- 7 operating reactors
- SRS
- Fuels plant
- Navy reactors
- Barnwell LLRW site
- Gov Nuclear Council
- Delegation supportive
- Governor supportive
- SC ORS briefed



# Summary

- Introduced some key players
- Serious about COL
- Status and timeline of project provided
- SCE&G & Santee Cooper intend to partner
- Will provide update in early 2006 of reactor technology and site selections
- Will have frequent interactions with NRC as the project progresses
- South Carolina positive climate

# Questions