

R3/D-2-52
WFL release
CERN/6/83

Jone - file
ABB/CE

**COMMISSIONER
FORREST J. REMICK**

NRC

**JUNE 18, 1993
HEMATITE, MISSOURI**

W-9

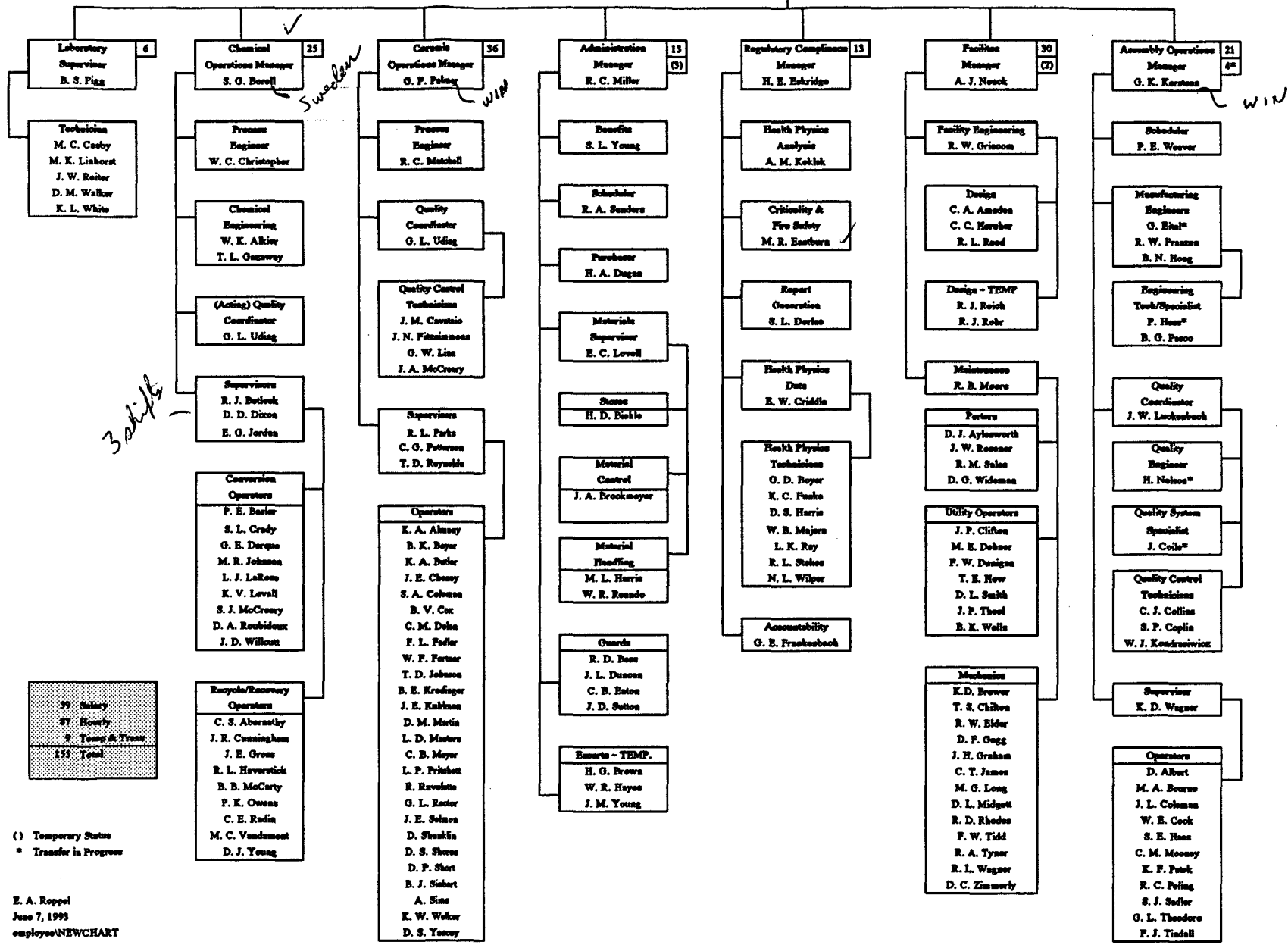
ABB Combustion Engineering Nuclear Power



ABB COMBUSTION ENGINEERING NUCLEAR FUEL NUCLEAR FUEL MANUFACTURING ORGANIZATION CHART HEMATITE, MISSOURI

Plant Manager 148
Hematite (5)
J. A. Rode 4*

Admin. Assistant
E. A. Roppel

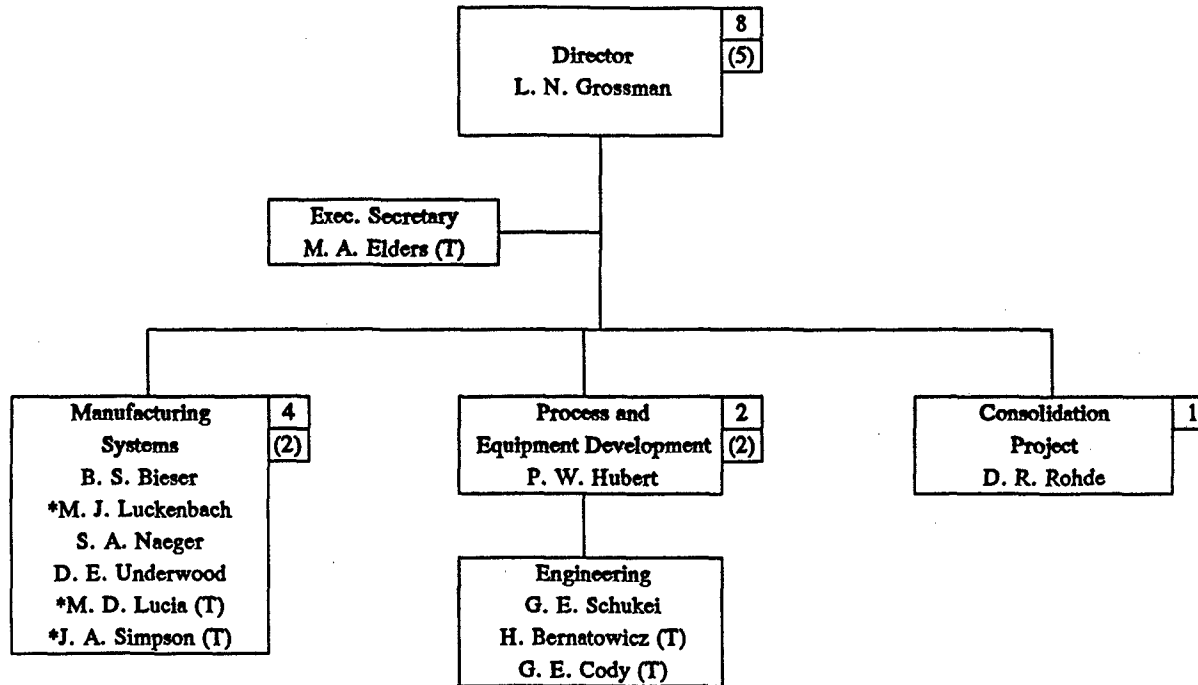


39 Salary
87 Hourly
9 Temp & Trans
155 Total

() Temporary Status
* Transfer in Progress

E. A. Roppel
June 7, 1993
employee/NEWCHART

**ABB COMBUSTION ENGINEERING NUCLEAR FUEL
MANUFACTURING TECHNOLOGY
ORGANIZATION CHART
HEMATITE, MISSOURI**

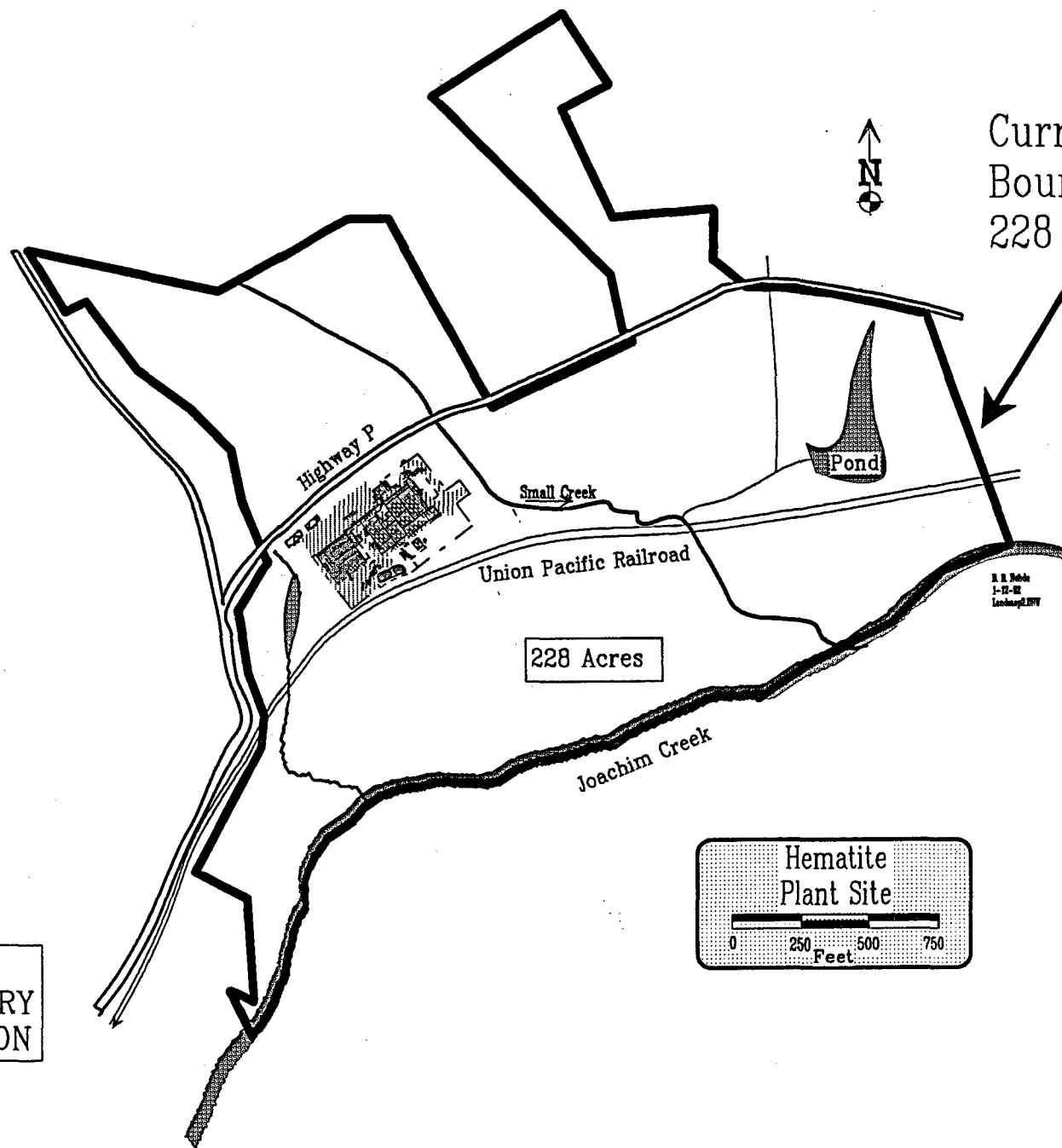


larger projects

8	Salary
5	Temporary
13	Total

(T) = Temporary
* = Located in Windsor, CT

E. A. Roppel
June 7, 1993
employee\5402CHART



Current Site
Boundary
228 Acres

228 Acres



~~ABB
PROPRIETARY
INFORMATION~~



COI

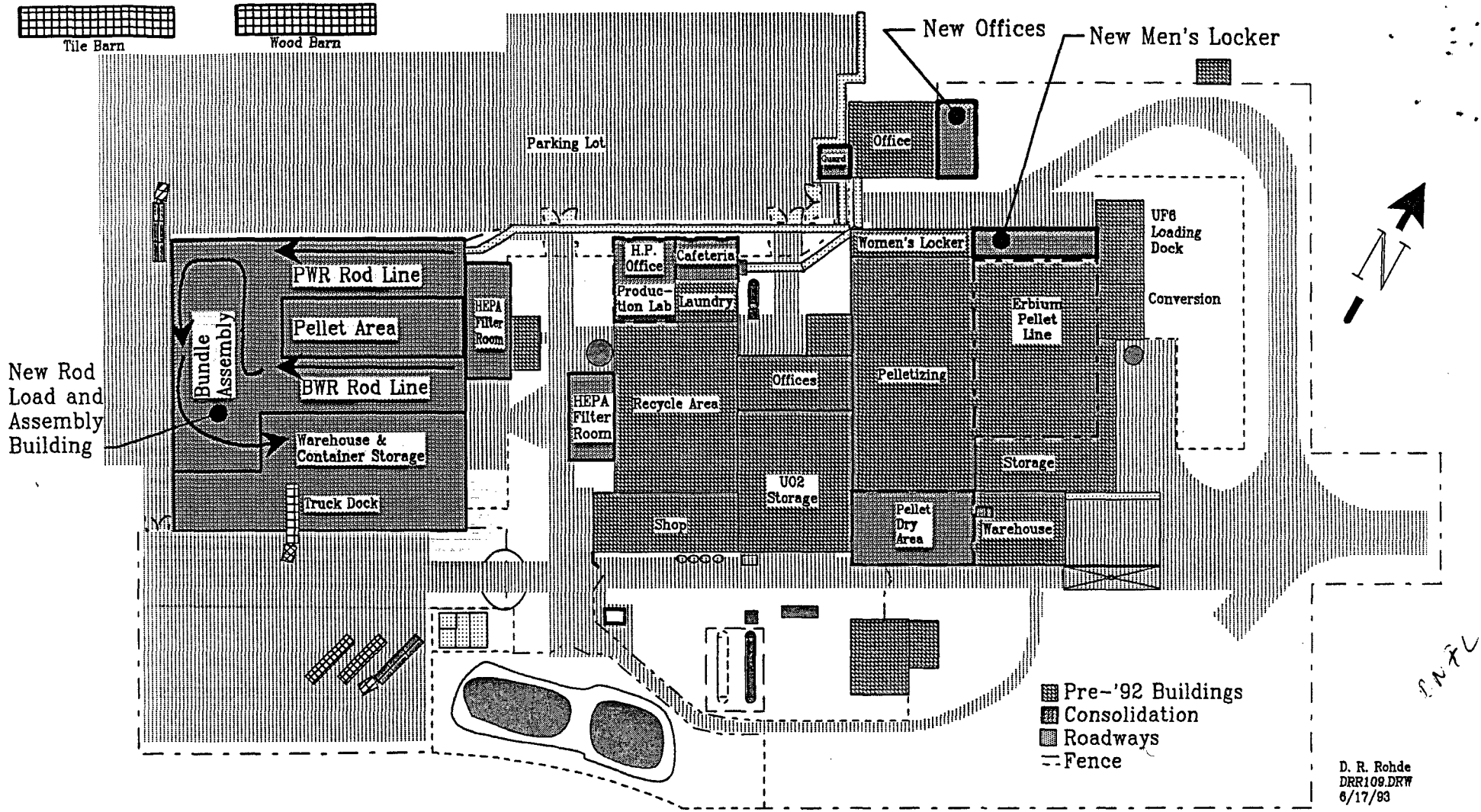
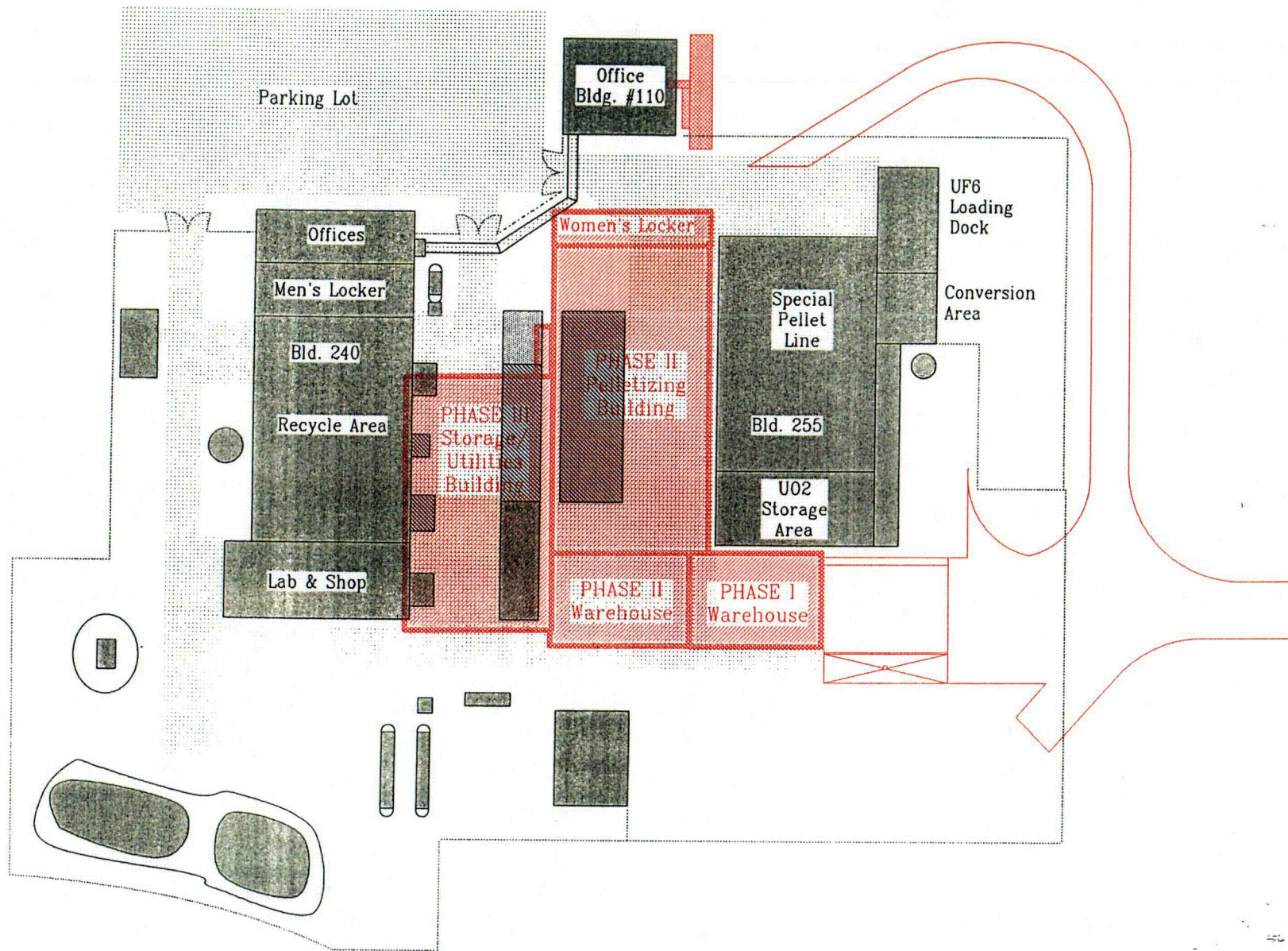


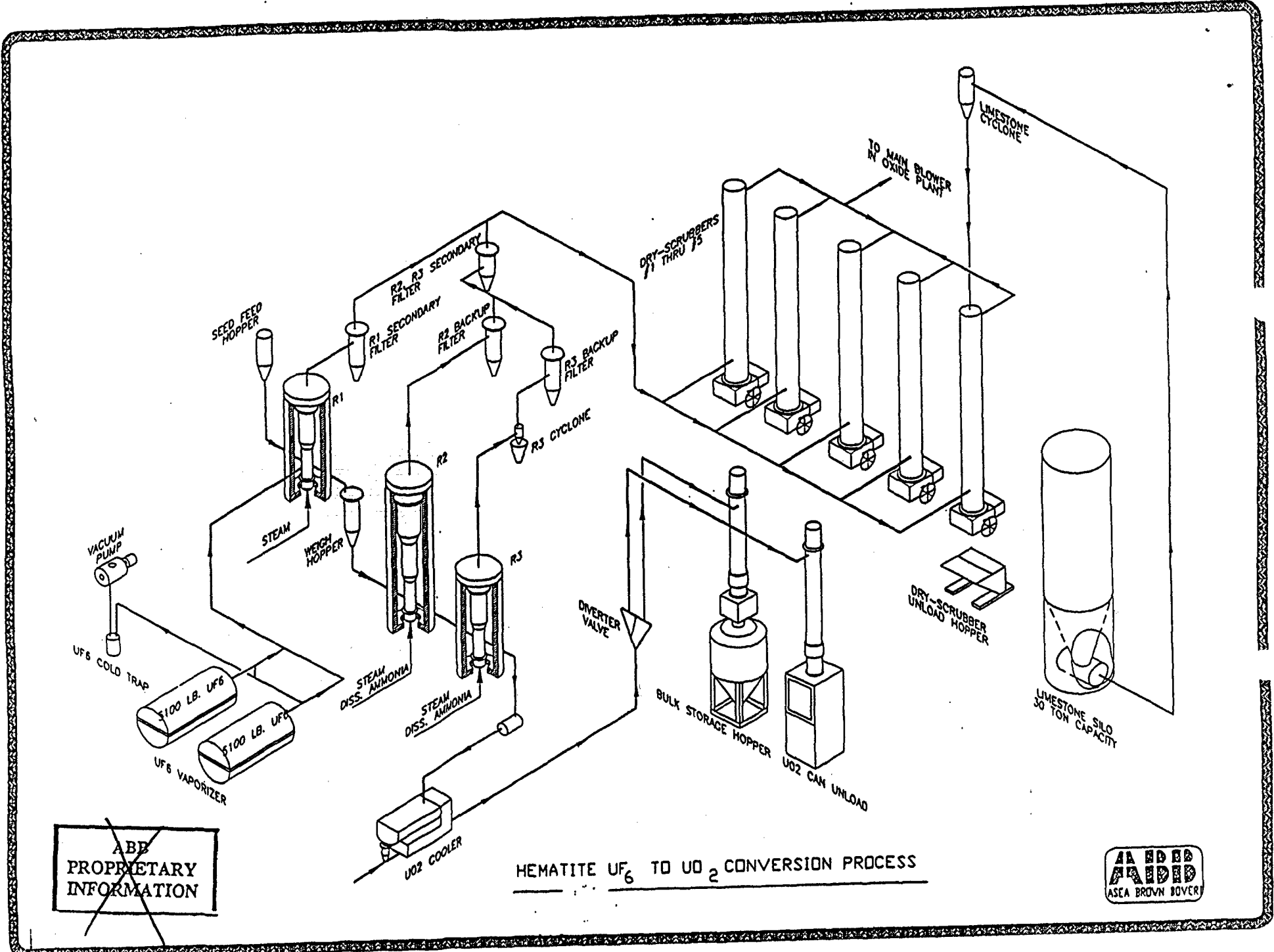
Figure 5. Hematite Site Layout



Hematite Plant Site

- Before Revitalization
- After Revitalization

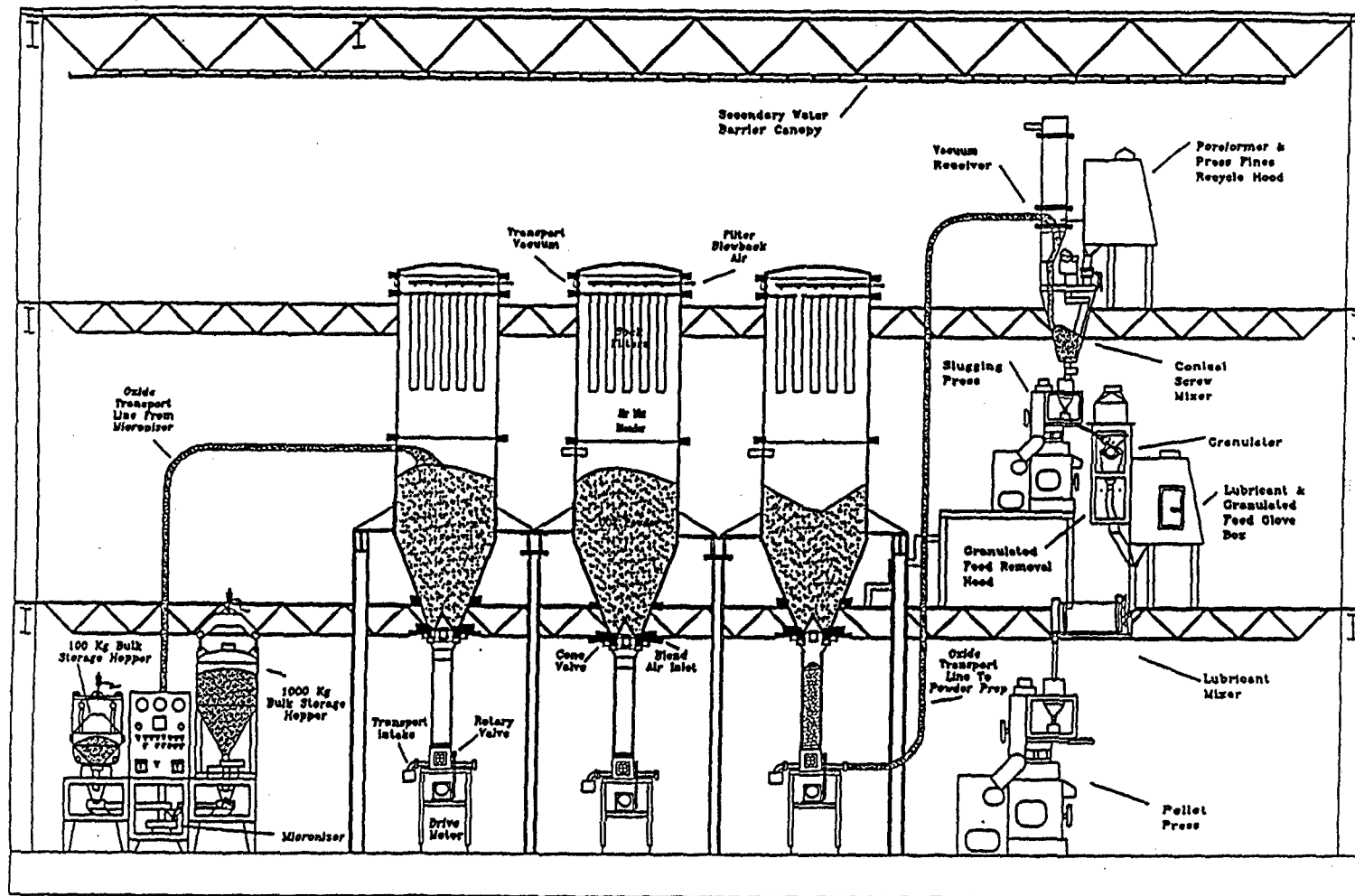
D. R. Rohde
jim2.drw
5/22/91



~~ALL
 PROPRIETARY
 INFORMATION~~

HEMATITE UF_6 TO UO_2 CONVERSION PROCESS

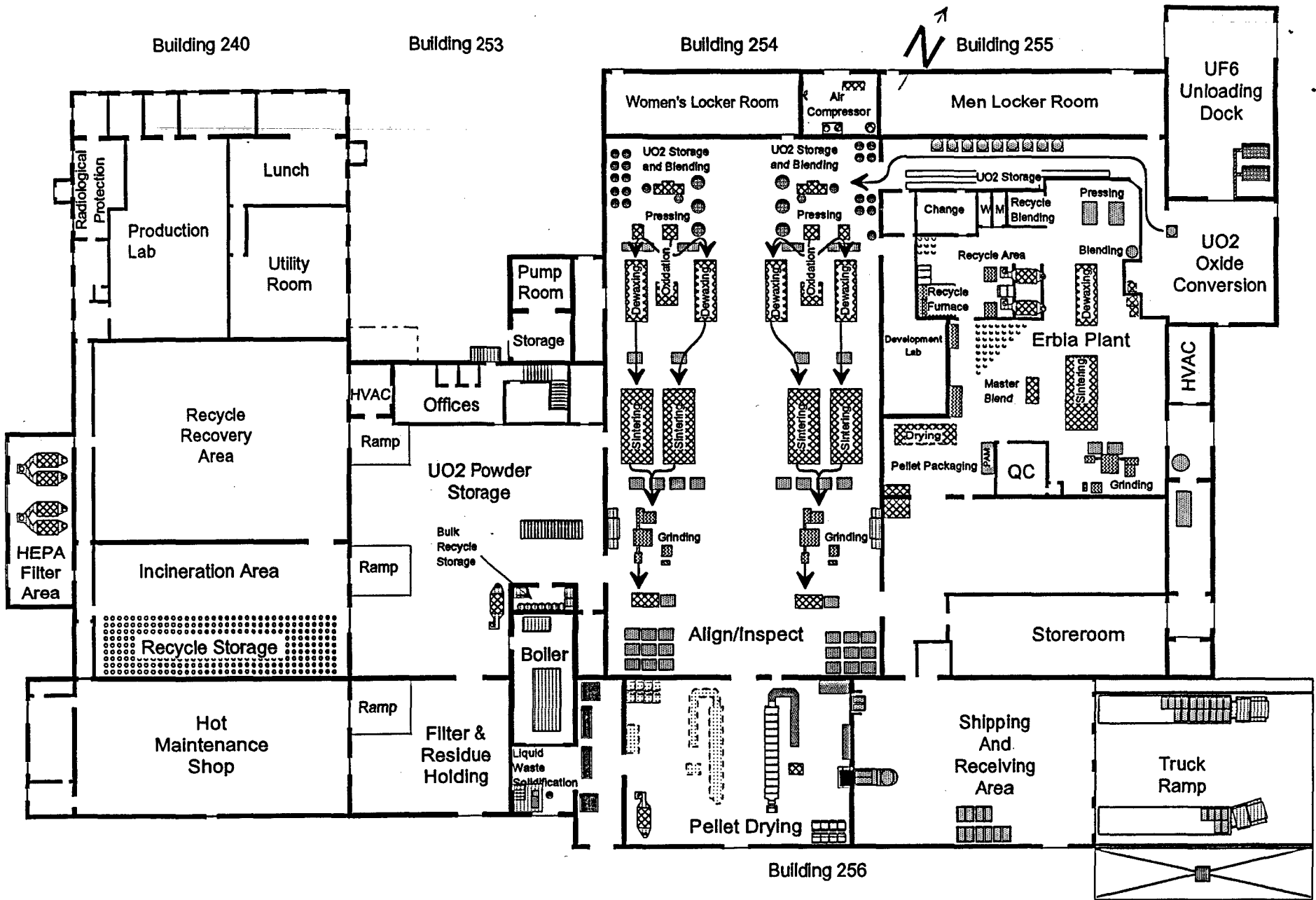




Hematite Micronizing, Blending and Press Feed Preparation

~~ABB
PROPRIETARY
INFORMATION~~

AA EDD
AEDD
ASEA BROWN BOVERI



Hematite Equipment Layout

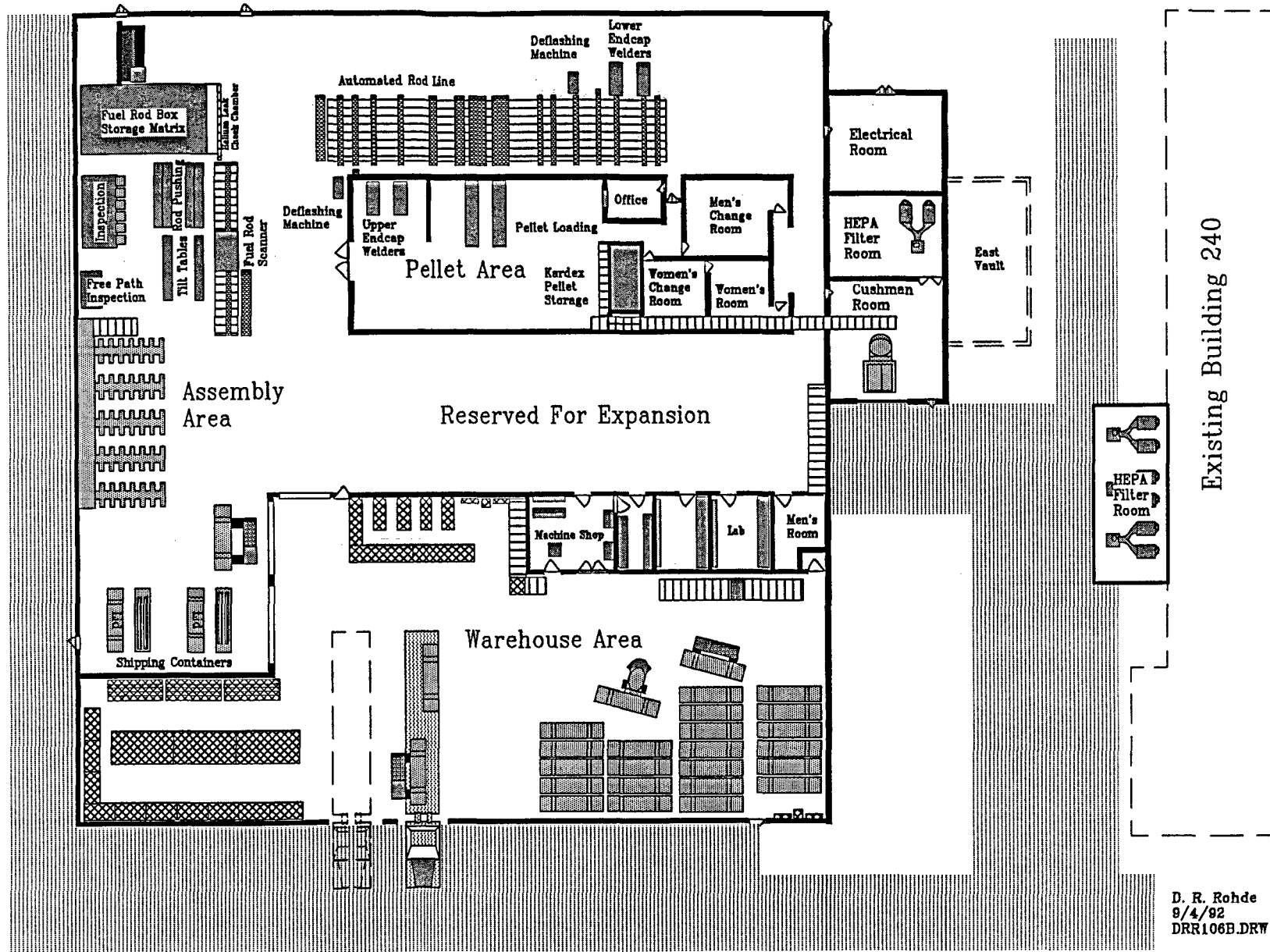


Figure 6. New Rod and Bundle Assembly Layout At Hematite