

## Appendix B1

# ESEM/EDS Data for Test #4 Day-15 Fiberglass in Low-Flow Zones

### List of Figures

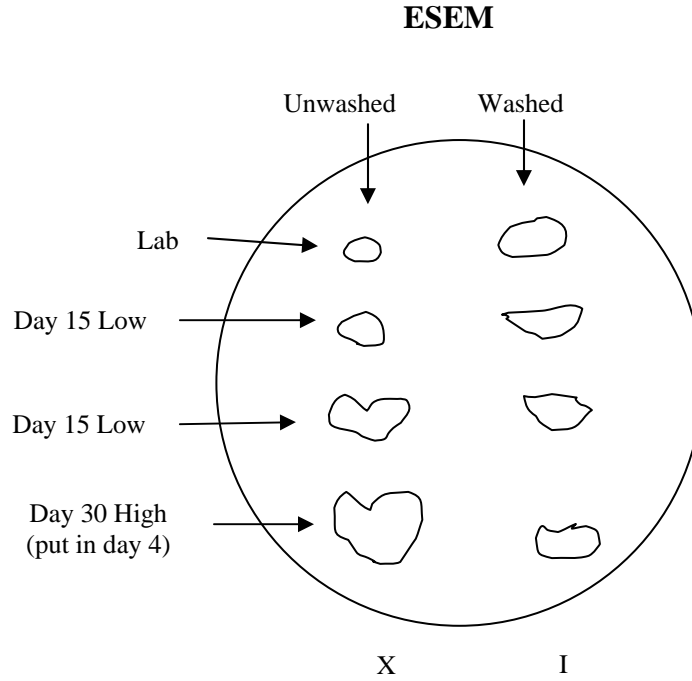
Figure B1-1: Annotated environmental SEM image magnified 100 times for a Test #4 Day-15 exterior low-flow fiberglass sample. (t4d15lx3.jpg).....	B1-4
Figure B1-2: EDS counting spectrum for the particulate deposit on fiberglass shown in Figure B1-1. (t4d15lx2.jpg) .....	B1-4
Figure B1-3: Environmental SEM image magnified 500 times for a Test #4 Day-15 exterior low-flow fiberglass sample. (t4d15lx4.jpg) .....	B1-5
Figure B1-4: Environmental SEM image magnified 1000 times for a Test #4 Day-15 exterior low-flow fiberglass sample. (t4d15lx5.jpg) .....	B1-5
Figure B1-5: Environmental SEM image magnified 100 times for a Test #4 Day-15 interior low-flow fiberglass sample. (t4d15li6.jpg) .....	B1-6
Figure B1-6: Environmental SEM image magnified 500 times for a Test #4 Day-15 interior low-flow fiberglass sample. (t4d15li7.jpg) .....	B1-6
Figure B1-7: Environmental SEM image magnified 1000 times for a Test #4 Day-15 interior low-flow fiberglass sample. (t4d15li8.jpg) .....	B1-7

This appendix shows the ESEM/EDS results on ICET Test #4 Day-15 low-flow zone fiberglass samples. The samples were obtained on June 8, 2005 (15th date for Test #4). Both exterior and interior locations of the fiberglass samples were examined. ESEM/EDS data presented here were obtained on June 23, 2005. The hydrated fiberglass samples without any coating were examined by ESEM under a low vacuum condition (i.e., 80 Pa). EDS results provide a semi-quantitative elemental analysis of the debris attached on fiberglass.

This page is intentionally blank.

**Transcribed Laboratory Log**

Laboratory session from June 23, 2005.  
 Test #4 Day-15 fiberglass in low-flow zones



**ESEM Fiberglass Low-Flow Exterior**

Image:	t4d15lx3	100 ×	ESEM annotated image	Figure B1-1
EDS:	t4d15lx2		EDS image on particles in t4d15lx3	Figure B1-2
Image:	t4d15lx4	500 ×	ESEM image of fiberglass	Figure B1-3
	t4d15lx5	1000 ×	ESEM image at higher magnification	Figure B1-4

**ESEM Fiberglass Low-Flow Interior**

Image:	t4d15li6	100 ×	ESEM image of fiberglass	Figure B1-5
	t4d15li7	500 ×	ESEM image of fiberglass	Figure B1-6
	t4d15li8	1000 ×	ESEM image at higher magnification	Figure B1-7

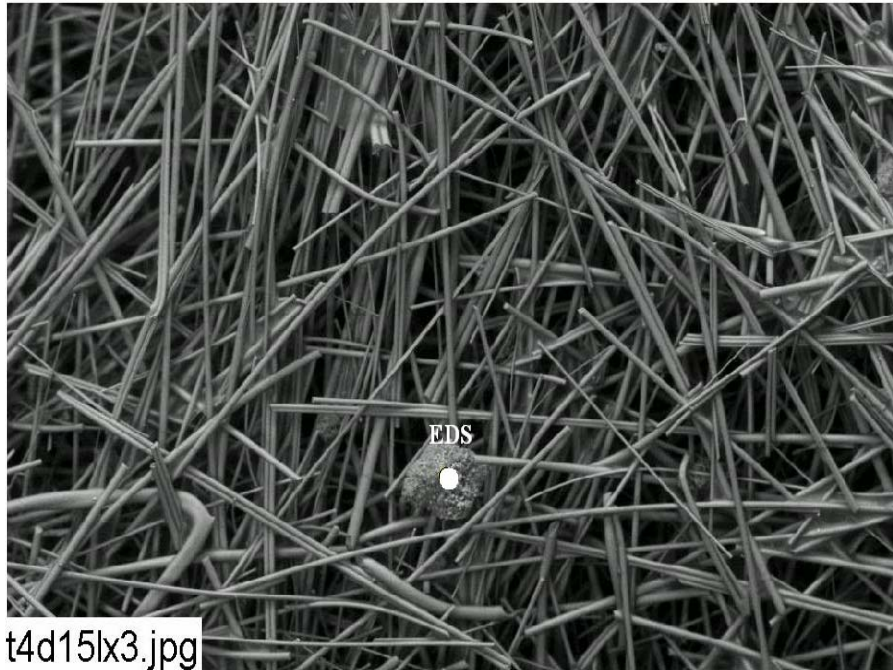


Figure B1-1: Annotated environmental SEM image magnified 100 times for a Test #4 Day-15 exterior low-flow fiberglass sample. (t4d15lx3.jpg)

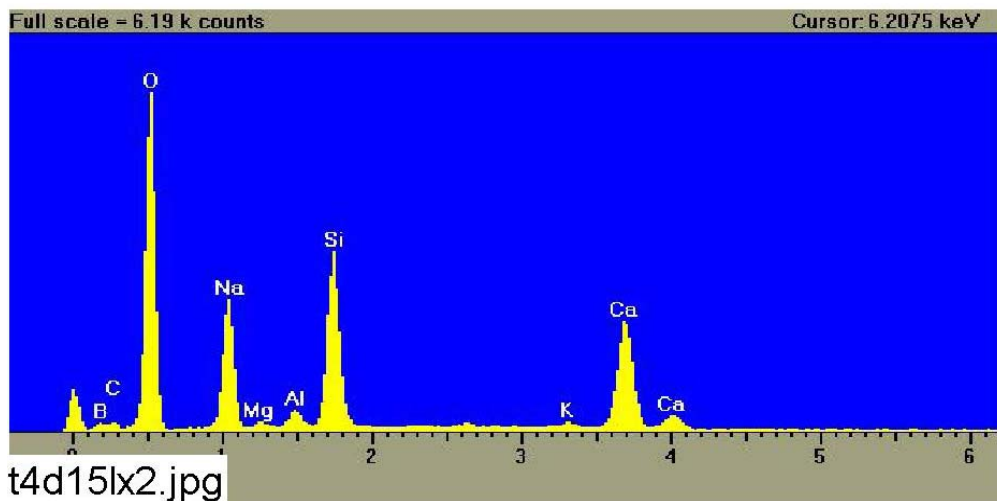
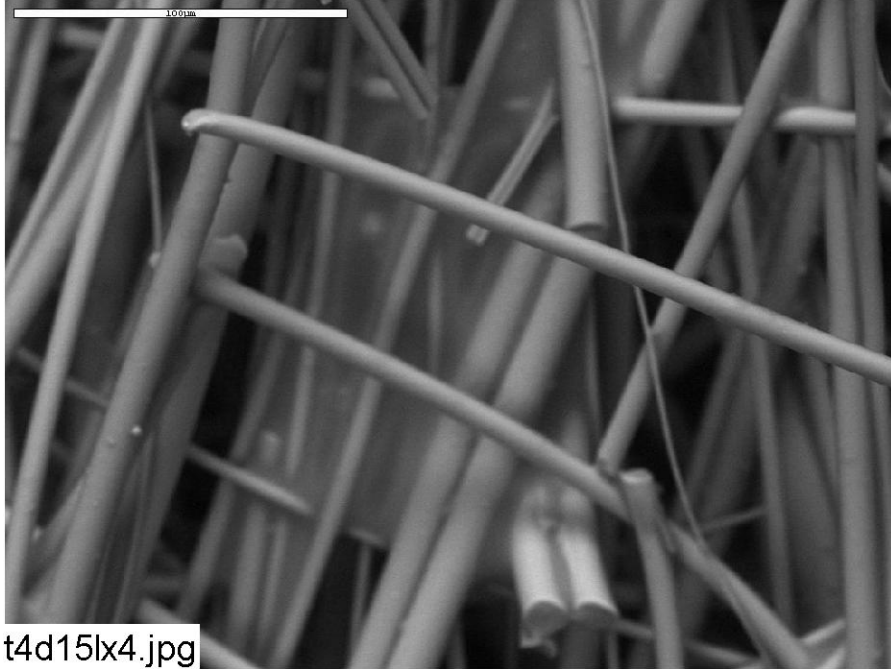
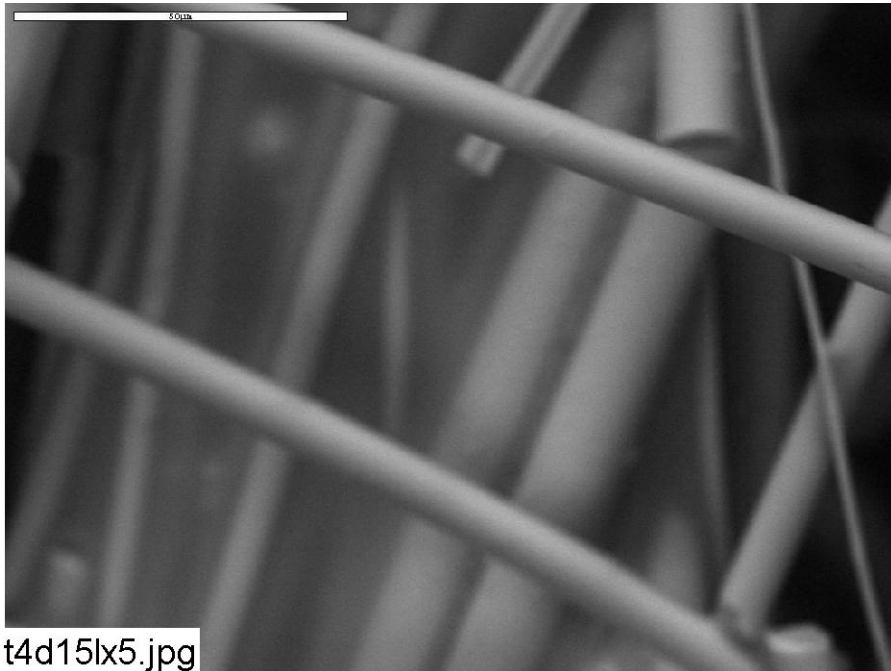


Figure B1-2: EDS counting spectrum for the particulate deposit on fiberglass shown in Figure B1-1. (t4d15lx2.jpg)



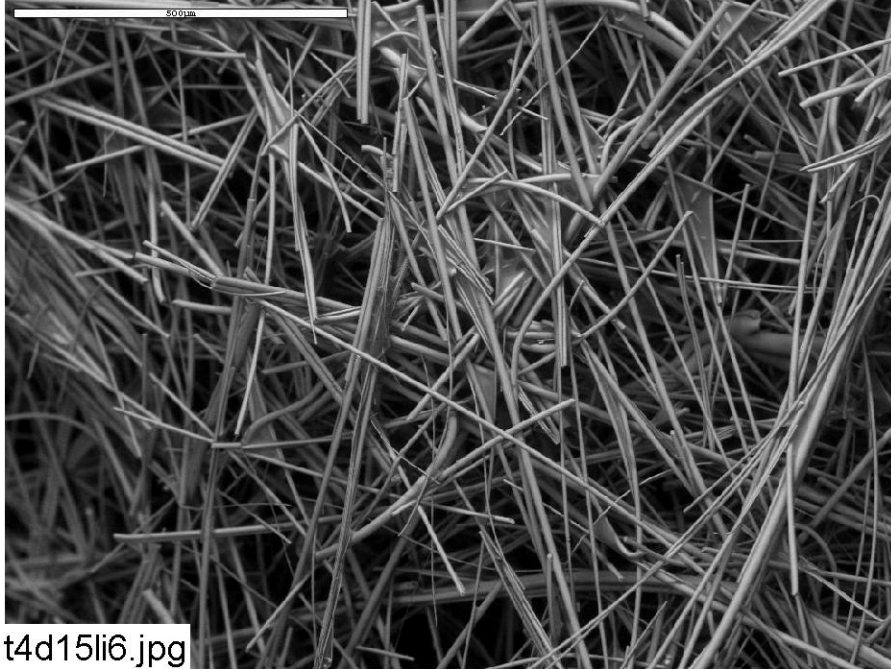
t4d15lx4.jpg

**Figure B1-3: Environmental SEM image magnified 500 times for a Test #4 Day-15 exterior low-flow fiberglass sample. (t4d15lx4.jpg)**

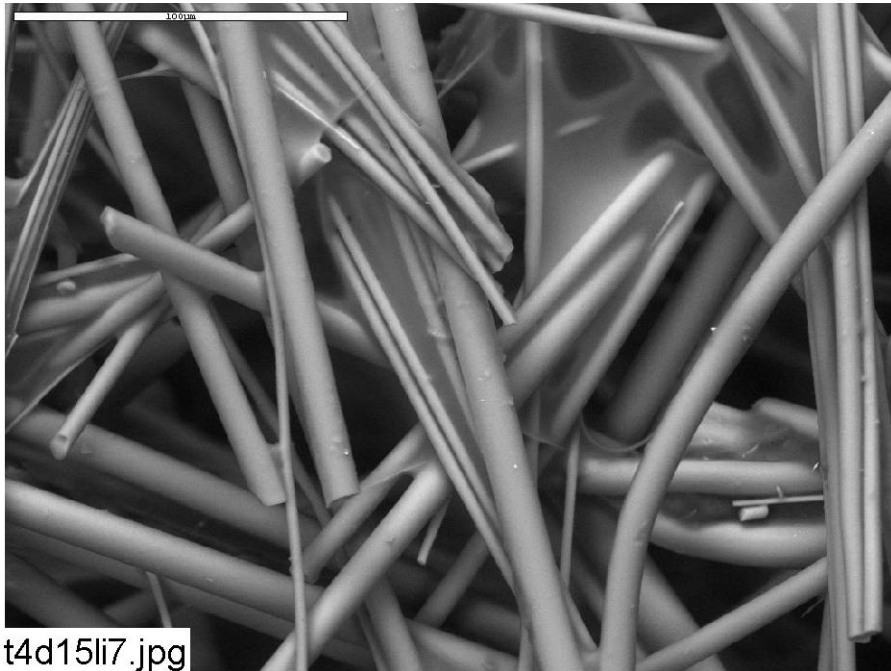


t4d15lx5.jpg

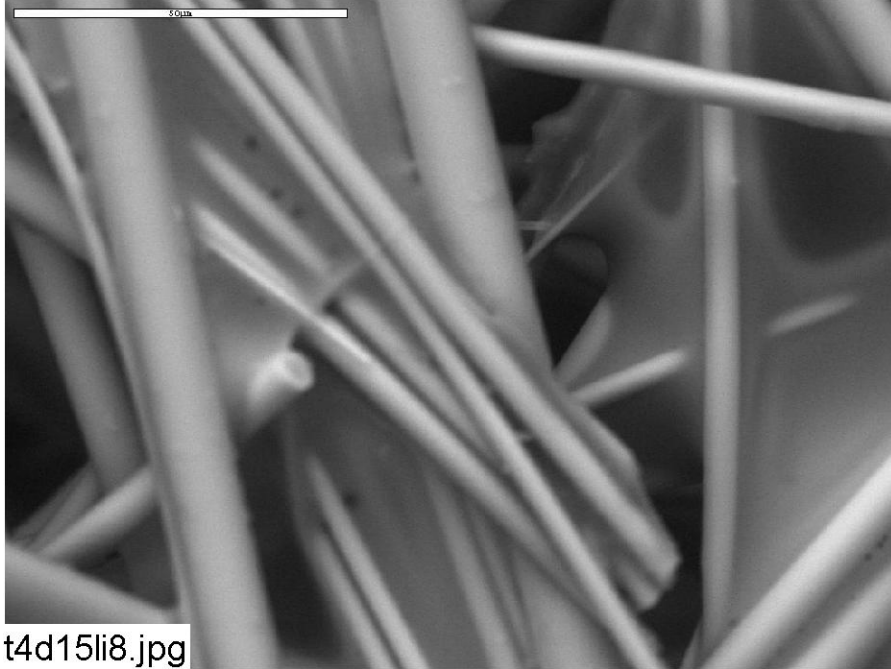
**Figure B1-4: Environmental SEM image magnified 1000 times for a Test #4 Day-15 exterior low-flow fiberglass sample. (t4d15lx5.jpg)**



**Figure B1-5: Environmental SEM image magnified 100 times for a Test #4 Day-15 interior low-flow fiberglass sample. (t4d15li6.jpg)**



**Figure B1-6: Environmental SEM image magnified 500 times for a Test #4 Day-15 interior low-flow fiberglass sample. (t4d15li7.jpg)**



**Figure B1-7: Environmental SEM image magnified 1000 times for a Test #4 Day-15 interior low-flow fiberglass sample. (t4d15li8.jpg)**