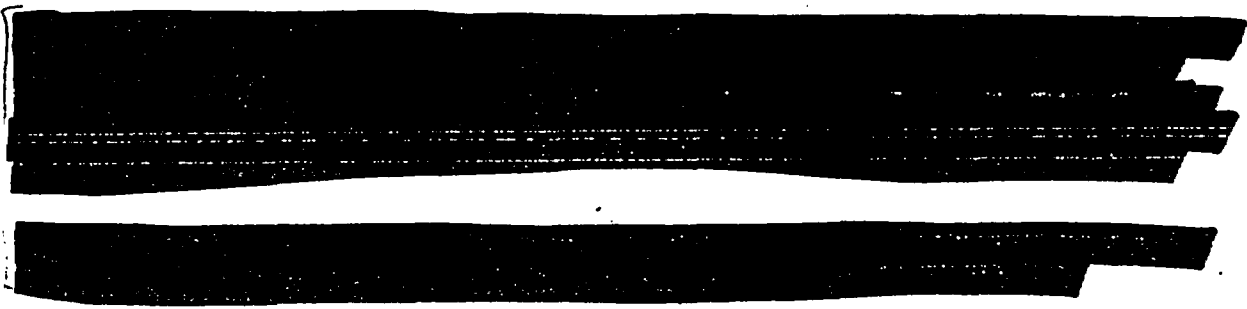


From: John White
To: Rick Ennis
Date: 11/3/05 10:44AM
Subject: Fwd: images for VY SD

↙ 10.CFR 2.390(a)(5)



CC: Anne Passarelli ; Cliff Anderson

Mail Envelope Properties (436A3022.936 : 3 : 26073)

Subject: Fwd: images for VY SD
Creation Date: 11/3/05 10:43AM
From: John White

Created By: JRW1@nrc.gov

Recipients

nrc.gov

kp1_po.KP_DO
AEP CC (Anne Passarelli)
CJA CC (Cliff Anderson)

nrc.gov

owf4_po.OWFN_DO
RXE (Rick Ennis)

Post Office

kp1_po.KP_DO
owf4_po.OWFN_DO

Route

nrc.gov
nrc.gov

Files	Size	Date & Time
MESSAGE	1141	11/03/05 10:43AM
Mail		

Options

Expiration Date: None
Priority: Standard
Reply Requested: No
Return Notification: None

Concealed Subject: No
Security: Standard

From: Anne Passarelli
To: John White
Date: 11/2/05 5:17PM
Subject: Fwd: images for VY SD

10 CFR 2.390(a)(5)



From: Anne Passarelli
To: Brian Holian; Cliff Anderson
Date: 11/2/05 5:13PM
Subject: images for VY SD

See fax diagrams.
Also, attached reports including photos. Open them with WordViewer.
Nothing is public yet.

Anne Passarelli, 610-337-5078
Reactor Inspector
Plant Support Branch 2
Division of Reactor Safety
Region I

CC: Beth Siene; Ed Knutson



**Vermont Yankee RFO-25
In-Vessel Visual Inspection
Indication Notification Form**

Date: 29 Oct 05

INF # 001

Time: 0400

Component:	DVD Number:	DVD Title:
HE-V1 @ 270	Disk 8	2
HA-V4 @ 90	Disk 10	12

Description of Condition:

During the VT-1 examination of HE-V1 @ 270 nine linear indications were observed in the base metal on the left side of the weld. See attached pictures.

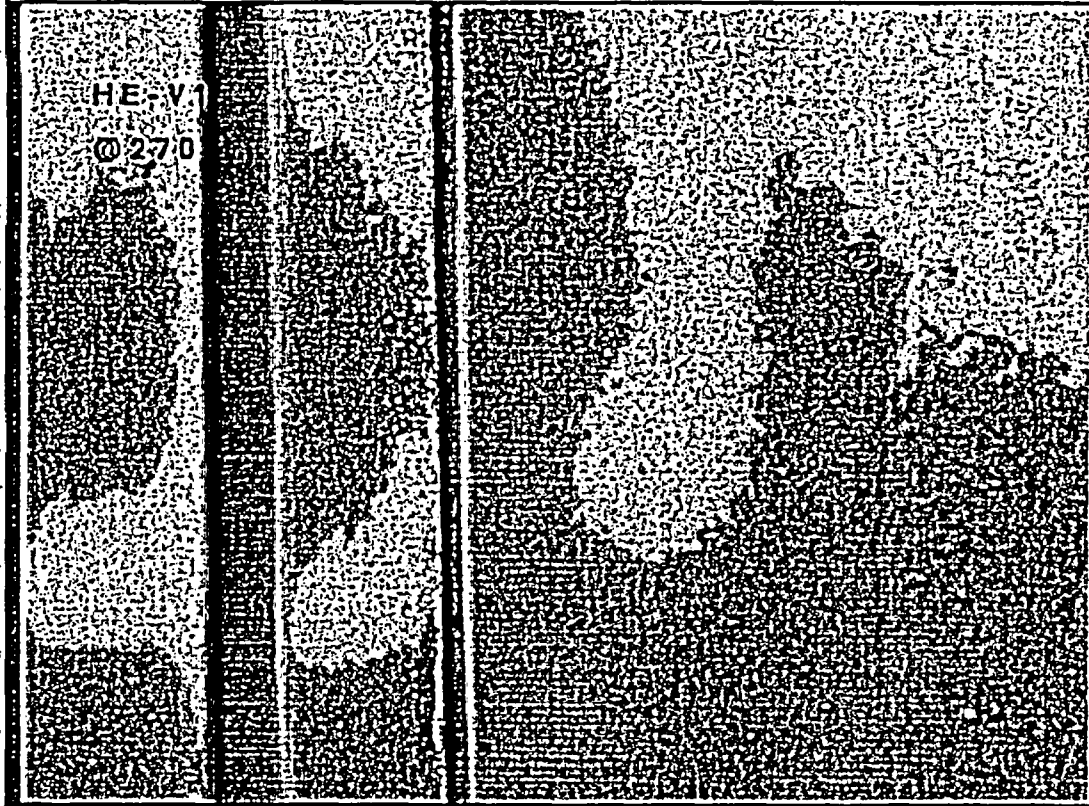
During the VT-1 examination of HA-V4 @ 90 six linear indications were observed in the base metal on the left side of the weld. See attached pictures.

Framatome Level III: _____

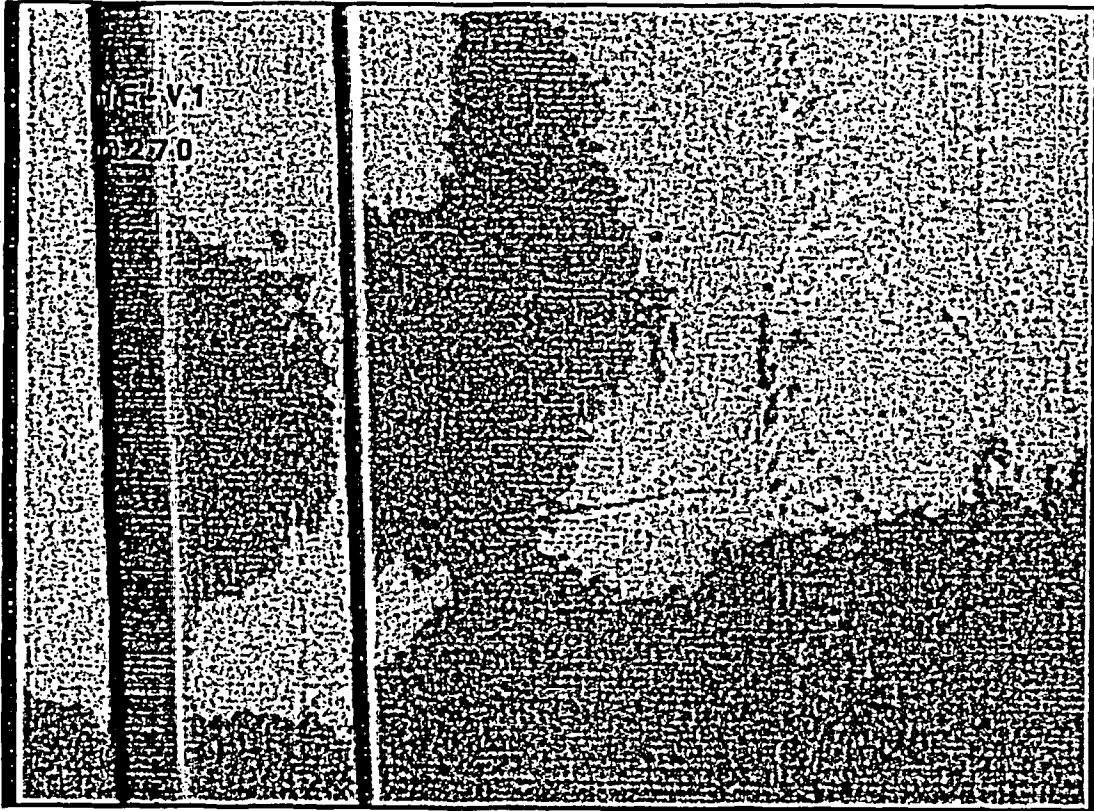
Customer Acknowledgement: _____ Date: _____

(Return Copy to FANP for Records)

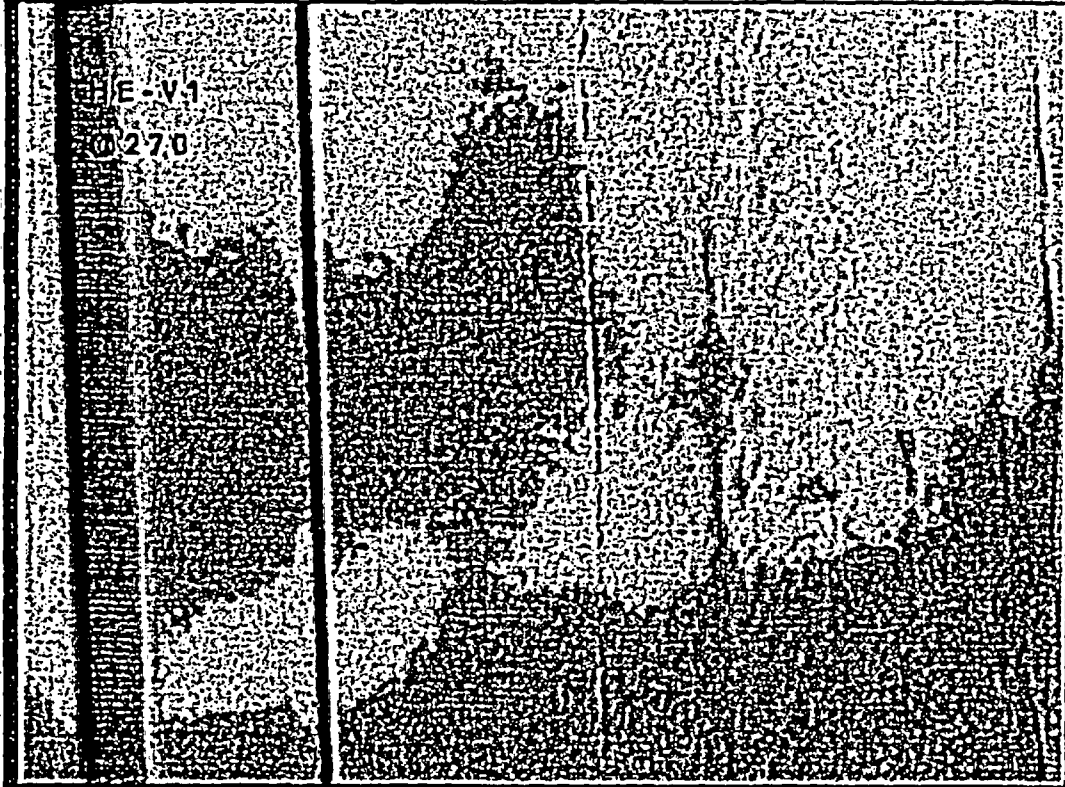
1st indication from the top



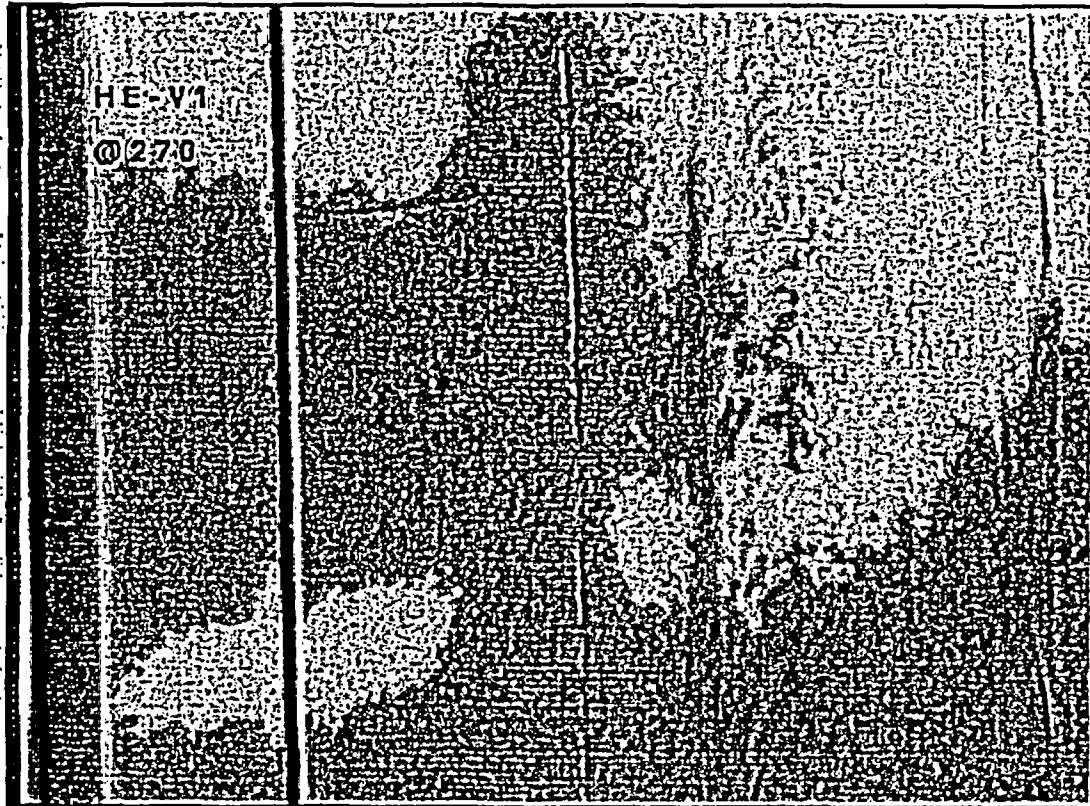
2nd Indication from the top



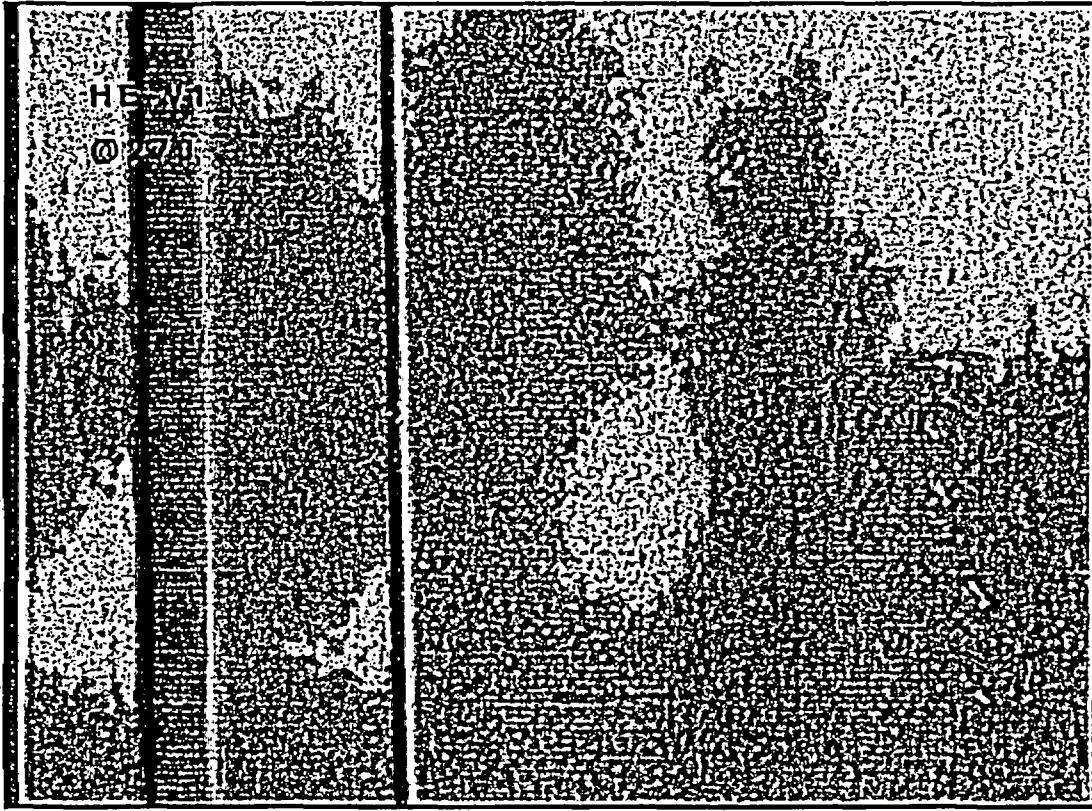
3rd Indication from the top



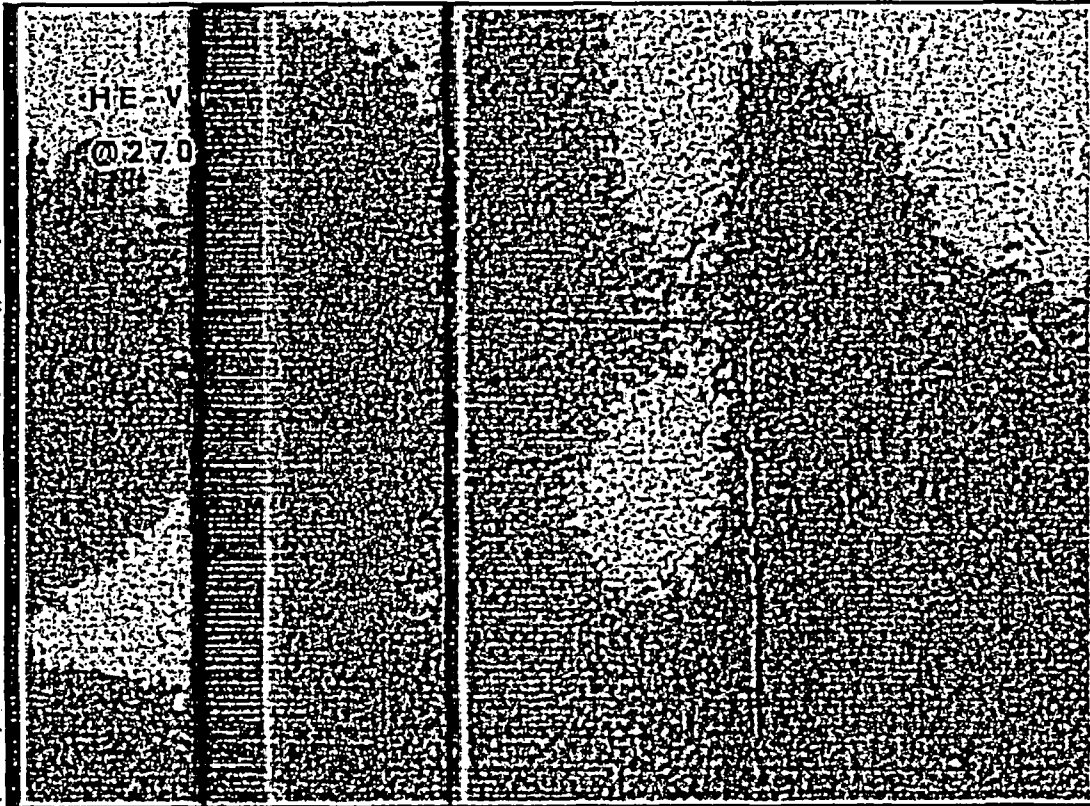
4th Indication from the top



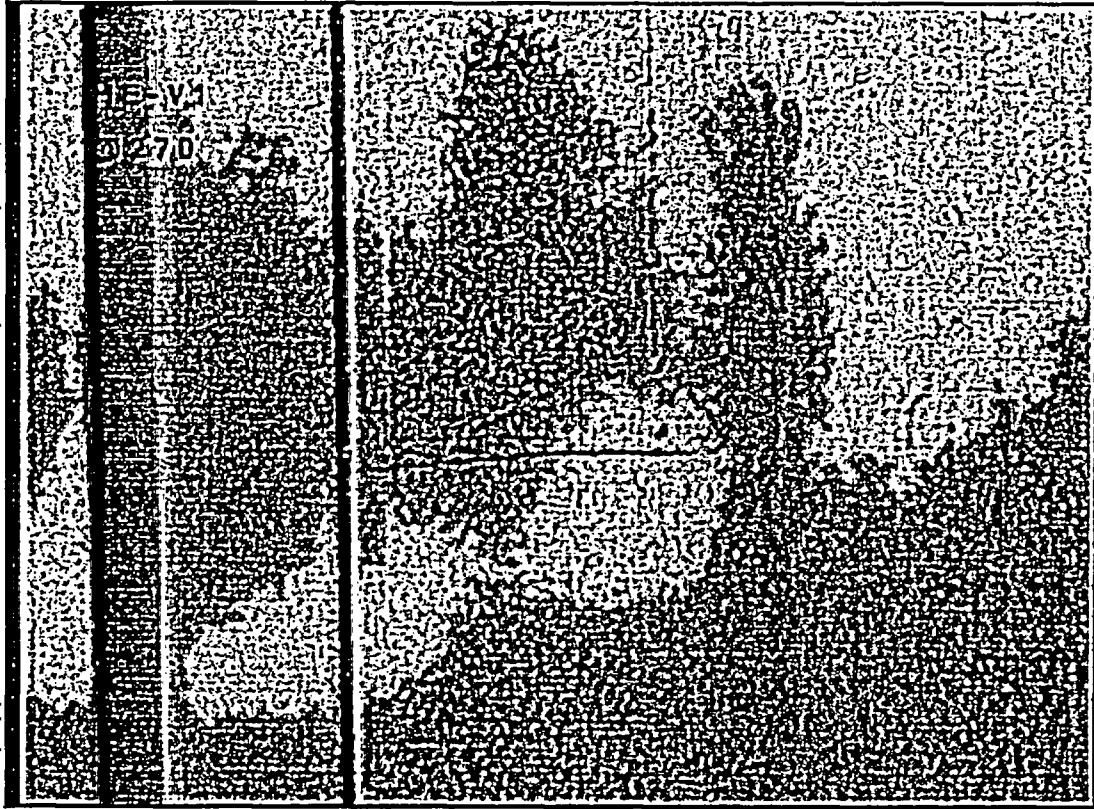
5th and 6th Indication from the top



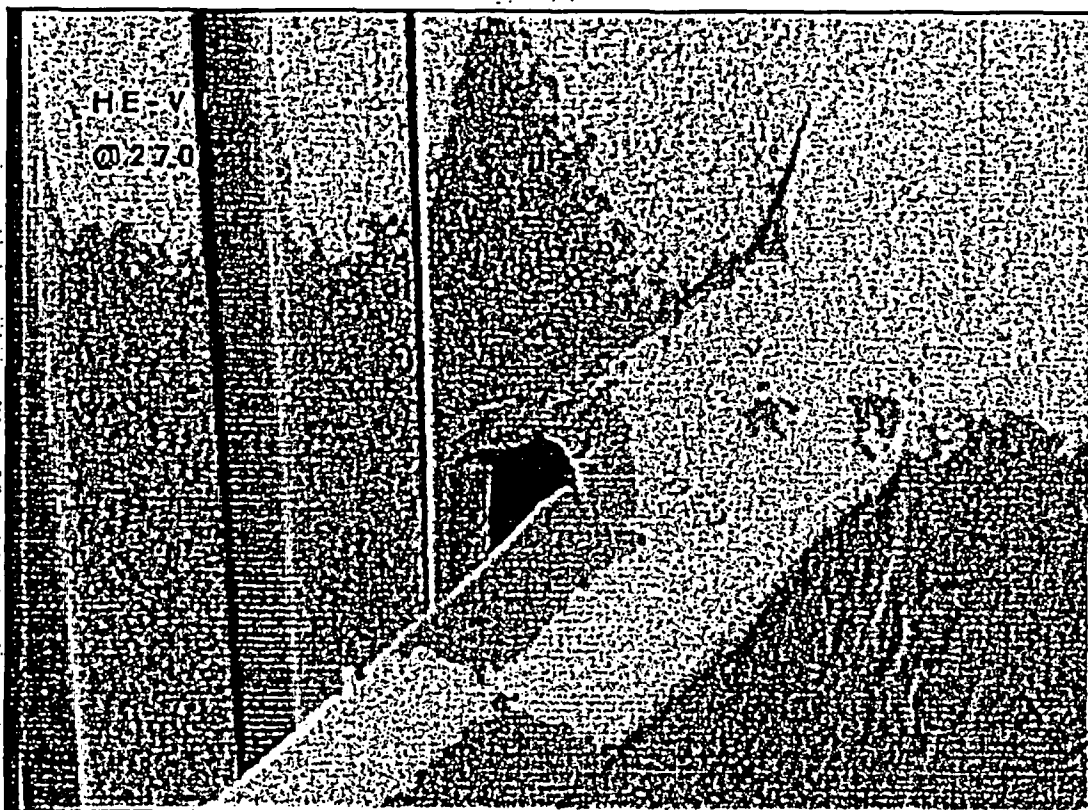
6th and 7th Indication from the top



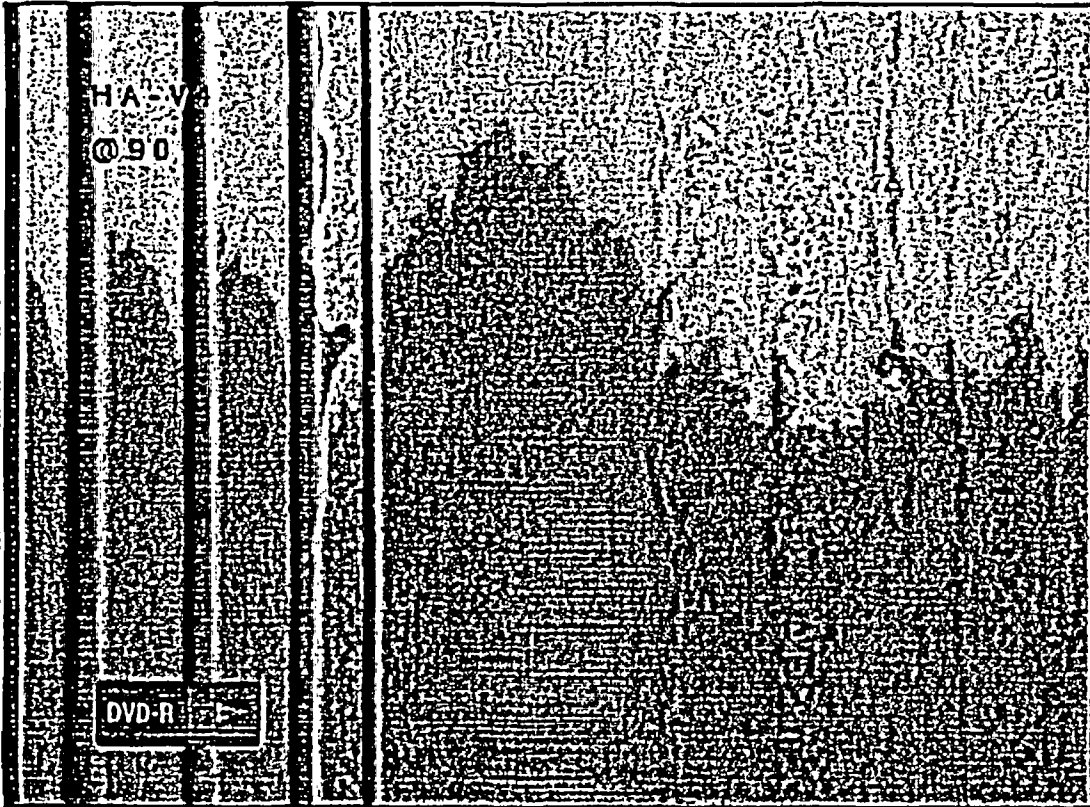
8th Indication from the top



9th Indication from the top



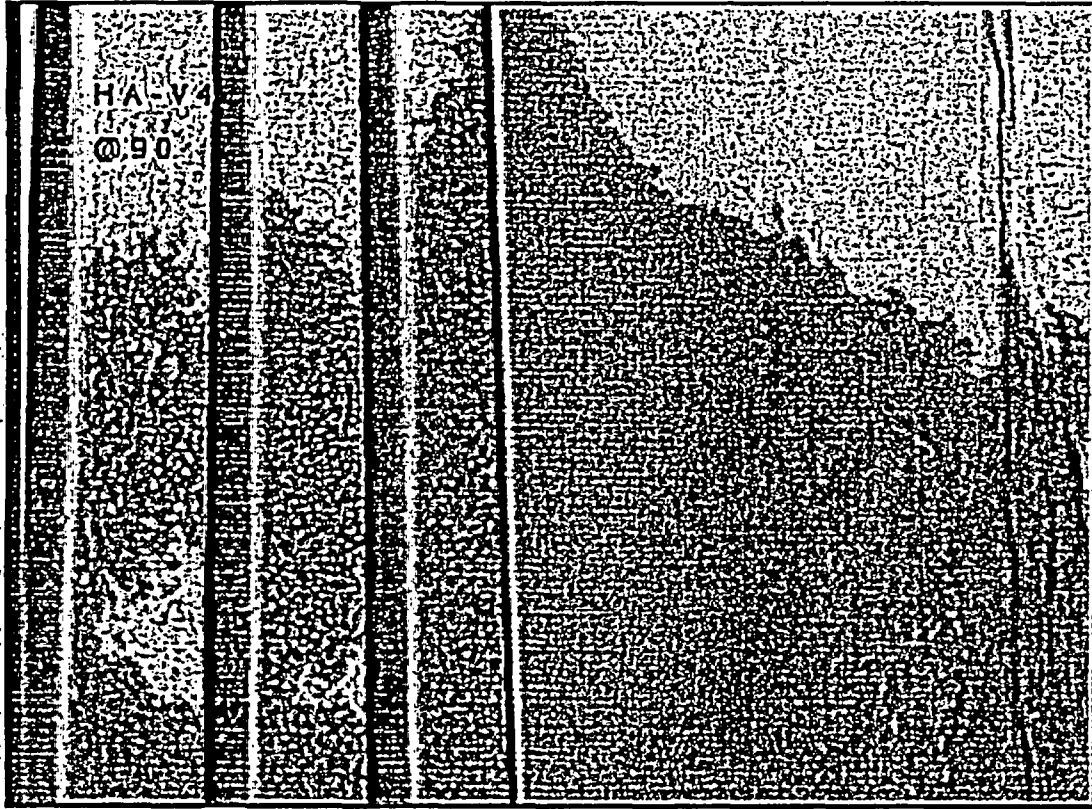
1st Indication from the top



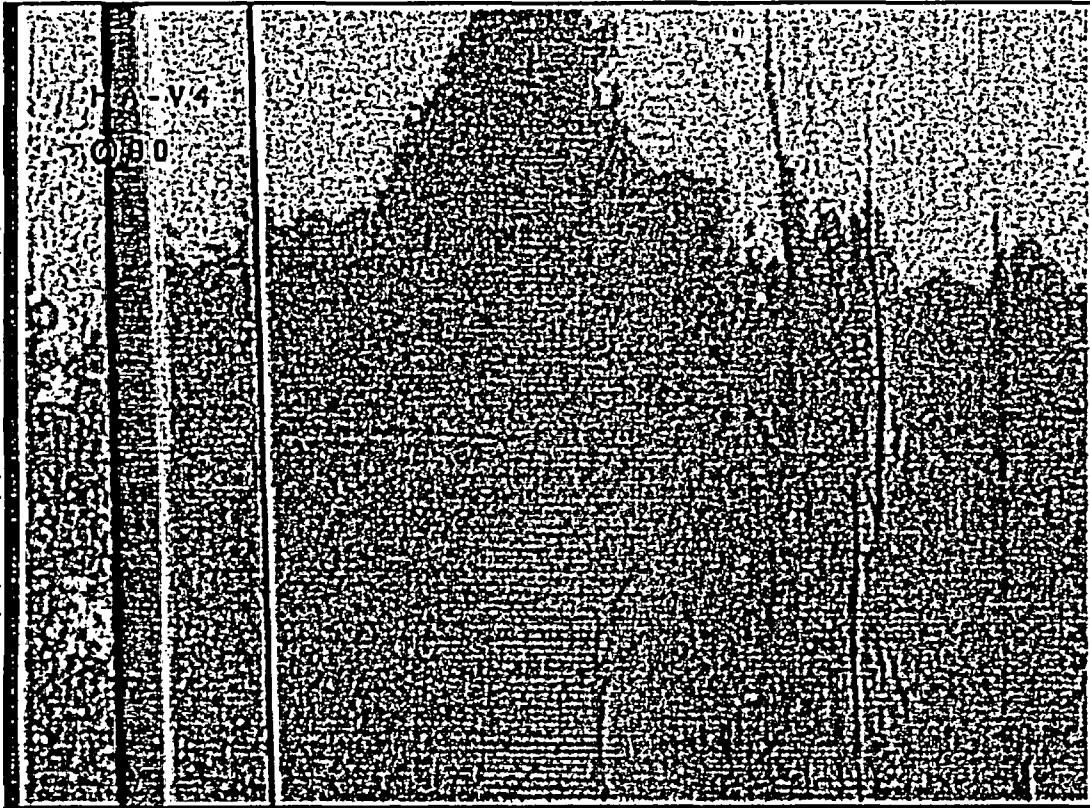
2nd Indication from the top



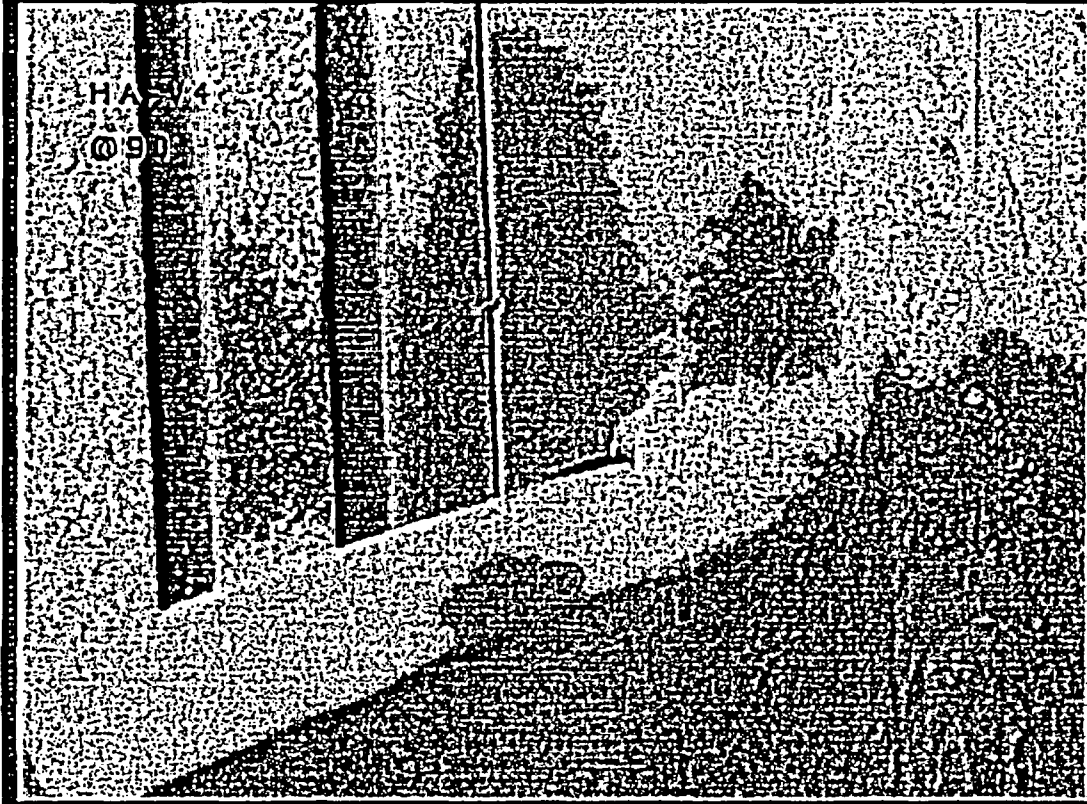
3rd and 4th Indication from the top



5th Indication from the top



6th Indication from the top





**Vermont Yankee RFO-25
In-Vessel Visual Inspection
Indication Notification Form**

Date: 30 Oct 05

INF # 002

Time: 1500

Component:	DVD Number:	DVD Title:
HB-V04	Disk 5	7

Description of Condition:

During the VT-1 examination of HB-V04 ten linear indications were observed in the base metal on the left side of the weld (see attached pictures). RFO 24 data identified 7 indications (ref. INR VYR24-04-02 R2). Review of RFO-24 video revealed 9 of the 10 indications identified in the RFO-25 video. No discernable change was noted in those indications which could be correlated. The one unidentified indication during RFO-24 was due to technique differences and does not have the appearance of being a new indication. It is similar in size and location to the other indications on this component.

Framatome Level III: _____

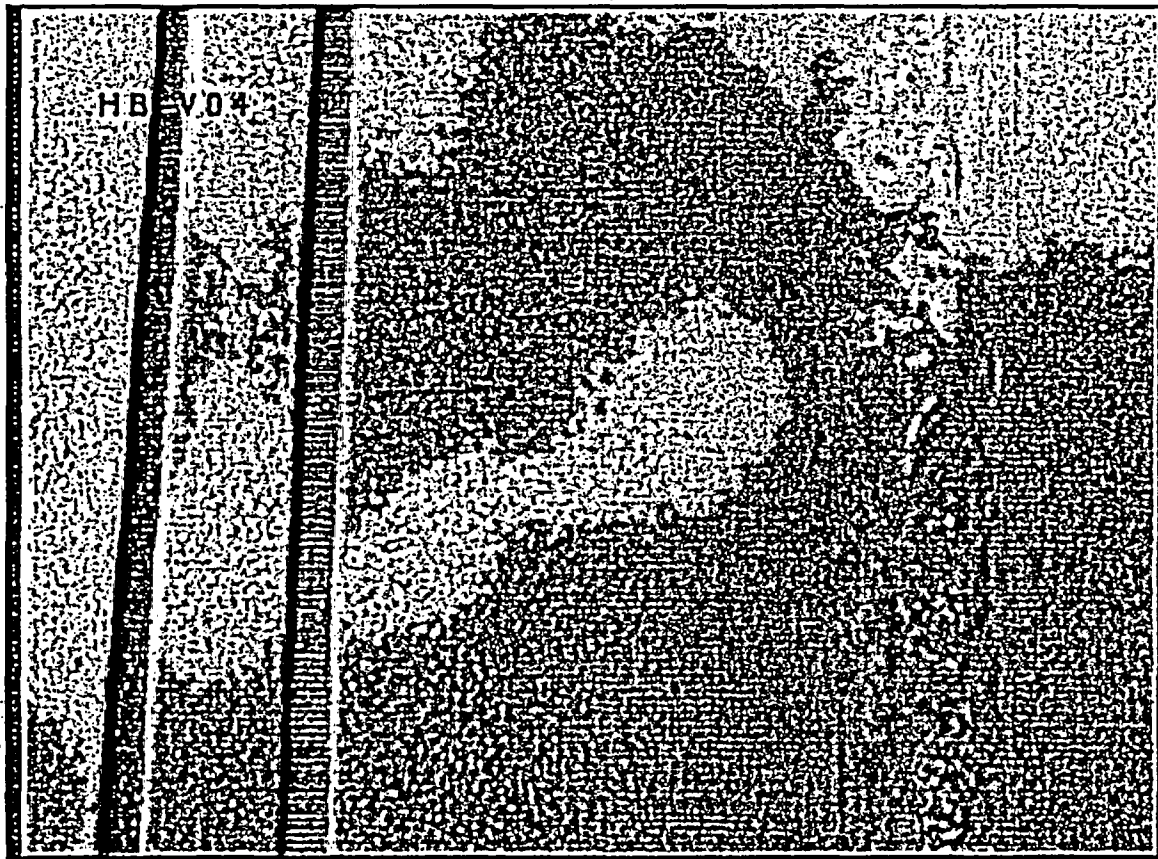
Customer Acknowledgement: _____ **Date:** _____

(Return Copy to FANP for Records)

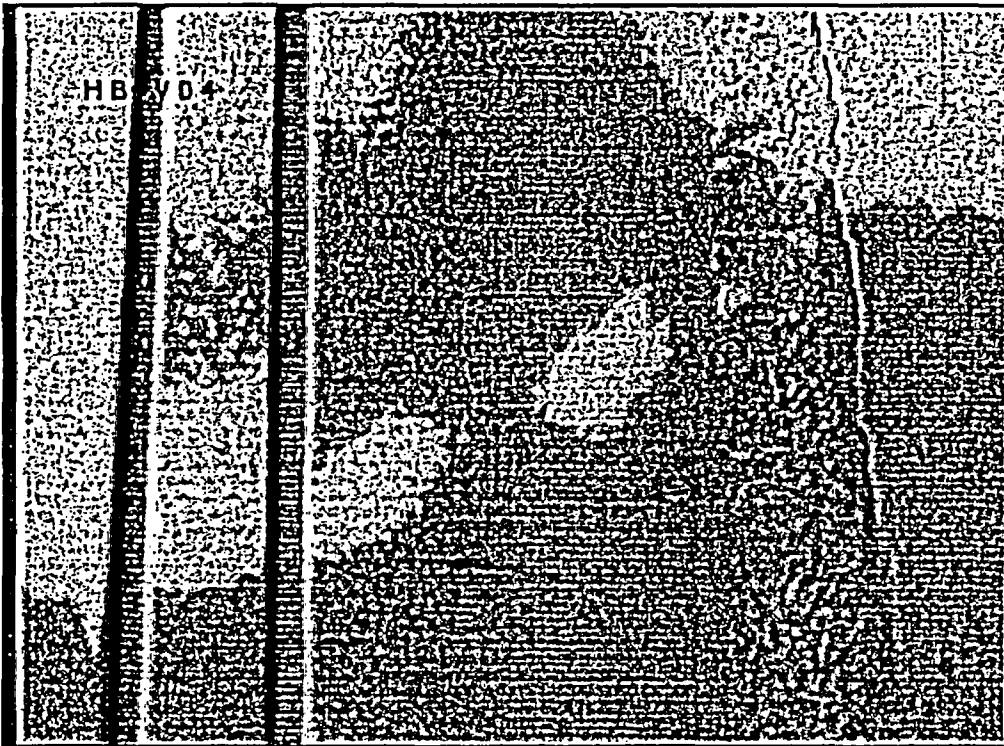
1st indication from the top



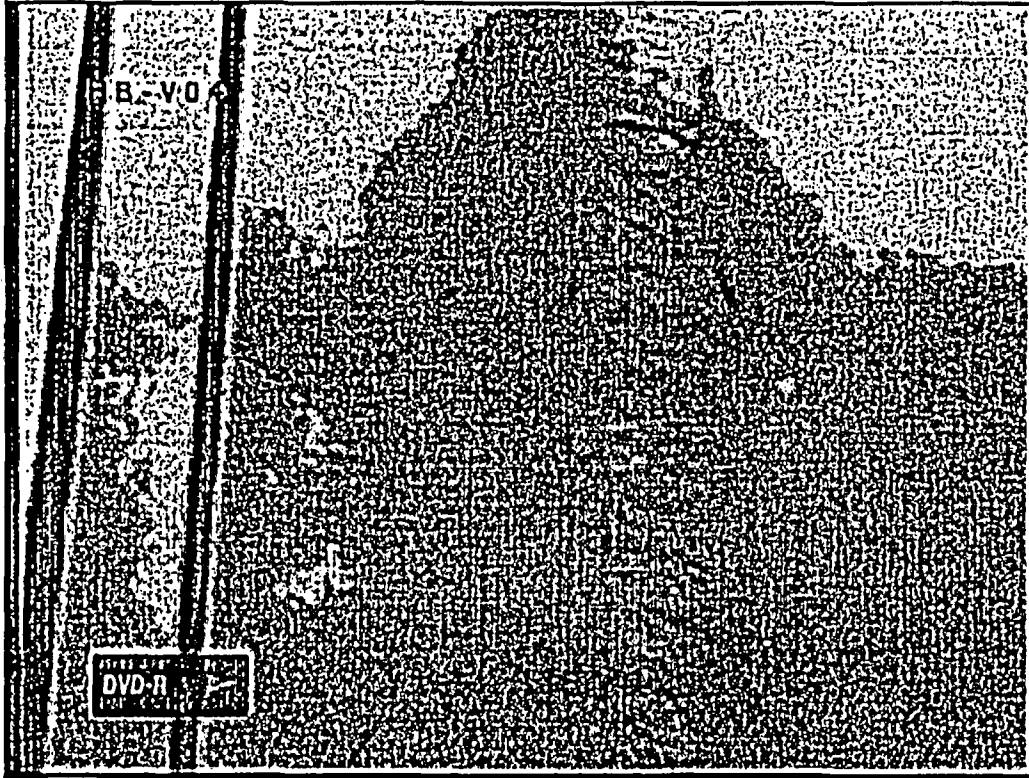
2nd Indication from the top



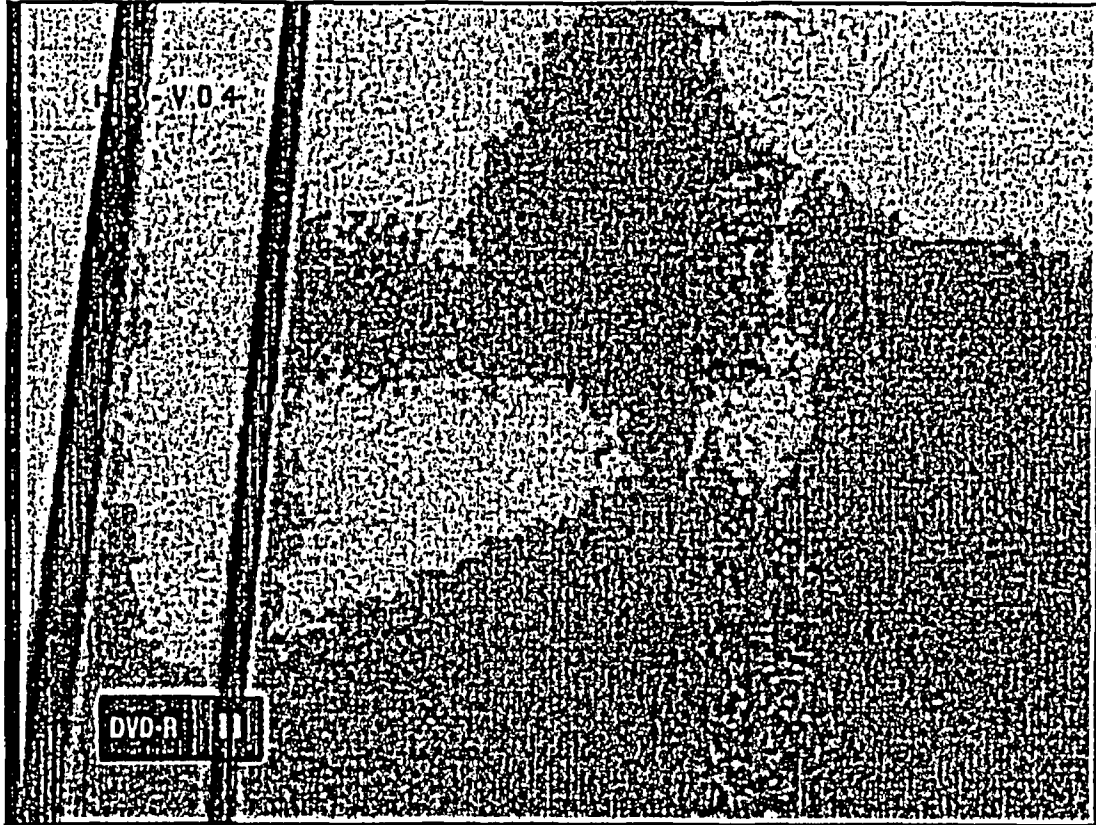
3rd Indication from the top



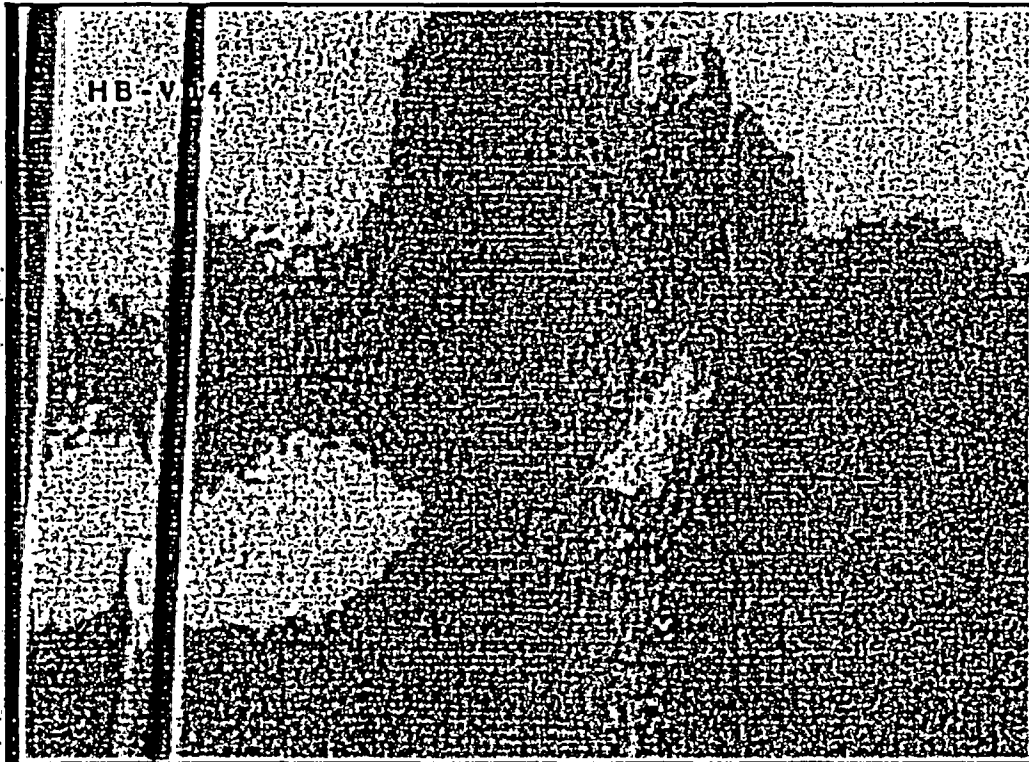
4th Indication from the top



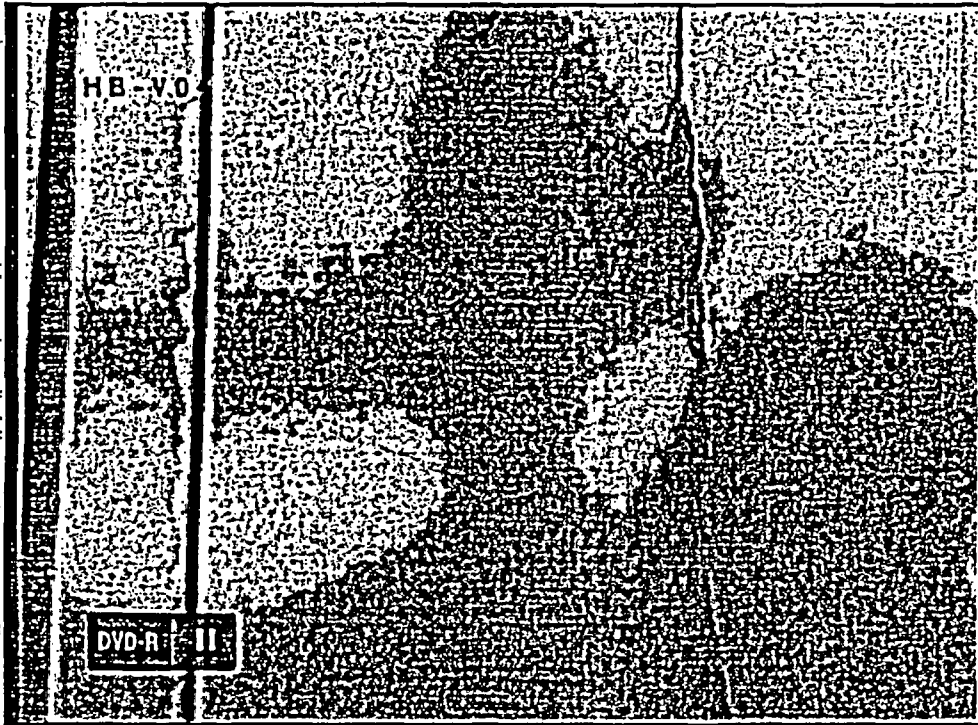
5th Indication from the top



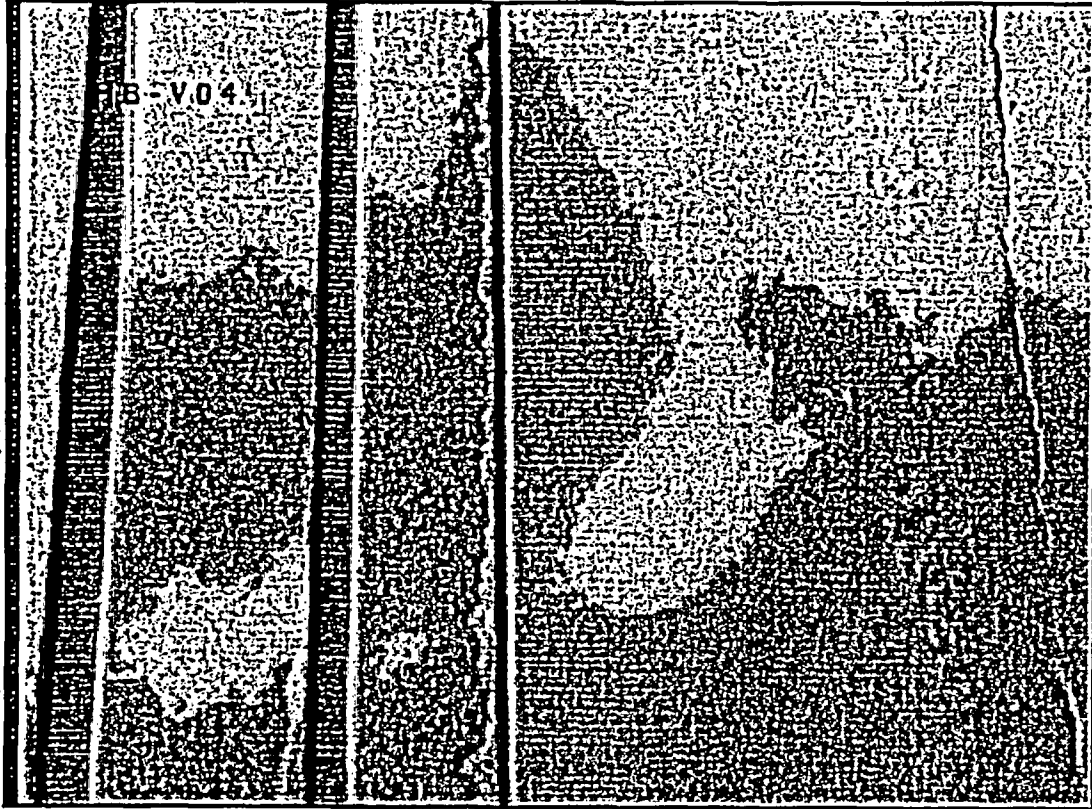
6th Indication from the top



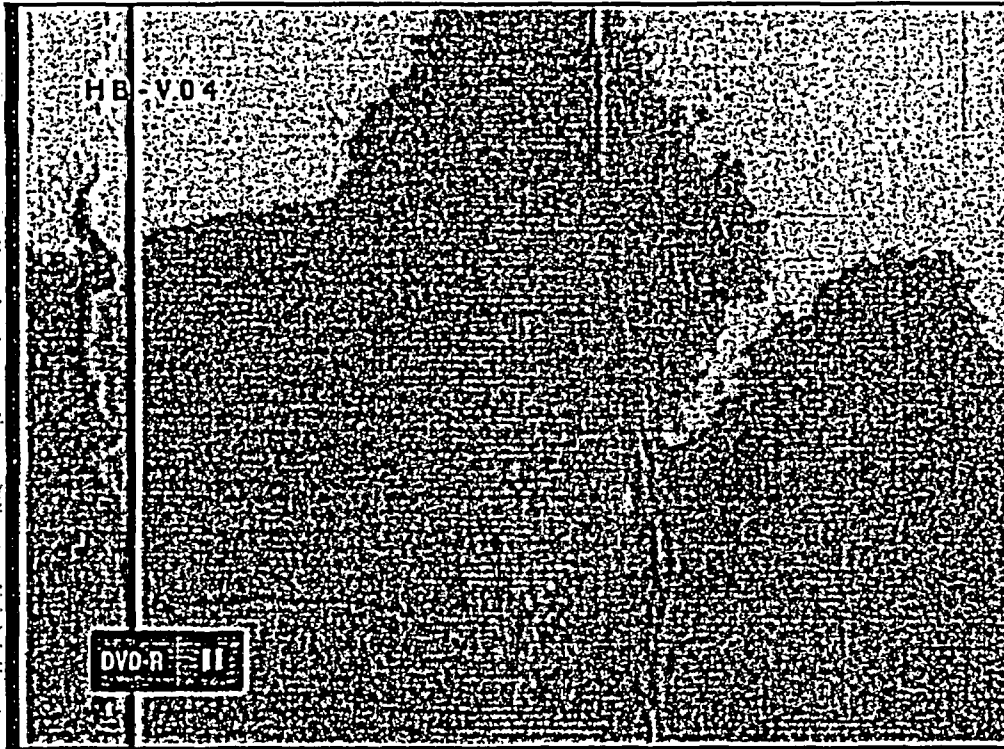
7th Indication from the top



8th and 9th Indication from the top



10th Indication from the top





**Vermont Yankee RFO-25
In-Vessel Visual Inspection
Indication Notification Form**

Date: 31 Oct 05

INF # 003

Time: 0530

Component:

DVD Number:

DVD Title:

HE-V4@270

Disk 18

2

Description of Condition:

During the VT-1 examination of HE-V4@270 one linear indication was observed in the base metal on the right side of the weld (see attached picture).

Framatome Level III: _____

Customer Acknowledgement: _____ Date: _____

(Return Copy to FANP for Records)

Indication on Weld HE-V4@270

