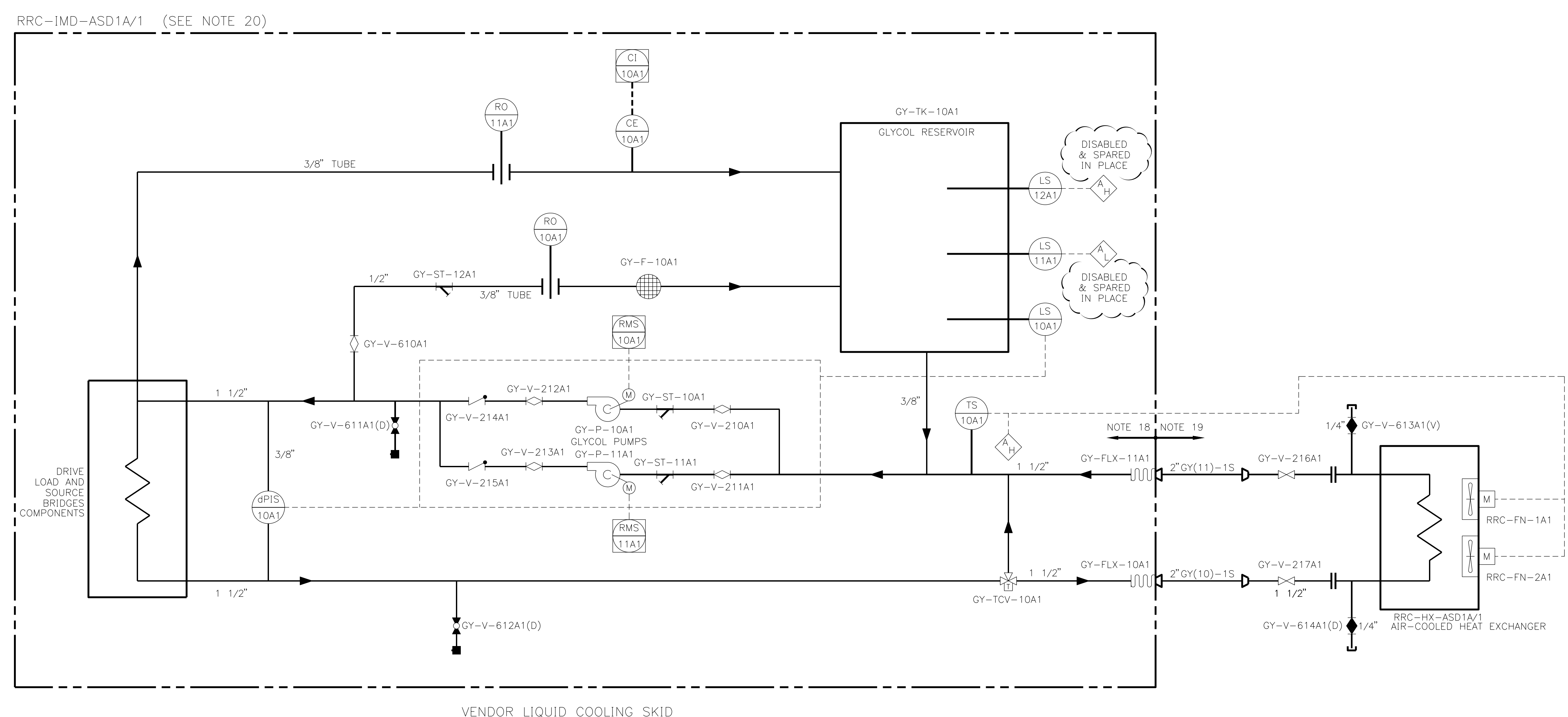
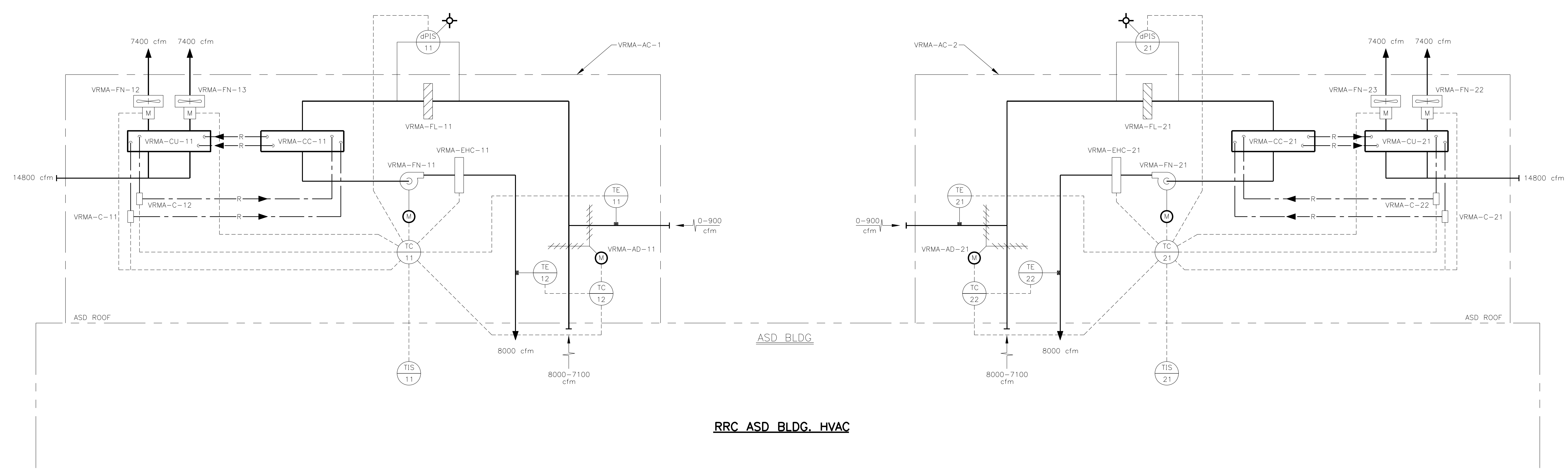


- NOTES: (CONT. FROM M530-1)
- ALL SYSTEM COMPONENTS, INCLUDING SUPPORTS, PIPING, AND EQUIPMENT REFERRING TO THIS NOTE SHALL BE CLASSIFIED AS FOLLOWS:
SEISMIC CATEGORY II
QUALITY CLASS 2
 - PIPING BETWEEN DRIVE COOLING SKID AND HEAT EXCHANGER IS:
SEISMIC CATEGORY II
QUALITY CLASS 2
CODE GROUP D
 - EPN'S SHOWN ARE FOR ONE OF FOUR DRIVE LINEUPS. THE APPLICABLE SUFFIX FOR ALL EPN'S IS AS FOLLOWS:
DRIVE COMPONENT EPN
SHOWN - RRC-IMD-ASD1A/1 GY-X-XXA1
 RRC-IMD-ASD1A/2 GY-X-XXA2
 RRC-IMD-ASD1B/1 GY-X-XXB1
 RRC-IMD-ASD1B/2 GY-X-XXB2
 - LIQUID COOLANT IS DISTILLED OR DE-IONIZED WATER AND PURE ETHYLENE GLYCOL. DO NOT USE RUST-INHIBITING GLYCOL SOLUTIONS.
 - PIPING IS BLANKED OFF DOWNSTREAM OF RRC-V-52B AND THAXTON EXPANDABLE PLUG IS INSTALLED BETWEEN VALVE AND PLATE.



VENDOR LIQUID COOLING SKID
INDUCTION MOTOR DRIVES LIQUID COOLING SYSTEM - RRC PUMP ADJUSTABLE SPEED DRIVES
(SEE NOTES 20 & 21)



RRC ASD BLDG. HVAC

FSAR FIG. NO. 3.2-3B

REV	DATE	DESCRIPTION	DWN	CHK	APVD	REV	DATE	DESCRIPTION	DWN	CHK	APVD	REV	DATE	DESCRIPTION	DWN	CHK	APVD	SIGNATURE	DATE	TITLE
0	12-3-93	NEW DWG PER 87-0244-OK-200																J.C. MOWERY	12-3-93	FLOW DIAGRAM RECIRCULATION SYSTEM MISCELLANEOUS SYSTEMS
1	8-5-94	REV PER 94-0175-0A-300 (J/1-2), 94-0175-0A-AD3 (J/1-2).															R.B. CLEAVINGER	12-3-93		
2	6-27-96	REV PER 87-0244-0G-1328 (B-E/2-10)															M.W. HOFFMAN	3-2-93		
3	7-1-98	REV PER 97-0149-0A-303 (H-J/4).															T. LOGAN	3-2-93		

WASHINGTON PUBLIC POWER
SUPPLY SYSTEM

WNP
2

SCALE: NTS
DWG NO: M530-2
REV: 3