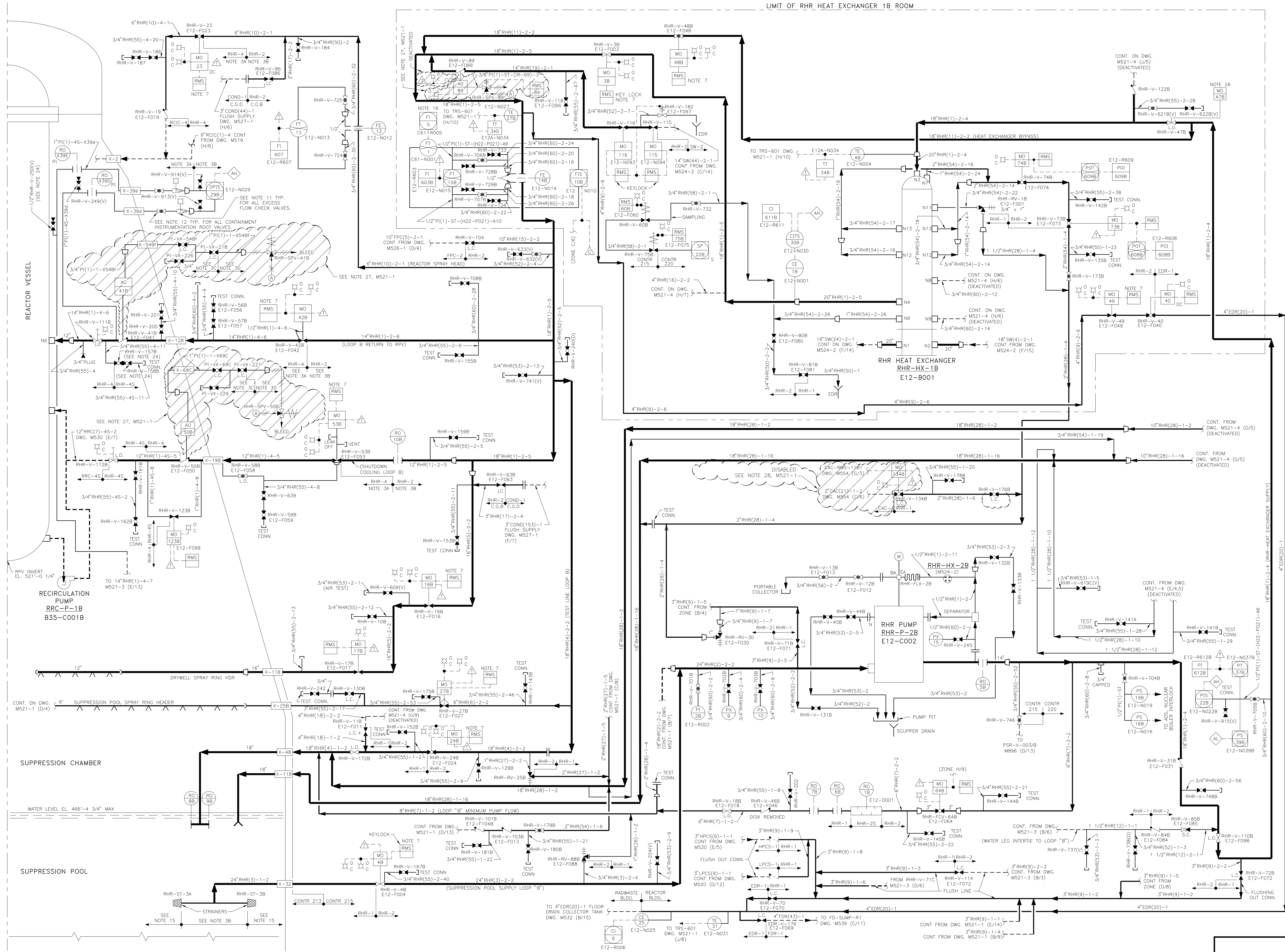


NOTES:
FOR NOTES SEE M521-1.

LEGEND:

1. ALL VALVES (EXCEPT THOSE ON INSTRUMENT LINES) SUFFIXED WITH A (V) DENOTE A 3/4" VENT VALVE EXCEPT AS NOTED.
2. ALL VALVES (EXCEPT THOSE ON INSTRUMENT LINES) SUFFIXED WITH A (D) DENOTE A 3/4" DRAIN VALVE.
3. ALL VALVES SUFFIXED WITH A (TH) DENOTE A THROTTLED VALVE.



REFERENCES TO CONTRACT NUMBERS, SUCH AS 215, 206, 220, FOUND IN THE NOTES ON THIS DRAWING REFER TO ORIGINAL CONSTRUCTION DESIGN REQUIREMENTS.

CURRENT DESIGN REQUIREMENTS ARE DOCUMENTED IN THE STATION DESIGN SPECIFICATIONS AND ACTIVE CONTRACT SPECIFICATIONS WHICH STILL APPLY.

FSAR FIG.

REV	DATE	DESCRIPTION	DNW	CHK	APVD	SIGNATURE	DATE	TITLE
97	4-29-02	REBRN AND REVISED PER 01422-015, 01476-009, 01485-010, 01488-011, ADDED SHEET 3.	LWC	BLS	DRJ	D. R. JACOBSEN	4-29-02	
98	10-24-02	REV PER 01978-010 (H9-10).	NT	HL	DRJ			
99	12-29-04	REV PER 02542-301 (D5-6, 7-8).	RAK	HL	SRP	B. L. STAFFORD	1-23-02	
100	08-4-05	REV PER 03539-284 (E-F7-6).	PL	HL	DRJ	L. W. CONLEY	08-31-00	

ENERGY NORTHWEST
People-Vision-Solutions

COLUMBIA GENERATING STATION

SCALE: NONE
DWG NO: M521-2
REV: 100