

PLATE 2  
**GEOLOGIC CROSS SECTION 9 H - H' FROM RESISTIVITY LOGS**

IRIGARAY MINE, BUFFALO, WYOMING

SEC. 9 T45N, R77W

WEST ← → EAST

H

H'

M-10

T-22

192

191

112

311

109

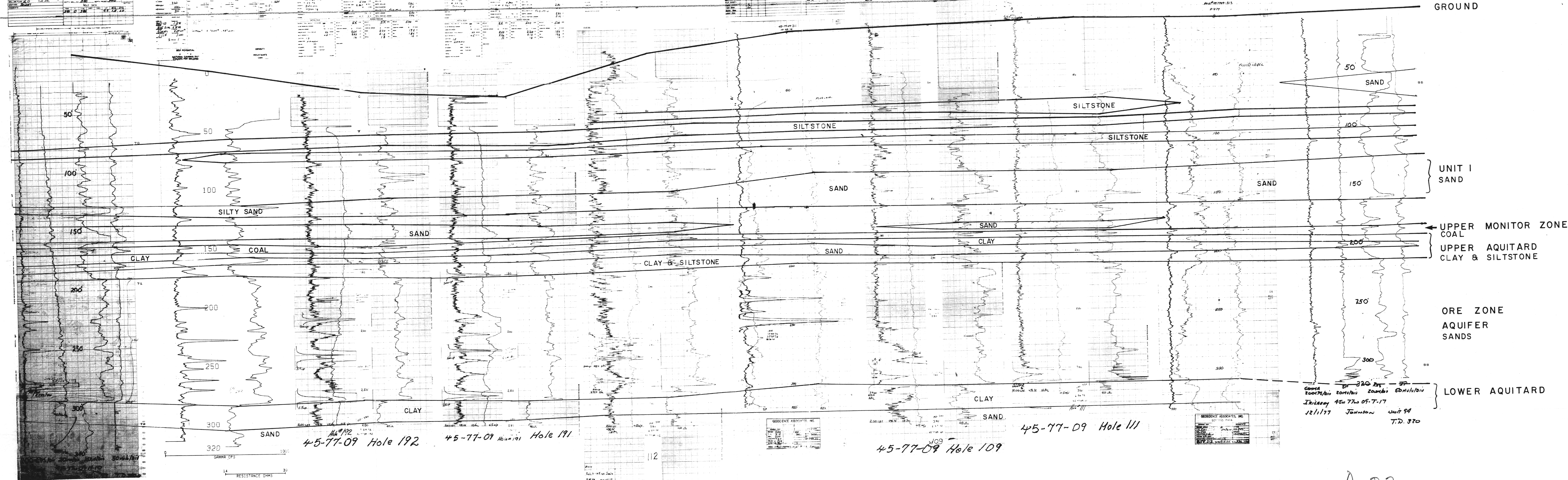
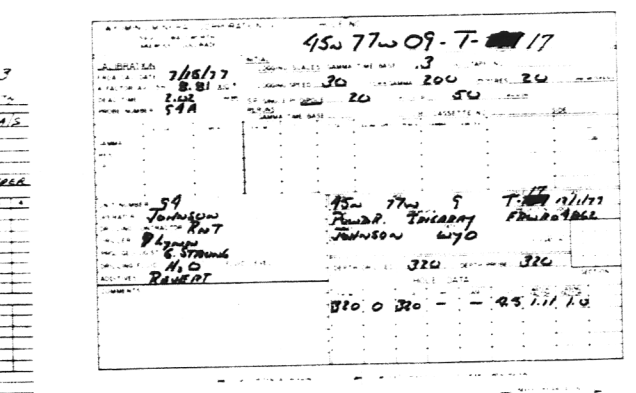
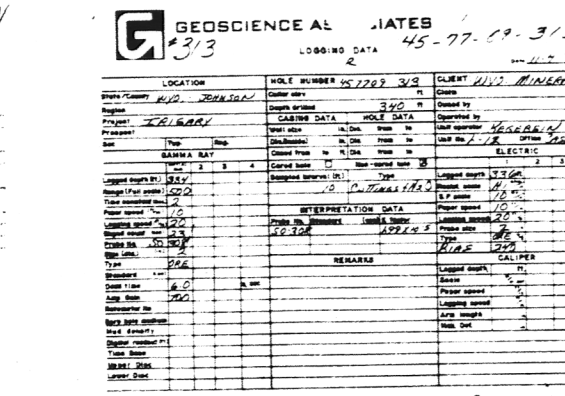
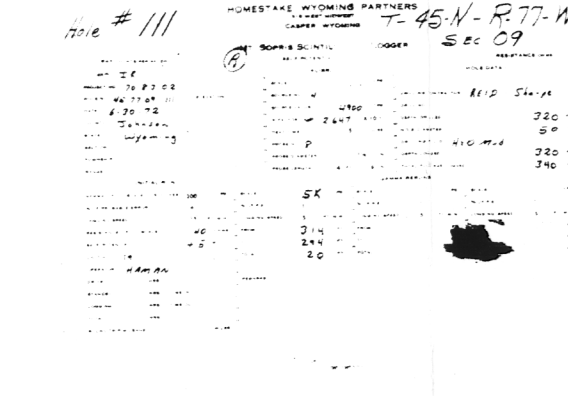
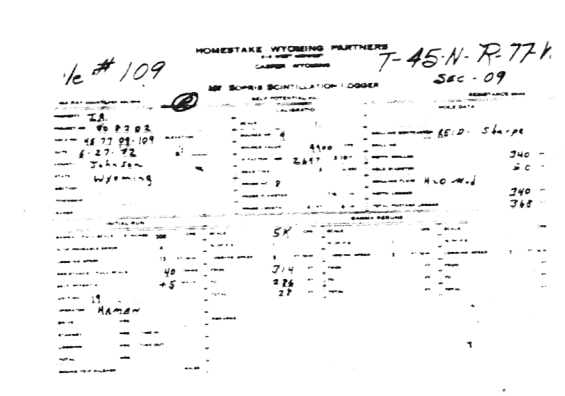
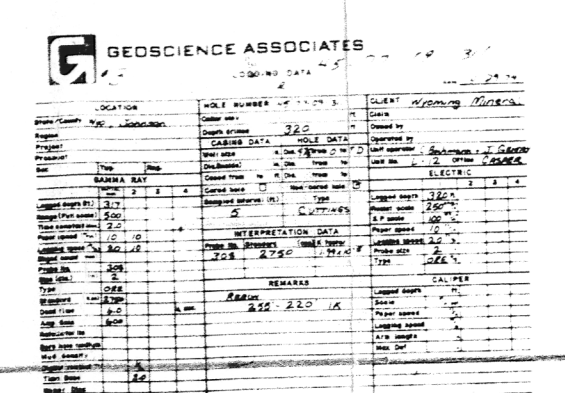
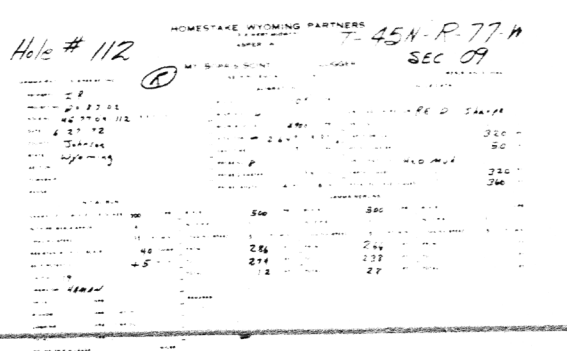
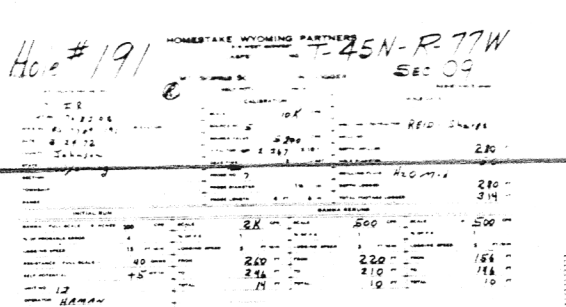
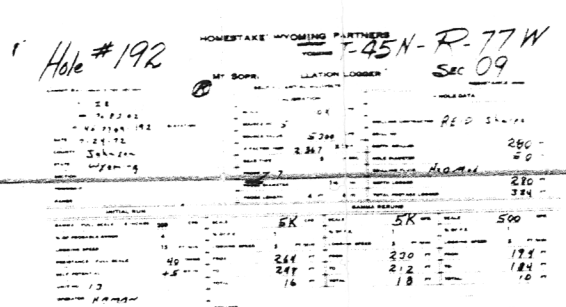
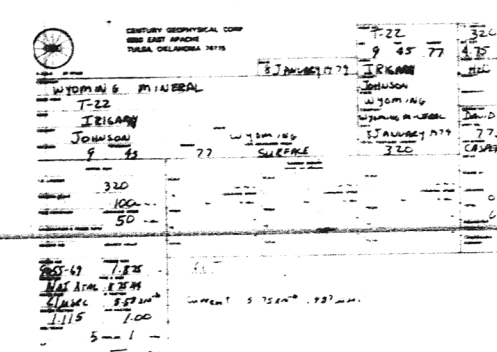
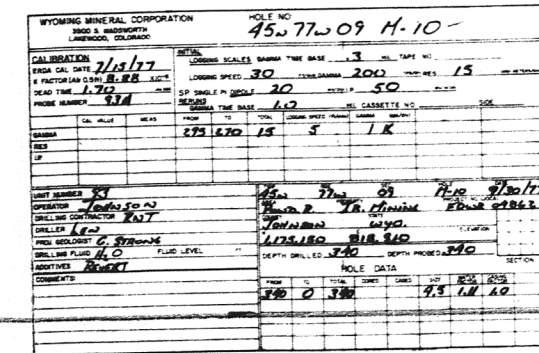
111

313

T-17

FEET ABOVE M.S.L.

4400  
4350  
4300  
4250  
4200  
4150  
4100  
4050  
4000



GROUND

UNIT I SAND

UPPER MONITOR ZONE COAL  
 UPPER AQUITARD CLAY & SILTSTONE

ORE ZONE AQUIFER SANDS

LOWER AQUITARD

COMPILED BY: T-22  
 WYOMING MINERAL IRIGARAY  
 HOLE DIAMETER: 04.8 CALIBRATE COUNTS: 0000  
 TRUCK # 7756 PROBE # 9055 -059  
 DATE: 01-08-78

45-77-09 Hole 192  
 45-77-09 Hole 191  
 Hole 191

45-77-09 Hole 109

45-77-09 Hole 111

45-77-09-7-17  
 12/1/77 Johnson Unit 94  
 T.D. 370

D-02