

PROPOSED REVISION 15
AP1000 DESIGN CONTROL DOCUMENT

Tier 1 Subsection 2.2.5, Table 2.2.5-5, and Figure 2.2.5-1

Main Control Room Emergency Habitability System

Description of Change

Correct certain tag numbers for equipment in the main control room emergency habitability system, and make a few additional editorial changes. Provide a precise reference for ITAAC item 6.b in Table 2.2.5-5.

Technical Justification

The change to ITAAC item 6.b in Table 2.2.5-5 provides a direct reference to the relevant material. The balance of the changes are editorial and require no technical justification.

Regulatory Consequence

There is no change to design function. There is no change to analysis or analysis methodology. There is no effect on the FSER. However, these corrections do represent changes in Tier 1 material.

Change Markup

Revise the first paragraph of Tier 1 subsection 2.2.5 as follows:

2.2.5 Main Control Room Emergency Habitability System

Design Description

The main control room emergency habitability system (VES) provides a supply of breathable air for the main control room (MCR) occupants and maintains the MCR at a positive pressure with respect to the surrounding areas whenever ac power is not available to operate the nuclear island nonradioactive ventilation system (VBS) or high radioactivity is detected in the MCR air supply. (See [Tier 1 material, CDM Section 3.5 for Radiation Monitoring](#)). The VES also limits the heatup of the MCR, the [1E instrumentation and control \(I&C\) equipment rooms](#), and the Class 1E dc equipment rooms by using the heat capacity of surrounding structures.

Tier 1 Table 2.2.5-5 Revise item 6.b) in Tier 1 Table 2.2.5-5 as follows:

Table 2.2.5-5 (cont.) Inspections, Tests, Analyses, and Acceptance Criteria		
Design Commitment	Inspections, Tests, Analyses	Acceptance Criteria
6.b) Separation is provided between VES Class 1E divisions, and between Class 1E divisions and non-Class 1E cable.	See Tier 1 Material, Table 3.3-6, item 7.d, Section 3.3, Nuclear Island Buildings .	See Tier 1 Material, Table 3.3-6, item 7.d, Section 3.3, Nuclear Island Buildings .

Tier 1 Figure 2.2.5-1 Revise Tier 1 Figure 2.2.5-1 as shown on the next page.

PROPOSED REVISION 15
AP1000 DESIGN CONTROL DOCUMENT

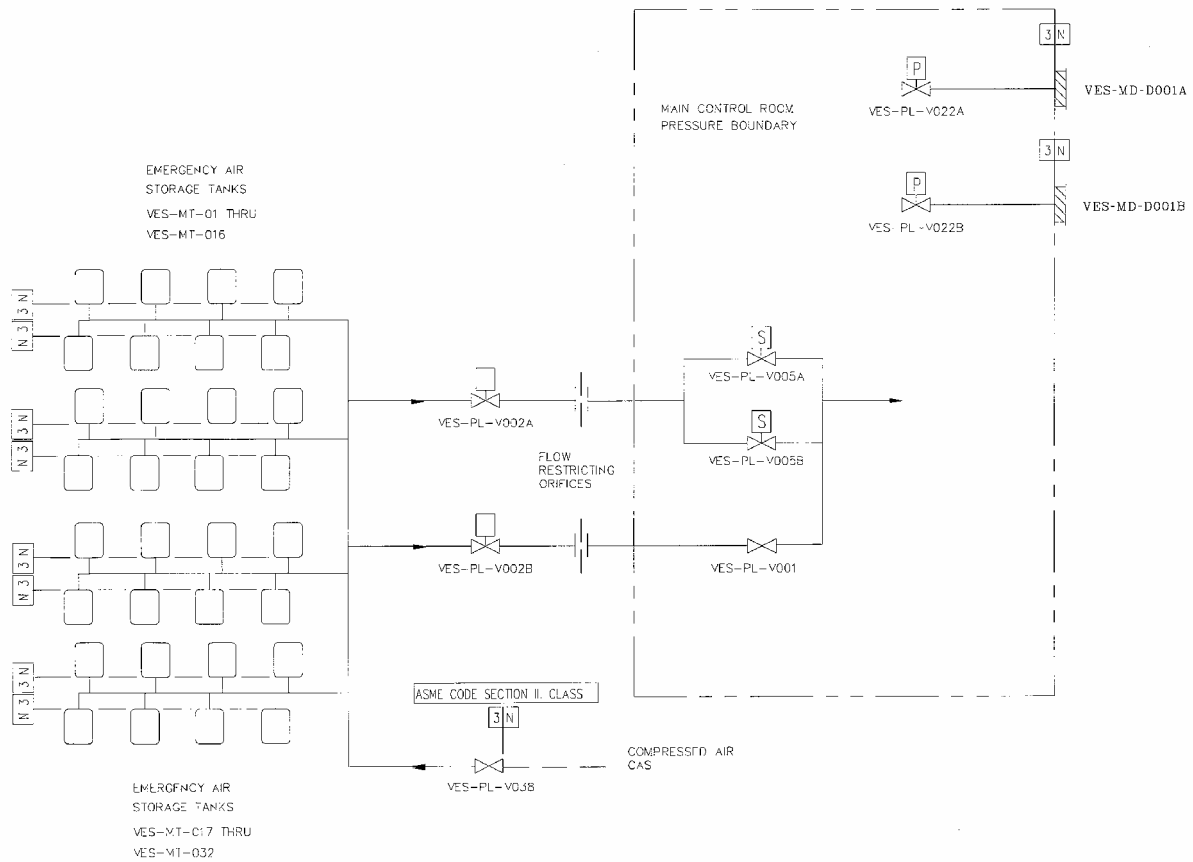


Figure 2.2.5-1
Main Control Room Emergency Habitability System