

# Limbo Lands Status & Next Steps

Doug Dahle

Liz Brady

Laura Vimmerstedt

National Renewable Energy Lab

# Overview

- Approach
- Status
- Geographic Information System (GIS) Analysis
- Pilot Projects
- Outreach & Stakeholders

# Approach

- GIS Analysis to show overall national opportunity and preliminary ranking
- Pilot Project approach
  - develop stakeholder relations and understanding of practical and site specific issues for renewable project development

# Status

- GIS Analysis

- Drafted report (includes major questions)
- Identified agency & consultant resources to answer questions
- Obtained access to CERCLIS data

- Pilot Projects

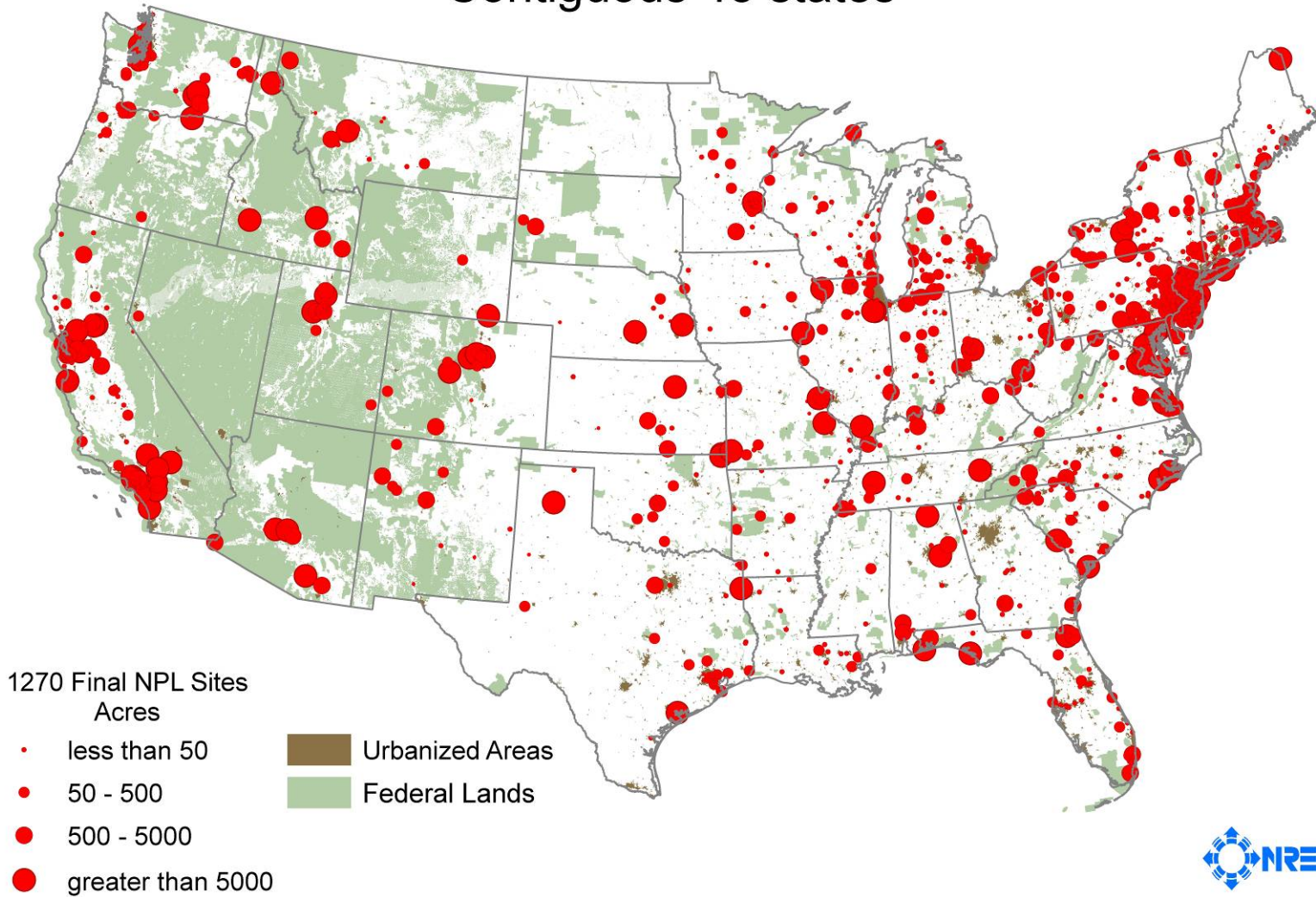
- Initial ideas on Federal Facility opportunities
- Connections to EPA Programs
  - Abandoned Mine Land
  - Brownfields

# GIS Analysis

- Identify the high potential sites for different renewable resource types
  - Apply NREL screening criteria
- Categorize sites by potential clients & stakeholders to facilitate pilot project / program (e.g. federal lands, tribal lands, mine lands, brownfields)
- Limbo Lands data and database interpretation remains a challenge

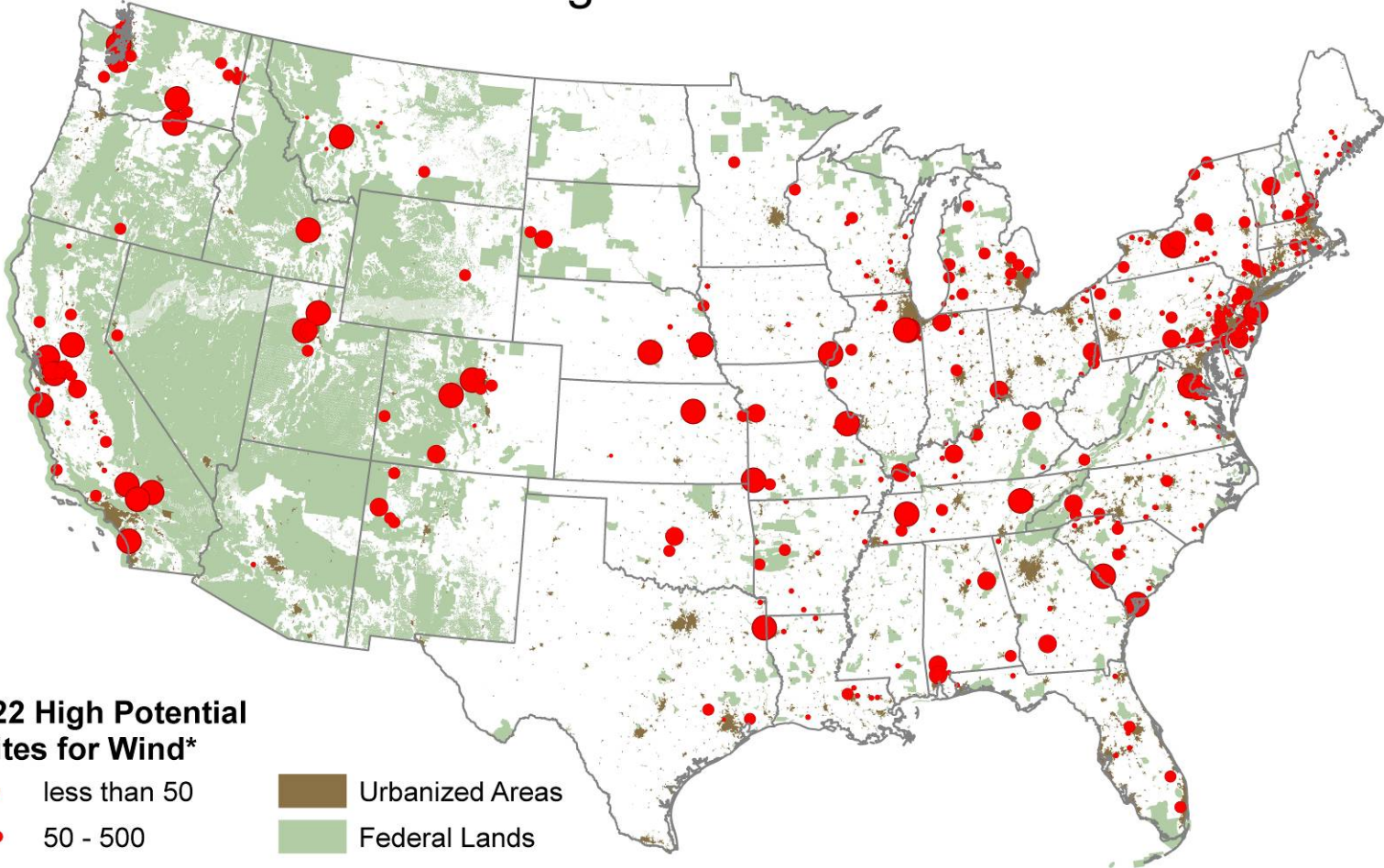
# SUPERFUND SITES ON NATIONAL PRIORITY LIST

Contiguous 48 states



# SUPERFUND SITES ON NATIONAL PRIORITY LIST

Contiguous 48 states



## 422 High Potential Sites for Wind\*

- less than 50
- 50 - 500
- 500 - 5000
- greater than 5000

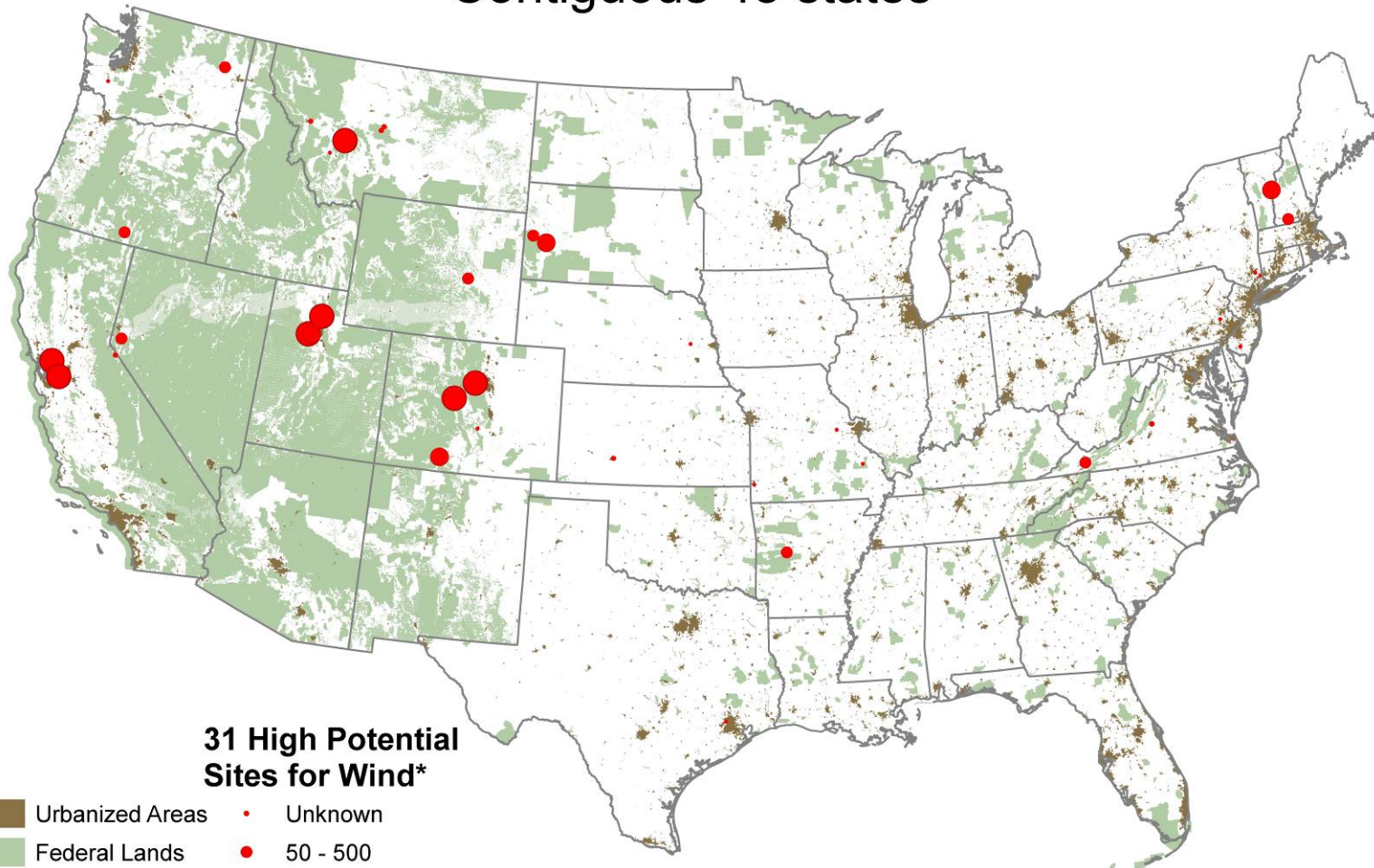
- Urbanized Areas
- Federal Lands

\* 2004 standard exclusions, contact Donna\_Heimiller@nrel.gov





# SUPERFUND SITES ON NATIONAL PRIORITY LIST

Contiguous 48 states



## 31 High Potential Sites for Wind\*

- |   |   |
|---|---|
|  Urbanized Areas |  Unknown           |
|  Federal Lands   |  50 - 500          |
|   |  500 - 5000        |
|   |  greater than 5000 |

All identified wind sites meet:  
standard exclusion, are  $\geq 50$  acre  
and have wind power class  $\geq 4$

\* 2004 standard exclusions, contact Donna\_Heimiller@nrel.gov





# SUPERFUND SITES ON NATIONAL PRIORITY LIST

California

## High Potential Sites for Wind\*

- Unknown
  - 50 - 500
  - 500 - 5000
  - greater than 5000
- Urbanized Areas
- Federal Lands

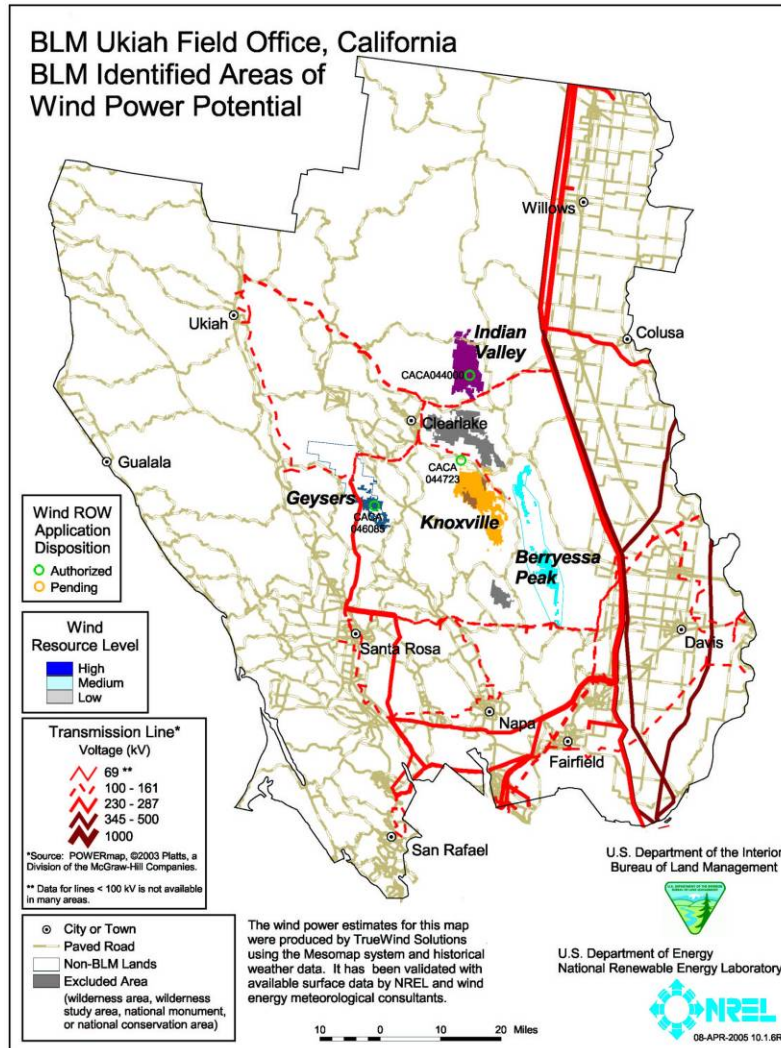
\*2004 standard exclusions, contact Donna\_Heimiller@nrel.gov



# Pilot Projects

- FEMP federal lands analyses
  - BLM Assessment of Renewable Power Potential
  - >100 Wind project applications on BLM land
  - BLM Wind PEIS to streamline NEPA process
  - Analysis for wind use in BLM Land Use Plans
- Hot Leads for Pilot Projects
  - Nearby Wind projects on BLM lands
  - DOD Renewable Study – priority sites

# BLM Wind Land Use Plan Pilot



# Pilot Projects (cont'd)

- FEMP - Renewable project facilitation
  - Assessment of economic potential
    - Attractive to private developers/financiers
  - Identify contract requirements for effective public/private partnerships
  - NEPA compliance issues if Fed land
  - Advice on issue/barrier resolution
  - Strategies to address stakeholder needs

# Outreach and Stakeholders

- Federal Agencies
  - DOD
  - DOE
  - EPA Federal Facilities program
  - DOC Economic Development Administration
- EPA Programs
  - Brownfields
    - Potential Presentation at National Conference – Nov 05
  - Superfund
  - RCRA Brownfields
  - OSWER (overall)

# Outcomes for EPA Success

- Let's Discuss